



**SENDYS Explorer – Software Suite**

# Set your business free with powerful all-in-one software

SENDYS Explorer is a multifleet software platform, exclusive to OKI, that digitises, shares and organises documents, creates efficient workflows tailored to the way you work, increases document security, reduces waste and more.

SENDYS Explorer has a proven track record, with over 6,000 installations on up to 30,000 devices, helping customers from various industries to become more productive, efficient and profitable.



**SENDYS Explorer** – The core software allows you to scan and distribute documents on your MFP or mobile device and can be downloaded from [www.sendysexplorer.com](http://www.sendysexplorer.com) at no cost.

**SENDYS Explorer Fleet Manager** – Remotely view the real-time status of all your printers and MFPs. A hardware fleet management tool that allows you to manage devices, and also offers usage statistics and device alerts on a personalised dashboard for easier maintenance and increased cost-effectiveness.

**SENDYS Explorer Connectors** – Upload scanned documents from your MFP or smartphone/tablet directly to Dropbox, OneDrive, OneDrive for Business

Google Drive, Microsoft SharePoint & Yandex. Scan directly to a document management solution using SENDYS Flex Connector or Flex Connector plus.

**SENDYS Explorer Premium OCR** – Higher productivity with digitised documents. State of the art OCR technology powered by ABBYY®.

**SENDYS Explorer Output Manager** – Keep private documents safe with user authentication. SENDYS assists your company to be GDPR compliant by using pull-printing, secure logins and PIN codes to ensure every document is stored, transferred and printed securely. Clamp down on wasteful and unnecessary printing.

REMOTELY VIEW THE REAL-TIME STATUS OF ALL YOUR PRINTERS AND MFPS

# SENDYS Explorer Fleet Manager

SENDYS Explorer's Fleet Manager allows you to remotely view the real-time status of all your printers and MFPS. This hardware fleet management tool allows you to manage devices, offers usage statistics and device alerts on a personalised dashboard for easier maintenance and increased cost-effectiveness.



**Device accounting** - Reporting tool that quickly displays print volumes for one or several devices at a time. Create graphs and print results right from the application, or export data in a variety of formats.

**Job accounting** - Provides management information detailing printer use on a departmental or individual basis, so you can enjoy the time and money saved by automating and streamlining business processes.

**Device Management** - Offers an overview of your hardware fleet which includes a real time alert dashboard (paper alert, power-off etc). Automatic email notifications, remote device configuration and supplies dashboard allows you to quickly see what your print fleet is doing.

**Device discovery** - Scan your network so you can quickly install and configure your recently added devices.

**Firmware updates** - Manage the firmware on your devices remotely, allowing you to upgrade at a time that suits you e.g. overnight or at the weekend.

**Alerts & Consumables management** - Receive alerts, and proactively manage your consumables to minimise downtime and improve productivity.





# SENDYS Explorer Connectors

Accuracy, consistency and security with every scan. With SENDYS Explorer you can scan and print documents directly to/from cloud applications, such as Dropbox, OneDrive, OneDrive for Business, Google Drive and Microsoft SharePoint.



Additionally SENDYS Explorer offers Flex Connector which allows you to create automated document scanning workflows and upload fully-formatted, digitised files to your document management system, giving you total control of the way you work.



## Flex Connector

- Customised workflow shortcuts, easily accessible from the SENDYS front panel (MFP, smart phone)
- Configure document input fields, create folders and generate file names automatically, convert images and specify any additional metadata
- Send the output to a range of destination types, including: File System, Samba/Network shared folder and FTP, allowing you integrate with 3rd party document management solutions (locally or cloud hosted)
- Fast batch scanning and automated document workflows using the barcode functionality



## Flex Connector Plus

- Includes all the features of Flex Connector
- Zonal OCR, allows you to extract data fields from your document to be used as metadata which can be automatically imported to any 3rd party application (for example extracting a customer name from an invoice for automatic processing)
- Simplify scanning by removing black pages and auto-rotation of pages
- Validate your extracted data on your OKI MFP





DIGITISE DOCUMENTS WITH STATE-OF-THE-ART OCR TECHNOLOGY

# SENDYS Explorer Premium OCR

SENDYS Explorer offers the very latest in Optical Character Recognition (OCR) technology powered by ABBYY®.

OCR technology enables your computer to identify letters and words in a scanned document, so you can search, edit, analyse, copy and extract content as you would in a text document.

**Digitise documents with state of the art OCR technology.**

Previously a scanned document was essentially an image. With OCR technology your computer can identify letters and words in a scanned document, so you can search, edit, analyse, copy and extract content.



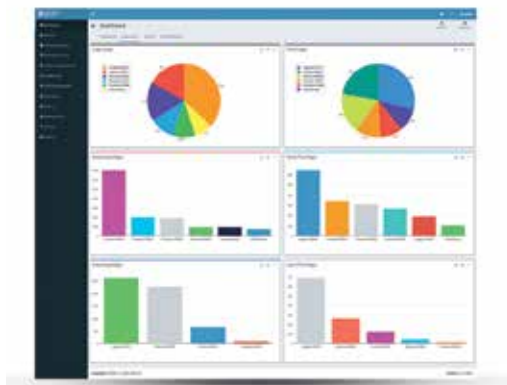
SENDYS Explorer comes with OCR as standard, so you can create searchable PDF and PDF/A files. With SENDYS Explorer Premium OCR, you have additional output formats such as Microsoft Word and Excel. It also allows you to digitise documents in over 190 languages quickly and accurately, while MRC-compression reduces the scanned file size, allowing you to reduce storage and distribute your files faster and more easily.

COMPLETE VISIBILITY AND CONTROL OF PRINTING

# SENDYS Explorer Output Manager

With SENDYS Explorer Output Manager you can securely manage your print output. The administrator is able to control users' print, copy and scan while users can protect their print jobs through user authentication on the OKI device by using their network credentials, PIN numbers or proximity cards.

Output management reporting gives you total visibility of printing costs across your business, allowing you to prevent wasteful behaviour and enforce print policies such as restricted colour printing.



Detailed reports compiled by Output Manager provide in-depth analysis of printer use on a departmental or individual basis, giving you greater control over office costs and streamlining many day-to-day business processes.



# SENDYS Explorer improves team productivity in any industry



## Healthcare

### Key Challenges

- Lack of confidentiality and information security
- Delays and misinformation
- Slow and outdated systems

With SENDYS Explorer, advanced security features guarantee patient safety and security. Hospitals and clinics can scan, file and share documents in real time, making them accessible anywhere, at any time for those with the right authorisation.

## Retail

### Key Challenges

- Converting browsing customers to sales using relevant information
- Guiding them through a store and providing added value
- Offering personalised services to sell and increase customer loyalty
- Relying on third-party printers to provide graphics

SENDYS Explorer offers retailers the ability to print high-quality signage, banners and visual aids in-house, instead of waiting for an external print company to design, print and send graphics.

## Office

### Key Challenges

- Typical front and back-office problems impacting office productivity
- Manually archiving, storing and handling paper documents
- Silos of unshared data resulting in poor communication
- Wasteful use of consumables, confidential documents left at the printer

With SENDYS Explorer, document-scanning workflows save time by connecting directly to third-party applications, for example a Document Management System, via an XML interface. With one click, you can securely transform any paper document into a range of digital formats.



## Business Printing Specialists

OKI is a global business-to-business brand dedicated to creating cost effective, professional in-house printing solutions which are designed to increase the efficiency of today's and tomorrow's businesses and their workflows. As pioneers in innovative print technologies from digital LED to High Definition Colour, we have a portfolio of award winning A3 and A4 colour and mono printers and MFPs, for workgroups and businesses of all sizes. This combined with our solutions enables businesses to achieve both image focused, vibrant, professional quality print communications and budget flexibility. OKI's portfolio also includes precision-engineered large format printing systems specifically designed for the sign, graphics, CAD and GIS markets that provide industry-leading productivity and image quality. In addition, our POS and Dot Matrix printers complete our range of printing solution.



### Considering the Environment

OKI is committed to its role as a responsible partner for all its stakeholders:

Shareholders, business partners, end-users, local communities and employees.

As part of the OKI Group's Charter of Corporate Conduct, OKI continually reviews its efforts to provide environmentally sound solutions to its customers:

- OKI products are designed and manufactured with reducing the impact on the environment in mind.
- Increasing the amount of our hardware products and consumables that are recycled is one of our strategic objectives.
- We feel responsible for conducting our business in an environmentally sound manner, contributing to conservation and activities within our local communities.

OKI's Green Leaf symbol, found on all products and packaging, represents our total commitment to collection, recycling and environmental processes.



### High Definition Colour

High Definition Colour is OKI's own unique collection of market-defining hardware and software technologies. Together, these components deliver unsurpassed colour printing – simply, intelligently, perfectly.

We pioneered Single-pass Flat Paper Path technology to bring you fast affordable colour printing. In consumables, we created a special Microfine High Definition Toner to ensure your documents are printed in superior quality.

We championed digital LED printing technology: our High Definition LED printheads have no moving parts and deliver pin sharp images.

The combination of the range of media and software solutions we offer means you have much more control of what you want to print, when you want to print – without leaving the office.

#### OKI EUROPE (UK & Ireland)

Blays House, Wick Road,  
Egham, Surrey.  
UK

T +44 (0) 1784 274 300

[WWW.OKI.COM/IE](http://WWW.OKI.COM/IE)