

Template Manager



Expand creative thinking and extend in-house printing

Enjoy the creative freedom which Template Manager offers. Discover document templates and new ways to create more materials in-house – giving greater control over time and costs. Template Manager is a free software that has been designed to help you create and print a large range of business stationery and promotional materials such as brochures, address labels, business cards, CD/DVD labels, large banners (up to 1320mm in length) and documents requiring variable data or barcodes. It also assists in the creation of complex or bespoke items, offering templates for specific media.

Template Manager delivers the freedom, knowledge and tools to create and print professional-looking documents in-house.

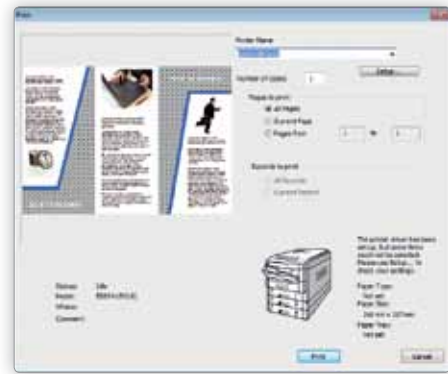
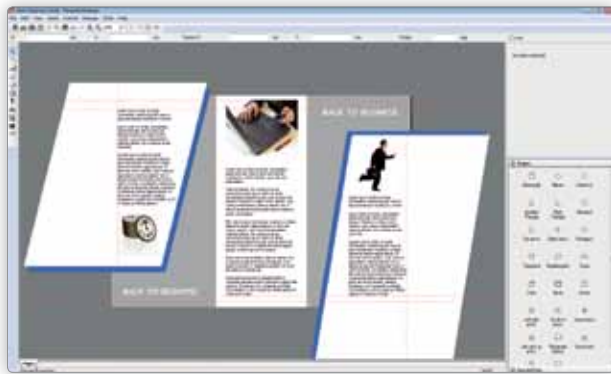
Key Features

- Import and merge variable data and logos into a pre-defined or customised template
- Duplex and multi-page document capabilities
- Adjustable rulers with live updating of X Y co-ordinates
- Image manipulation, shape drawing and editing
- Auto match of document to correct media and alignment
- Save template designs as PDF and JPEG format
- Document security with password protection to prevent unauthorised access
- Scan images or documents directly from a connected MFP or Scanner using TWAIN

Template Manager

Creative Documents, simple printing

Template Manager handles the needs of every user, whether new or experienced document designers. Template Manager works well with all Microsoft applications allowing the user to import files and graphs for use on the page and allows Wordart to be embedded. Image Masking (Clip Images) gives the user the ability to trim images to shape which is useful when printing on media of varying sizes and shapes such as a CD label. Additionally, Basic Data Import allows tabular data to be imported from spreadsheet applications, print merged and then printed as address labels, name badges and other personalised items.



Make a creative impact

Flexibility – Unlimited designs



- Unique software package
- No limit to the designs that can be created
- Produce more in-house for greater control over finished document
- Share template designs across networks, for economy and brand consistency
- Password protect template designs
- Lock areas of templates to protect brand integrity
- Save template designs as PDF or JPEG formats that can be used across other applications

User-friendly and feature rich



- Simple to use, bringing extra productivity and professionalism to the office
- Software matches the document to the media
- Printer is automatically set to the correct media size, weight and paper tray for hassle-free printing
- Minimise wasted time and paper with guaranteed alignment and sizing to match
- Familiar Microsoft Windows standard application look and feel
- Scan images or documents directly from a connected MFP or Scanner using TWAIN

Cost-effective



- Cuts the cost of outsourcing by producing documents in-house
- Avoids the need to purchase additional specialist design software
- Double-sided and media-specific designs can save on paper costs
- Documents can be printed when needed, in exact quantities required, saving money and reducing wastage



For further information on Template Manager visit www.oki.co.uk/smartsolutions

OKI EUROPE (UK & IRELAND)
Blays House, Wick Road,
Egham, Surrey,
UK
Tel: +44 (0) 1784 274 300
WWW.OKI.COM/UK

OKI

Open up your dreams