



**Smart colour printers and MFPs that raise the bar for small businesses and workgroups**

PRINT COPY<sup>1</sup> SCAN<sup>1</sup> FAX<sup>1</sup> NETWORK



A4	✓
Colour/Mono	✓
Duplex print, copy, scan, fax	✓
Prints A6 to 210 x 1321mm, up to 220gsm	✓
1 – 25 users	✓



# Powerful printers to help you compete at a new level

Putting exceptional print quality, smart connectivity and solid levels of security within reach of small businesses and workgroups, the ES5400/ES5400 MFP Series open up exciting opportunities.

With a 7” colour LCD touch screen and OKI’s open architecture smart extendable platform (sXP) which can be used with third party software solutions, as well as bespoke document solutions. As a result, businesses can join the digital transformation, streamline their workflow, better manage overheads and prepare for growth.

This range also offers high level security measures like Private Print and optional Card Release to ensure only those authorised can view and print confidential company information. Wireless Direct gives further protection enabling safe concurrent connection of wired and wireless networking.

All the range is built on a powerful new engine which ensures impressive speeds and remarkable 1200 x 1200dpi print quality. A large memory makes it easy to handle graphics-intensive work and Gigabit Ethernet allows the fast transfer of large colour files across the network. This means more colour work can be printed when needed in the office – from business cards to brochures and banners, helping businesses build their brand in an affordable and time-efficient way.

Trouble-shooting on device screen and through the OKI mobile print app ensure that these devices are easy to operate and maintain. Once new features are available the user can easily update their device through the OKI website portal.



Print effortlessly from your smartphone or tablet. These printers are Google Cloud Print Ready and compatible with AirPrint by Apple Inc, enabling you to print wherever you are, without having to connect directly to a printing device.

## ES5432dn

With its 30ppm print speed and 1,410 paper capacity (with two optional paper trays) makes this a reliable choice for small workgroups printing high volumes.

## ES5442dn

With the same features as the ES5432dn, this smart printer is designed with big business functionality. A 7” colour LCD touch screen and OKI’s open architecture sXP brings document management to a new market. sXP allows for connectivity to pull printing fleet and other devices, plus the potential to run third-party applications.

## ES5463 MFP

This MFP offers everything provided by the ES5432dn together with multifunction capability. It adds fast colour scanning (to 30ipm) to its copying, faxing and high quality print functions enabling efficient conversion to digital.

## ES5473 MFP

With the same features as the ES5463 MFP, this smart printer is designed with big business functionality. A 7” colour LCD touch screen and OKI’s open architecture sXP brings document management to a new market. sXP allows for connectivity to pull printing fleet and other devices, plus the potential to run third-party applications.

### Features at a glance

	ES5432dn	ES5442dn	ES5463 MFP	ES5473 MFP
Functionality	Print	Print	Print, Copy, Scan, Fax	Print, Copy, Scan, Fax
Display Panel	2.4” Graphical LCD	7” colour LCD touch screen	3.3” Graphical LCD	7” colour LCD touch screen
Wireless	Optional	Optional	Optional	Optional
Colour print/copy <sup>1</sup> speed	30ppm	30ppm	30ppm	30ppm
Paper capacity (standard) with optional paper trays	250 + 100 1,410	250 + 100 1,410	250 + 100 1,410	250 + 100 1,410

# Feature-rich for high level printing and day-to-day office needs

## Stronger security

Keep documents confidential with Private Print and optional Card Release, so users can view all print jobs before selecting which ones to print.

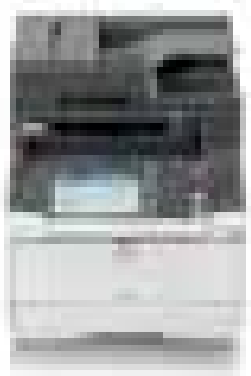


## Improved connectivity

Wireless Direct offers concurrent connection of wired and wireless networking in a safe way. Wireless accessory is available for all models.

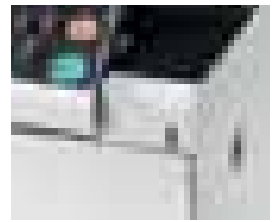
## Automatic duplex printing, copying, scanning and faxing as standard<sup>1</sup>

Reverse Automatic Document Feeder (RADF) for simple, efficient and cost-effective handling of multi-page, single and double sided documents.



## Direct printing and scanning

Print directly from or scan directly to a USB stick without the need of a PC, providing added flexibility and improving user efficiency.



## Cost saving, high capacity toners

High capacity toner cartridges reduce total cost of ownership and user intervention.



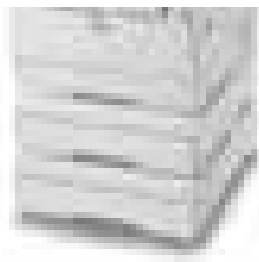
## User friendly and easy to operate

Easy and quick customisable 7" colour LCD touch screen<sup>2</sup>, intuitive menu and enhanced help functionality; place frequently-used functions on the home screen for quick access. Firmware update tool for easy changes.



## Perfect for high volume print jobs

With high speeds of 30ppm and a maximum paper capacity of 1,410 sheets with the 2 optional paper trays you can support high volume print requirements in-house.



## Flexible media handling

Print on a wide range of media sizes and weights, from A6 to 1.3m long and from 64 up to 220gsm and up to 176gsm in duplex.



# Functionality to improve your productivity and workflow



## Print

Built on award-winning technology, the ES5400/ES5400 MFP Series provides sharp, accurate and reliable printing.

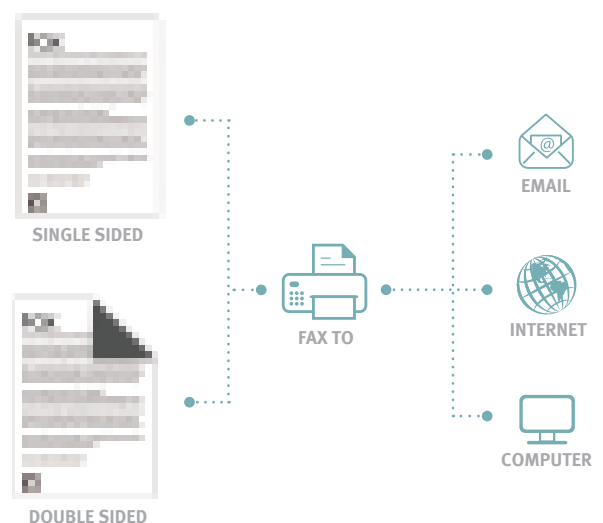
- High resolution 1200 x 1200dpi colour printing for professional business documents
- Print speeds of 30ppm – perfect for time-critical jobs
- Duplex printing as standard – reducing paper consumption and enabling the production of business documents in-house
- Private Print function for protected printing to ensure document confidentiality, including PIN code and encrypted data transmission to the printer/MFP
- Shared Print - Store templates and documents on the device for users to print without authentication
- Maximum paper capacity of up to 1,410 sheets with 2 optional paper trays, keeping user intervention to a minimum
- Auto sensing multi-purpose tray (MPT) for printing on a wide variety of media sizes and weights
- Release print jobs with Card Release and select document form print queue
- Save money by printing Barcodes from SAP without additional Barcode module



## Fax

The ES5400 MFP Series offer enhanced fax functionality, delivering Super G3 speed with intuitive controls that improve efficiency and document management.

- Super G3 speed enables faxes to be sent and received at high speed
- Forward faxes to another fax machine
- Forward faxes directly to an email address
- Edge removal automatically cleans up images
- Store and view incoming faxes on 7" colour LCD touch screen (ES5473 MFP) prior to printing to save money
- Save time with up to 40 touch screen buttons and 300 speed dials to retrieve regularly used numbers



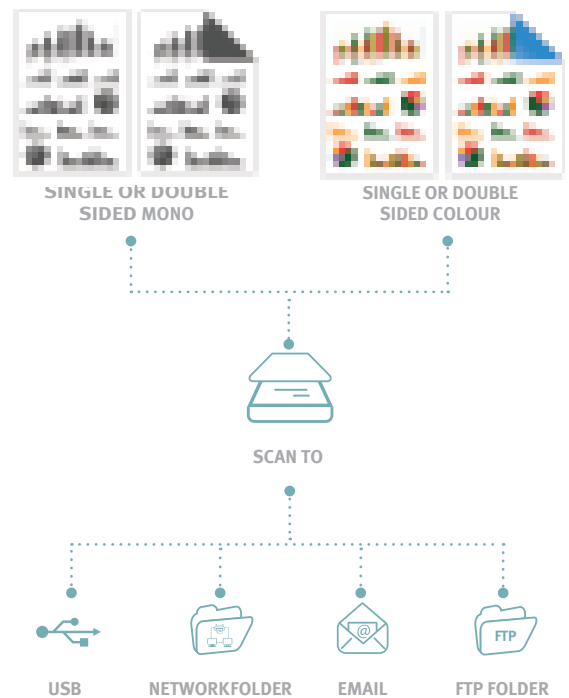
Ergonomically designed with user-friendly and intuitive displays to quickly guide you through each task. Job macro function records and instantly recalls frequently used tasks for highly efficient working.



### Scan

The ES5400 MFP Series include high definition LED colour scanner with a range of functions to improve workflow and productivity in the workplace.

- Fast colour and mono scan speeds of 30ipm
- 50 sheet Reverse Automatic Document Feeder (RADF) makes light work of multi-page, single and double-sided documents
- USB and network TWAIN scanning (PC and Mac)
- Save scan settings for repeated tasks
- LDAP provides direct access to contact and email data from an existing directory server, saving time and improving the reliability of document delivery
- Job Build function enables a number of different documents to be scanned to create one single document output
- Scan directly to: USB, network folder, email and FTP server for fast and versatile document storage and management
- Blank page skipping



### Copy

The ES5400 MFP Series LED scanning and printing delivers superior copy quality for clear, accurate and fast results.

- Multi page documents, single or double sided, are handled with ease
- Fast, high quality colour and mono copy output
- Job Macro function enables you to programme frequently used copy settings
- ID card copy for simple copying of double-side ID cards on a single sheet
- Background removal allows user to eliminate artefacts copied from glass or media on printed output
- Document collation automatically sorts copies of multi-page documents, saving time



## Improving efficiency and reducing environmental impact

The ES5400/ES5400 MFP Series incorporates a wide range of Eco-friendly features to help your organisation reduce its energy consumption, impact on the environment and ongoing costs.



### Consolidating multiple devices into one

The ES5400 MFP Series brings together several devices into one efficient model reducing:

- **Energy usage** – lowering your environment footprint
- **Consumables consumption** – saving you money

### Reducing power consumption

100% based on LED technology that inherently consumes less energy

- **Eco Mode** – improves throughput performance and reduces energy consumption
- **Deep Sleep Mode** – reduces energy consumption to less than 1.4W
- **Quiet Mode** – reduces noise levels and energy consumption

### Duplex printing, copying, scanning and faxing as standard

- Reduces paper usage
- Enables printing professional documents in-house

### Reducing toner usage

- **Toner Save function** – reduces the amount of toner used when printing draft or internal documents. Select 3 levels of print quality
- **Free recycling programme** – OKI offers customers a free consumables recycling programme. Currently 97% of all materials returned through the scheme are recycled

### Advanced fax<sup>1</sup> functionality reduces need for printing

A range of fax features can help to reduce fax print volumes, saving energy, consumables and telecom costs:

- Send a fax to any PC on the network without the need for printing
- Store and view incoming faxes on 7” LCD touch screen prior to printing to save paper
- Block junk faxes to prevent unnecessary printing
- Internet fax reduces telecom costs

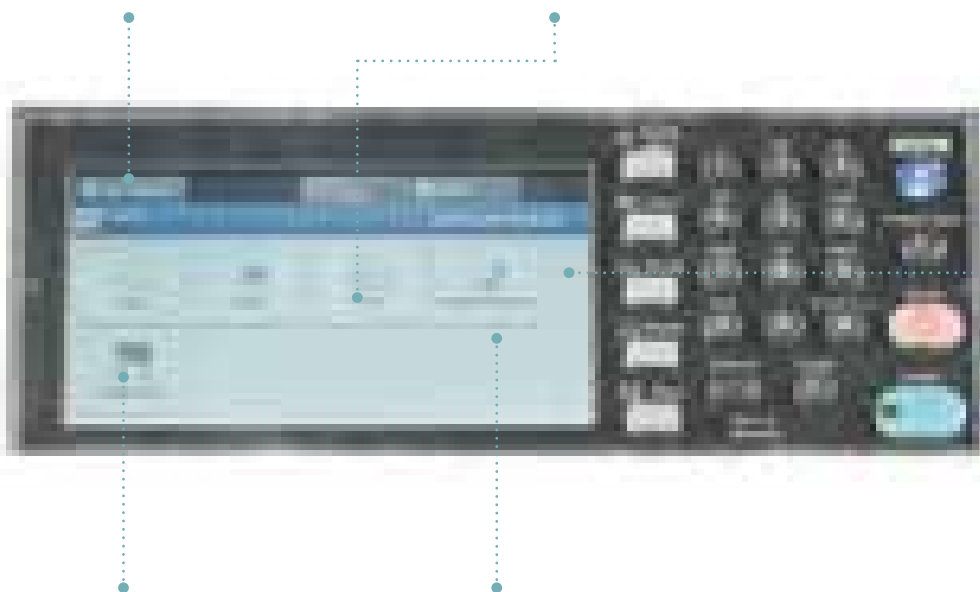
## Bring ease of use to your fingertips

Usability of the ES5442dn and ES5473 MFP is further improved with a user-friendly 7” colour LCD touch screen.

**Job Macro function** allows users to record and re-use key sequences to speed up frequently used operations

**Dedicated function buttons** take you quickly and directly to the desired mode of operation

**Customise** your home screen quickly and easily to put frequently used functions at your fingertips for fast efficient working



**QWERTY keyboard** to simplify data and email address entry

**Enhanced help function** for handy, on screen graphic and text explanations

**Store and view** incoming faxes prior to printing to save paper

# Solutions to enhance your print and document workflow

## Built into the device



### Mobile Printing

OKI enables today's mobile workforce to print wirelessly from any laptop, tablet or smartphone with smart printers and multifunction printers compatible with AirPrint and Google Cloud Print.

For further information on mobile printing visit our dedicated web page [www.okieurope.com/mobileprinting](http://www.okieurope.com/mobileprinting)



### Security

Encrypted secure PIN printing and user authentication all help to protect documents. These are complemented by Wireless Direct for the concurrent connection of wired and wireless networking in a safe way, optional Card Release for keeping confidential documents secure, Private Print which enables you to select a document from a print queue and release with a pin.

## Software and Utilities

### ABBYY FineReader Sprint<sup>3</sup>



#### One-click OCR and conversion utility at no cost

The desktop PC/Mac software ABBYY FineReader® helps you create editable, searchable files from paper documents, PDF files or digital photos, saving time as well as the hassle of retyping documents.

- Edit a scanned document or an image PDF and create new documents into editable files without the need to reformat the structure, tables, columns, font styles and sizes within your documents
- Search and archive documents for quick and convenient retrieval by converting them into searchable PDF and PDF/A formats
- Convert documents into mobile-friendly formats, perfect for use with e-book readers, tablets or smartphones



### Smart PrintSuperVision

#### For the management and control of networked printers and MFPs

With a powerful reporting structure, sPSV allows IT managers to take control of devices and troubleshoot any problems without user intervention, providing complete control and visibility of all printers, across your network.

Providing visibility and control of your organisation's print spend, sPSV enables you to restrict access to individuals or groups and manage printing and copying within defined cost limits. sPSV also provides the ability to report on usage across the network, capturing information on volume, paper size, media type and consumables usage.

## OKI's open platform<sup>2</sup>

### (smart extendable platform) at the heart of your business productivity

OKI smart printers and multifunction printers come with sXP, an open platform to help streamline your document intensive business processes.

This web services based platform enables seamless integration of these smart multifunction printers with your bespoke system or third party solutions, for example SENDYS Explorer, PaperCut MF and Drive Image. This ensures that your document capture, distribution, management and output is efficiently executed and implemented, improving the productivity of your staff.

Software development kit (SDK) is also available for a rapid development of Tailor-made solutions.

## Smart Solutions

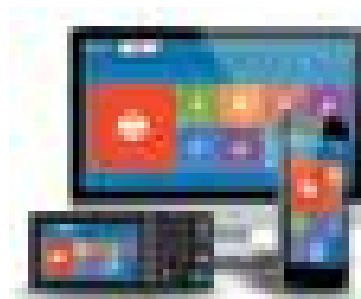
### SENDYS Explorer<sup>2</sup>



#### Document management at no extra cost

SENDYS Explorer enables businesses to do everything they need to do to capture, convert, distribute, upload or print documents. This, for the first time, brings exceptional document management capability to the smaller business, especially as all functionalities are also accessible through a smartphone/tablet app.

- **Document capture:** from MFP, smartphone/tablet, desktop web interface and email
- **Document conversion:** Transform scanned documents into a wide range of editable formats
- **Document hub:** Distribute scanned files
- **Direct-Print:** Any document scanned or retrieved from the cloud directly from the MFP panel, smartphone/tablet or web interface



## Why OKI?

OKI is the business printing specialist.

Our single-minded aim is to help businesses to grow and to prosper by enabling them to create the best possible impression with their printed communications. By building on our proven, reliable, single-pass technology, we have developed fast, high quality, cost-effective printing solutions that benefit businesses today and into the future.

We also know how important reliability is for customers. That's why every one of our products is built to perform, day in, day out, helping to maintain business efficiency and provide that competitive edge.

OKI. No one does more in business printing.



## Considering the Environment

As part of the OKI Group's Charter of Corporate Conduct, OKI continually reviews its efforts to provide environmentally sound solutions to its customers:

- Our products are designed and manufactured with reducing the impact on the environment in mind.
- Increasing the amount of our hardware products and consumables that are recycled is one of our strategic objectives.
- We feel responsible for conducting our business in an environmentally sound manner, contributing to conservation and activities within our local communities.

OKI's Green Leaf symbol, found on all products and packaging, represents our total commitment to collection, recycling and environmental processes.

## Why Executive Series?

Heritage of award winning products.

Building on OKI's heritage of award winning products, the exclusive Executive Series range of Multifunction Products, colour and mono printers provide hassle-free document solutions, budgetary control and enhanced workflow efficiency.

Our selected Executive Series partners can provide a print strategy and tailored solution that delivers total peace of mind through fully serviced products and the benefits of predictable budgeting.



## 20 years of LED Technology

OKI pioneered the development of digital LED technology in printers over 20 years ago. This innovation delivers High Definition printing – for more accurate, striking printed documents. Thanks to this digital LED technology, our printers are compact, environmentally friendly and energy efficient, using significantly less raw materials in the manufacturing process and consuming less energy. LED print heads have no moving parts, making our LED printers robust and ultra reliable.



## High Definition Color

High Definition Color is OKI's own unique set of market defining hardware and software technologies. Together, these components deliver unsurpassed colour printing simply, intelligently, and with perfect results.

## Great colour starts with OKI



Scan here to find out more

<sup>1</sup> ES5400 MFP Series only

<sup>2</sup> ES5442dn and ES5473 MFP only

**OKI EUROPE LTD**

Blays House, Wick Road,  
Egham Surrey, TW20 0HJ.  
UK

T +44 (0)20 8219 2190

[WWW.OKI.COM/EU](http://WWW.OKI.COM/EU)

# OKI

*Open up your dreams*