

OKI

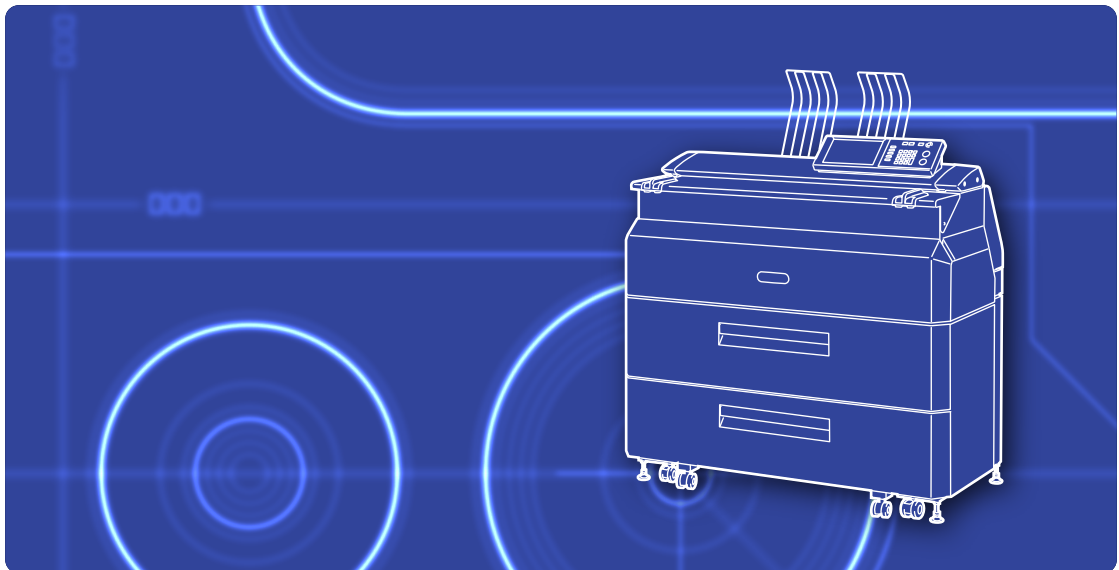
Wide Format Printer
Teriostar LP-2060 Series

Multifunction Model

LP-2060-MF

Quick Reference Guide

U10000088500 December, 2017 Rev. 2



OKI Data Infotech Corporation

Preface

Your Printer is a Teriostar LP-2060 Series Wide Format Printer.

This manual describes the basic operation methods for this model.

For more detailed information, see the User's Manuals on the supplied CD-ROM.

Keep this guide in a place where you can easily read it when required.

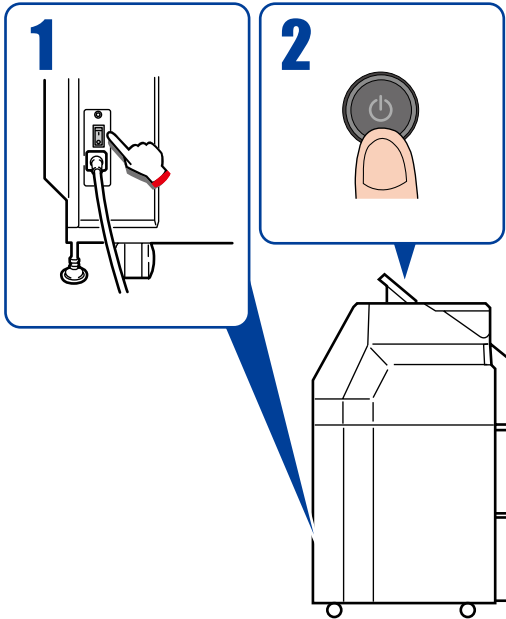
Table of Contents

| | | | |
|--|-----------|--|-----------|
| Turning the Power On/Off | 3 | Operating the Printer from a Computer | 23 |
| Power On | 3 | Troubleshooting | 24 |
| Power Off | 3 | When an Error Message Appears | 24 |
| Mode Buttons | 3 | Smears on a Printout | 24 |
| Replacing the Paper | 4 | Changing the Time Until Power Save Mode | 24 |
| Replacing the Toner Cartridge..... | 6 | Automatic Paper Cutting After a Certain Time | 24 |
| Replacing the Waste Toner Bottle | 8 | Automatic Paper Cutting After Opening | |
| Replacing the Charger Unit | 10 | and Closing a Door | 25 |
| Replacing the Process Cartridge | 12 | Changing the Print Density | 25 |
| Part Names..... | 14 | Wrinkles on Tracing Paper | 25 |
| Paper Jams | 16 | Selecting Paper to Match the Print Data | 25 |
| Copying | 20 | Missing Print or Slow Data Reception | 26 |
| Importing Images (Documents) to a Computer... | 21 | Service Representatives | 29 |
| | | Disposal Method | 29 |

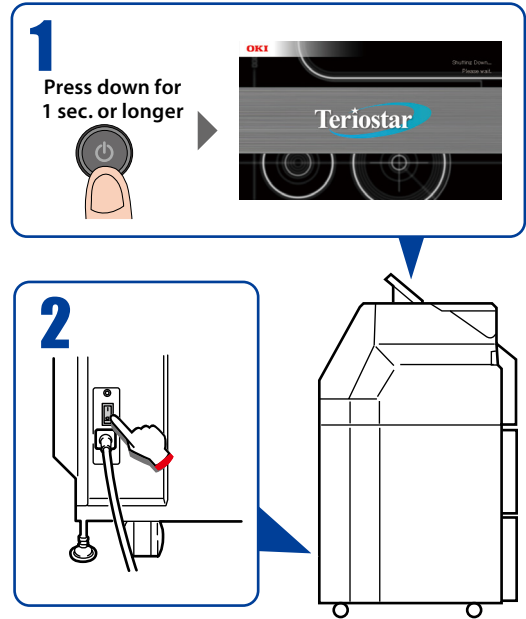


Turning the Power On/Off

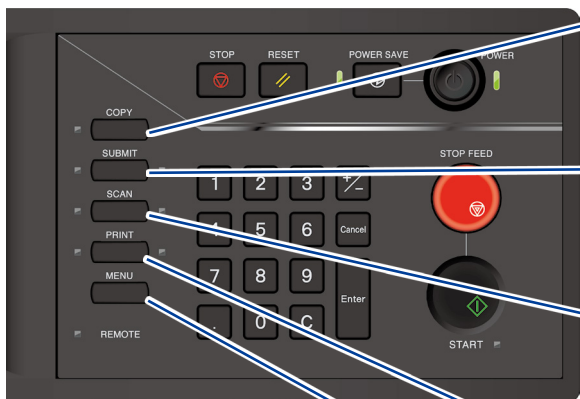
Power On



Power Off



Mode Buttons



● COPY button

Changes to copy mode, and the lamp at the button's left lights up. For more details, see the separate *User's Manual for Multifunction Printer Operation*.

● SUBMIT button

Changes to submission mode, and the lamp at the button's left lights up. For more details, see the separate *User's Manual for Multifunction Printer Operation*.

● SCAN button

Changes to scan mode, and the lamp at the button's left lights up. For more details, see the separate *User's Manual for Multifunction Printer Operation*.

● PRINT button

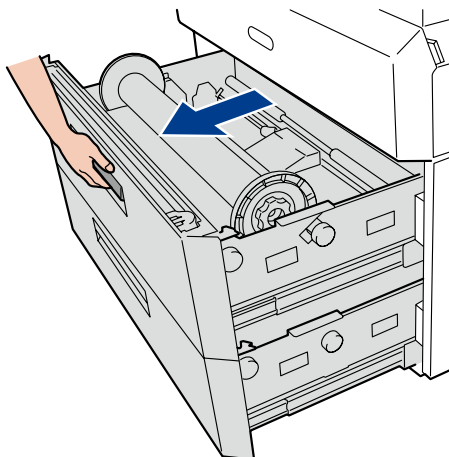
Changes to print mode and enables printing.

● MENU button

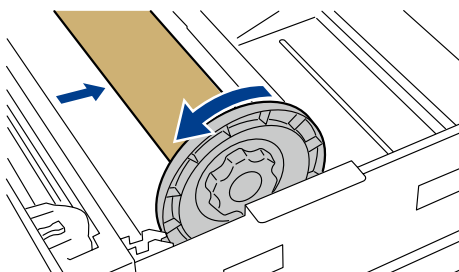
Changes to menu mode, which enables the Printer setting specification.

Replacing the Paper

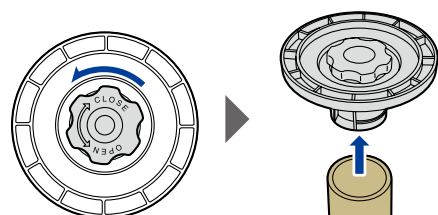
1



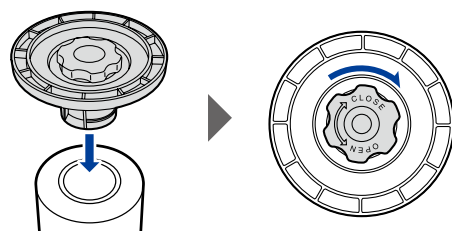
2



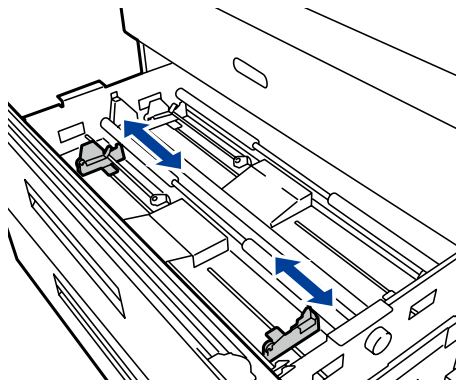
3



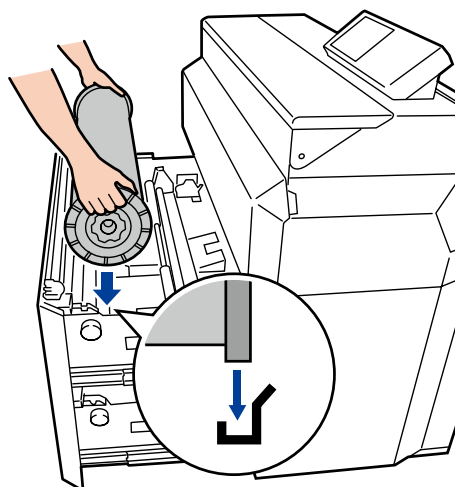
4



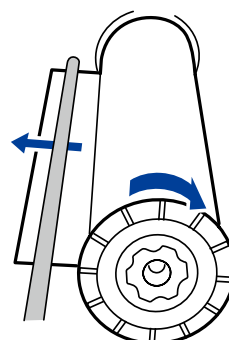
5



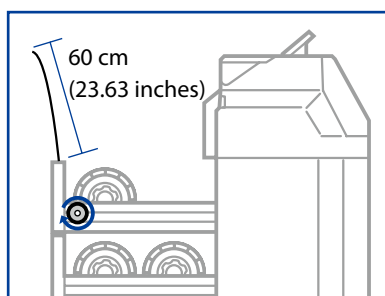
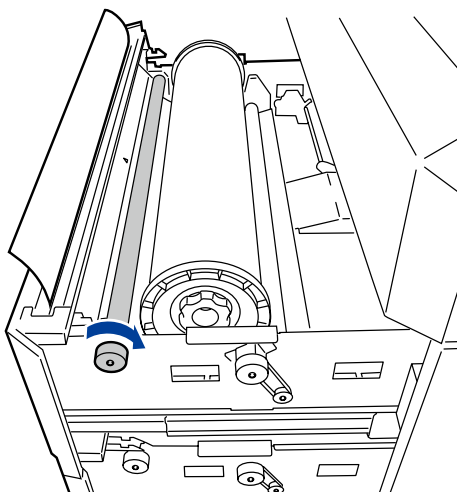
6



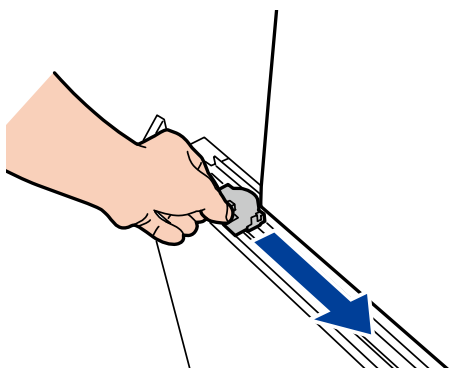
7



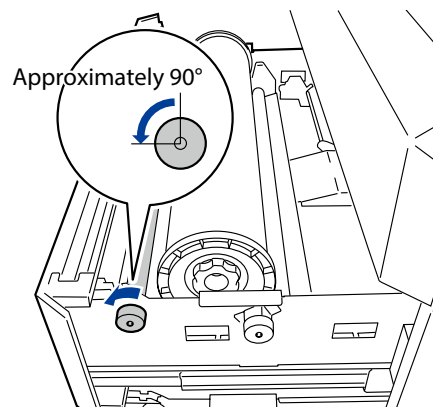
8



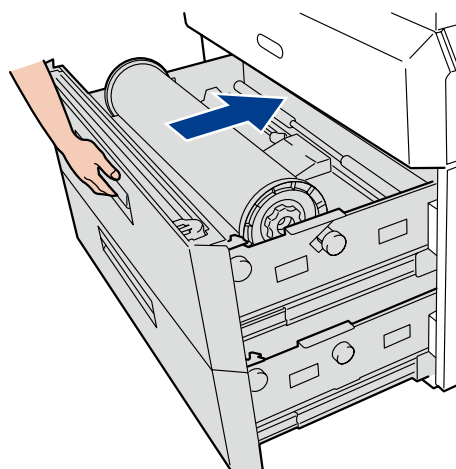
9



10



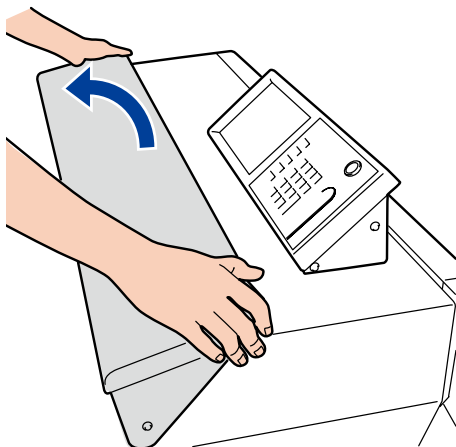
11



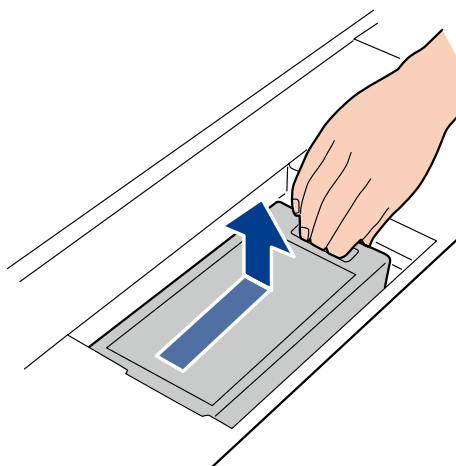


Replacing the Toner Cartridge

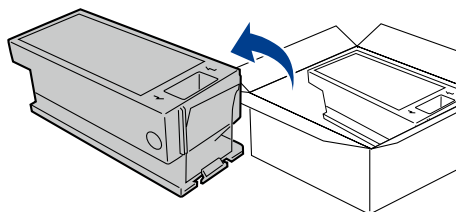
1



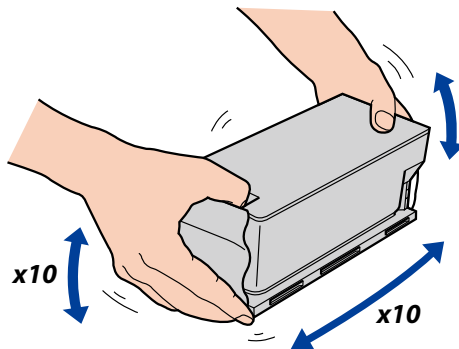
2



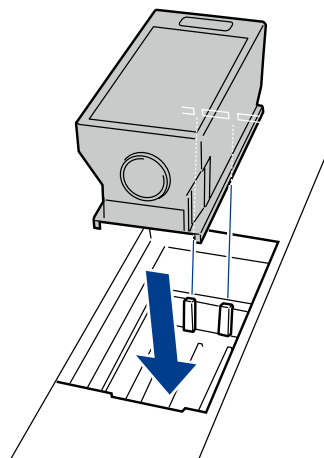
3



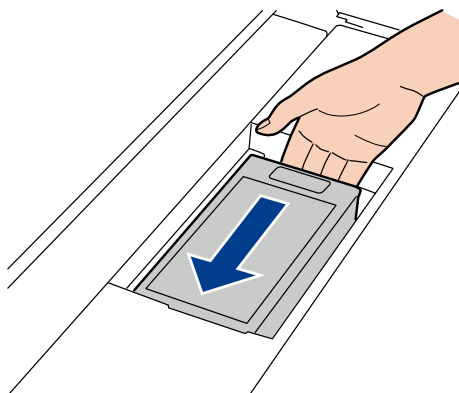
4

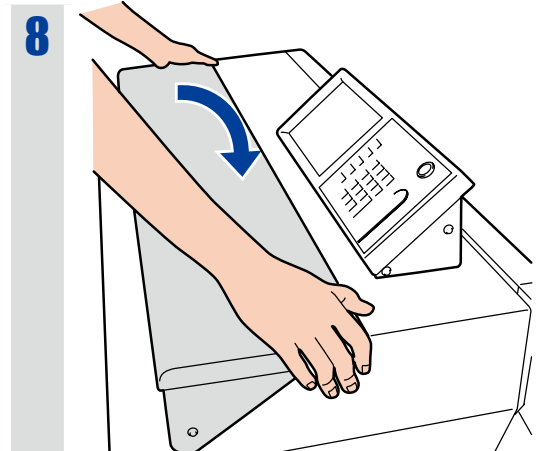
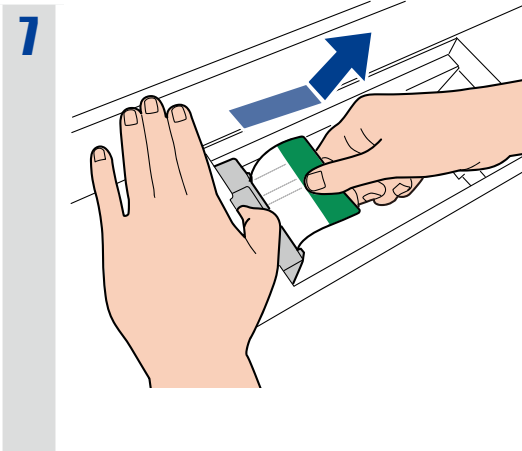


5



6





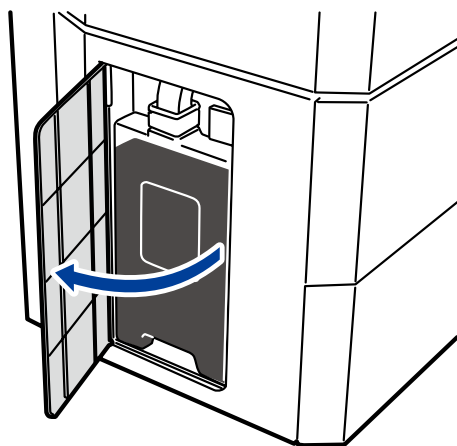
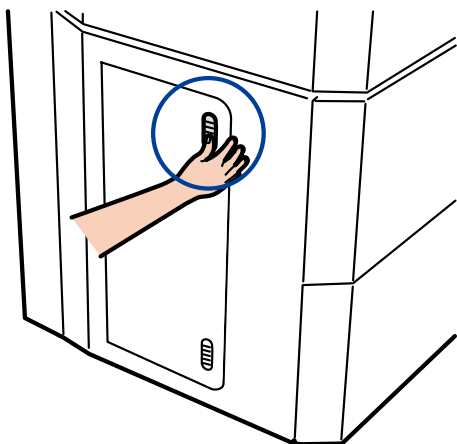
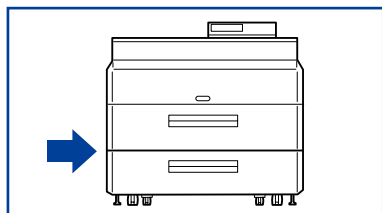
Disposing of Empty Toner Cartridges

Put the used toner cartridge into the bag provided in the box of the new toner cartridge, and dispose of it according to the local regulations.

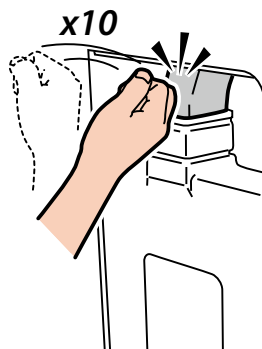


Replacing the Waste Toner Bottle

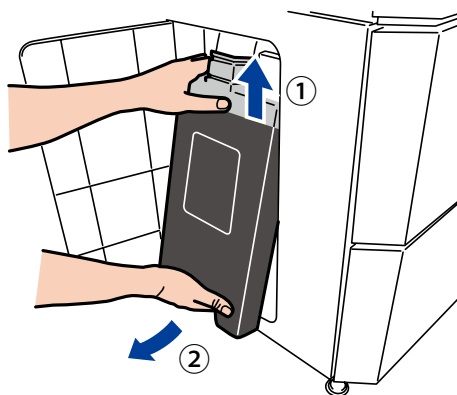
1



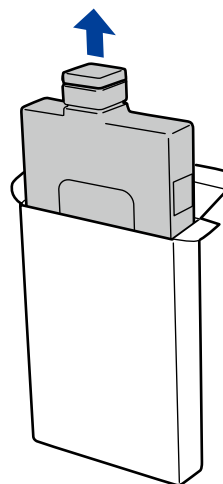
2



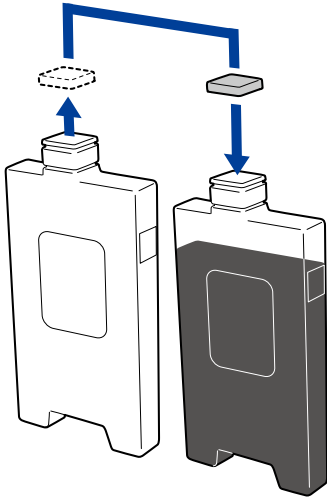
3



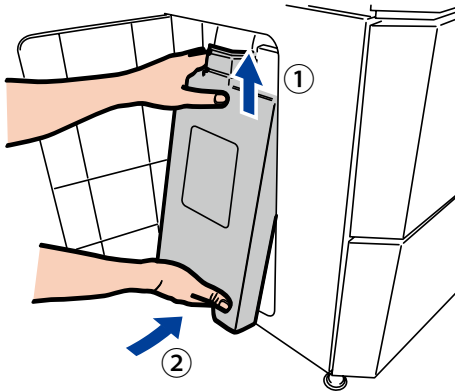
4



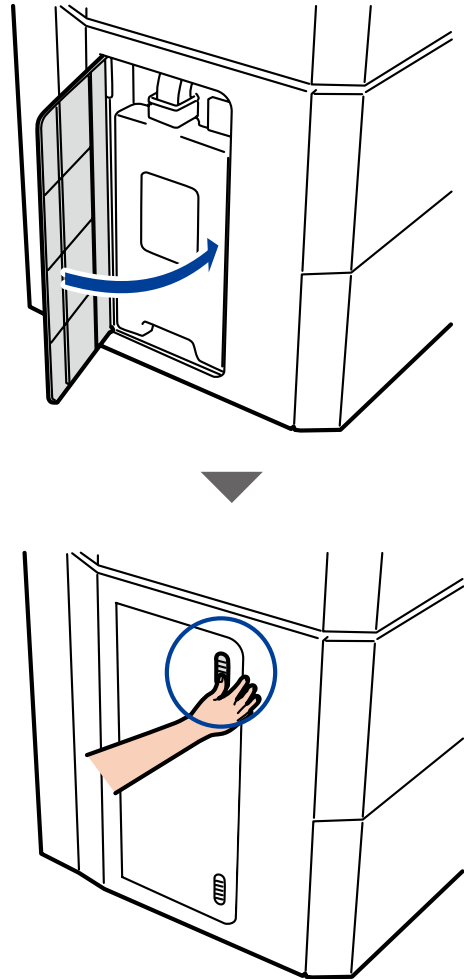
5



6



7



Disposing of Used Toner Bottles

Dispose of the waste toner bottle according to the local regulations.



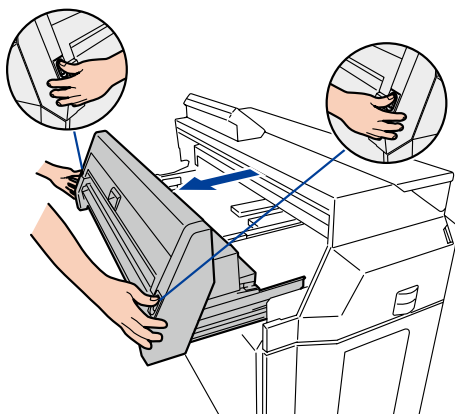
Replacing the Charger Unit

1

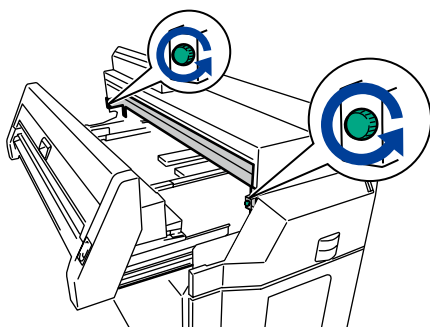
Press down for
1 sec. or longer



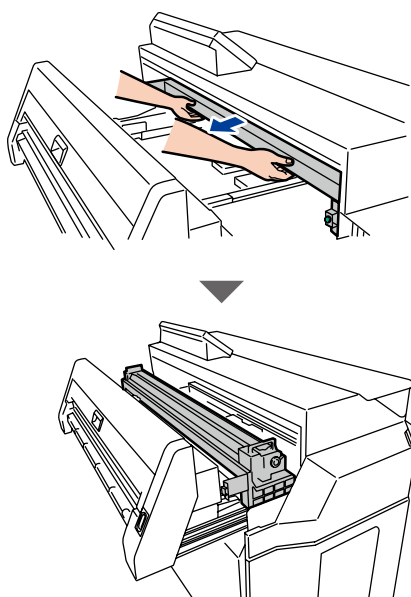
2



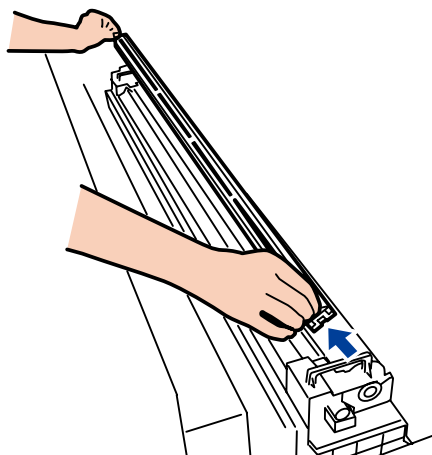
3



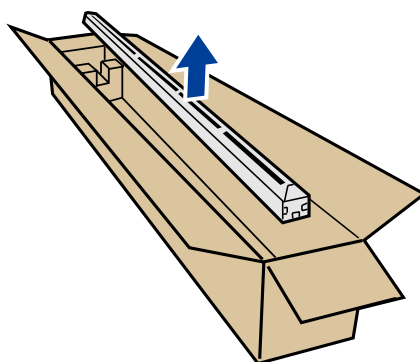
4



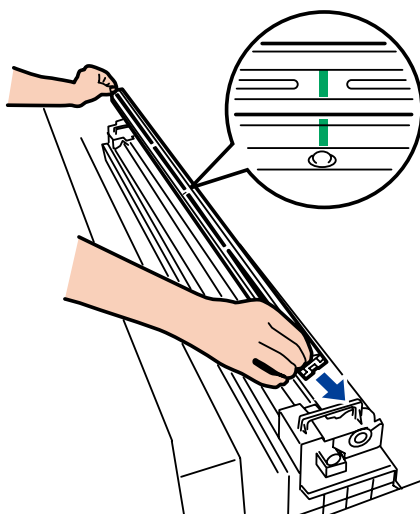
5



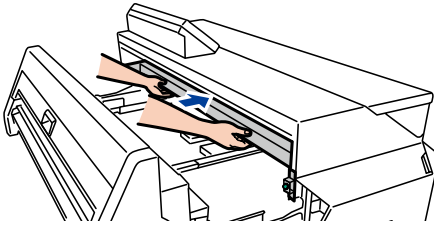
6



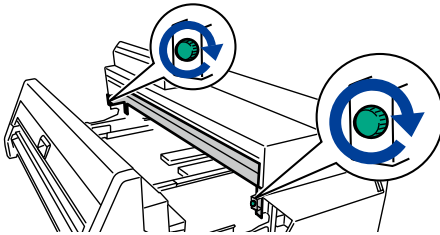
7



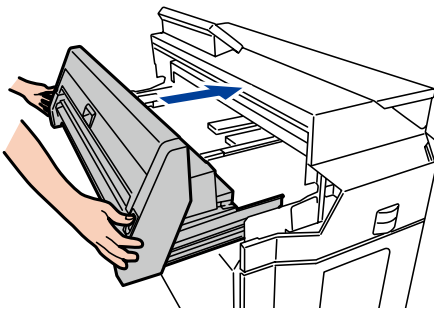
8



9



10



11



TIP ◇ The charger unit can be installed in either direction.

If lines or other defects appear on the printout, inverting the charger unit right and left sides may solve the problem.



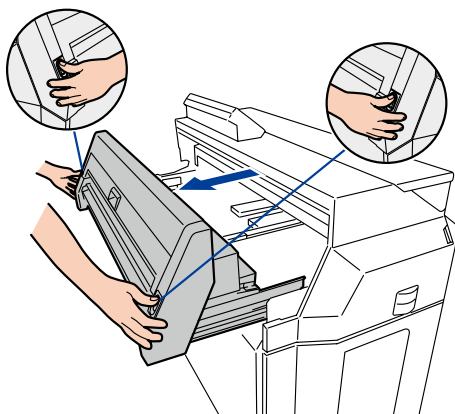
Replacing the Process Cartridge

1

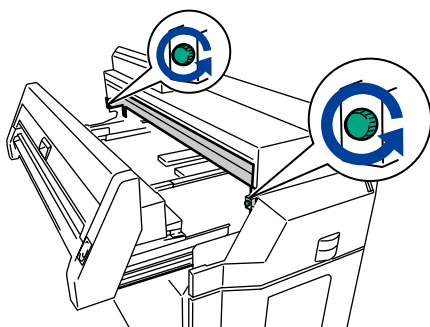
Press down for
1 sec. or longer



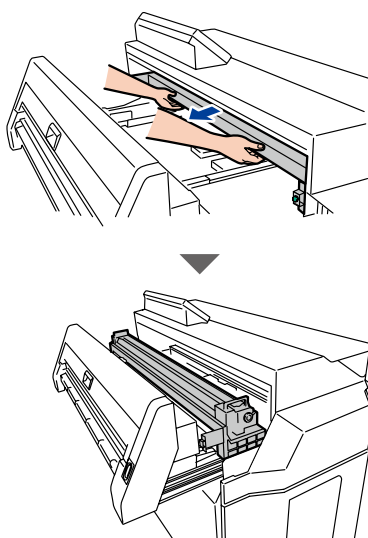
2



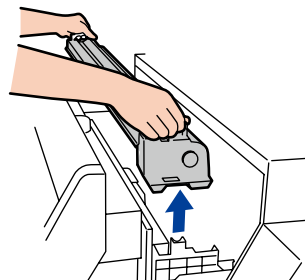
3



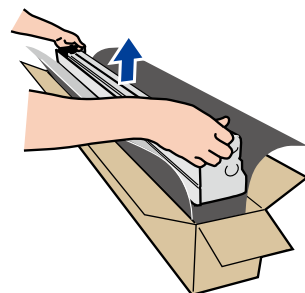
4



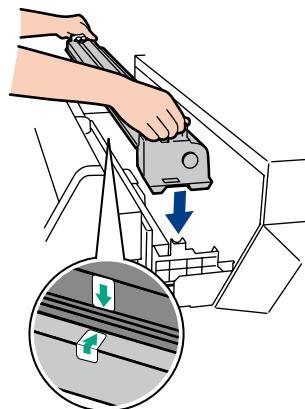
5



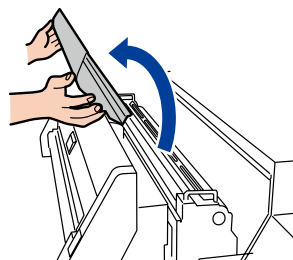
6



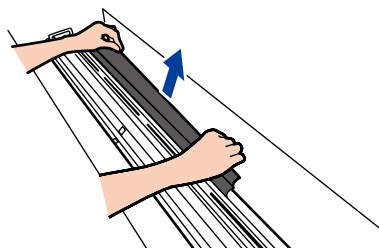
7



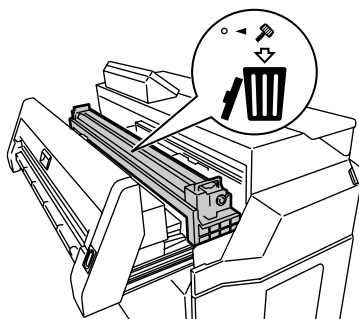
8



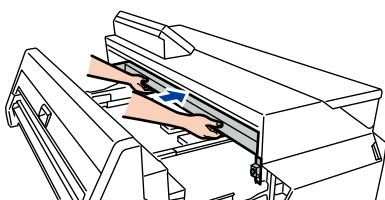
9



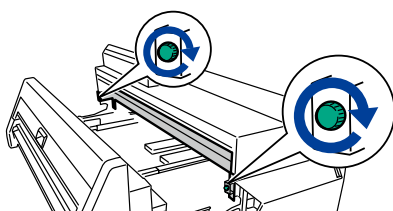
10



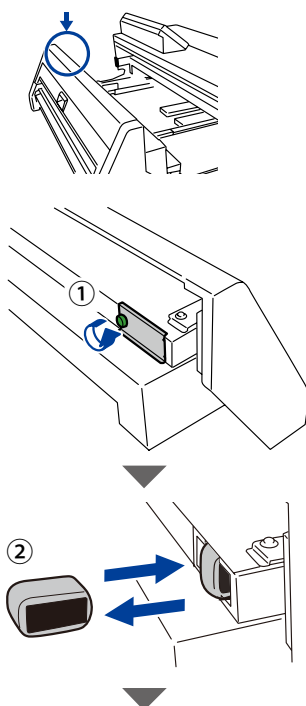
11



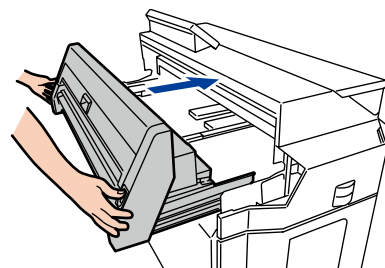
12



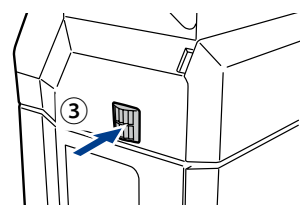
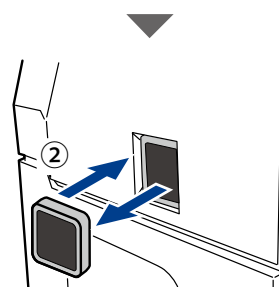
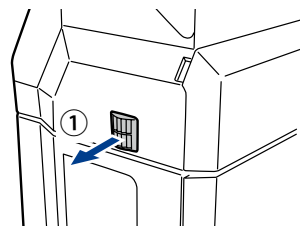
13



14



15



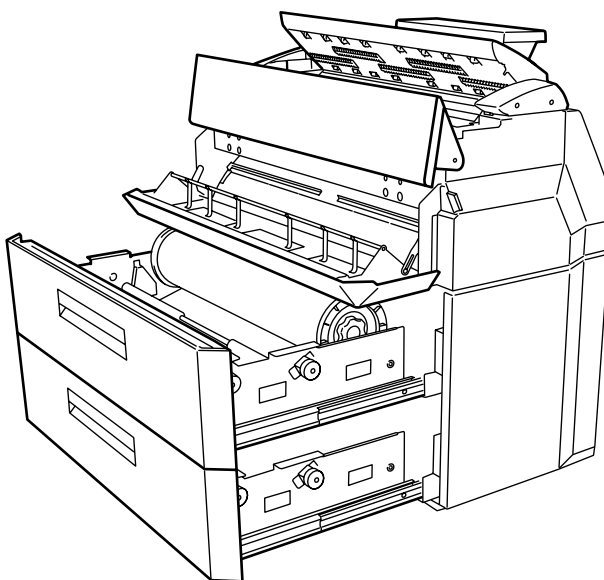
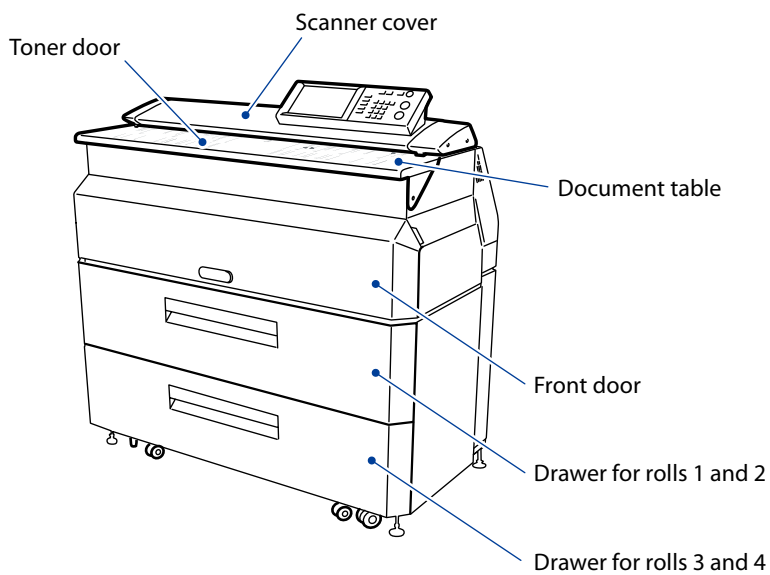
16



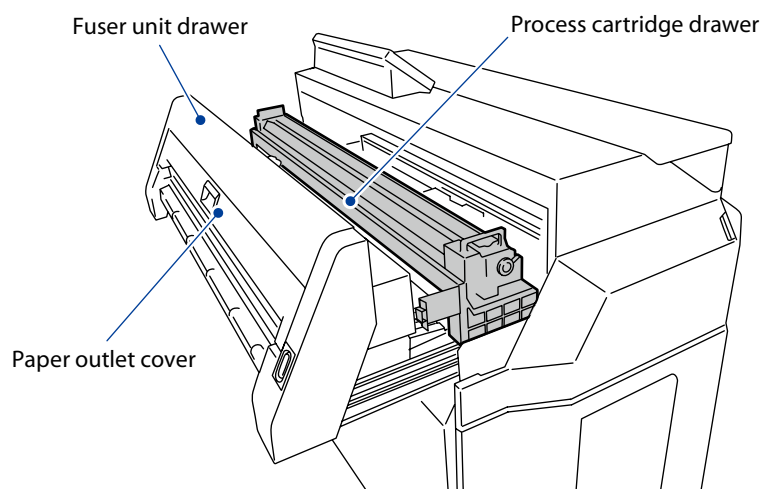
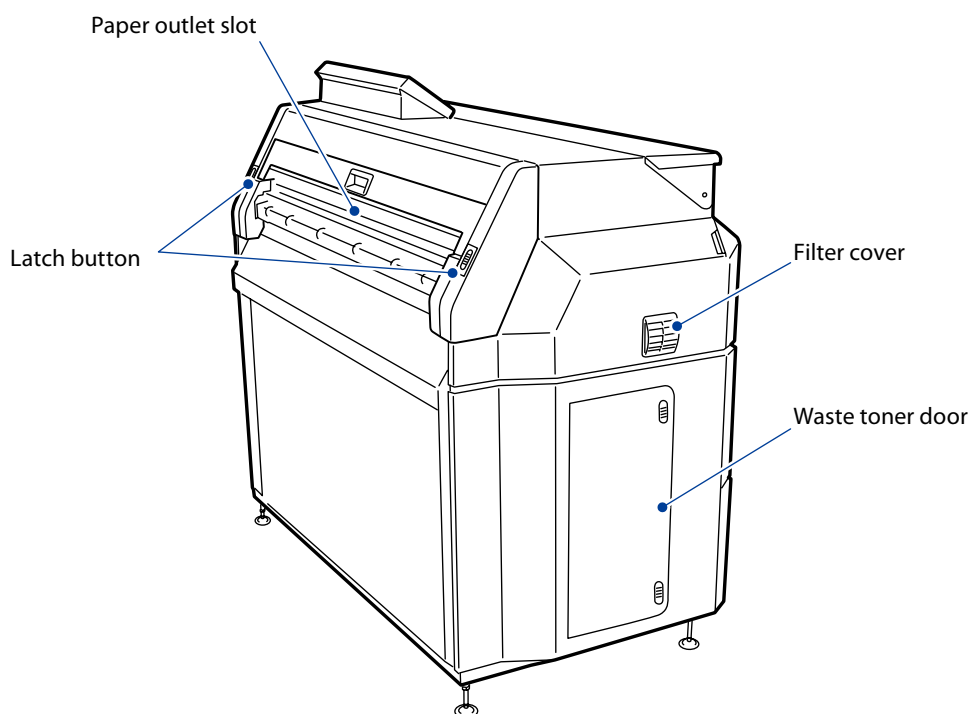


Part Names

Front Side

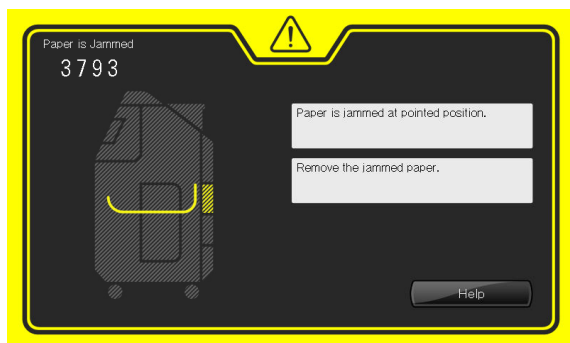


Rear Side

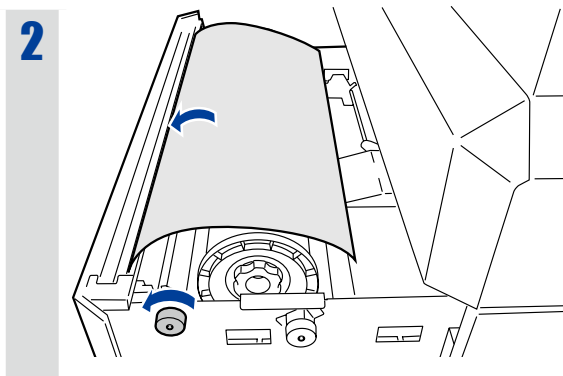
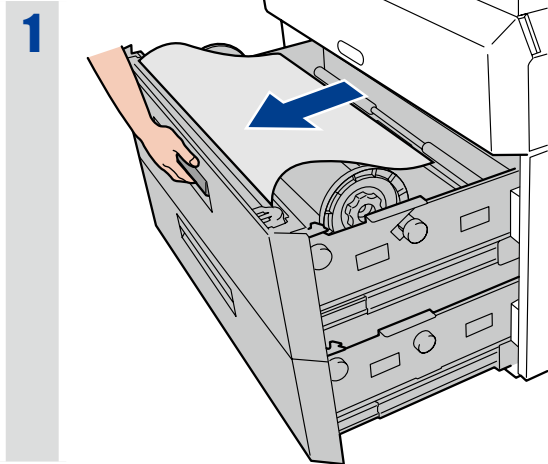


Paper Jams

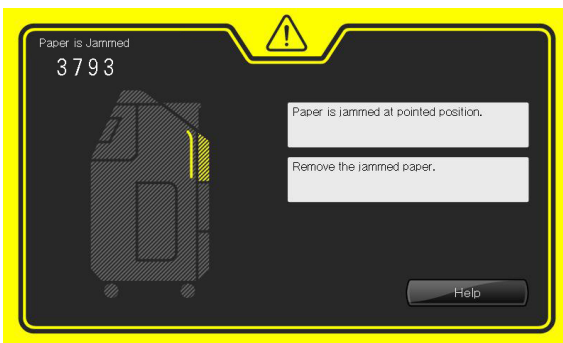
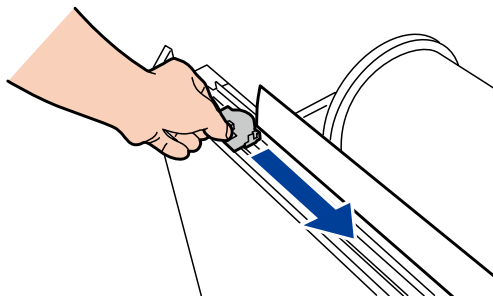
The door requiring action is displayed, in accordance with the paper jam location. Open the specified door and take the appropriate action to remove the paper jam.



➔ Paper jam in a Roll paper drawer

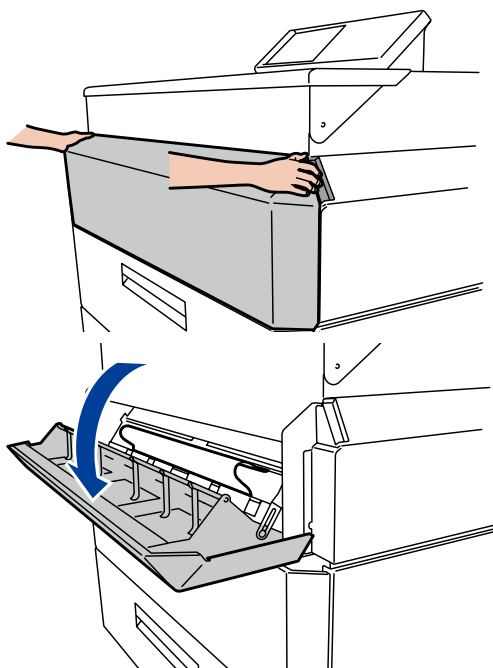


3

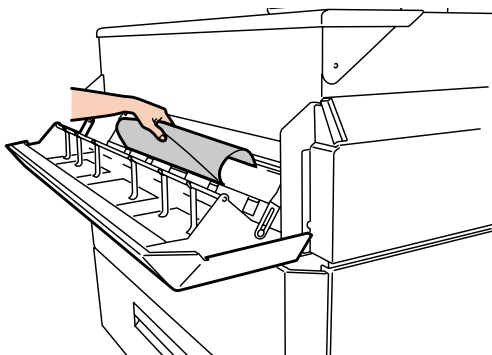


➔ Paper jam in the front door

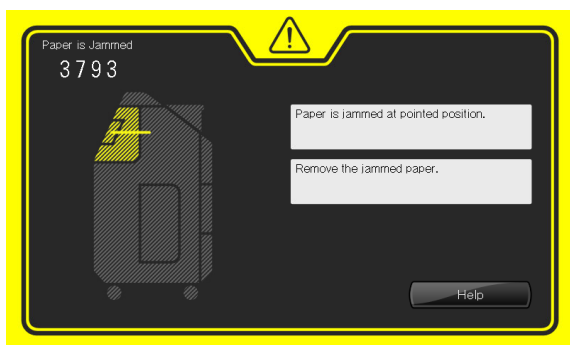
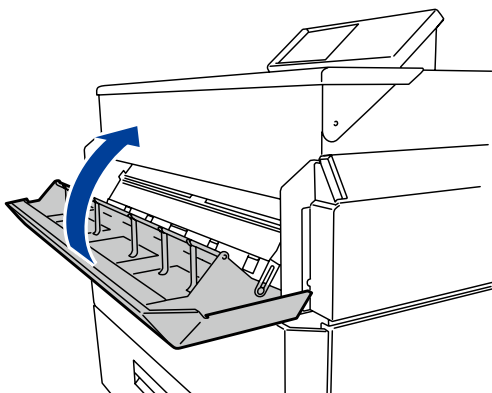
1



2

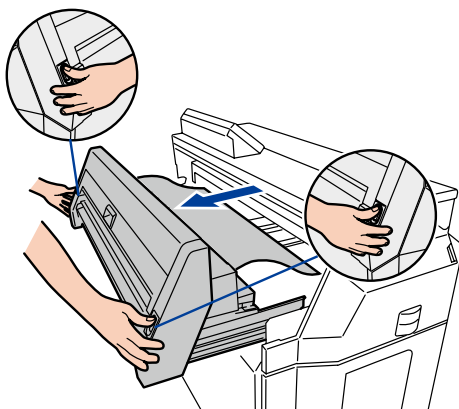


3

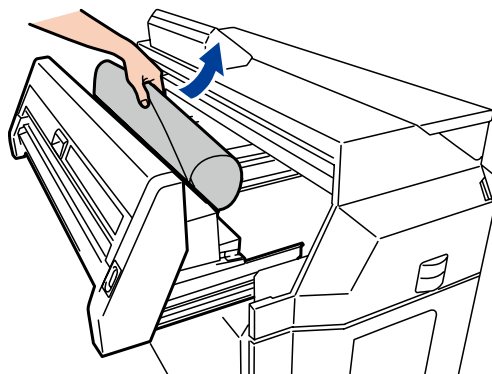


➔ Paper jam in the Fuser unit

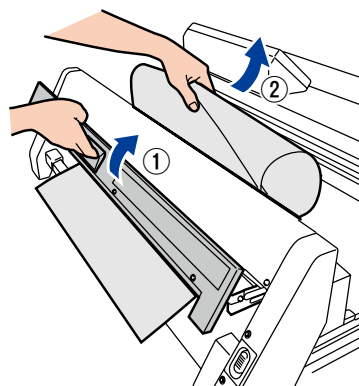
1



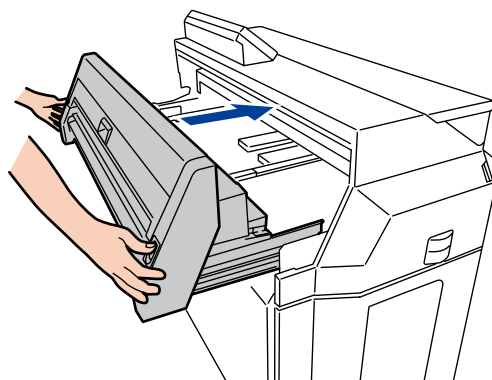
2

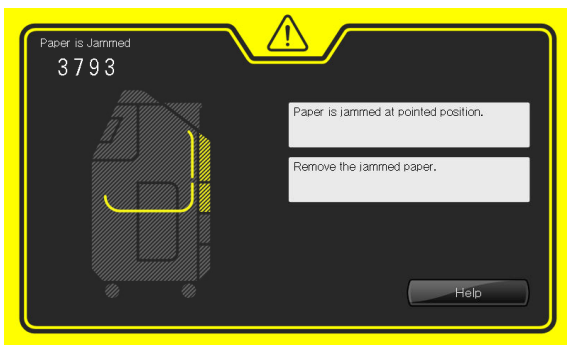


When you cannot pull out the paper easily:



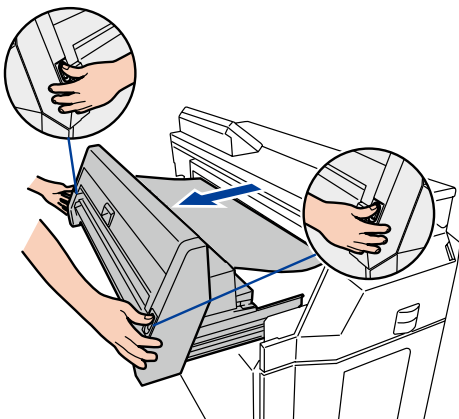
3



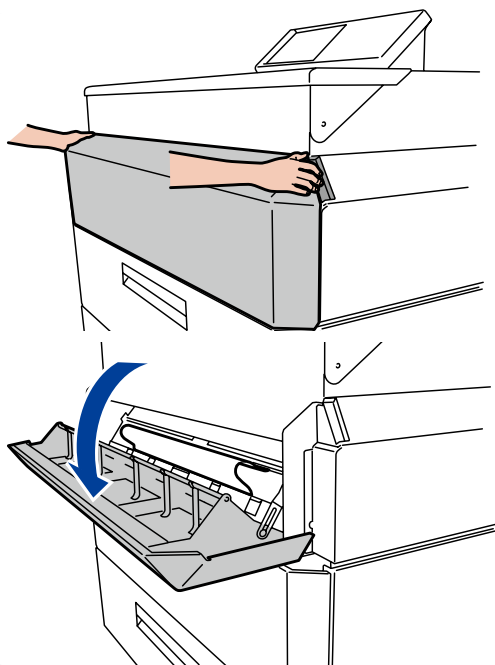


➔ Paper jam in a roll paper drawer or front door

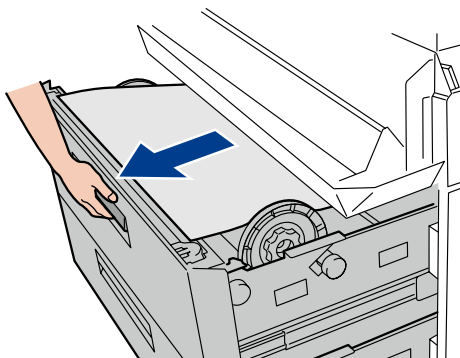
1



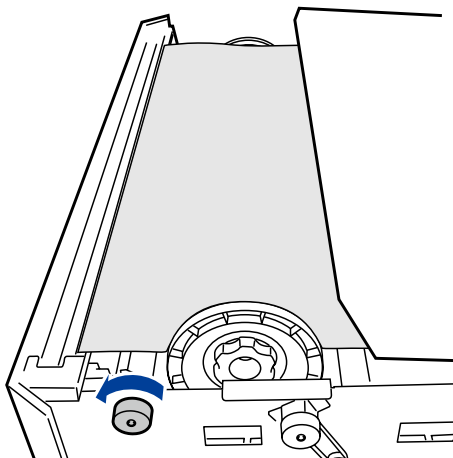
2



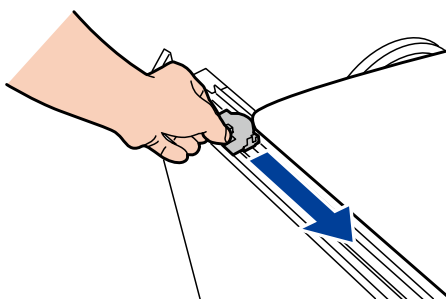
3



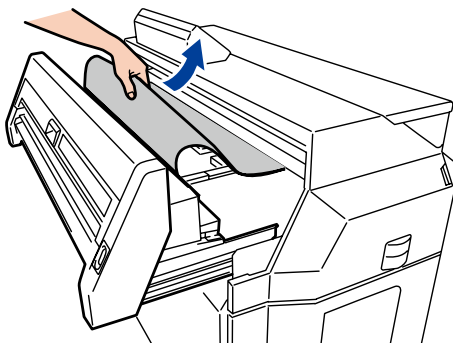
4



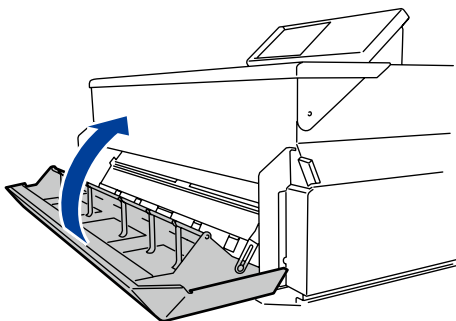
5



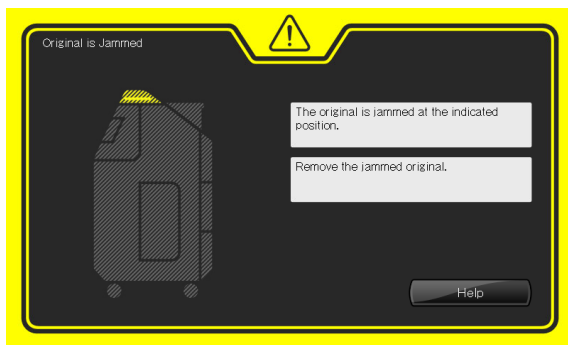
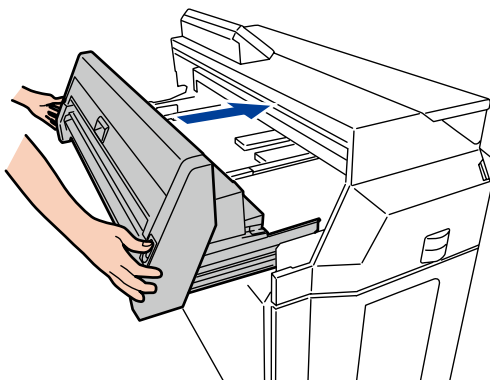
6



7

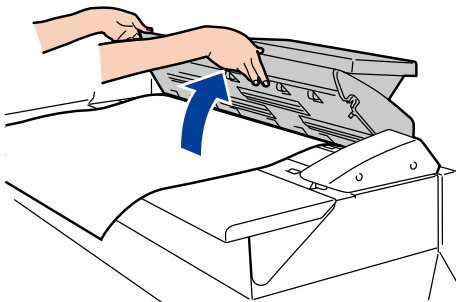


8

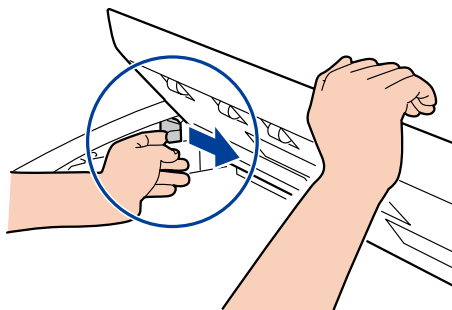


➔ Original jam

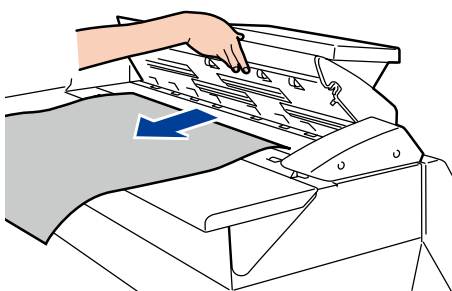
1



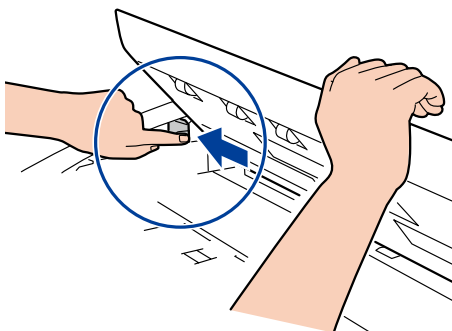
2



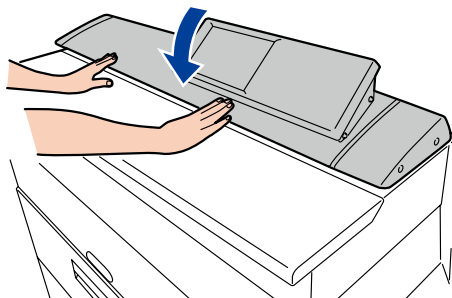
3



4

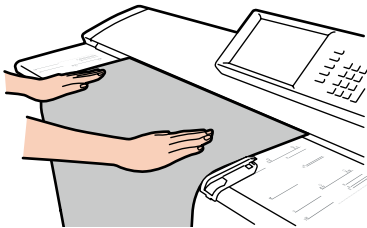


5





Copying



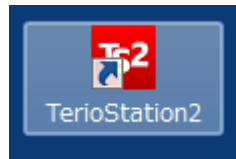
Set the original

Position the original facing down. Set it in the Printer aligned with the original width guide. The inserted original is automatically pulled into the Printer, and set.



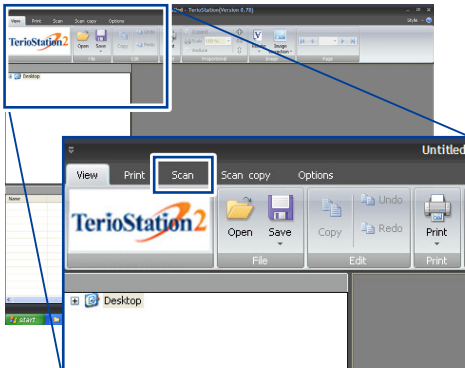
Importing Images (Documents) to a Computer

1



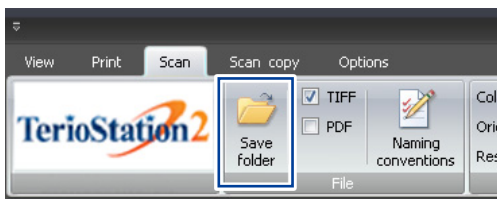
Double-click **TerioStation2**.

2



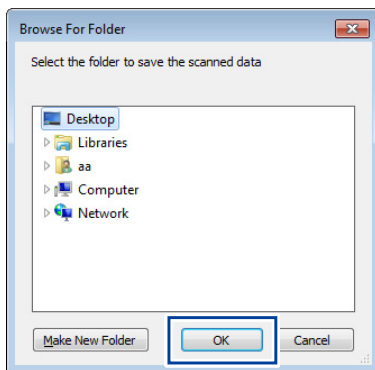
Click the **Scan** tab.

3



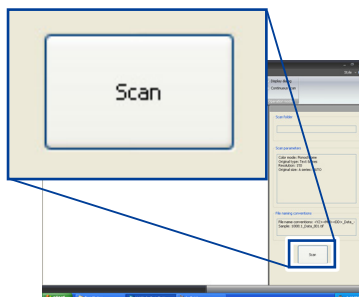
Click **Save Folder**.

4



Select the destination folder to save the scanned data. Click **OK**.

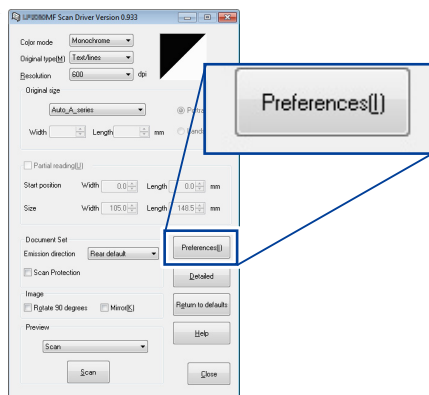
5



Click **Scan**.

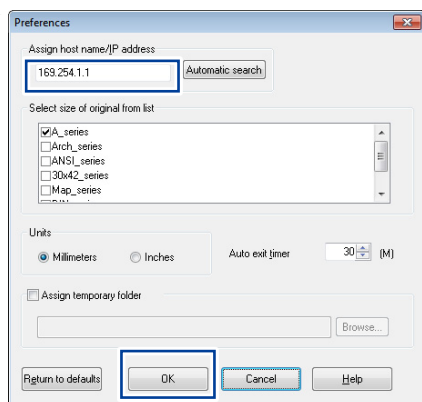
▼ Importing Images (Documents) to a Computer

6



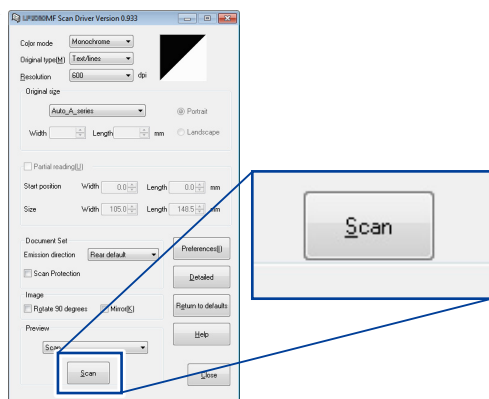
Click **Preferences**.

7



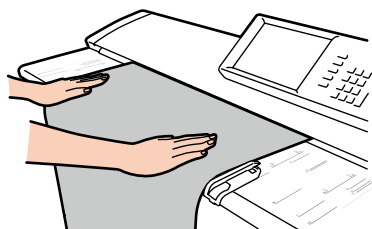
Input the Printer IP address in the **Assign host name/IP address** field. Click **OK**.

8



Set the scan conditions, and then click **Scan**.

9



Load the original.

Important

- ◆ If "Scanner is operating in another mode" is displayed, press SCAN on the operation panel.



Operating the Printer from a Computer

1

Start the web browser and enter "http://(IP address set on the Printer)" in the address field. Press **Enter**.

2

Click **English**.

3

Click an item from the left menu to check the settings or Printer status.

When an Error Message Appears

Take the action specified by the panel message.

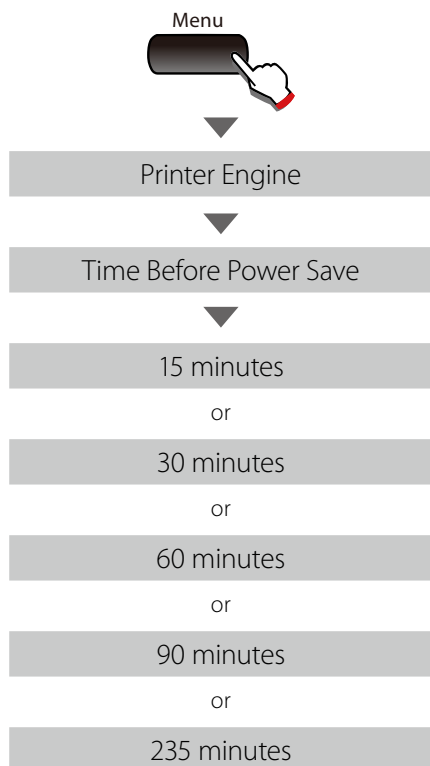
Or see the *User's Manual for Basic Printer Operation, Chapter 4*.

Smears on a Printout

Replace the process cartridge. (📖 page 12)

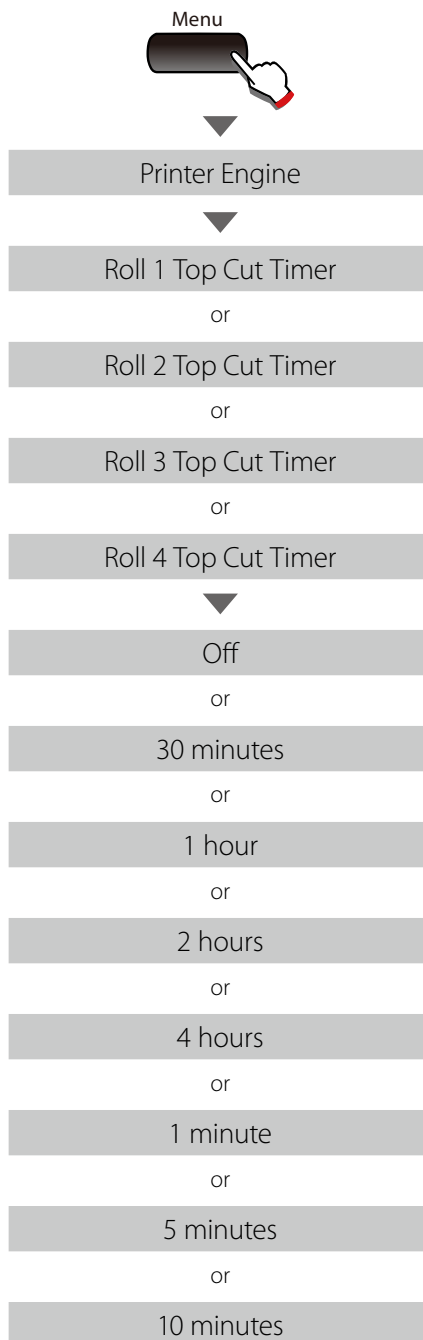
Changing the Time Until Power Save Mode

Set **Time Before Power Save** in the Printer Engine menu.



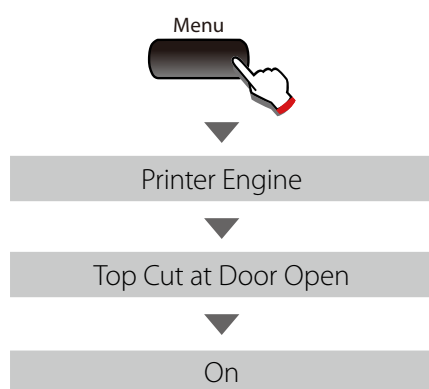
Automatic Paper Cutting After a Certain Time

Set **Top Cut Timer** in the Printer Engine menu.



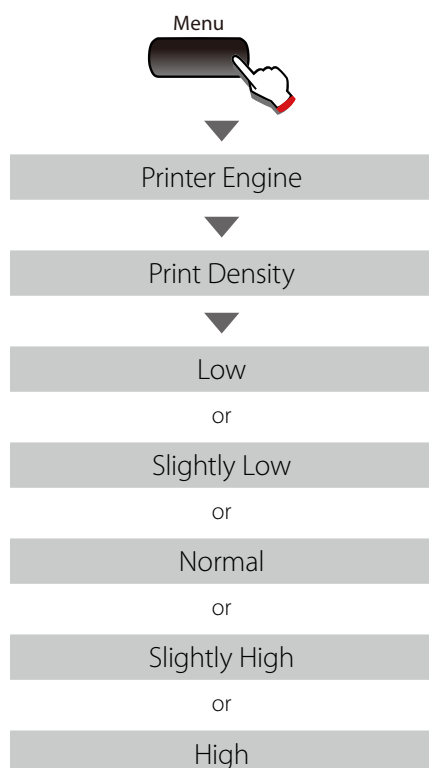
Automatic Paper Cutting After Opening and Closing a Door

Set **Top Cut at Door Open** to **On** in the Printer Engine menu.



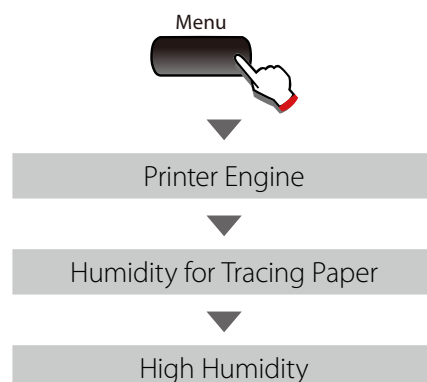
Changing the Print Density

Set **Print Density** in the Printer Engine menu.



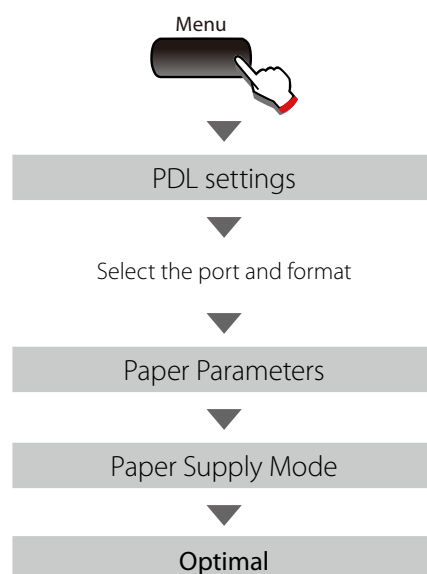
Wrinkles on Tracing Paper

Set **Humidity for Tracing Paper** to **High Humidity** in the Printer Engine menu.



Selecting Paper to Match the Print Data

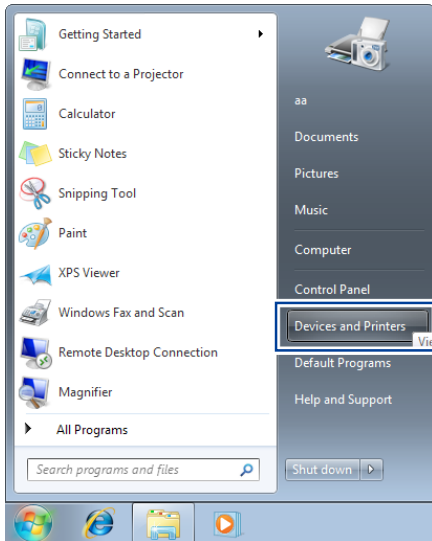
Select **Optimal** at Paper Supply Mode.



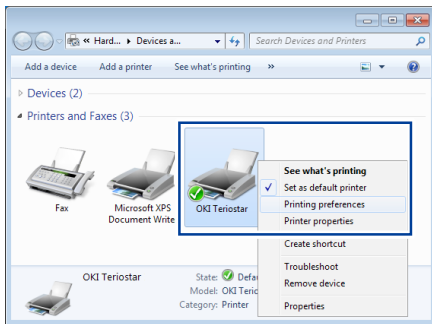
Missing Print or Slow Data Reception

Change the driver settings.

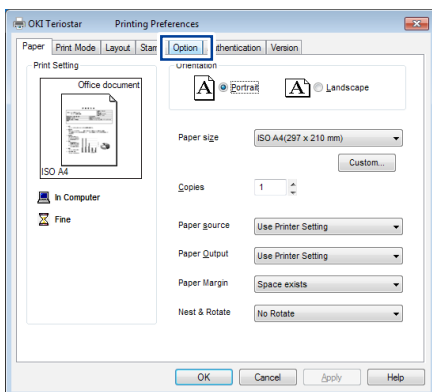
1 In **Start Menu**, open **Devices and Printers**.



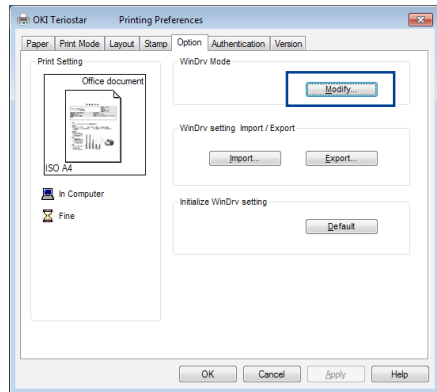
2 Right-click the **OKI LP-2060** icon, and then click **Printing Preferences**.



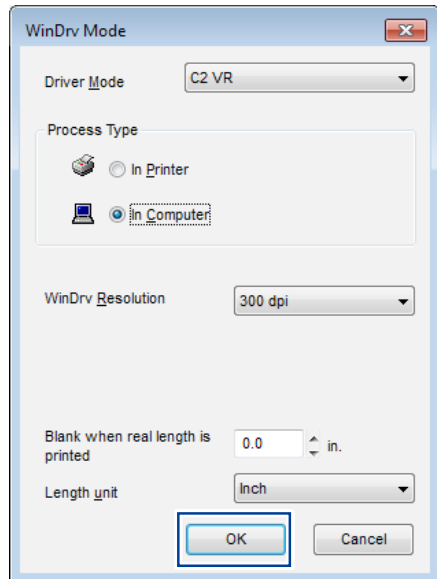
3 Click the **Options** tab.



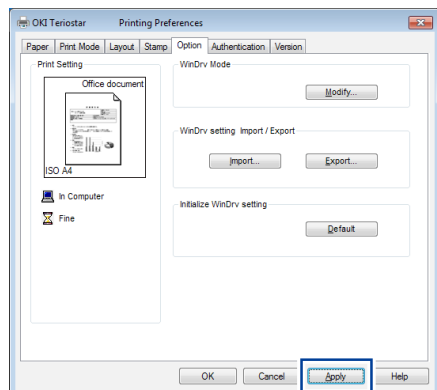
4 Click **Change** in the operation mode of the driver.



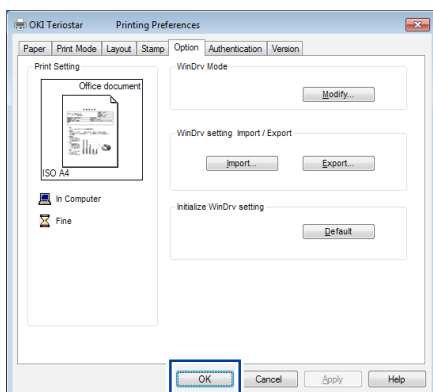
5 Change the output process selection from **Process with Printer** to **Process with Computer**. Click **OK**.



6 Click **Apply**.



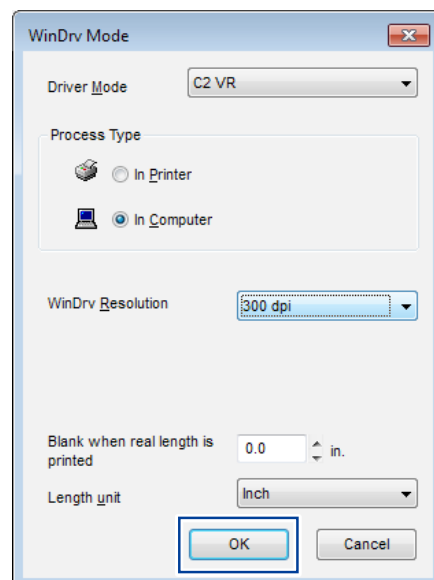
7 Click **OK**.



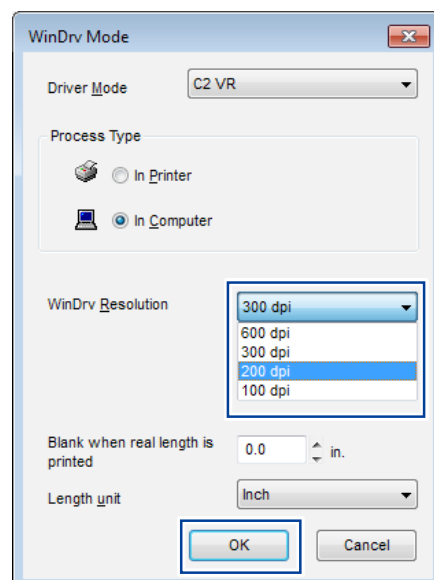
8 Print.
If the symptom persists, perform the following setting operation.

If the problem persists:

1 Perform steps 1 to 4 and open **Driver Operation Mode**.

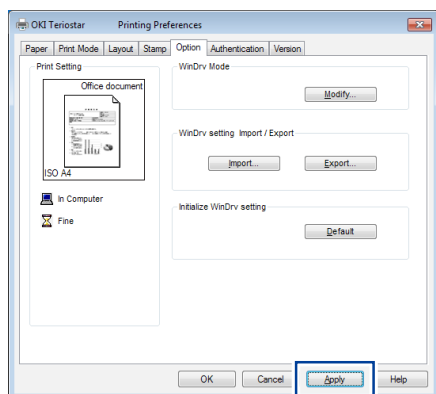


2 Set the resolution of the printer driver to **200dpi** or **100dpi**. Click **OK**.



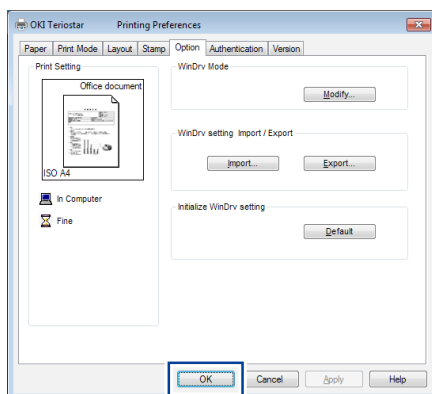
3

Click **Apply**.



4

Click **OK**.



5

Print.

The User's Manuals and driver are on the supplied CD-ROM.



Service Representatives

OKI Data Infotech offers support to ensure you get the most from your Teriostar LP-2060 Series Printer. For details, contact your dealer or nearest service representative.
<http://www.okidata-infotech.com/distributors/index.html>

Disposal Method

Dispose of the used toner cartridges and waste toner bottles according to the local regulations.

This equipment has been tested and found to comply with the limits for a Class A digital device, pursuant to Part 15 of the FCC Rules. These limits are designed to provide reasonable protection against harmful interference when the equipment is operated in a commercial environment.

This equipment generates, uses, and can radiate radio frequency energy and, if not installed and used in accordance with the instruction manual, may cause harmful interference to radio communications.

Operation of this equipment in a residential area is likely to cause harmful interference in which case the user will be required to correct the interference at his own expense.



The CE mark, that shows that the products sold in the EU are conformed to the requirements of EC directive, is statutorily obliged to be affixed to the products.

In each directive, the scope of directive to be applied to equipment is explicitly defined. Our company's product LP-2060 series conforms the EMC directive, low voltage directive and RoHS Directive.

Inquiry of CE mark:

OKI Europe Ltd.

Wide Format Division

Siemensstrasse 9 , D-63263 Neu-Isenburg

Germany

Tel: +49 (0)6102 297 400

Fax: +49 (0)6102 297 50 400

OKI Data Infotech Corporation

8 Nakase 1-chome, Mihama-ku, Chiba-shi, Chiba 261-8507, Japan

Phone : +81 43 211 1363

Fax : +81 43 211 8709

OKI

OKI Data Infotech Corporation

1-8, Nakase, Mihama-ku, Chiba-shi, Chiba, 261-8507, Japan

TEL: (043) 211-1369

U10000088500 December, 2017 Rev.2

Copyright© 2016 OKI Data Infotech Corporation.

All rights reserved.

The contents of this manual may be changed without prior notice.