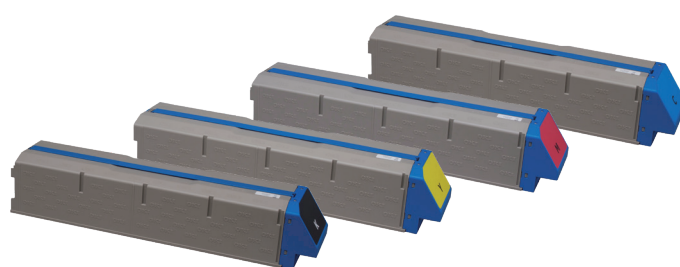




Pro Series Consumables Catalogue 2018



Original Consumables: an integral part of the business solution

With OKI Original Consumables, decades of research and OKI's innovations in LED printing result in perfect harmony between OKI consumables and your print.

From guaranteed page yields and improved productivity to our easy-to-follow videos that guide you through replacing your consumables, it's worth checking that your consumables are OKI Original products.

1



Big on colour, small mono cost

With OKI's LED colour range for the office, it'll never cost you more to print mono pages on an OKI colour device than on a standard mono printer. So you can keep printing your black and white documents and colour is available when you want to stand out. We believe that every business deserves great graphics, reliable printing and flexible media capability.

Always the best quality

From guaranteed page yields and improved productivity to our easy-to-follow videos that guide you through replacing your consumables, it's worth checking that your consumables are OKI Original products.



2

3



Helpful advice when you need it

If you're ever unsure about OKI's products, our dedicated Customer Service Desk and friendly, professional staff are always on hand to help you with any queries you may have, although only about OKI consumables, we can't offer any help or advice about third party consumables.

Guaranteed toner yields

OKI uses ISO-approved testing methods to accurately determine the declared yield for our original toner cartridges. That means you always get the number of pages promised from your OKI Original Consumables.



4

5



Flexibility and creativity

Comprising vibrant four and five-colour technology and innovative printing processes, the new Pro Series from OKI offers print houses and creative firms the flexibility to take creative printing to a whole new level while also improving their own business performance.

Pro Series

Pro Series NeonColor printers

Printer model	Consumable	Order code	Unitary EAN code	Life (pages)	Gross dimensions (mm) w x d x h
Pro6410NC	Black Print Cartridge	46298005	5031713066422	6,000	372 x 166 x 228
Pro6410NC	Neon Cyan Print Cartridge	46298003	5031713066408	6,000	372 x 166 x 228
Pro6410NC	Neon Magenta Print Cartridge	46298002	5031713066392	6,000	372 x 166 x 228
Pro6410NC	Neon Yellow Print Cartridge	46298001	5031713066385	6,000	372 x 166 x 228
Pro6410NC	Neon White Print Cartridge	46298004	5031713066415	6,000	372 x 166 x 228
Pro6410NC	Transfer Belt	44341902	5031713045823	30,000 pages	419 x 369 x 223
Pro6410NC	Fuser Unit	44289103	5031713045816	30,000 (A4 LEF)	378 x 160 x 256

NB Toner yields based on 5% coverage

Pro Series White Toner printers

Printer model	Consumable	Order code	Unitary EAN code	Life (pages)	Gross dimensions (mm) w x d x h
Pro7411WT	White Toner	44318659	5031713056546	6,000	302 x 135 x 74
Pro7411WT	Cyan Toner	44318619	5031713047506	11,500*	302 x 135 x 74
Pro7411WT	Magenta Toner	44318618	5031713047490	11,500*	302 x 135 x 74
Pro7411WT	Yellow Toner	44318617	5031713047483	11,500*	302 x 135 x 74
Pro9420WT	White Toner	44036060	5031713056706	8,000	484 x 102 x 117
Pro9420WT	Cyan Toner	44036027	5031713046400	15,000	484 x 102 x 117
Pro9420WT	Magenta Toner	44036026	5031713046417	15,000	484 x 102 x 117
Pro9420WT	Yellow Toner	44036025	5031713046400	15,000	484 x 102 x 117
Pro7411WT	White Image Drum	01275105	5031713056485	6,000	372 x 149 x 231
Pro7411WT	Cyan Image Drum	01275103	5031713047742	20,000	372 x 149 x 231
Pro7411WT	Magenta Image Drum	01275102	5031713047735	20,000	372 x 149 x 231
Pro7411WT	Yellow Image Drum	01275101	5031713047728	20,000	372 x 149 x 231
Pro9420WT	White Image Drum	44035548	5031713056584	10,000	525 x 160 x 200
Pro9420WT	Cyan Image Drum	44035523	5031713046264	20,000	525 x 160 x 200
Pro9420WT	Magenta Image Drum	44035522	5031713046257	20,000	525 x 160 x 200
Pro9420WT	Yellow Image Drum	44035521	5031713046250	20,000	525 x 160 x 200
Pro7411WT	Transfer Belt	44341902	5031713045823	30,000 pages	419 x 369 x 223
Pro9420WT	Transfer Belt	42931616	5031713056614	50,000 pages	489 x 459 x 199
Pro7411WT	Fuser Unit	44289103	5031713045816	30,000	378 x 160 x 256
Pro9420WT	Fuser Unit	42931723	5031713056607	50,000	517 x 217 x 141

NB Toner yields based on 5% coverage • Drum yields based on 3 pages per job A4 • *Yield compliant with ISO/IEC 19798

Pro Series

Pro Series printers

Printer model	Consumable	Order code	Unitary EAN code	Life (pages)	Gross dimensions (mm) w x d x h
Pro9431/Pro9541/Pro9542	Black Toner	45536556	5031713066040	51,000	536 x 114 x 111
Pro9431/Pro9541/Pro9542	Cyan Toner	45536555	5031713066033	42,000	536 x 114 x 111
Pro9431/Pro9541/Pro9542	Magenta Toner	45536554	5031713066026	42,000	536 x 114 x 111
Pro9431/Pro9541	Yellow Toner	45536553	5031713066019	42,000	536 x 114 x 111
Pro9542	Yellow Toner	45536437	5031713065227	24,000 pages A4	536 x 114 x 111
Pro9541	White Toner	45536425	5031713061700	10,000*	524 x 92 x 116
Pro9542	White Toner	45536543	5031713065012	15,000*	524 x 113 x 116
Pro9541	Clear Toner	45536428	5031713061731	20,000*	524 x 92 x 116
Pro9431/Pro9541/Pro9542	Black Image Drum	45103722	5031713061267	40,000	581 x 182 x 182
Pro9431/Pro9541/Pro9542	Cyan Image Drum	45103721	5031713061250	40,000	581 x 182 x 182
Pro9431/Pro9541/Pro9542	Magenta Image Drum	45103720	5031713061243	40,000	581 x 182 x 182
Pro9431/Pro9541/Pro9542	Yellow Image Drum	45103719	5031713061236	40,000	581 x 182 x 182
Pro9541	White Image Drum	45103723	5031713061274	20,000	581 x 182 x 182
Pro9542	White Image Drum	45103765	5031713065456	20,000	581 x 182 x 182
Pro9541	Clear Image Drum	45103724	5031713061281	20,000	581 x 182 x 182
Pro9542	Transfer Belt	45531223	5031713065586	150,000 pages	710 x 582 x 280
Pro9431/Pro9541	Transfer Belt	45531213	5031713061014	150,000 pages	710 x 582 x 280
Pro9431/Pro9541/Pro9542	Fuser Unit	45531113	5031713061007	150,000 (A4 LEF)	551 x 225 x 200
Pro9431/Pro9541/Pro9542	Waste Toner System	45531503	5031713061045	40,000	522 x 182 x 119

NB Toner yields based on ISO/IEC 19798 • Drum yields based on 3 pages per job A4 • *Based on 5% coverage



Pro9541



Pro9542

Pro Series

Pro Series printers

Printer model	Consumable	Order code	Unitary EAN code	Life (pages)	Gross dimensions (mm) w x d x h
Pro8432WT	Yellow Toner	46606505	5031713070573	10.000	415 x 138 x 66
Pro8432WT	Magenta Toner	46606506	5031713070580	10.000	415 x 138 x 66
Pro8432WT	Cyan Toner	46606507	5031713070597	10.000	415 x 138 x 66
Pro8432WT	White Toner	46606508	5031713070603	4.500	415 x 138 x 66
Pro8432WT	Yellow Image Drum	44844417	5031713054092	30.000	475 x 251 x 195
Pro8432WT	Magenta Image Drum	44844418	5031713054108	30.000	475 x 251 x 195
Pro8432WT	Cyan Image Drum	44844419	5031713054115	30.000	475 x 251 x 195
Pro8432WT	White Image Drum	45878117	5031713070566	9.000	475 x 251 x 195
Pro8432WT	Fuser unit	44848814	5031713070542	50.000	488 x 224 x 165
Pro8432WT	Transfer Belt	44846204	5031713053590	80.000	512 x 450 x 226
Pro9431/9541/9542	Envelope Fuser Unit	45531153	5031713070788	15.0000	551 x 225 x 200

NB Toner yields based on ISO/IEC 19798 • Drum yields based on 3 pages per job A4 • *Based on 5% coverage

Business Printing Specialists

OKI is a global business-to-business brand dedicated to creating cost effective, professional in-house printing solutions which are designed to increase the efficiency of today's and tomorrow's businesses and their workflows. As pioneers in innovative print technologies from digital LED to High Definition Colour, we have a portfolio of award winning products and solutions enabling businesses to achieve both image focused, vibrant, quality print communications and budget flexibility.

OKI presents a full range of A3 and A4 colour and mono printers and MFPs, for workgroups and businesses of all sizes with superior media-handling capabilities. In addition our fax, POS and dot matrix printers complete our range of print solutions. These best in class products are designed to be easy to use making the job of in-house print easier.



Considering the Environment

OKI is committed to its role as a responsible partner for all its stakeholders:

Shareholders, business partners, end-users, local communities and employees.

As part of the OKI Group's Charter of Corporate Conduct, OKI continually reviews its efforts to provide environmentally sound solutions to its customers:

- OKI products are designed and manufactured with reducing the impact on the environment in mind.
- Increasing the amount of our hardware products and consumables that are recycled is one of our strategic objectives.
- We feel responsible for conducting our business in an environmentally sound manner, contributing to conservation and activities within our local communities.

OKI's Green Leaf symbol, found on all products and packaging, represents our total commitment to collection, recycling and environmental processes.



High Definition Colour

High Definition Colour is OKI's own unique collection of market-defining hardware and software technologies. Together, these

components deliver unsurpassed colour printing – simply, intelligently, perfectly.

We pioneered Single-pass Flat Paper Path technology to bring you fast affordable colour printing. In consumables, we created a special Microfine High Definition Toner to ensure your documents are printed in superior quality.

We championed digital LED printing technology: our High Definition LED printheads have no moving parts and deliver pin sharp images.

The combination of the range of media and software solutions we offer means you have much more control of what you want to print, when you want to print – without leaving the office.

ISO Sets the Standard

The range of Original Consumables carrying the ISO Standard continues to grow. ISO/IEC 19752 now incorporates the majority of our mono printers and fax machines. In addition, we continue to expand on this by introducing the ISO/IEC 19798 standards for our latest colour printers. These ISO Standards are the industry-recognised benchmark for measuring toner yields of consumables.



20 years of LED Technology

OKI pioneered the development of digital LED technology in printers over 20 years ago. This innovation delivers High Definition printing – for more accurate, striking printed documents. Thanks to this digital LED technology, our printers are compact, environmentally friendly and energy efficient, using significantly less raw materials in the manufacturing process and consuming less energy. LED print heads have no moving parts, making our LED printers robust and ultra reliable.

OKI EUROPE LTD.

EMEA Head Office

Blays House, Wick Road
Egham TW20 0HJ

United Kingdom

T +44(0) 20 8219 2190

F +44(0) 20 8219 2199

WWW.OKI.COM/EU