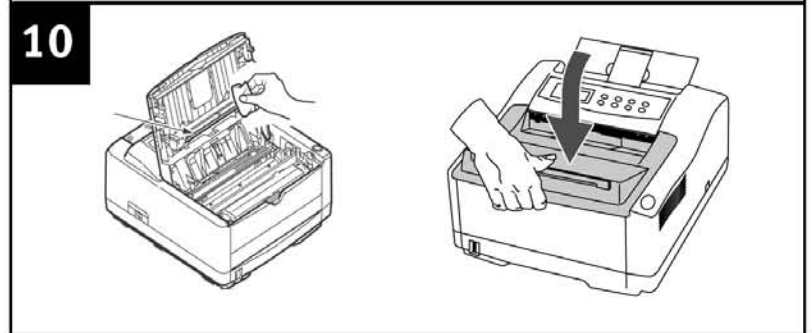
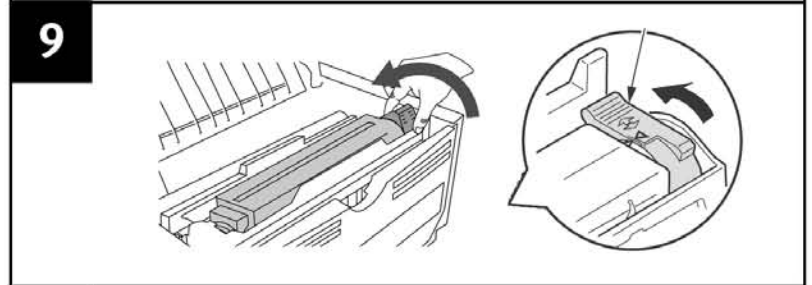
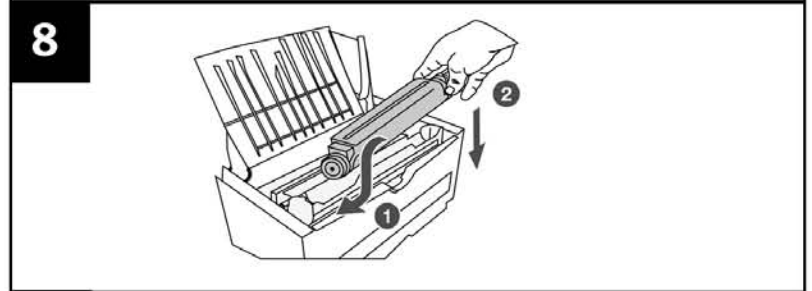
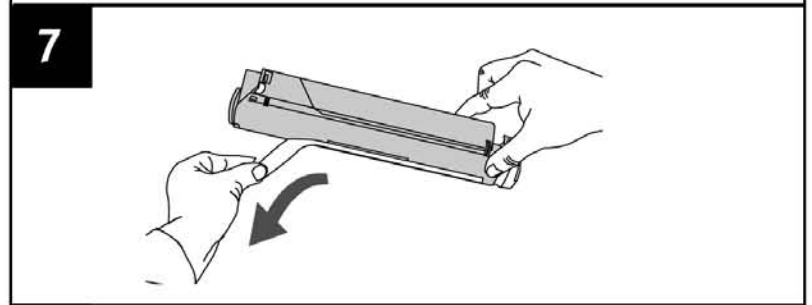
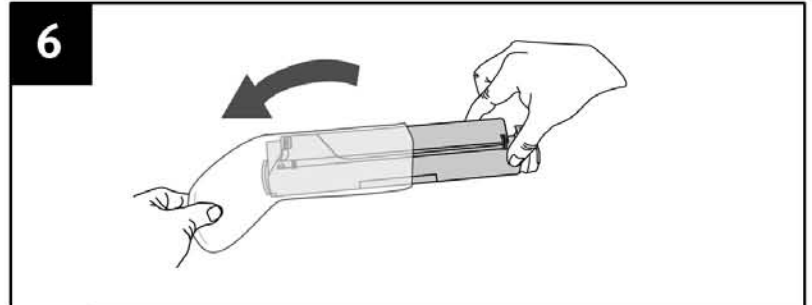
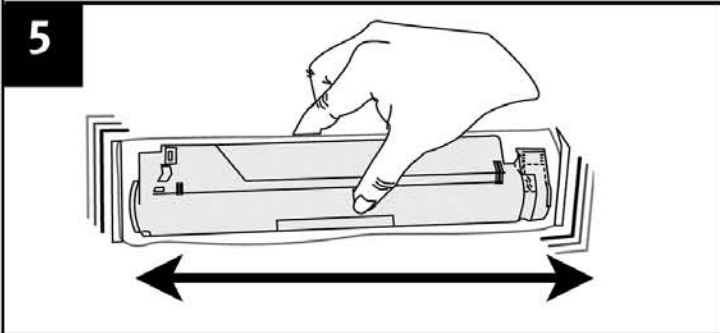
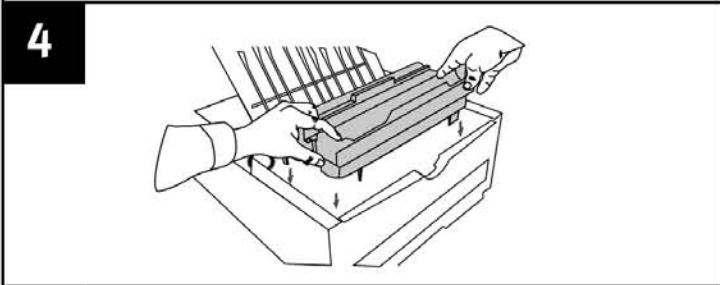
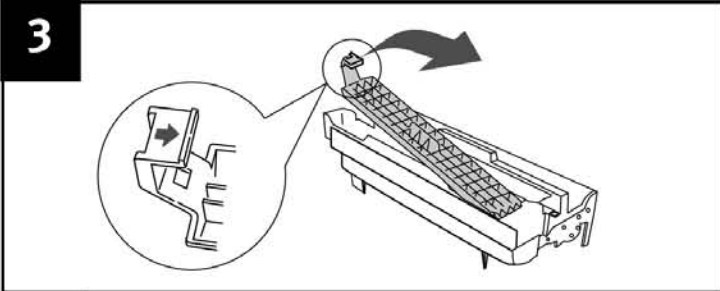
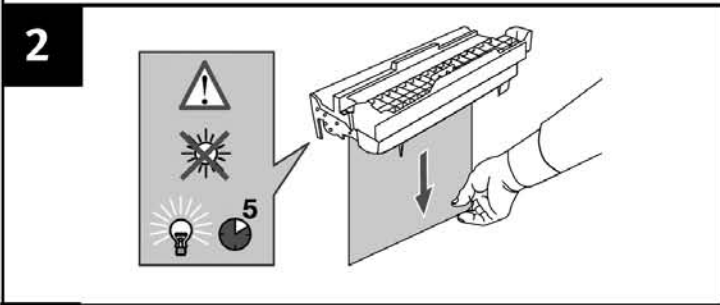
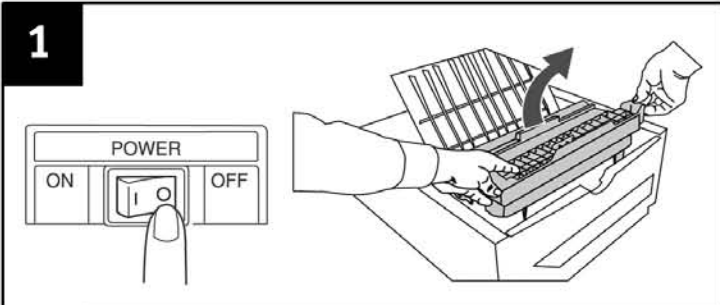


B4000 Series-Drum Replacement



58381601

43564401EE





RESET DRUM COUNTER

1. Open the Status Monitor.
2. Click Printer Setup>Open Configuration>Maintenance.
3. Click Drum Counter Reset. Click Apply.
4. Click OK.

RÉINIALISER COMPTEUR TAMBOUR

1. Ouvrez le Status Monitor (contrôleur d'état).
2. Cliquez Printer Setup>Open Configuration>Maintenance.
3. Cliquez Drum Counter Reset (Réinitialiser Compteur Tambour). Cliquez Apply (appliquer).
4. Cliquez OK.

CERO EL CONTADOR DEL CILINDRO

1. Abra Status Monitor.
2. Clic en Printer Setup>Open Configuration>Maintenance.
3. Clic en Drum Counter Reset (Cero El Contado Del Cilindro). Clic Apply (Aplicar).
4. Clic OK.

REINICIAR O CONTADOR DO CILINDRO

1. Lance o Status Monitor (estado da Impressora).
2. Clique com Printer Setup>Open Configuration>Maintenance.
3. Clique com Drum Counter Reset (Reiniciar o contador do cilindro). Clique Apply (Aplicar).
4. Clique OK.



RESET DRUM COUNTER

1. Press Online.
2. Press Menu repeatedly until MAINTENANCE MENU displays. Press Select.
3. Press Item+ until DRUM CNT RESET displays.
4. Press Select.

RÉINIALISER COMPTEUR TAMBOUR

1. Appuyez sur le bouton Online.
2. Appuyez sur le bouton Menu jusqu'à ce que MAINTENANCE MENU s'affiche. Appuyez Select.
3. Appuyez sur le Item+ jusqu'à ce que DRUM CNT RESET s'affiche.
4. Appuyez Select.

CERO EL CONTADOR DEL CILINDRO

1. Presionar Online.
2. Presionar Menu varias veces hasta que aparezca el MAINTENANCE MENU. Presionar Select.
3. Presionar Item hasta que aparezca DRUM CNT RESET.
4. Presionar Select.

REINICIAR O CONTADOR DO CILINDRO

1. Pressione Online.
2. Pressione a tecla Menu repetidamente até que MAINTENANCE MENU apareça. Pressione Select.
3. Pressione até que DRUM CNT RESET apareça.
4. Pressione Select.