

**LD630/LD640**

# **Windows Driver Manual Technical Reference**

# ■ Table of Contents

<b>1. Manual Information.....</b>	<b>3</b>
<b>2. Operating System (OS) Environment.....</b>	<b>3</b>
<b>3. Windows Driver Preparation.....</b>	<b>3</b>
<b>4. Installing on Windows 2000/XP/Server 2003 .....</b>	<b>4</b>
4-1 Via Serial or Parallel port .....	4
4-2 Via USB port.....	7
4-3 Via Network port .....	9
<b>5. Installing Windows Vista/Server 2008/Server 2008R2/7/8/Server 2012 .....</b>	<b>12</b>
5-1 Via Serial or Parallel port .....	12
5-2 Via USB port.....	15
5-3 Via Network port .....	17
<b>6. Detailed Windows Driver Settings.....</b>	<b>20</b>
6-1 Printing Preferences .....	20
6-2 Adding new paper size.....	21
<b>7. Specifications.....</b>	<b>23</b>
7-1 Resolution.....	23
7-2 Paper Size .....	23

## **1. Manual Information**

This Windows Driver Installation Manual provides information on installation, detailed specifications, and usage of the printer's Windows Driver according to PC operating system (OS).

We at Oki Data maintain ongoing efforts to enhance and upgrade the functions and quality of all our products. In following, product specifications and/or user manual content may be changed without prior notice.

## **2. Operating System (OS) Environment**

The following operating systems are supported for usage.

- Microsoft Windows 2000 (32bit)
- Microsoft Windows XP (32bit/64bit)
- Microsoft Windows Server 2003 (32bit/64bit)
- Microsoft Windows Vista (32bit/64bit)
- Microsoft Windows Server 2008 (32bit/64bit)
- Microsoft Windows Server 2008R2 (64bit)
- Microsoft Windows 7 (32bit/64bit)
- Microsoft Windows 8 (32bit/64bit)
- Microsoft Windows 2012 (64bit)

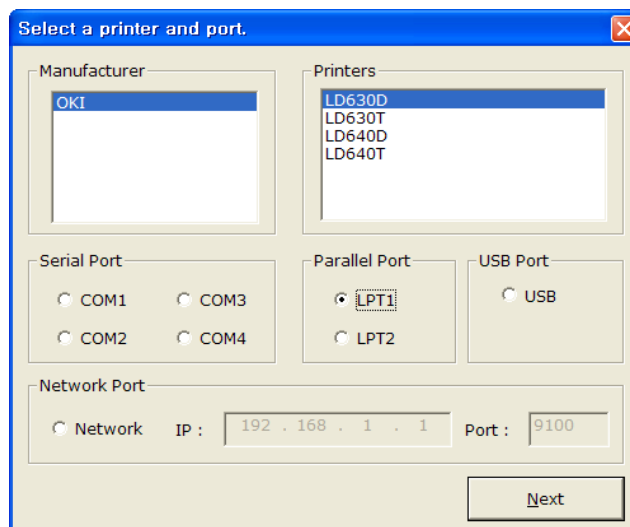
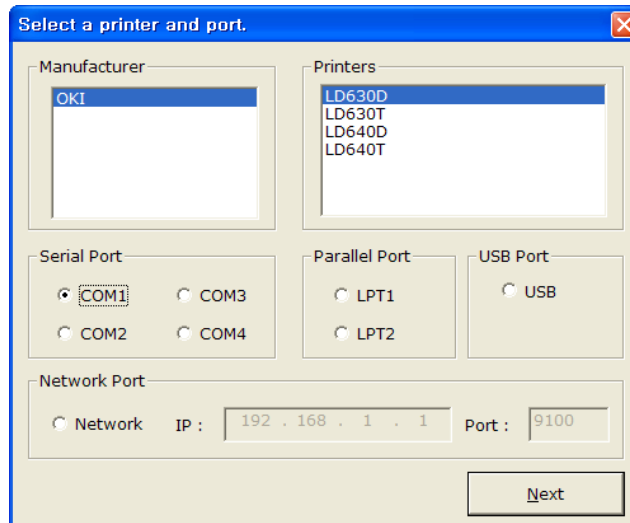
## **3. Windows Driver Preparation**

The Windows Driver is included in the enclosed CD.

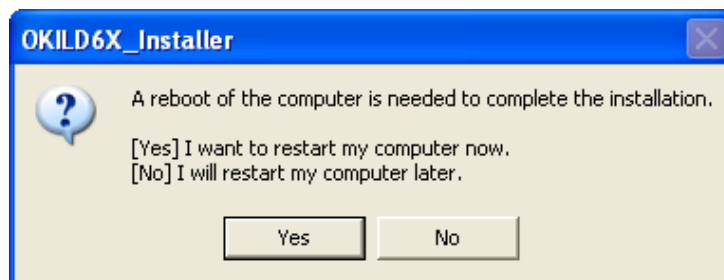
## **4. Installing on Windows 2000/XP/Server 2003**

### **4-1 Via Serial or Parallel port**

- 1) Double-click the Windows Driver installation file.
- 2) Select COM or LPT to be used and click the “Next” button.

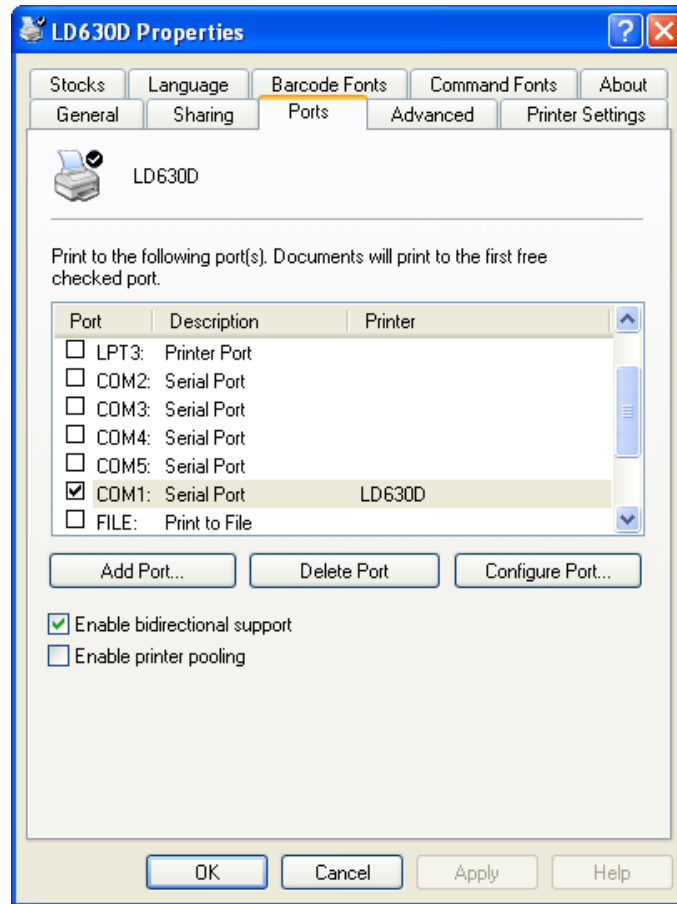


- 3) Clicking the “Yes” button will reboot the PC.

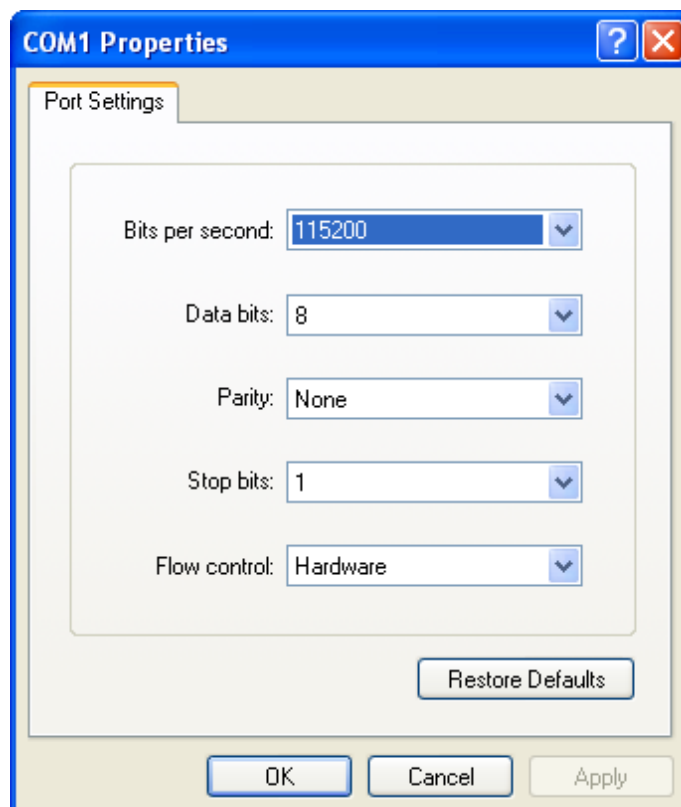


- 4) Open the printer properties window in the Windows OS.

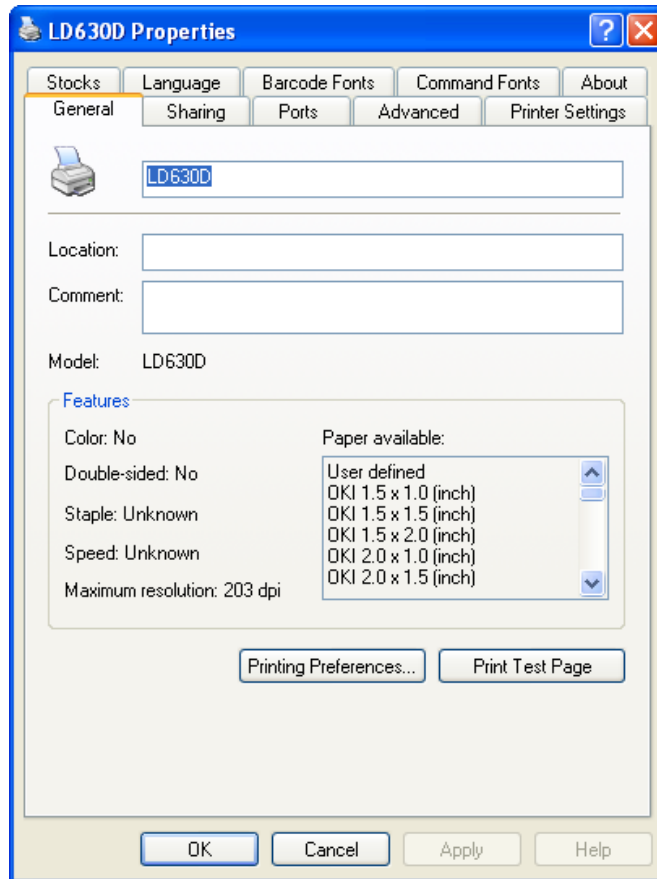
5) Click the “Configure Port” button in the “Ports” tab.



6) Match the communication settings to those of the printer.  
(The communication settings of the printer can be performed by conducting a self-test.)



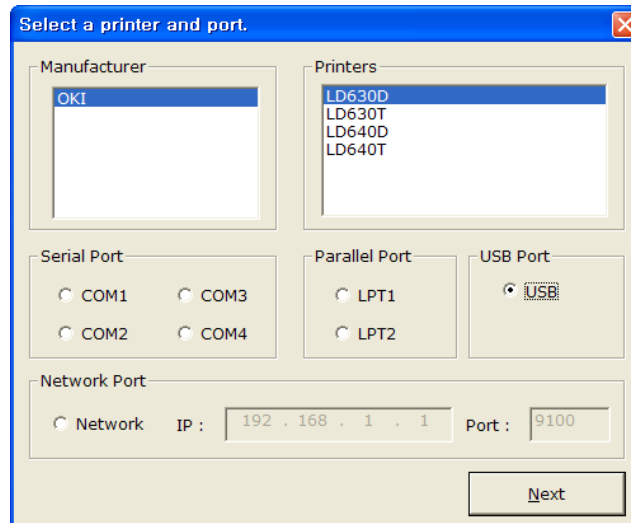
7) Click the “Print Test Page” button and check printing status.



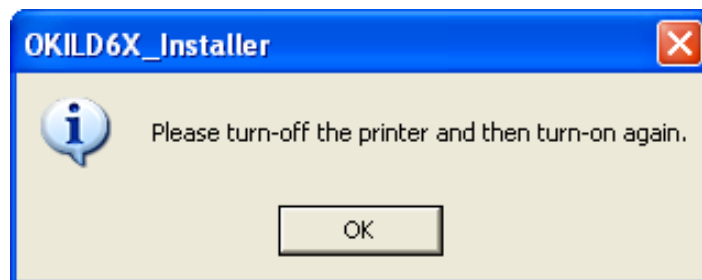
8) Proper installation of the driver is indicated if the test page is printed normally.

**4-2 Via USB port**

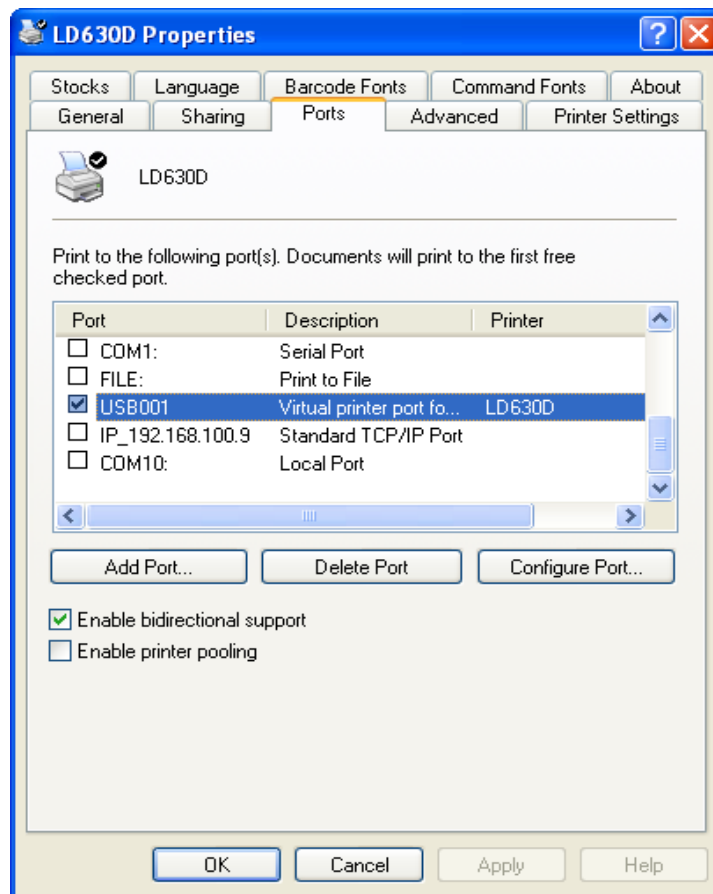
- 1) Double-click the Windows Driver installation file.
- 2) Select a printer model.
- 3) Select USB and click the “Next” button.



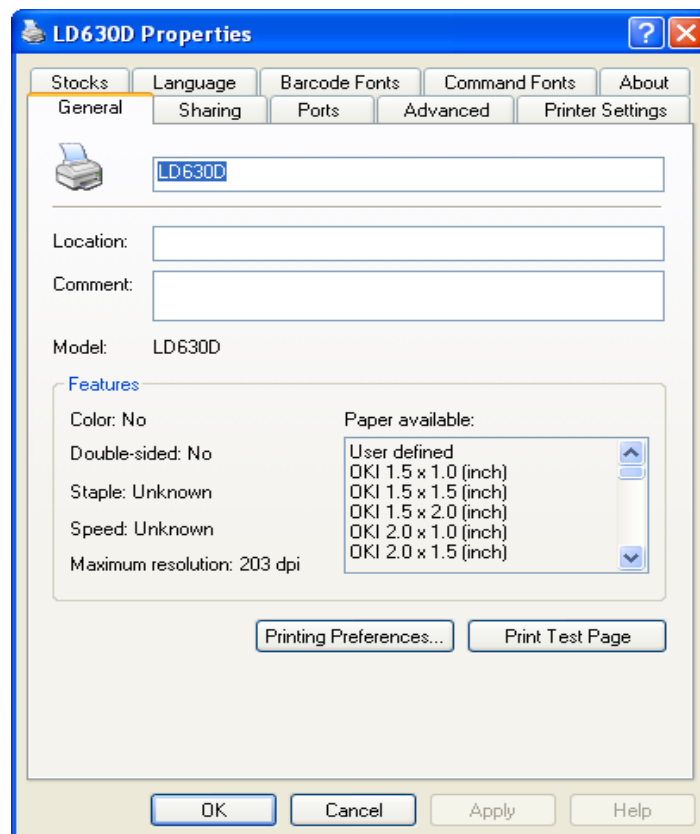
- 4) Click the “OK” button.



- 5) Turn off the printer and turn on again.
- 6) The USB Port setting can be confirmed in the Windows Driver properties.  
**\* When you use “USB” interface, if data-loss is happened, please uncheck “Enable bidirectional support” check-box.**



6) Click the “Print Test Page” button and check printing status.

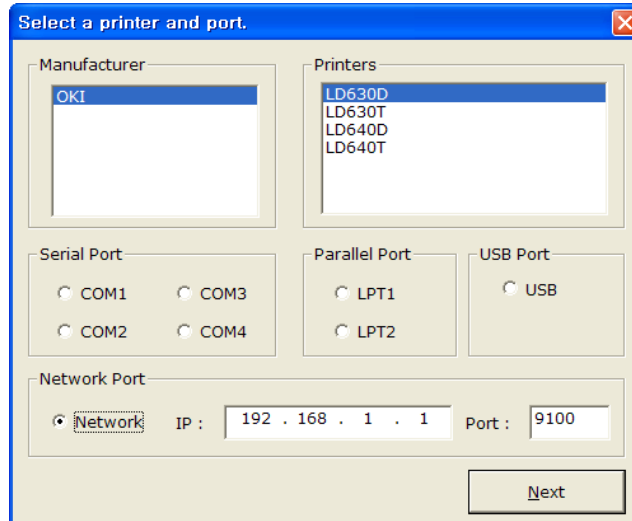


7) Proper installation of the driver is indicated if the test page is printed normally.

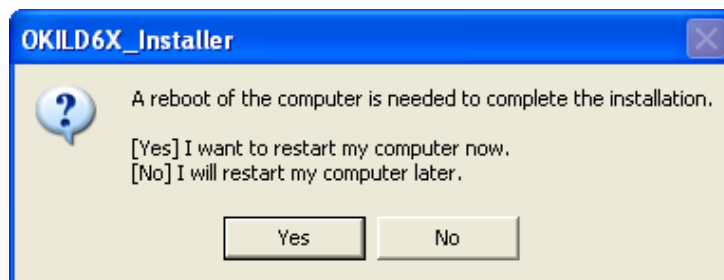


**4-3 Via Network port**

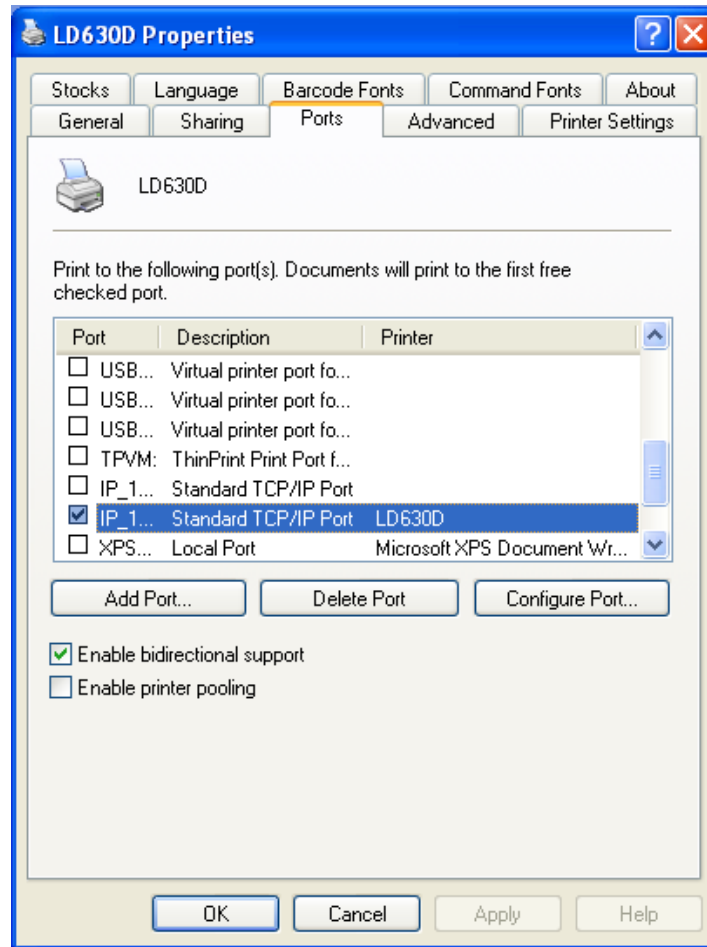
- 1) Double-click the Windows Driver installation file.
- 2) Select Network button
- 3) Type IP address and port number and then click “Next” button.



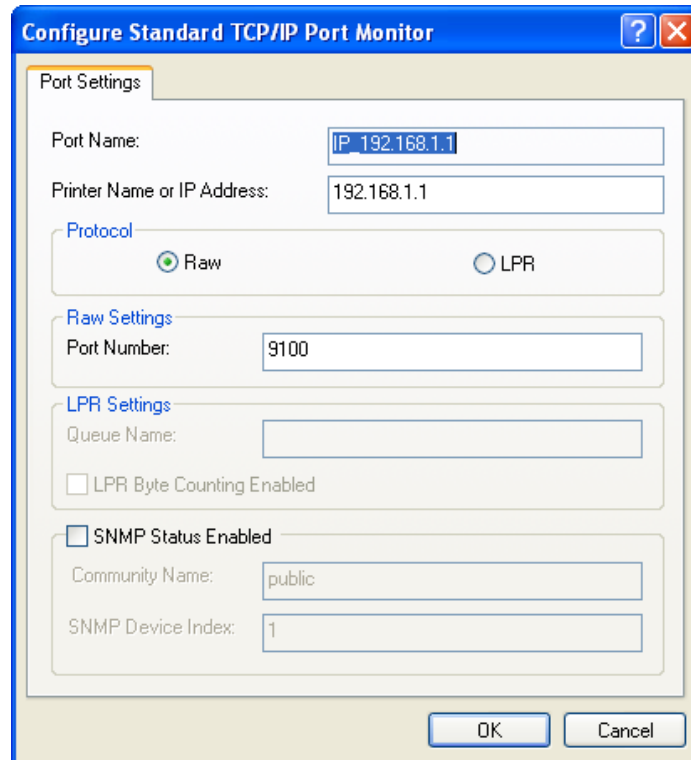
- 4) Clicking the “Yes” button will reboot the PC.



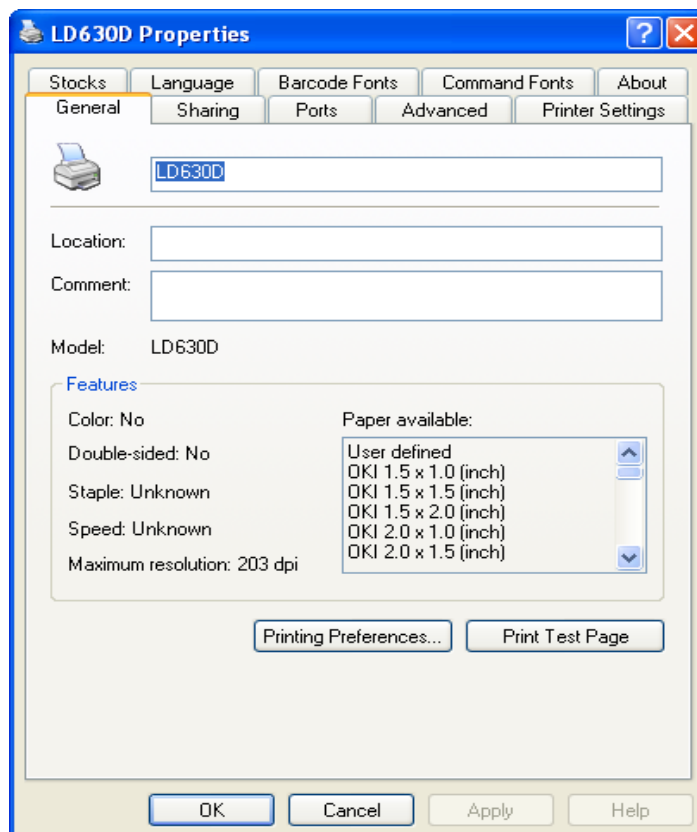
- 5) Open the printer properties window in the Windows OS.
- 6) Click the “Configure Port” button in the “Ports” tab.



7) Match the communication settings to those of the printer.



8) Click the “Print Test Page” button and check printing status.

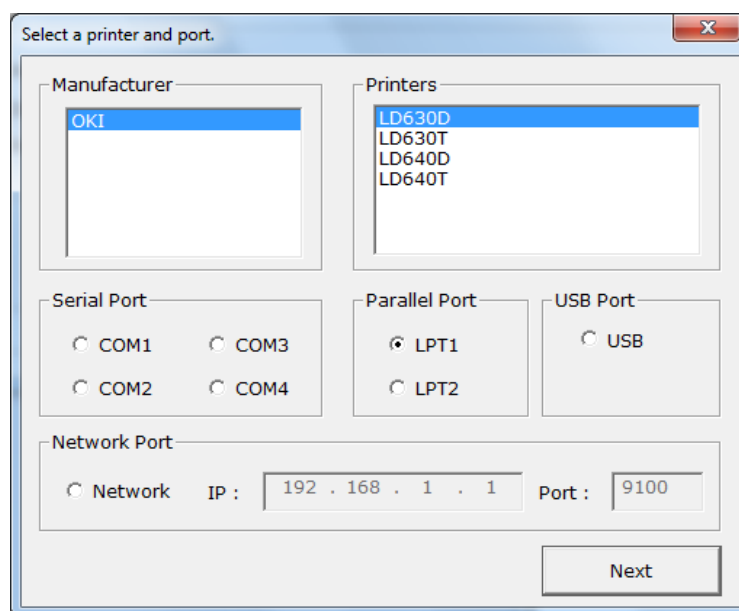
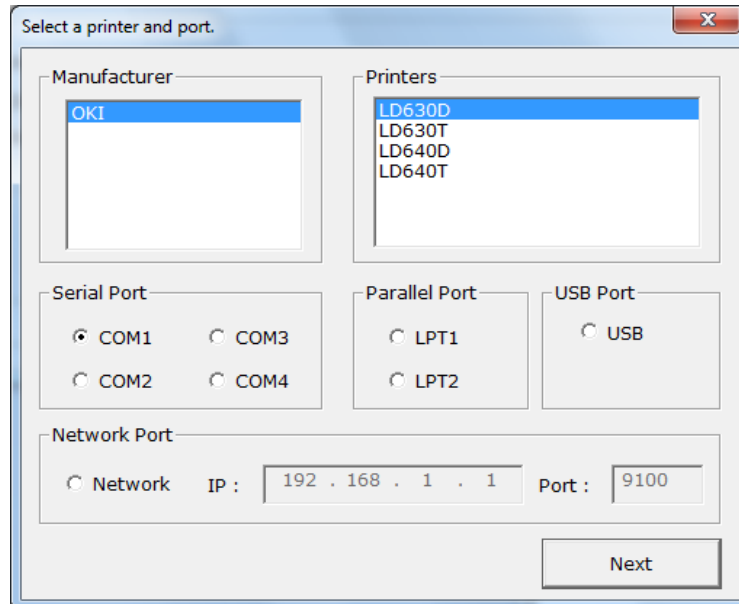


9) Proper installation of the driver is indicated if the test page is printed normally.

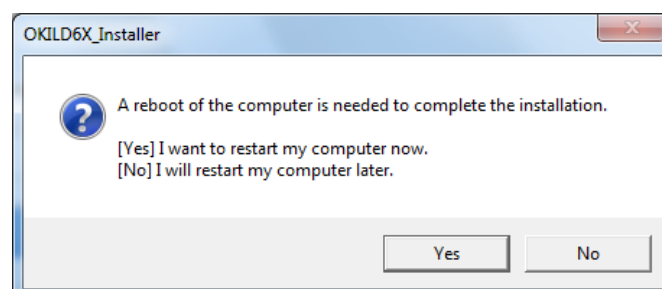
## **5. Installing Windows Vista/Server 2008/Server 2008R2/7/8/Server 2012**

### **5-1 Via Serial or Parallel port**

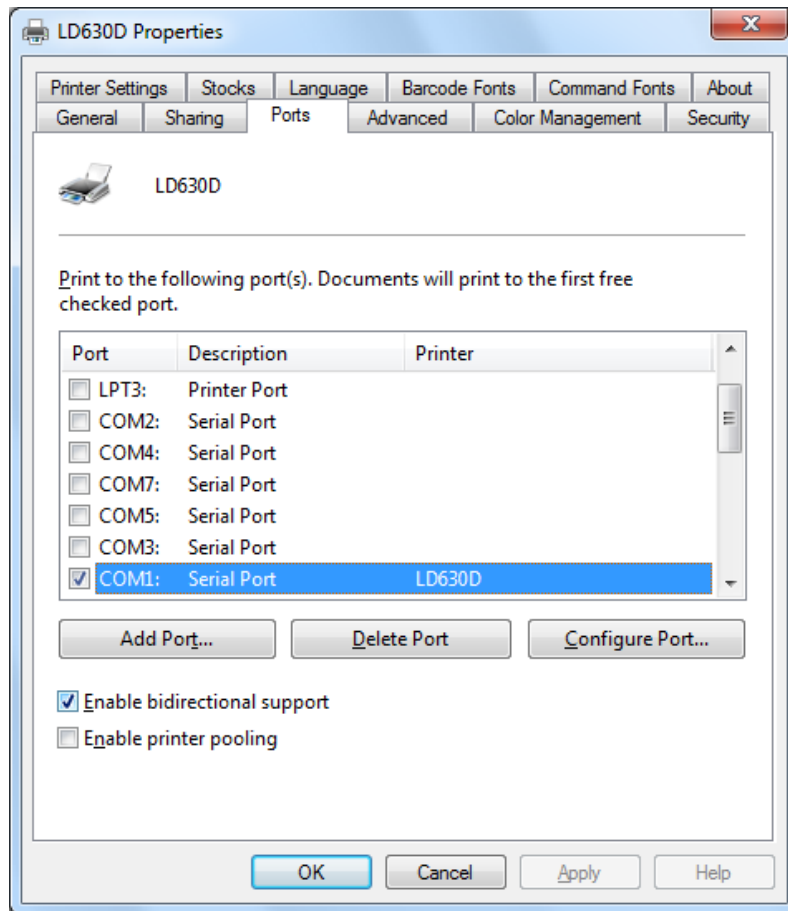
- 1) Double-click the Windows Driver installation file.
- 2) Select COM or LPT to be used and click the “Next” button.



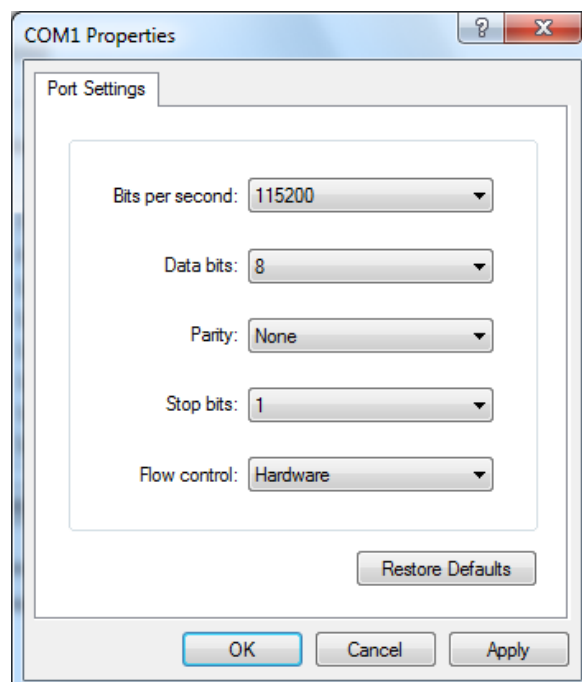
- 3) Clicking the “Yes” button will reboot the PC.



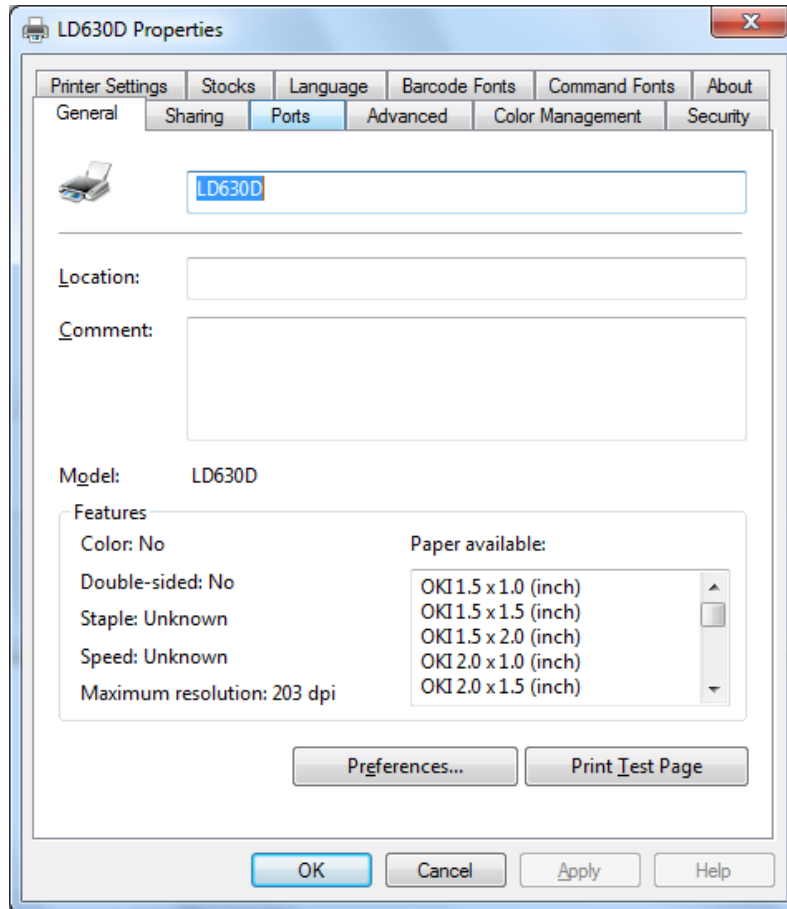
- 4) Open the printer properties window in the Windows OS.
- 5) Click the “Configure Port...” button in the “Ports” tab.



- 6) Match the communication settings to those of the printer.  
(The communication settings of the printer can be performed by conducting a self-test.)



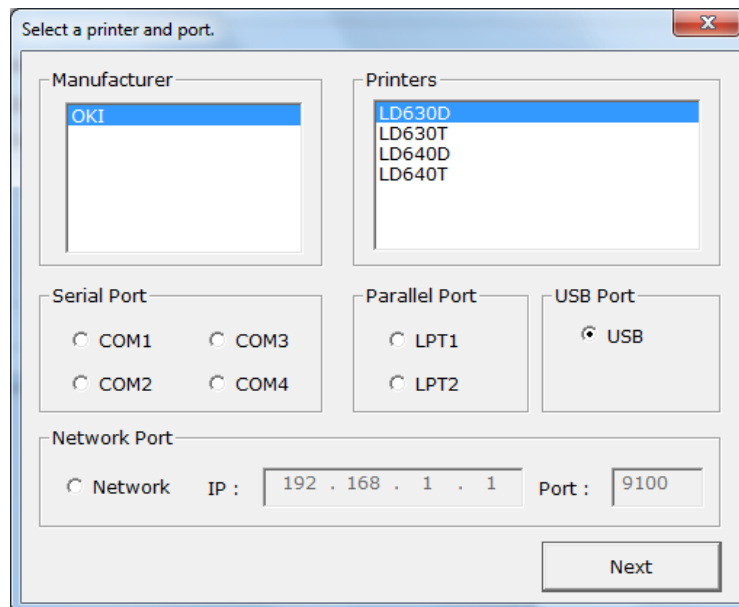
7) Click the “Print Test Page” button and check printing status.



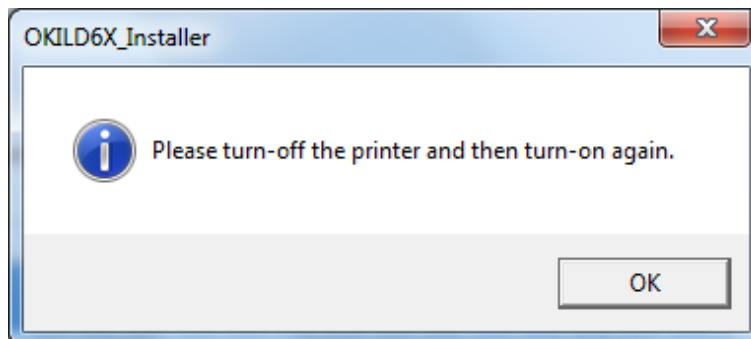
8) Proper installation of the driver is indicated if the test page is printed normally.

**5-2 Via USB port**

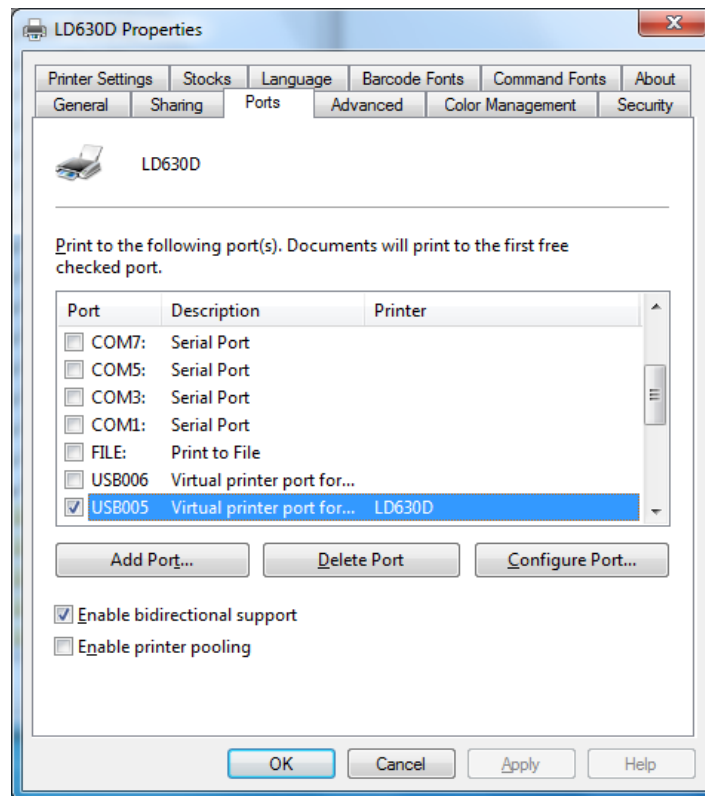
- 1) Double-click the Windows Driver installation file.
- 2) Select a printer model.
- 3) Select USB and click the “Next” button.



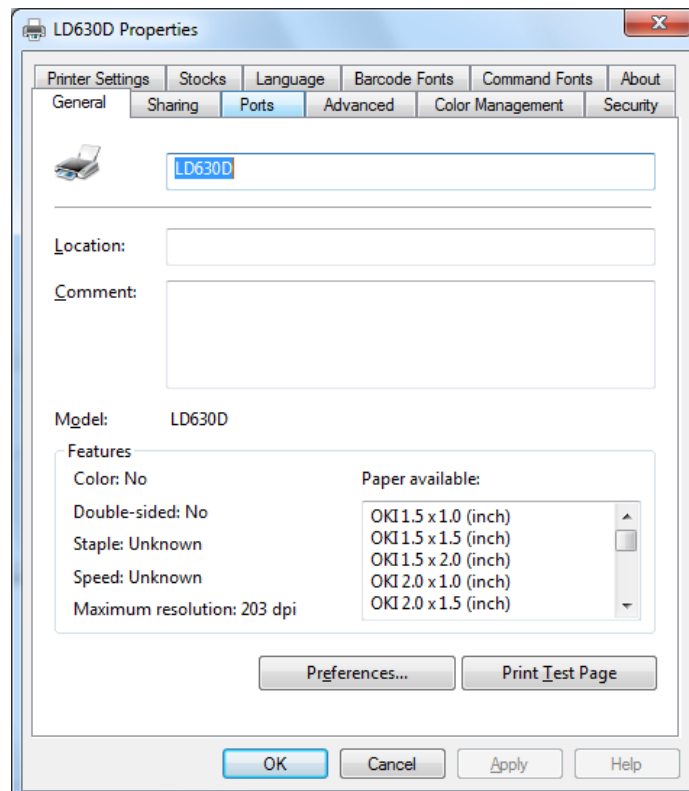
- 4) Click the “OK” button.



- 5) Turn off the printer and turn on again.
- 6) The USB Port setting can be confirmed in the Windows Driver properties.  
**\* When you use “USB” interface, if data-loss is happened, please uncheck “Enable bidirectional support” check-box.**



6) Click the “Print Test Page” button and check printing status.

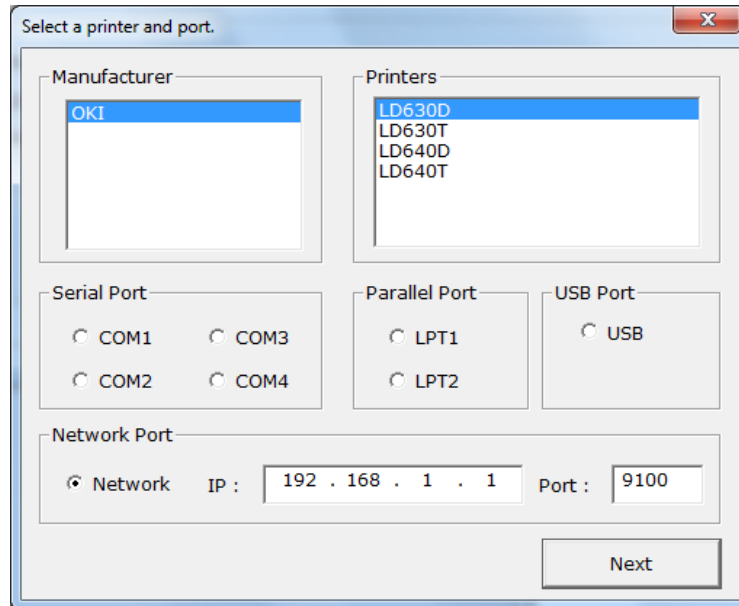


7) Proper installation of the driver is indicated if the test page is printed normally.

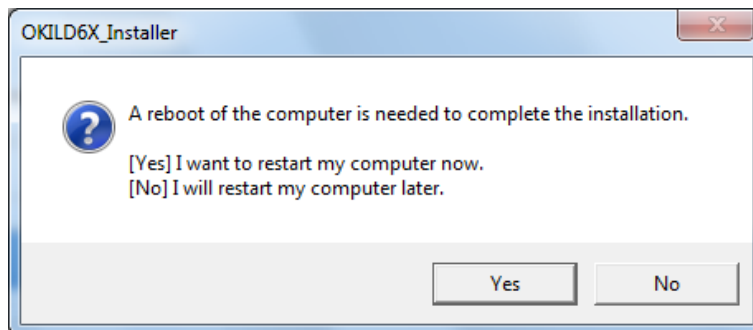


**5-3 Via Network port**

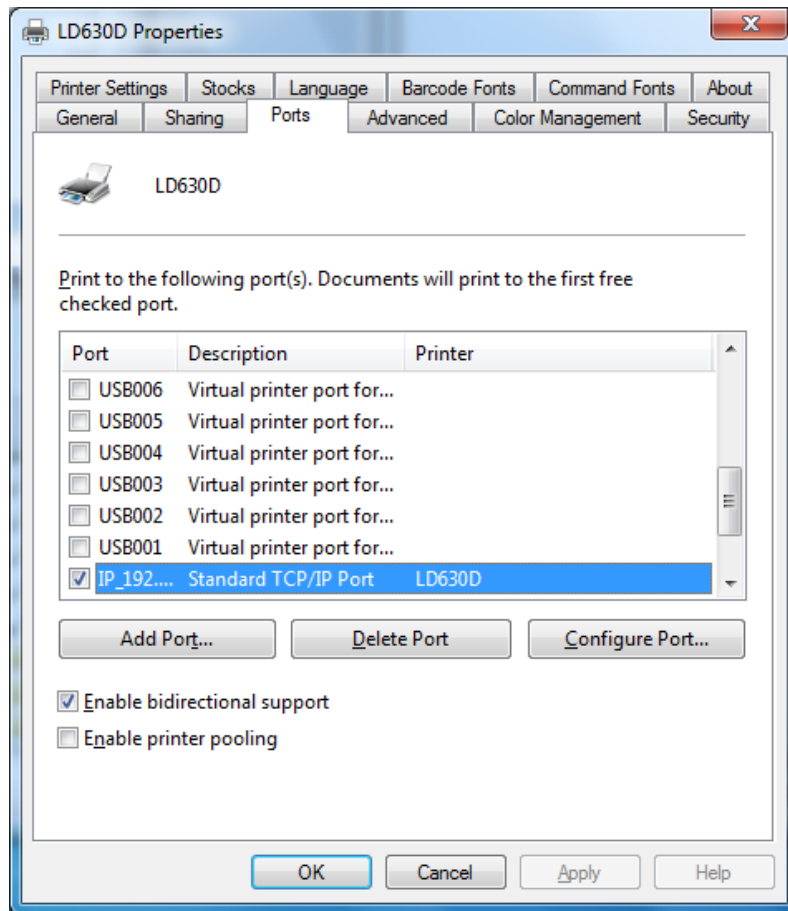
- 1) Double-click the Windows Driver installation file.
- 2) Select Network button
- 3) Type IP address and port number and then click “Next” button.



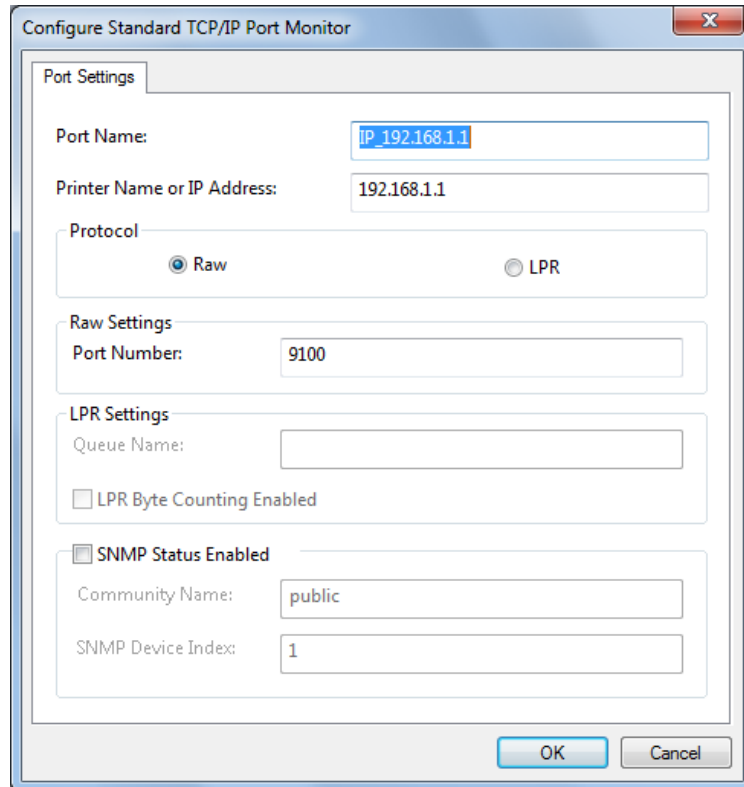
- 4) Clicking the “Yes” button will reboot the PC.



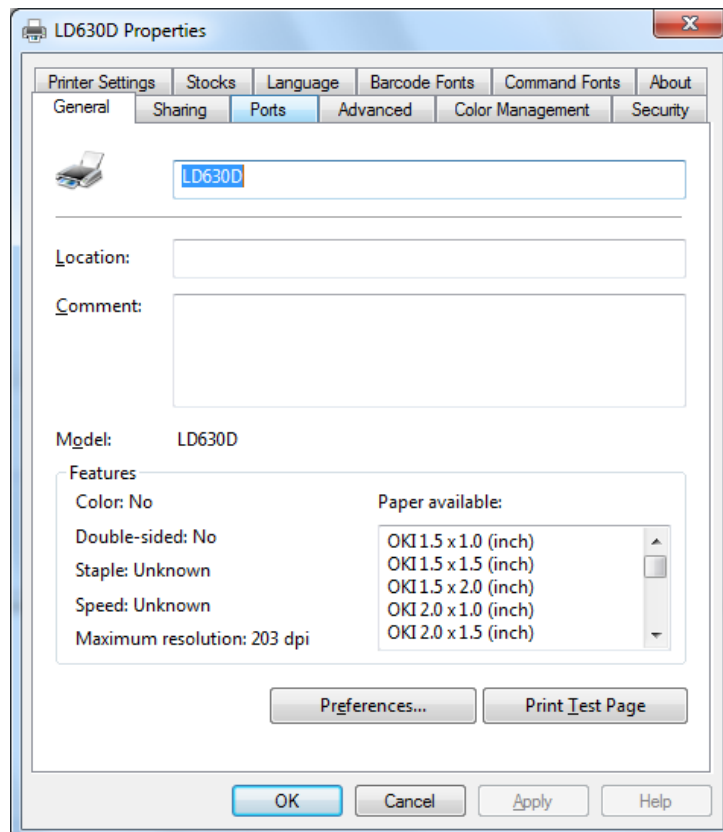
- 5) Open the printer properties window in the Windows OS.
- 6) Click the “Configure Port...” button in the “Ports” tab.



7) Match the communication settings to those of the printer.



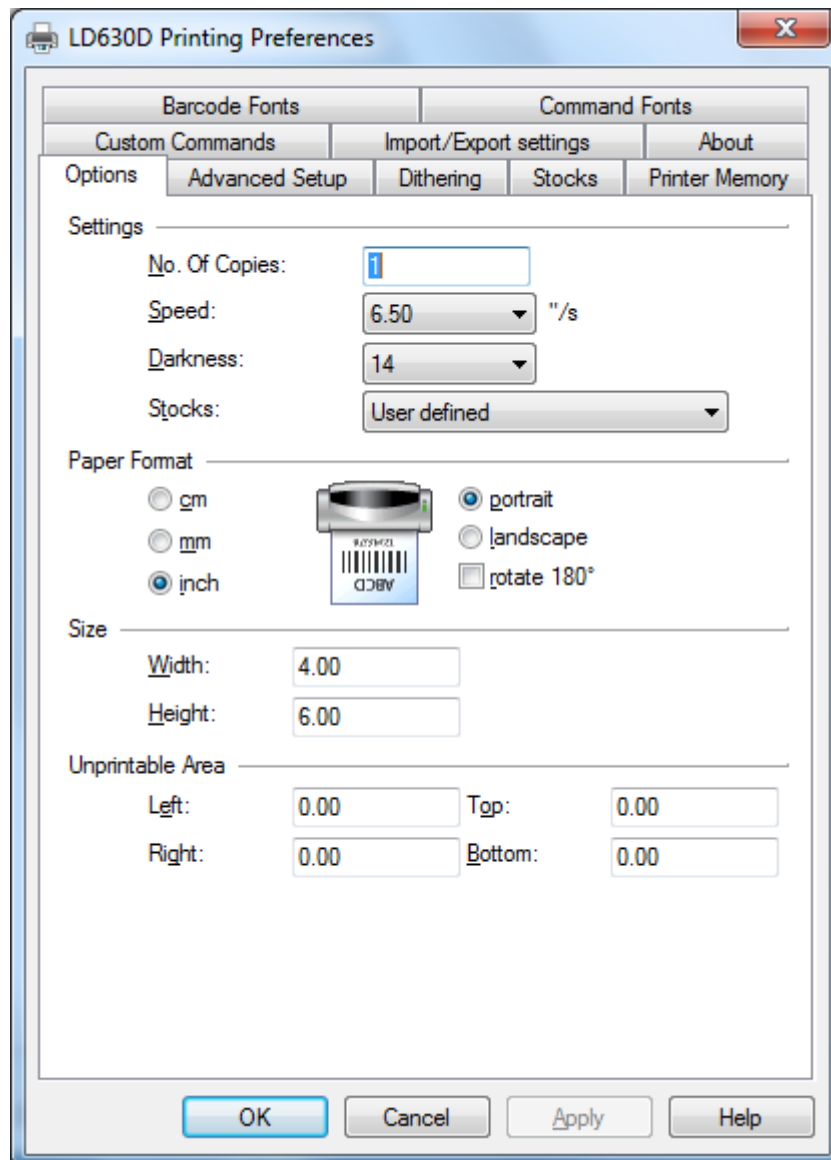
8) Click the “Print Test Page” button and check printing status.



9) Proper installation of the driver is indicated if the test page is printed normally.

## 6. Detailed Windows Driver Settings

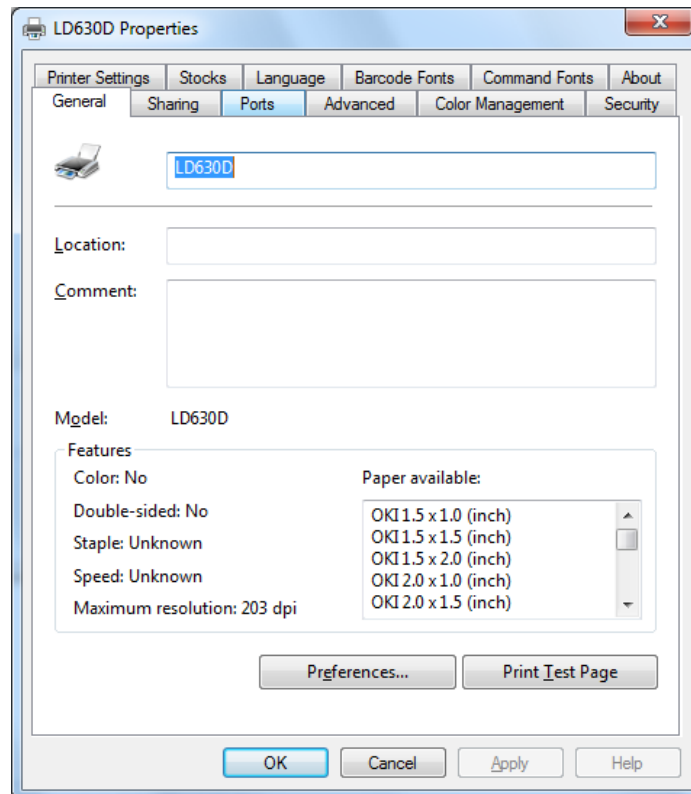
### 6-1 Printing Preferences



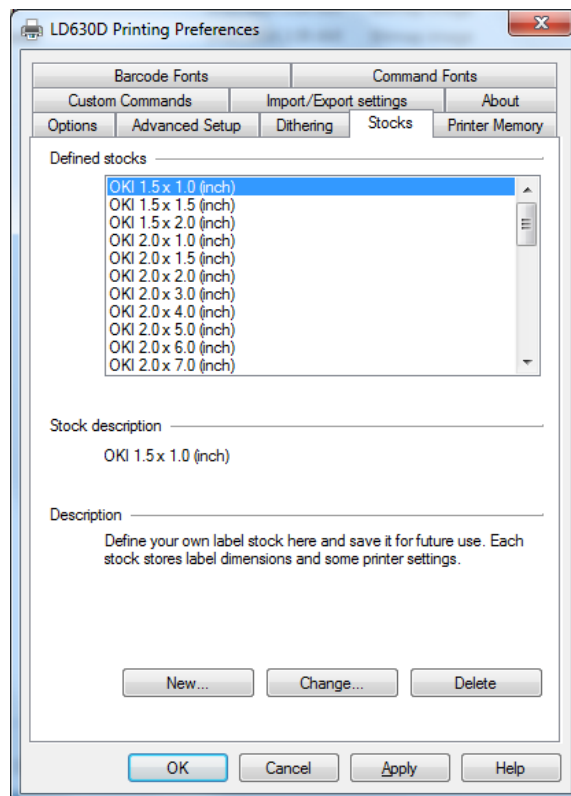
1	No.Of Copies	The number of copies.
2	Speed	Set the printing speed
3	Darkness	The darkness level of printouts.
4	Portrait	The printer prints in portrait orientation.
5	Landscape	The printer prints in landscape orientation.
6	Rotate 180	The option of rotation 180 degree.
7	Width	Set the width of the paper.
8	Height	Set the height of the paper.
9	Unprintable Area	Set the unprintable area.

**6-2 Adding new paper size**

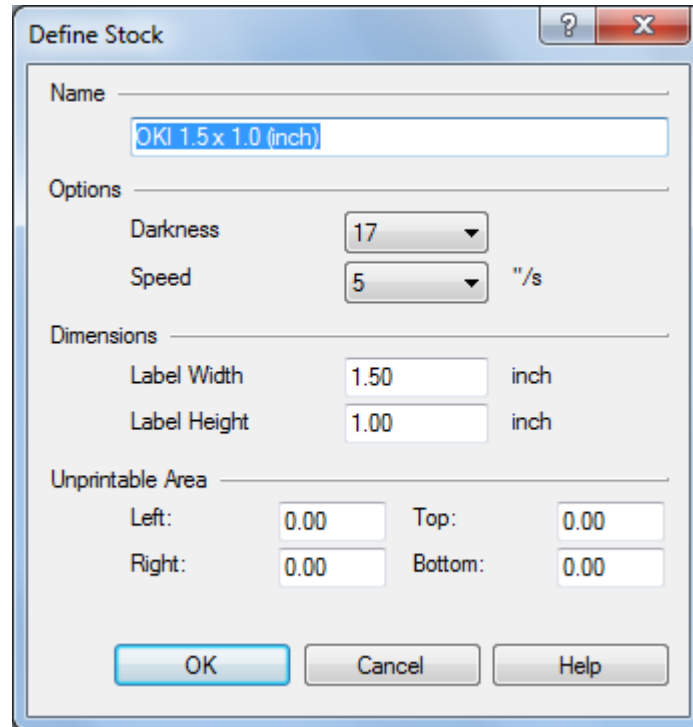
1) Click the “Preferences...” button.



2) Click the “New...” button.



3) Set a value you want and then click “OK” button.



## **7. Specifications**

### **7-1 Resolution**

LD630D: 203 × 203 dpi

LD630T: 203 × 203 dpi

LD640D: 300 × 300 dpi

LD640T: 300 × 300 dpi

### **7-2 Paper Size**

1.5 x 1.0 inch (3.81 x 2.54 cm)

1.5 x 1.5 inch (3.81 x 3.81 cm)

1.5 x 2.0 inch (3.81 x 5.08 cm)

2.0 x 1.0 inch (5.08 x 2.54 cm)

2.0 x 1.5 inch (5.08 x 3.81 cm)

2.0 x 2.0 inch (5.08 x 5.08 cm)

2.0 x 3.0 inch (5.08 x 7.62 cm)

2.0 x 4.0 inch (5.08 x 10.16 cm)

2.0 x 5.0 inch (5.08 x 12.7 cm)

2.0 x 6.0 inch (5.08 x 15.24 cm)

2.0 x 7.0 inch (5.08 x 17.78 cm)

2.0 x 8.0 inch (5.08 x 20.32 cm)

2.5 x 1.0 inch (5.08 x 5.08 cm)

2.5 x 1.5 inch (5.08 x 5.08 cm)

2.5 x 2.0 inch (5.08 x 5.08 cm)

3.0 x 1.0 inch (7.62 x 2.54 cm)

3.0 x 1.5 inch (7.62 x 3.81 cm)

3.0 x 2.0 inch (7.62 x 5.08 cm)

3.0 x 3.0 inch (7.62 x 7.62 cm)

3.0 x 4.0 inch (7.62 x 10.16 cm)

3.0 x 6.0 inch (7.62 x 15.24 cm)

3.5 x 1.0 inch (8.89 x 2.54 cm)

3.5 x 1.5 inch (8.89 x 3.81 cm)

3.5 x 2.0 inch (8.89 x 5.08 cm)

3.5 x 3.0 inch (8.89 x 7.62 cm)

3.5 x 4.0 inch (8.89 x 10.16 cm)

3.5 x 6.0 inch (8.89 x 15.24 cm)

4.0 x 1.0 inch (10.16 x 2.54 cm)

4.0 x 1.5 inch (10.16 x 3.81 cm)

4.0 x 2.0 inch (10.16 x 5.08 cm)

4.0 x 3.0 inch (10.16 x 7.62 cm)

4.0 x 4.0 inch (10.16 x 10.16 cm)

4.0 x 6.0 inch (10.16 x 15.24 cm)

4.0 x 8.0 inch (10.16 x 20.32 cm)

4.0 x 12.0 inch (10.16 x 30.48 cm)

# Oki contact details

## **OkicontactName. Oki Systems (UK) Limited**

550 Dundee Road  
Slough Trading Estate  
Slough  
Berkshire  
SL1 4LE

Tel:+44 (0) 1753 819819  
Fax:+44 (0) 1753 819899  
<http://www.oki.co.uk>

## **Oki Systems Ireland Limited**

The Square Industrial Complex  
Tallaght  
Dublin 24

Tel:+353 (0) 1 4049590  
Fax:+353 (0)1 4049591  
<http://www.oki.ie>

## **Oki Systems Ireland Limited - Northern Ireland**

19 Ferndale Avenue  
Glengormley  
BT36 5AL  
Northern Ireland

Tel:+44 (0) 7767 271447  
Fax:+44 (0) 1 404 9520  
<http://www.oki.ie>

Technical Support for all Ireland:

Tel:+353 1 4049570  
Fax:+353 1 4049555  
E-mail: [tech.support@oki.ie](mailto:tech.support@oki.ie)

## **Oki Systems (Czech and Slovak), s.r.o.**

IBC – Pobřežní 3  
186 00 Praha 8  
Czech Republic

Tel: +420 224 890158  
Fax:+420 22 232 6621  
Website: [www.oki.cz](http://www.oki.cz), [www.oki.sk](http://www.oki.sk)

## **Oki Systems (Deutschland) GmbH**

Hansaallee 187  
40549 Düsseldorf

Tel: 01805/6544357\*\*  
01805/OKIHELP\*\*  
Fax: +49 (0) 211 59 33 45  
Website:  
[www.okiprintingsolutions.de](http://www.okiprintingsolutions.de)  
[info@oki.de](mailto:info@oki.de)

\*\*0,14€/Minute aus dem dt. Festnetz  
der T-Com (Stand 11.2008)

## **Διανομέας των συστημάτων OKI**

CPI S.A1 Rafailidou str.  
177 78 Tavros  
Athens  
Greece

Tel: +30 210 48 05 800  
Fax:+30 210 48 05 801  
EMail:[sales@cpi.gr](mailto:sales@cpi.gr)

## **Oki Systems (Iberica), S.A.U**

C/Teide, 3  
San Sebastian de los Reyes  
28703, Madrid

Tel:+34 91 3431620  
Fax: +34 91-3431624  
Atención al cliente: 902 36 00 36  
Website: [www.oki.es](http://www.oki.es)

## **Oki Systèmes (France) S.A.**

44-50 Av. du Général de Gaulle  
94246 L'Hay les Roses  
Paris

Tel:+33 01 46 15 80 00  
Télécopie:+33 01 46 15 80 60  
Website: [www.oki.fr](http://www.oki.fr)

## **OKI Systems (Magyarország) Kft.**

Capital Square  
Tower 2  
7th Floor  
H-1133 Budapest,  
Váci út 76  
Hungary

Telefon: +36 1 814 8000  
Telefax: +36 1 814 8009  
Website: [www.oki.hu](http://www.oki.hu)

## **OKI Systems (Italia) S.p.A.**

via Milano, 11,  
20084 Lacchiarella (MI)

Tel:+39 (0) 2 900261  
Fax:+39 (0) 2 90026344  
Website: [www.oki.it](http://www.oki.it)

## **OKI Printing Solutions**

Platinum Business Park II, 3rd Floor  
ul. Domaniewska 42  
02-672 Warsaw  
Poland

Tel:+48 22 448 65 00  
Fax:+48 22 448 65 01  
Website: [www.oki.com.pl](http://www.oki.com.pl)  
E-mail: [oki@oki.com.pl](mailto:oki@oki.com.pl)  
Hotline: 0800 120066  
E-mail: [tech@oki.com.pl](mailto:tech@oki.com.pl)

## **Oki Systems (Ibérica) S.A.**

Sucursal Portugal  
Edifício Prime -  
Av. Quinta Grande 53  
7º C Alfragide  
2614-521 Amadora  
Portugal

Tel:+351 21 470 4200  
Fax:+351 21 470 4201  
Website:[www.oki.pt](http://www.oki.pt)  
E-mail : [oki@oki.pt](mailto:oki@oki.pt)

## **Oki Service**

### **Serviço de apoio técnico ao Cliente**

Tel: 808 200 197  
E-mail : [okiserv@oki.pt](mailto:okiserv@oki.pt)

## **OKI Europe Ltd. (Russia)**

Office 702, Bldg 1  
Zagorodnoye shosse  
117152, Moscow

Tel: +74 095 258 6065  
Fax: +74 095 258 6070  
e-mail: [info@oki.ru](mailto:info@oki.ru)  
Website: [www.oki.ru](http://www.oki.ru)

Technical support:

Tel: +7 495 564 8421  
e-mail: [tech@oki.ru](mailto:tech@oki.ru)

## **Oki Systems (Österreich)**

Campus 21  
Businesszentrum Wien Sued  
Liebermannstrasse A02 603  
22345 Brun am Gebirge

Tel: +43 223 6677 110  
Drucker Support:  
+43 (0) 2236 677110-501  
Fax Support:  
+43 (0) 2236 677110-502  
Website: [www.oki.at](http://www.oki.at)

## **OKI Europe Ltd. (Ukraine)**

Raisy Opkinoy Street,8  
Building B, 2<sup>nd</sup> Floor,  
Kiev 02002  
Ukraine

Tel: +380 44 537 5288  
e-mail: [info@oki.ua](mailto:info@oki.ua)  
Website: [www.oki.ua](http://www.oki.ua)

## **OKI Sistem ve Yazıcı Çözümleri Tic. Ltd. Şti.**

Harman sok Duran Is Merkezi,  
No:4, Kat:6,  
34394, Levent  
İstanbul

Tel: +90 212 279 2393  
Faks: +90 212 279 2366  
Web: [www.oki.com.tr](http://www.oki.com.tr)  
[www.okiprintingsolutions.com.tr](http://www.okiprintingsolutions.com.tr)

## **Oki Systems (Belgium)**

Medialaan 24  
1800 Vilvoorde

Helpdesk: 02-2574620  
Fax: 02 2531848  
Website: [www.oki.be](http://www.oki.be)

## **AlphaLink Bulgaria Ltd.**

2 Kukush Str.  
Building "Antim Tower", fl. 6  
1463 Sofia, Bulgaria

tel: +359 2 821 1160  
fax: +359 2 821 1193  
Website: <http://bulgaria.oki.com>



**OKI Printing Solutions**

Herstedøstervej 27  
2620 Albertslund  
Danmark

Adm.: +45 43 66 65 00  
Hotline: +45 43 66 65 40  
Salg: +45 43 66 65 30  
Fax: +45 43 66 65 90  
Website: www.oki.dk

**Oki Systems (Finland) Oy**

Polaris Capella  
Vänrikinkuja 3  
02600 Espoo

Tel: +358 (0) 207 900 800  
Fax: +358 (0) 207 900 809  
Website: www.oki.fi

**Oki Systems (Holland) b.v.**

Neptunstraat 27-29  
2132 JA Hoofddorp

Helpdesk: 0800 5667654  
Tel: +31 (0) 23 55 63 740  
Fax: +31 (0) 23 55 63 750  
Website: www.oki.nl

**Oki Systems (Norway) AS**

Tevlingveien 23  
N-1081 Oslo

Tel: +47 (0) 63 89 36 00  
Telefax: +47 (0) 63 89 36 01  
Ordrefax: +47 (0) 63 89 36 02  
Website: www.oki.no

**General Systems S.R.L.  
(Romania)**

Sos. Bucuresti-Ploiesti Nr. 135.  
Bucharest 1  
Romania

Tel: +40 21 303 3138  
Fax: +40 21303 3150  
Website: http://romania.oki.com

Var vänlig kontakta din Återförsäljare  
i första hand, för konsultation. I  
andra hand kontakta

**Oki Systems (Sweden) AB**

Borgafjordsgatan 7  
Box 1191  
164 26 Kista

Tel. +46 (0) 8 634 37 00  
e-mail:  
info@oki.se för allmänna frågor om  
Oki produkter

support@oki.se för teknisk support  
gällandes Oki produkter

Vardagar: 08.30 - 12.00,  
13.00 - 16.00  
Website: www.oki.se

**Oki Systems (Schweiz)**

Baslerstrasse 15  
CH-4310 Rheinfelden

Support deutsch +41 61 827 94 81  
Support français +41 61 827 94 82  
Support italiano +41 061 827 9473  
Tel: +41 61 827 9494  
Website: www.oki.ch

**Oki Data Americas Inc.(United  
States • États-Unis)**

2000 Bishops Gate Blvd.  
Mt. Laurel, NJ 08054  
USA

Tel: 1-800-654-3282  
Fax: 1-856-222-5247  
http://WWW.OKIPRINTINGSOLUTIONS.COM  
http://my.okidata.com

**Oki Data Americas Inc.(Canada •  
Canada)**

4140 B Sladeview Crescent Units 7&8  
Mississauga, Ontario  
Canada L5L 6A1

Tél: 1-905-608-5000  
Télé: 1-905-608-5040  
http://WWW.OKIPRINTINGSOLUTIONS.COM

**Oki Data Americas Inc.(América  
Latina (OTRO))**

2000 Bishops Gate Blvd.  
Mt. Laurel, NJ 08054  
USA

Tel (Español): 1-856-222-7496  
1-856-222-5276  
Fax: 1-856-222-5260  
Email: LASatisfaction@okidata.com

**Oki Data de Mexico, S.A. de C.V.**

Mariano Escobedo #748, Piso 8  
Col. Nueva Anzures  
C.P. 11590, México, D.F.

Tel: 52-555-263-8780  
Fax: 52-555-250-3501  
http://WWW.OKIPRINTINGSOLUTIONS.COM

**Oki Data do Brasil, Ltda.**

Rua Avenida Alfredo Egidio de souza Aranha  
100-4º andar-Bloco C Chacara Santo Antonio  
Sao Paulo, Brazil 04726-170

Tel: 55-11-3444-6747 (Grande São  
Paulo)  
0800-11-5577 (Demais  
localidades)  
Fax: 5511-3444-3501  
e-mail: okiserv@okidata.com.br  
http://WWW.OKIPRINTINGSOLUTIONS.COM

**Oki Data (Singapore) Pte. Ltd.**

438A Alexandra Road #02-11/12,  
Lobby 3, Alexandra Technopark  
Singapore(119967)

Tel:(65) 6221 3722  
Fax:(65) 6594 0609  
http://www.okidata.com.sg

**Oki Systems (Thailand) Ltd.**

1168/81-82 Lumpini Tower,  
27th Floor Rama IV Road  
Tungmahamek, Sathorn  
Bangkok 10120

Tel:(662) 679 9235  
Fax:(662) 679 9243/245  
http://www.okisysthai.com

**Oki Systems (Hong Kong) Ltd.**

Suite 1908, 19/F, Tower 3,  
China Hong Kong City  
33 Canton Road, TsimShaTsui,  
Kowloon, Hong Kong

Tel: (852) 3543 9288  
Fax: (852) 3549 6040  
http://www.okiprintingsolutions.com.hk

**Oki Data(Australia) Pty Ltd.**

Levw1 67 Epping Road, Macquarie Park  
NSW 2113, Australia

Tel: +61 2 8071 0000  
(Support Tel: 1800 807 472)  
Fax: +61 2 8071 0010  
http://www.oki.com.au

**Comworth Systems Ltd.**

8 Antares Place Mairangi Bay,  
Auckland, New Zealand

Tel:(64) 9 477 0500  
Fax:(64) 9 477 0549  
http://www.comworth.co.nz

**Oki Data(S) P Ltd. Malaysia Rep  
Office**

Suite 21.03, 21st Floor Menara IGB,  
Mid Valley City,  
Lingkaran Syed Pura 59200,  
Kuala Lumpur, Malaysia

Tel: (60) 3 2287 1177  
Fax: (60) 3 2287 1166

**Oki Data Corporation**  
4-11-22 Shibaura, Minato-ku, Tokyo  
108-8551, Japan

[www.okiprintingsolutions.com](http://www.okiprintingsolutions.com)

