

# **Unified Label Utility-II Manual Technical Reference**

## ■ Table of Contents

<b>1. Foreword .....</b>	<b>3</b>
<b>2. Operating System Environment .....</b>	<b>4</b>
<b>3. Usage Preparation .....</b>	<b>4</b>
<b>4. Unified Label Utility-II Usage .....</b>	<b>5</b>
4-1 User Setting Manager .....	5
4-2 Configure Print Quality .....	11
4-3 Manual Calibration .....	12
4-4 PCX File Downloader .....	13
4-5 File Transfer .....	15
4-6 Printer Tools .....	16
4-7 Communication Window .....	17
4-8 SLCS Test Tool .....	18

## **1. Foreword**

The Unified Label Utility-II can be used for various purposes.

Details on the usage of each function are described as follows.

1) User Setting Manager

This function is used to change default settings of the printer, including code pages, serial settings, paper size, and print density, to values suited to the user environment.

2) Configure Print Quality

This function is used to configure optimal printing quality. Sample labels are printed out with various settings for reference.

3) Manual Calibration

This function is used to calibrate media sensor manually.

4) PCX File Downloader

This function is used when saving a black-and-white PCX-format image to flash memory.

5) File transfer

This function is used when sending test files, such as command scripts, to the printer.

6) Printer Tools

This function is used to check various information of printer and execute various printer mode.

7) Communication Window

This function is used to test printing-related commands and create a brief label sample for test printing. This function is also used to read data response from printer.

8) SLCS Test Tool

This function is used to test printing-related commands of the SLCS and create a brief label sample for test printing.

We at Oki Data maintain ongoing efforts to enhance and upgrade the functions and quality of all our products. In following, product specifications and/or user manual content may be changed without prior notice.

## 2. Operating System Environment

Unified Label Utility-II run on any of the following operating systems.

- Microsoft Windows 2000 (32bit)
- Microsoft Windows XP (32bit/64bit)
- Microsoft Windows Server 2003 (32bit/64bit)
- Microsoft Windows Vista (32bit/64bit)
- Microsoft Windows Server 2008 (32bit/64bit)
- Microsoft Windows Server 2008R2 (64bit)
- Microsoft Windows 7 (32bit/64bit)
- Microsoft Windows 8 (32bit/64bit)
- Microsoft Windows Server 2012 (64bit)

## 3. Usage Preparation

### 1) Printer and PC Connection.

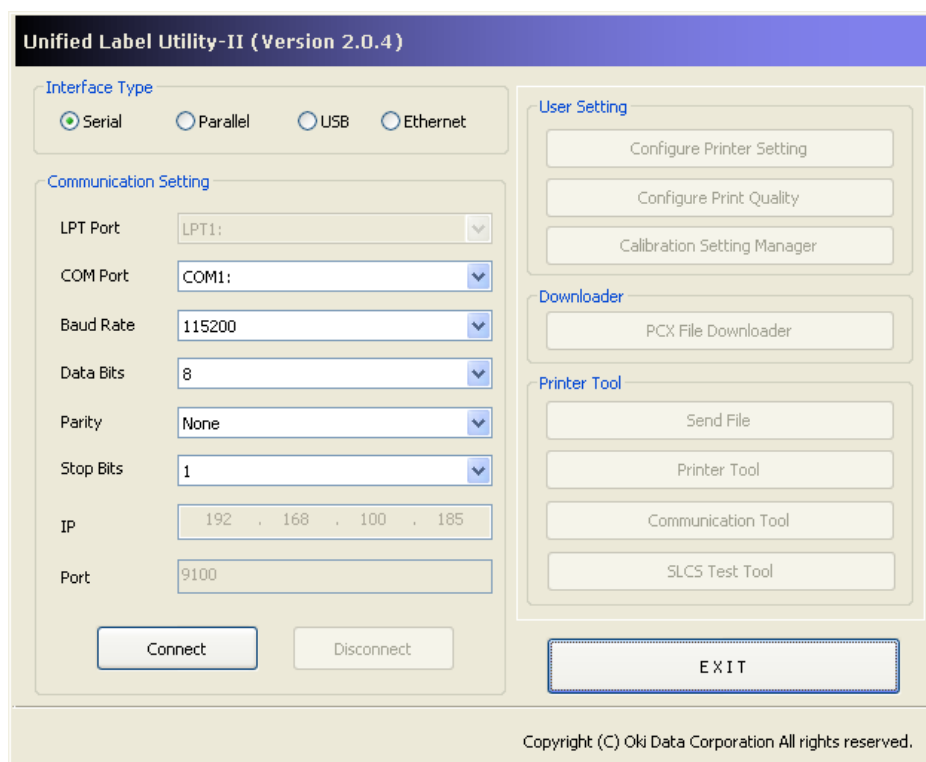
Connect the printer and PC via the interface cable.  
(The interfaces available for usage are Serial, Parallel, USB and Ethernet.)

### 2) Unified Label Utility-II Program Execution.

The program can be installed from the accompanying CD

### 3) Select the interface type and communication conditions.

### 4) Click on the “Connect Button”, If the connection is successful, The inactive buttons becaom active with the message “Success open port”. If the connection fails, the following error message appears. “Cannot open port! Please check printer and cable”.



## 4. Unified Label Utility-II Usage

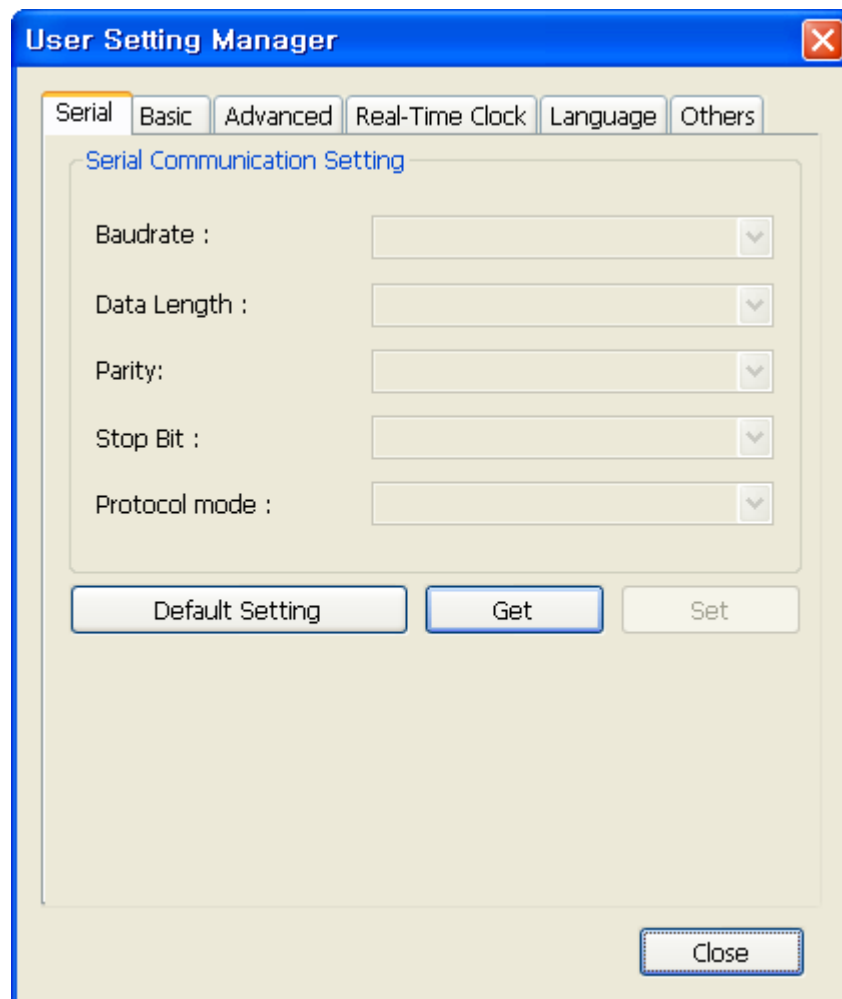
### 4-1 User Setting Manager

This function is used to change default settings of the printer, including code pages, serial settings, paper size, and print density, to values suited to the user environment.

Click the “Configure Printer Setting”.

#### 4-1-1 Serial Communication Setting

1) Click the “Serial”.



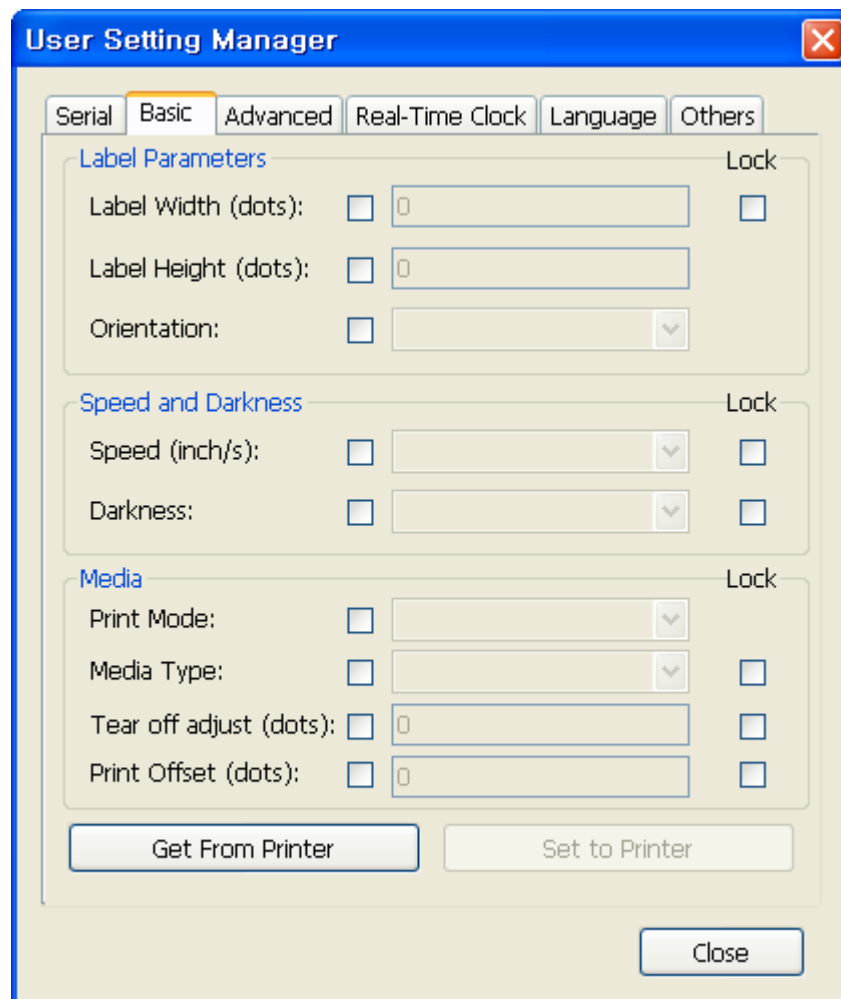
2) Click the “Get” button to read the printer setting value.

3) After modifying setting values, click the “Set” button to store the changed settings.

4) Click the “Default Setting” button followed by the “Set” button to set each item to its default value.

## 4-1-2 Basic Setting

1) Click the “Basic” Tab to configure speed, darkness and Media options.



2) Click the “Get” button to read the printer setting value.

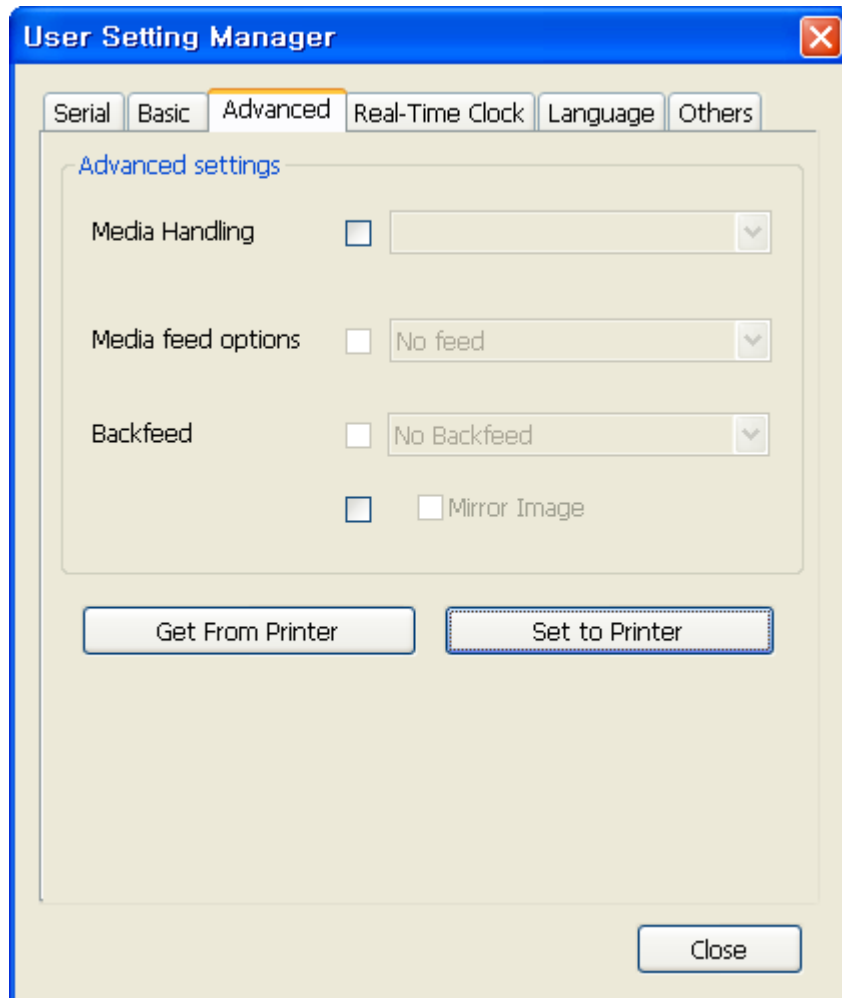
3) Modify each value.

4) If you want to lock the setting value check the lock checkbox.

5) Click the “Set to Printer” to apply changed values to printer.

4-1-3 Advanced Settings

1) Click the “Advanced” tab to configure Meida handling process options.



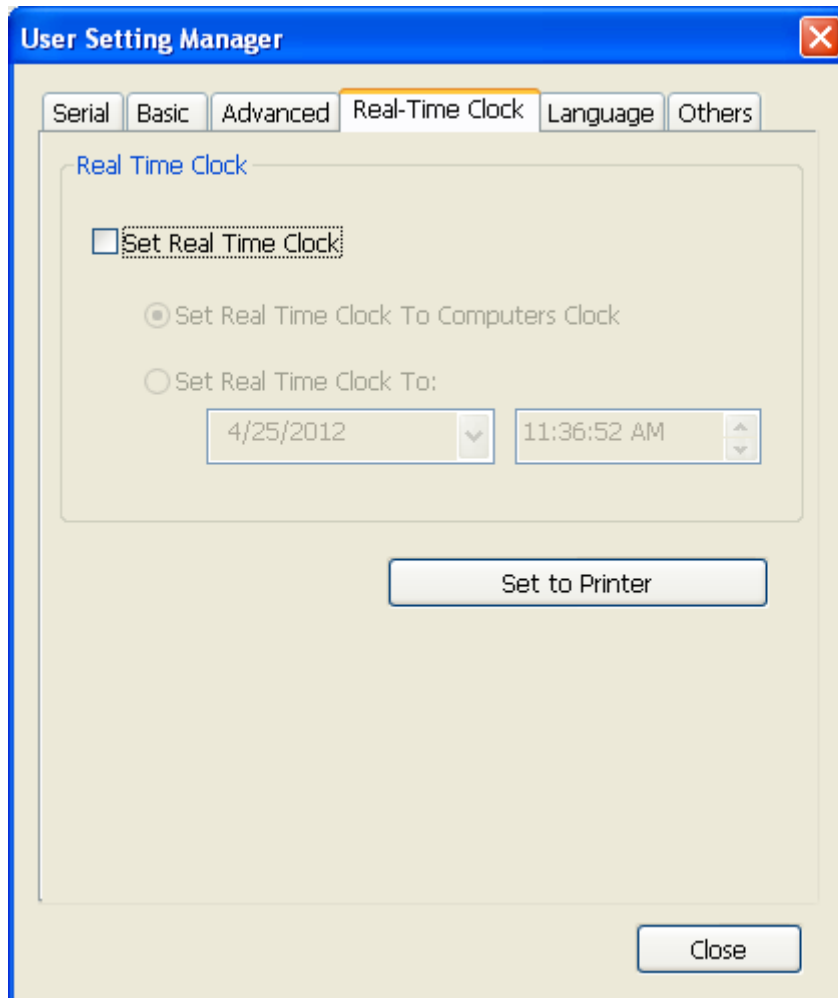
2) Click the “Get” button to read the printer setting value.

3) Modify each value.

4) Click the “Set to Printer” to apply changed values to printer.

4-1-4 Real-time Clock

1) Click the “Real-time Clock” tab to set Real-Time Clock.

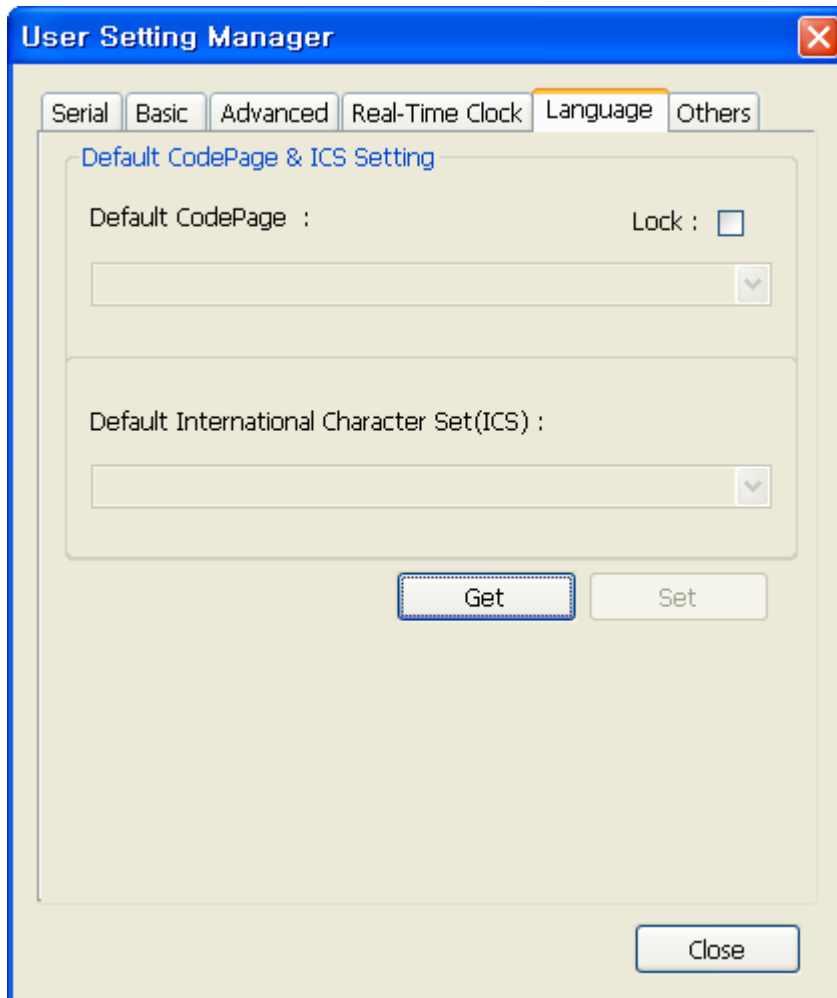


2) Configure the clocks and click the “Set to Printer” to apply to printer.



4-1-5 Language

1) Click the “Language” tab to set Default Codepage, Default International Character set.



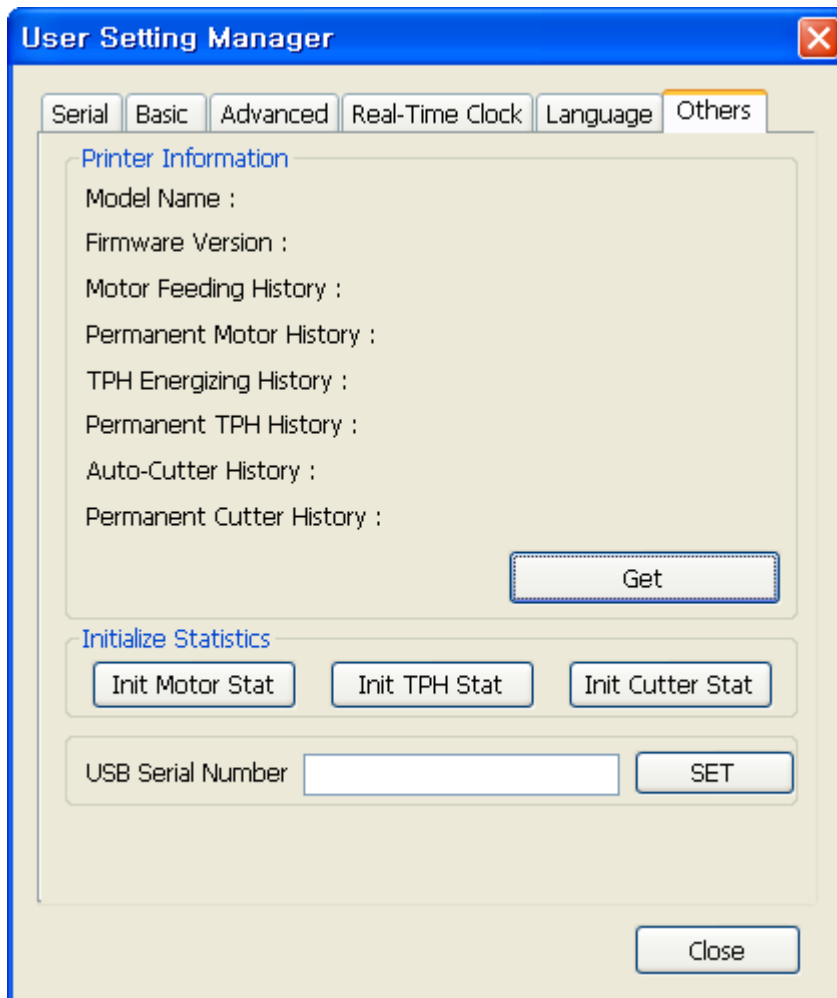
2) Click the “Get” button to read the printer setting value.

3) Modify each value.

4) Click the “Set” button to apply changed values to printer.

## 4-1-6 Others

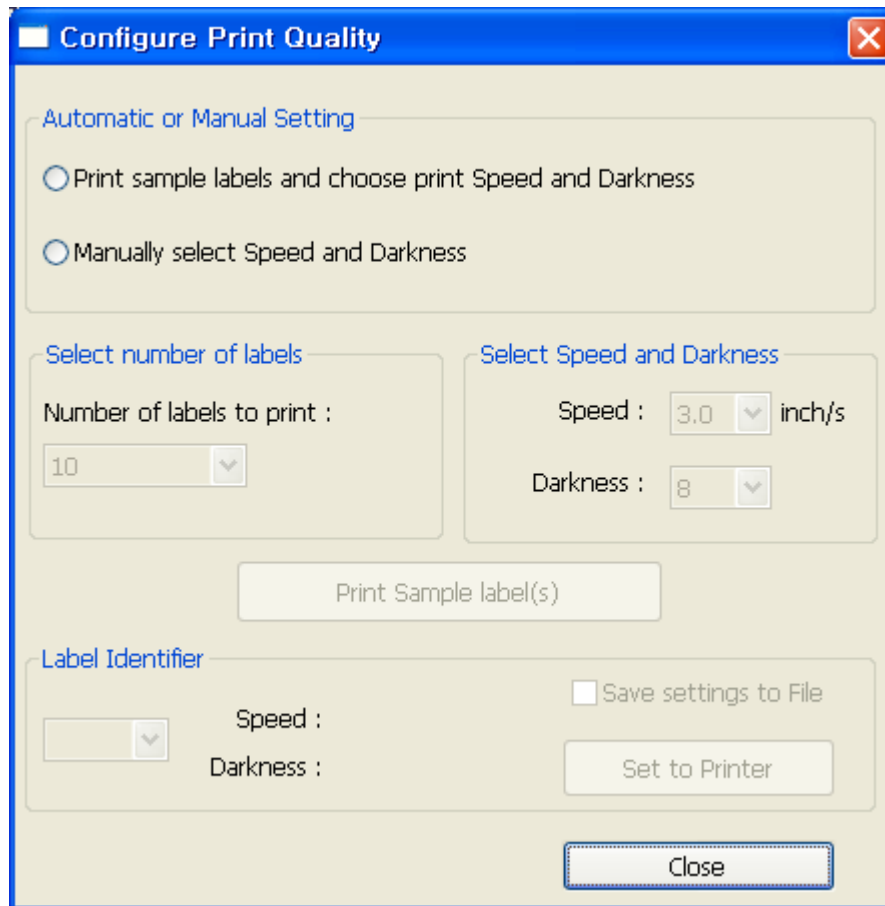
- 1) Click the “Others” tab to set printer information, initialize Motor, TPH, Cutter statistic and set USB serial number.



- 2) Click the “Get” button to read the printer information value.
- 3) Click the “Init Motor Stat”, “Init TPH Stat”, “Init Cutter Stat” to initialize each value.
- 4) Input 13 decimal number and click the “Set” button to set USB serial number.

## 4-2 Configure Print Quality

This function is to configure optimal printing quality. Print reference labels with various settings to find the optimal setting.



- Print Sample labels and choose print Speed and Darkness

- 1) "Select number of labels" means the number of reference labels with different settings.
- 2) Click the "Print Sample label(s)" button to start printing reference labels which have specific identifier.
- 3) Choose Label identifier of the label with best printing quality among the printed labels.
- 4) Click the "Set to Printer" button to apply to printer.

- Manually select Speed and Darkness

- 1) Choose speed and darkness manually.
- 2) Click "Print Sample label(s)" button to print label with the selected values.
- 3) After finding optimal value, Click the "Set to Printer" button to apply to printer.

### 4-3 Manual Calibration

Manual-calibration of media detection can be used when the printer cannot detect a media gap (or black mark) even after auto-calibration has been executed.

Users can calibrate sensor parameters in detail.

Please make sure the printer is connected and execute the utility program.  
Press the Calibration Setting Manager Button after setting the interface type.

**Manual Calibration**

**Sensing Value Distribution**

<input type="radio"/>	32 :	0000
<input type="radio"/>	64 :	0000
<input type="radio"/>	96 :	0000
<input type="radio"/>	128 :	0000
<input type="radio"/>	160 :	0000
<input type="radio"/>	192 :	0000
<input type="radio"/>	224 :	0000
<input type="radio"/>	256 :	0000
<input type="radio"/>	288 :	0000
<input type="radio"/>	320 :	0000
<input type="radio"/>	352 :	0000
<input type="radio"/>	384 :	0000
<input type="radio"/>	416 :	0000
<input type="radio"/>	448 :	0000
<input type="radio"/>	480 :	0000
<input type="radio"/>	512 :	0000
<input type="radio"/>	544 :	0000
<input type="radio"/>	576 :	0000
<input type="radio"/>	608 :	0000
<input type="radio"/>	640 :	0000
<input type="radio"/>	672 :	0000
<input type="radio"/>	704 :	0000
<input type="radio"/>	736 :	0000
<input type="radio"/>	768 :	0000
<input type="radio"/>	800 :	0000
<input type="radio"/>	832 :	0000
<input type="radio"/>	864 :	0000
<input type="radio"/>	896 :	0000
<input type="radio"/>	928 :	0000
<input type="radio"/>	960 :	0000
<input type="radio"/>	992 :	0000
<input type="radio"/>	1024 :	0000

**STEP 1 : Start**

Sensing Type :  
 G  B

Label Length : (mm)  
150

Check Sensing Value

**STEP 2 : Save**

Middle Gap Value :  
0

Gap Count :  
7

Save Calibration

Cancel Calibration

CLOSE

- 1) Select the sensing type and input the label length by millimeter and click on “Check Sensing Value” tap. Then printer starts to calibrate.
- 2) After scanning the paper, the scanned values are displayed on the utility.
- 3) Optimal sensing values will appear in black bold letters on the left of the utility screen and select one of the values and click on “Save Calibration”.
- 4) If chosen value does not work properly, please try the other values among the black bold letters.
- 5) To go back to the initial value, please click on “Cancel Calibration”.

## **4-4 PCX File Downloader**

This function is used when saving a black-and-white PCX-format image to flash memory.

Saved images can be recalled at any time for printing.

PCX File Downloader usage is described as follows.

The image file must be prepared prior to using this function.

Click the "PCX File Downloader" button.

### **4-4-1 Image Store (IS)**

- 1) Open the PCX file (\*.pcx).
- 2) Enter the image name and click the Download button. The image name is used to recall or delete images

### **4-4-2 Image Delete (ID)**

- 1) Check the list of stored images by clicking the Image Information button.
- 2) Enter the name of the image to be deleted and click the Delete Image button.
- 3) To delete all images stored in the printer memory, click the Delete All Images button without entering an image name.

### **4-4-3 Image Information (II)**

Information for the saved image is displayed.

### **4-4-4 Image Recall (IR)**

Downloaded images can be recalled and printed using the IR command.

**PCX File Downloader** ✖

Image Store (IS)

...

Image Name :

PCX File Information

File Name: None  
File Size: 0 Byte

DownLoad

Image Delete (ID)

Image Name :

Delete Image Delete All Images

Image Information (II)

Image Information

Image Recall (IR)

Image Name :

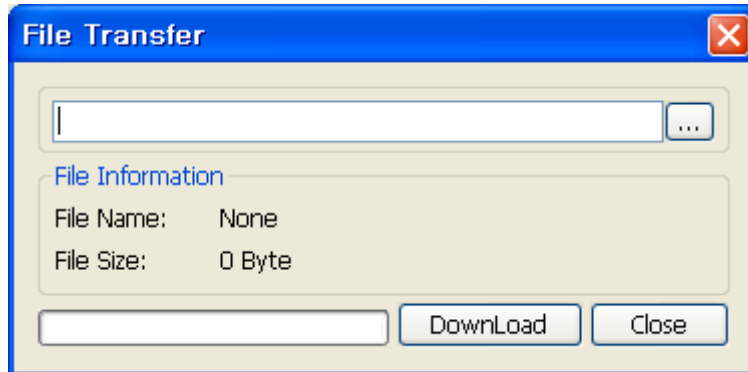
X Position :       Y Position :

Image Recall CLOSE

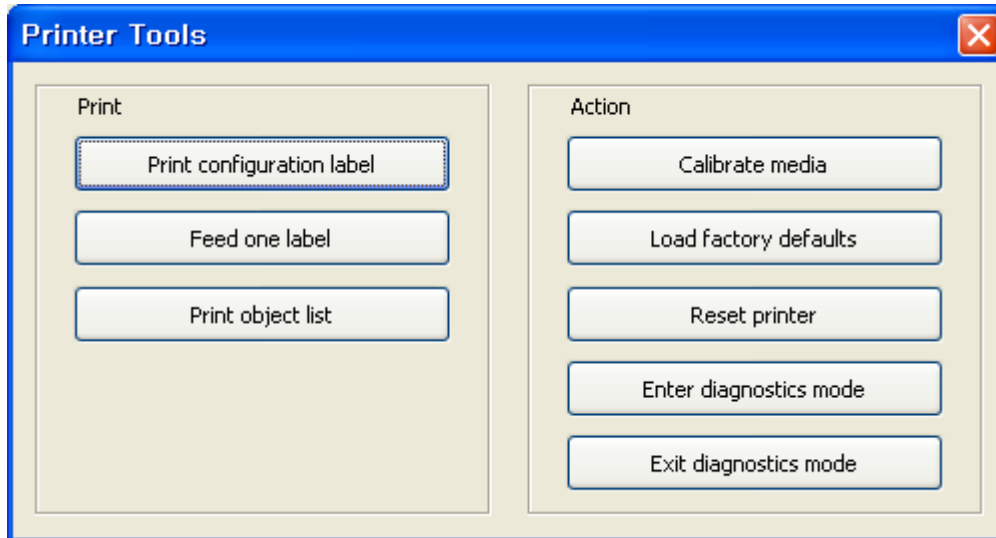
#### **4-5 File Transfer**

This function is used when sending test files, such as command scripts, to the printer.

1) Click “Send File” button on the main window.



2) Select the file to be sent and click the “Download” button to send the file to the printer.

**4-6 Printer Tools**

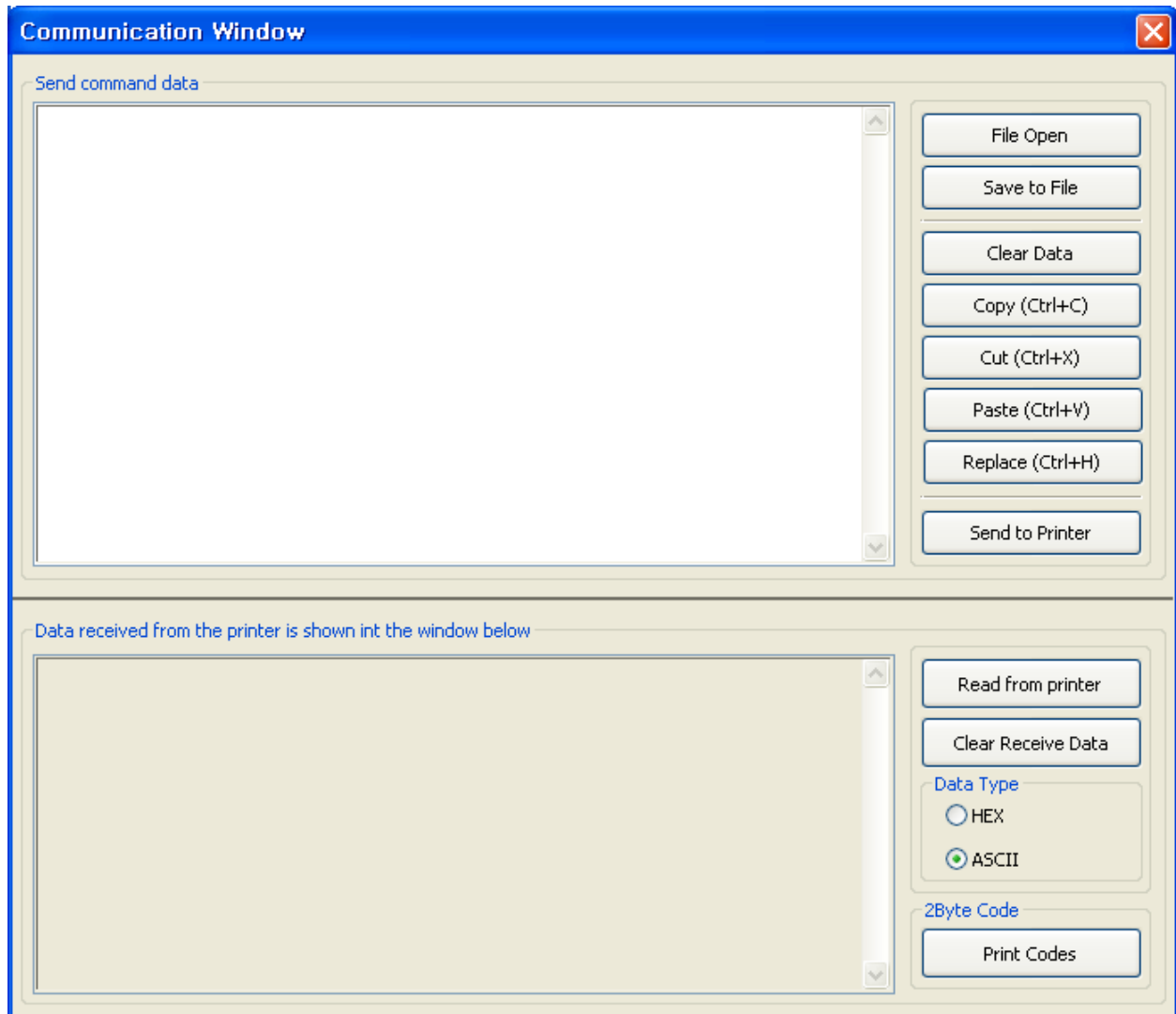
- Print configuration label: To print out printer's configuration information.
- Feed one label: To feed one blank label.
- Print object list: To print out the fonts list and memory informations.
- Calibration media: To execute auto-calibration to calibrate media sensor.
- Load factory defaults: To set printer's default configuration as factory's initial setting.
- Reset printer: Reboot printer.
- Enter diagnostics mode: To make printer enters into Diagnostic Mode(data dump mode). In this mode, printer prints out all received data with hex decimal format.
- Exit diagnostic mode: To exit Diagnostic Mode and return to normal mode.



## 4-7 Communication Window

This function is used to test commands or create sample labels. Type the command script in the edit window or open the saved command script. Responed data from printer can be read with this program.

1) Click the “Communication Tool” on the main window to start this function.



2) Type the command lines directly or open the save command script file.

3) Click the “Send to Printer” button to send data to printer.

4) If the command which request response from printer to host is used, “Read from Printer” can be used to see responed data from printer.

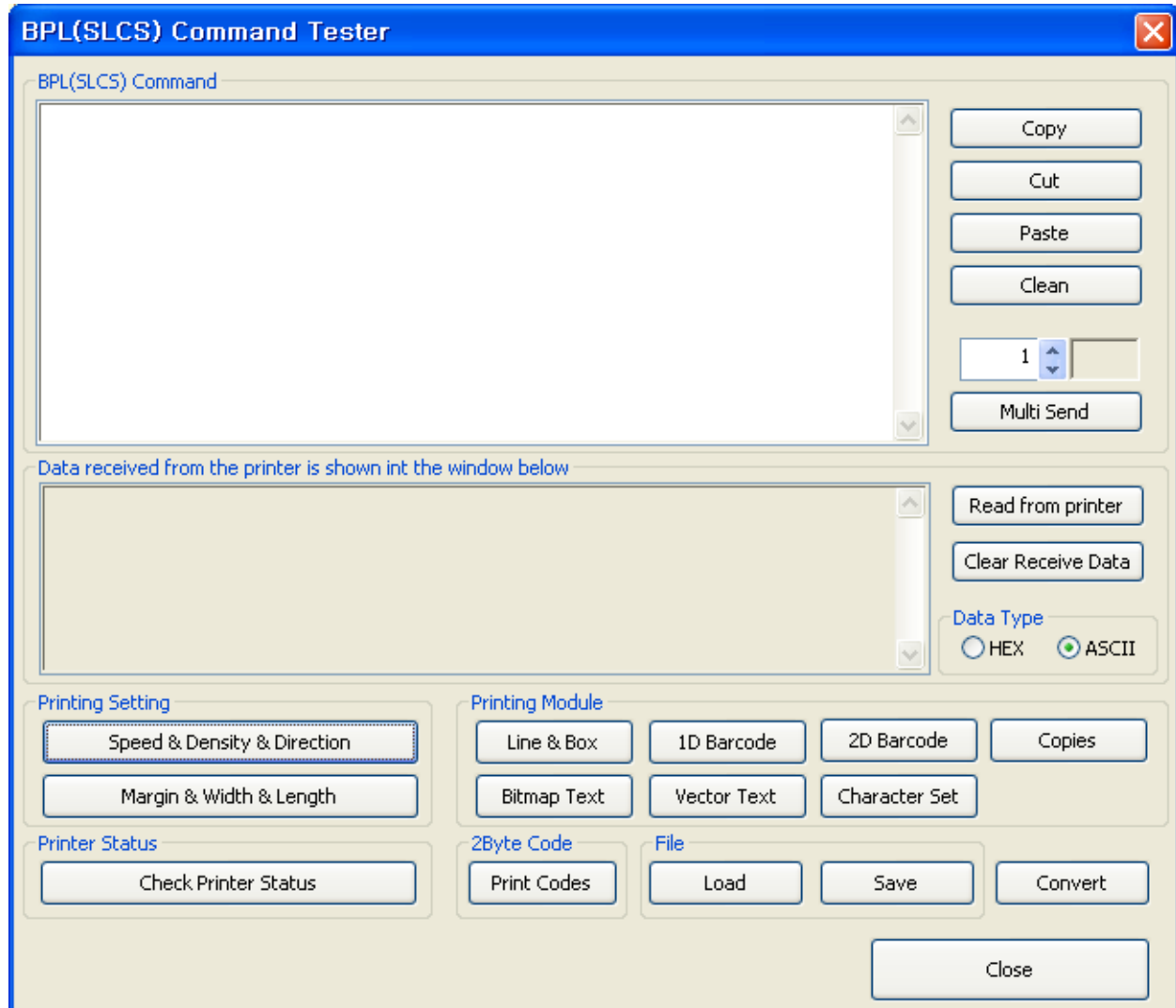
5) “Clear Receive Data” button is used to make the received data windows clean.

6) Click the “Print Codes” button to print two bytes codepage.

**4-8 SLCS Test Tool**

This function is used to test printing-related commands of the SLCS and create a brief label sample for test printing.

1) Click the “SLCS Test Tool” button.



2) Click the “Multi Send” button to send data to printer.

3) If the command which request response from printer to host is used, “Read from Printer” can be used to see responded data from printer.

4) “Clear Receive Data” button is used to make the received data windows clean.

- 5) The function of each button is described as follows
- a) Line & Box: creates a command for line and box drawing
  - b) 1D Barcode: creates a command for a 1-dimensional barcode
  - c) 2D Barcode: creates a command for a 2-dimensional barcode
  - d) Copies: printing counts
  - e) Bitmap Text: creates a command for bitmap image string recognition
  - f) Vector Text: creates a command for vector image string recognition
  - g) Character Set: creates a command for code page and ICS setting
  - h) Speed & Density & Direction: creates a command for speed, print density, and print direction setting
  - i) Margin & Width & Length: creates a command for margin and width and length of print paper setting
  - j) Check Printer Status: check cover, paper, and error status of printer
  - k) SLCS Command Edit: function for command cutting, copying, pasting, and erasing
  - l) Print Codes: print 2byte codes
  - m) Load: recalls a file with a saved command
  - n) Save: saves a created command to a file
  - o) Convert: converts measurement units (inch, mm, cm)
  - p) Close: closes the SLCS test program

# Oki contact details

## **Oki Systems (UK) Ltd**

Blays House  
Wick Road  
Egham  
Surrey  
TW20 0HJ

Tel: +44 (0) 1784 274300  
Fax: +44 (0) 1784 274301  
<http://www.oki.co.uk>

## **Oki Systems Ireland Limited**

The Square Industrial Complex  
Tallaght  
Dublin 24

Tel:+353 (0) 1 4049590  
Fax:+353 (0)1 4049591  
<http://www.oki.ie>

## **Oki Systems Ireland Limited - Northern Ireland**

19 Ferndale Avenue  
Glengormley  
BT36 5AL  
Northern Ireland

Tel:+44 (0) 7767 271447  
Fax:+44 (0) 1 404 9520  
<http://www.oki.ie>

Technical Support for all Ireland:

Tel:+353 1 4049570  
Fax:+353 1 4049555  
E-mail: [tech.support@oki.ie](mailto:tech.support@oki.ie)

## **Oki Systems (Czech and Slovak), s.r.o.**

IBC – Pobřežní 3  
186 00 Praha 8  
Czech Republic

Tel: +420 224 890158  
Fax:+420 22 232 6621  
Website: [www.oki.cz](http://www.oki.cz), [www.oki.sk](http://www.oki.sk)

## **Oki Systems (Deutschland) GmbH**

Hansaallee 187  
40549 Düsseldorf

Tel: 01805/6544357\*\*  
01805/OKIHELP\*\*  
Fax: +49 (0) 211 59 33 45  
Website:  
[www.okiprintingsolutions.de](http://www.okiprintingsolutions.de)  
[info@oki.de](mailto:info@oki.de)

\*\*0,14€/Minute aus dem dt.  
Festnetz der T-Com (Stand  
11.2008)

## **Διανομέας των συστημάτων OKI**

CPI S.A1 Rafailidou str.  
177 78 Tavros  
Athens  
Greece

Tel: +30 210 48 05 800  
Fax:+30 210 48 05 801  
EMail:[sales@cpigr](mailto:sales@cpigr)

## **Oki Systèmes (France) S.A.**

44-50 Av. du Général de Gaulle  
94246 L'Hay les Roses  
Paris

Tel:+33 01 46 15 80 00  
Télécopie:+33 01 46 15 80 60  
Website: [www.oki.fr](http://www.oki.fr)

## **OKI Systems (Magyarország) Kft.**

Capital Square  
Tower 2  
7th Floor  
H-1133 Budapest,  
Váci út 76  
Hungary

Telefon: +36 1 814 8000  
Telefax: +36 1 814 8009  
Website: [www.okihu.hu](http://www.okihu.hu)

## **OKI Systems (Italia) S.p.A.**

via Milano, 11,  
20084 Lacchiarella (MI)

Tel:+39 (0) 2 900261  
Fax:+39 (0) 2 90026344  
Website: [www.oki.it](http://www.oki.it)

## **OKI Printing Solutions**

Platinum Business Park II, 3rd  
Floor  
ul. Domaniewska 42  
02-672 Warsaw  
Poland

Tel:+48 22 448 65 00  
Fax:+48 22 448 65 01  
Website: [www.oki.com.pl](http://www.oki.com.pl)  
E-mail: [oki@oki.com.pl](mailto:oki@oki.com.pl)  
Hotline: 0800 120066  
E-mail: [tech@oki.com.pl](mailto:tech@oki.com.pl)

## **Oki Systems (Ibérica) S.A.**

Sucursal Portugal  
Edifício Prime -  
Av. Quinta Grande 53  
7º C Alfragide  
2614-521 Amadora  
Portugal

Tel:+351 21 470 4200  
Fax:+351 21 470 4201  
Website:[www.oki.pt](http://www.oki.pt)  
E-mail : [oki@oki.pt](mailto:oki@oki.pt)

## **Oki Service Serviço de apoio técnico ao Cliente**

Tel: 808 200 197  
E-mail : [okiserv@oki.pt](mailto:okiserv@oki.pt)

## **OKI Europe Ltd. (Russia)**

Office 702, Bldg 1  
Zagorodnoye shosse  
117152, Moscow

Tel: +74 095 258 6065  
Fax: +74 095 258 6070  
e-mail: [info@oki.ru](mailto:info@oki.ru)  
Website: [www.oki.ru](http://www.oki.ru)

Technical support:  
Tel: +7 495 564 8421  
e-mail: [tech@oki.ru](mailto:tech@oki.ru)

## **Oki Systems (Österreich)**

Campus 21  
Businesszentrum Wien Sued  
Liebermannstrasse A02 603  
22345 Brun am Gebirge

Tel: +43 223 6677 110  
Drucker Support:  
+43 (0) 2236 677110-501  
Fax Support:  
+43 (0) 2236 677110-502  
Website: [www.oki.at](http://www.oki.at)

## **OKI Europe Ltd. (Ukraine)**

Raisy Opkinoy Street,8  
Building B, 2<sup>nd</sup> Floor,  
Kiev 02002  
Ukraine

Tel: +380 44 537 5288  
e-mail: [info@oki.ua](mailto:info@oki.ua)  
Website: [www.oki.ua](http://www.oki.ua)

## **OKI Sistem ve Yazıcı Çözümleri Tic. Ltd. Şti.**

Harman sok Duran Is Merkezi,  
No:4, Kat:6,  
34394, Levent  
İstanbul

Tel: +90 212 279 2393  
Faks: +90 212 279 2366  
Web: [www.oki.com.tr](http://www.oki.com.tr)  
[www.okiprintingsolutions.com.tr](http://www.okiprintingsolutions.com.tr)

## **Oki Systems (Belgium)**

Medialaan 24  
1800 Vilvoorde  
Helpdesk: 02-2574620  
Fax: 02 2531848  
Website: [www.oki.be](http://www.oki.be)

## **AlphaLink Bulgaria Ltd.**

2 Kukush Str.  
Building "Antim Tower", fl. 6  
1463 Sofia, Bulgaria

tel: +359 2 821 1160  
fax: +359 2 821 1193  
Website: <http://bulgaria.oki.com>

**OKI Printing Solutions**

Herstedøstervej 27  
2620 Albertslund  
Danmark

Adm.: +45 43 66 65 00  
Hotline: +45 43 66 65 40  
Salg: +45 43 66 65 30  
Fax: +45 43 66 65 90  
Website: www.oki.dk

**OKI Systems (Finland) Oy**

Polaris Capella  
Vänrikinkuja 3  
02600 Espoo

Tel: +358 (0) 207 900 800  
Fax: +358 (0) 207 900 809  
Website: www.oki.fi

**OKI Systems (Holland) b.v.**

Neptunstraat 27-29  
2132 JA Hoofddorp

Helpdesk: 0800 5667654  
Tel: +31 (0) 23 55 63 740  
Fax: +31 (0) 23 55 63 750  
Website: www.oki.nl

**OKI Systems (Norway) AS**

Tevlingveien 23  
N-1081 Oslo

Tel: +47 (0) 63 89 36 00  
Telefax: +47 (0) 63 89 36 01  
Ordrefax: +47 (0) 63 89 36 02  
Website: www.oki.no

**General Systems S.R.L. (Romania)**

Sos. Bucuresti-Ploiesti Nr. 135.  
Bucharest 1  
Romania

Tel: +40 21 303 3138  
Fax: +40 21303 3150  
Website: http://romania.oki.com

Var vänlig kontakta din  
Återförsäljare i första hand, för  
konsultation. I andra hand kontakta

**OKI Systems (Sweden) AB**

Borgafjordsgatan 7  
Box 1191  
164 26 Kista

Tel. +46 (0) 8 634 37 00  
e-mail:  
info@oki.se för allmänna frågor om  
OKI produkter

support@oki.se för teknisk support  
gällandes OKI produkter

Vardagar: 08.30 - 12.00,  
13.00 - 16.00  
Website: www.oki.se

**OKI Systems (Schweiz)**

Baslerstrasse 15  
CH-4310 Rheinfelden

Support deutsch +41 61 827 94 81  
Support français +41 61 827 94 82  
Support italiano +41 061 827 9473  
Tel: +41 61 827 9494  
Website: www.oki.ch

**OKI Data Americas Inc. (United States • États-Unis)**

2000 Bishops Gate Blvd.  
Mt. Laurel, NJ 08054  
USA

Tel: 1-800-654-3282  
Fax: 1-856-222-5247  
http://WWW.OKIPRINTINGSOLUTIONS.COM  
http://my.okidata.com

**OKI Data Americas Inc. (Canada • Canadá)**

4140B Sladeview Crescent Unit 7 & 8  
Mississauga, Ontario  
Canada L5L 6A1

Tél: 1-905-608-5000  
Télé: 1-905-608-5040  
http://WWW.OKIPRINTINGSOLUTIONS.COM

**OKI Data Americas Inc. (América Latina (OTRO))**

2000 Bishops Gate Blvd.  
Mt. Laurel, NJ 08054  
USA

Tel (Español): 1-856-222-7496  
1-856-222-5276  
Fax: 1-856-222-5260  
Email: LASatisfaction@okidata.com

**OKI Data de Mexico, S.A. de C.V.**

Mariano Escobedo #748, Piso 8  
Col. Nueva Anzures  
C.P. 11590, México, D.F.

Tel: 52-555-263-8780  
Fax: 52-555-250-3501  
http://WWW.OKIPRINTINGSOLUTIONS.COM

**OKI Data do Brasil, Ltda.**

Rua Alexandre Dumas, 2220-80  
andar Chácara Santo Antonio  
04717-004, São Paulo, SP Brasil

Tel: 55-11-3444-6747 (Grande São Paulo)  
0800-11-5577 (Demais localidades)  
Fax: 5511-3444-3501  
e-mail: okidata@okidata.com.br  
http://WWW.OKIPRINTINGSOLUTIONS.COM

**OKI Data (Singapore) Pte. Ltd.**

438A Alexandra Road #02-11/12,  
Lobby 3, Alexandra Technopark  
Singapore(119967)

Tel:(65) 6221 3722  
Fax:(65) 6594 0609  
http://www.okidata.com.sg

**OKI Systems (Thailand) Ltd.**

1168/81-82 Lumpini Tower,  
27th Floor Rama IV Road  
Tungmahamek, Sathorn  
Bangkok 10120

Tel:(662) 679 9235  
Fax:(662) 679 9243/245  
http://www.okisysthai.com

**OKI Data (Australia) Pty Ltd.**

Level1 67 Epping Road, Macquarie  
Park  
NSW 2113, Australia

Tel: +61 2 8071 0000  
(Support Tel: 1800 807 472)  
Fax: +61 2 8071 0010  
http://www.oki.com.au

**Comworth Systems Ltd.**

8 Antares Place Rosedale,  
Auckland 0632, New Zealand

Tel:(64) 9 477 0500  
Fax:(64) 9 477 0549  
http://www.comworth.co.nz

**OKI Data(S) P Ltd. Malaysia Rep**

Office  
Suite 21.03, 21st Floor Menara IGB,  
Mid Valley City,  
Lingkaran Syed Pura 59200,  
Kuala Lumpur, Malaysia

Tel: (60) 3 2287 1177  
Fax: (60) 3 2287 1166

**Oki Data Corporation**  
4-11-22 Shibaura, Minato-ku, Tokyo  
108-8551, Japan

[www.okiprintingsolutions.com](http://www.okiprintingsolutions.com)

