



Wide Format Multifunction Printer  
**LP-1030**  
Series

**OKI**

- High Speed Printing & Scanning
- Ultra-Small Footprint
- 8.5-inch Color Touch Panel
- Easy Fill Toner Chamber
- High Resolution & Excellent Line Acuity
- Low Running Costs
- Reliable
- User-Replaceable Process Cartridge



*The Teriostar LP-1030 offers the best productivity in its class.*

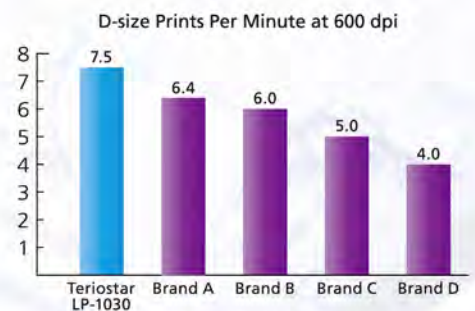
*Two models are available: the LP-1030-MF, a multifunction model which includes a 600 dpi scanner / copier, and the LP-1030, a printer model.*

*Both models include standard features such as integrated network controller, PC-based software suite (TerioStation), automatic roll paper width detection, dual output slots, large color touch panel, user-replaceable process cartridge.*

## High-Performance

### 7.5 D(7.0 A1) Per Minute Print Speed

LED printers offer faster print speeds and much lower running and maintenance costs than inkjet printers, and the new Teriostar LP-1030 LED printers offer the highest performance printing in its price and size class. Teriostar printers have always led the industry in high-speed printing because they use parallel processing (one job is printing while another is processing). Teriostars offer the very best toner adhesion and black line acuity, even at fast print speeds.



### Maximum Uptime

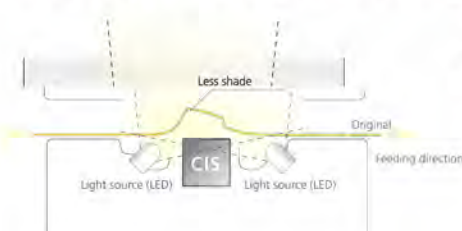
Teriostar LED printers offer the industry's first and only user-replaceable drum and long-life charge wire. That means users can change the entire process cartridge/drum and charge wire at any time. This reduces emergency service calls, reduces downtime and gives Teriostar maximum uptime. OKI Data Infotech printers have a well-deserved reputation as the most reliable LED printer in the CAD/CAM and A/E/C industry. Quality workmanship and parts are built into every Teriostar printer and copier.



### Fast B&W and Color Scanning

Super fast scanning (up to 240 mm/9.4" per second) and super fast copying, even at 600 dpi. A new improved dual-light CIS system improves scanning

quality for paper with folds or wrinkles. Full control for the front panel allows all standard scanning and copying functions, including scanning PDF files to shared network folders.







## Compact & Easy-to-Use

### Ultra-Small Footprint

The LP-1030 is up to 40% smaller than competitive models. All paper operations are from the front, so the LP-1030 can be pushed right up against a wall. This saves space and provides easy printer positioning in small workspaces.



### Easy-to-Use Color Touch Control Panel

A 8.5" color touch screen and convenient buttons make all printer and copier operations fast and easy.



### Easy Fill Toner System

The Teriostar can hold up to 3 Toner cartridges in its high-capacity toner compartment. Simple, clean-hands system prevents spilling while refilling. Cartridges are easy and fast to replace.



### Dual Output Paths

The LP-1030 automatically senses output print size and delivers small prints to the tray and large prints to the catch basket or the stacker.

\*Tray, catch basket and stacker are optional.



## Other Features (Standard)

#### •Automatic Roll Paper Width Detection

No need for users to manually change roll settings. the LP-1030 can automatically detect the paper width.

#### •Scan to Job box

Scanned data can be stored in the HDD of LP-1030. Stored data can be viewed as thumbnail on the control panel. You can search, copy and submit the data very easily.

#### •Scan to Folder

Send scanned data directly to a shared folder.

#### •Simple Color Copy

Users can scan directly to a printer on the network without any computer or software.

#### •Job Control

User can sort or cancel a job in queue via web browser or operation panel.

#### •User Authentication

- PIN Code :User can log in only with PIN.
- Password Authentication :Login name and password are required to log in.

#### •Job Accounting

Accounting data can be easily downloaded in CSV format.

#### •PlotDataToFile function

The LP-1030 converts plot images when printed with the Printer into TIFF Files, and saves them in the Printer's HDD.

#### •Security Print

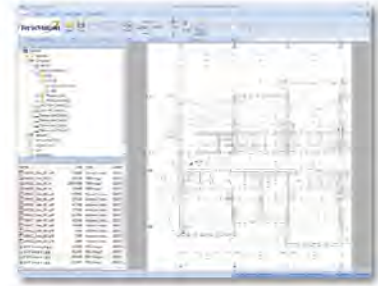
When authenticated in print mode, print jobs received by the Printer are stored on its HDD until authentication is completed.

#### •Large Capacity Waste Toner Bottle



## TerioStation Software Included

A complete PC based software suite that allows you to view, resize, print, scan, and copy. Supports true drag and drop file management, full file view capabilities, a sophisticated print queue, multiple printer support. Scanning supports copying, printing, and creation of multiple page PDFs.



Specification		LP-1030-MF Multi-Function Model	LP-1030 Printer Model
Printer	Imaging Method	Electrophotographic Technology (LED exposure / single component type dry development / OPC drum)	
	Output Resolution	600dpi	
	Continuous Output Speed	7.5 D-size prints per minute / 7.0 A1-size prints per minute	
	Print Width	Maximum 914mm (36 inches), Minimum 279mm (11 inches)	
	Print Length	Maximum 10 meters (32 feet)*1	
	Print Margins	5mm (0.2 inch) from each side	
	Paper Feed	1 roll (up to 36 inches wide)	
	Paper Types	Plain paper, tracing paper (75g/m <sup>2</sup> ), Matt film (90um)	
	Data Formats	HP-GL, HP-GL/2, HP RTL, TIFF, CALS	
Scanner	Scanning Resolution	600dpi	-
	Scanning Speed	240 mm (9.4 inches) per second*2 Black & White or Color	-
	Scanning Width	Maximum 914 mm (36 inches) Minimum 182 mm (7 inches)	-
	Scanning Length	Maximum 10 meters (32 feet)*3	-
	Data Formats	Black & White: TIFF, PDF Color: TIFF, PDF, JPEG	-
Others	Memory	2 GB	
	HDD	320 GB	
	Interface	Ethernet (10Base-T / 100Base-Tx / 1000Base-T)	
	Network Protocol	TCP/IP(ftp, lpr, socket)	
	Logical Port	10 ports	
	Web Function	Available	
	Dimensions	1200 (W) x 605 (D) x 1145 (H) mm*4 47 x 24 x 45 inches	1200 (W) x 520 (D) x 1100 (H) mm*4 47 x 20 x 43 inches
	Weight	190 kg or less*5	170 kg or less*5
	Power Voltage	AC120V±10% (USA version) , AC230V±10% (European version)	
	Power Consumption	Operation: less than 1.45 KW, Energy saving mode: less than 16.5 W	
Warm-Up Time	4 minutes or less		

\*1 Print length depends on types of media or operating environment \*2 Scanning speed varies by resolution \*3 Maximum scanning length may be limited by paper size, resolution or file format  
\*4 Catch basket, tray and paper tray excluded \*5 Toner and paper excluded

- Product appearance and specifications are subject to change without notice.
- As an ENERGY STAR® Partner, OKI Data Infotech Corporation has determined that these products meet the ENERGY STAR® guidelines for energy efficiency.
- All other trademarks are the property of their respective owners.



©2016 Oki Europe Ltd. Oki Europe Ltd. is part of the Oki Electric group of companies. Version 1.0 08/2015. Specification subject to change without notice. ColorPainter is a trademark of Oki Data Infotech Corporation. All trademarks acknowledged.

### OKI EUROPE LTD. WIDE FORMAT DIVISION

Siemensstraße 9  
D-63263 Neu-Isenburg,  
Germany  
Phone +49 6102 297 400  
[www.okieurope.com](http://www.okieurope.com)

**OKI**  
*Open up your dreams*