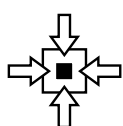




Network Guide



CONNECTIVITY



INFORMATION

EXECUTIVE
SERIES

CREATED BY
OKI PRINTING SOLUTIONS

PREFACE

Every effort has been made to ensure that the information in this document is complete, accurate, and up-to-date. The manufacturer assumes no responsibility for the results of errors beyond its control. The manufacturer also cannot guarantee that changes in software and equipment made by other manufacturers and referred to in this guide will not affect the applicability of the information in it. Mention of software products manufactured by other companies does not necessarily constitute endorsement by the manufacturer.

While all reasonable efforts have been made to make this document as accurate and helpful as possible, we make no warranty of any kind, expressed or implied, as to the accuracy or completeness of the information contained herein.

The most up-to-date drivers and manuals are available from:

<http://www.okiexecutiveseries.com>

07105901 iss.01; Copyright © 2009 Oki Europe Ltd. All rights reserved.

Oki is a registered trademark of Oki Electric Industry Company, Ltd.

Oki Printing Solutions is a registered trademark of Oki Data Corporation.

Microsoft, MS-DOS and Windows are registered trademarks of Microsoft Corporation.

Apple, Macintosh, Mac and Mac OS are registered trademarks of Apple Computer.

Other product names and brand names are registered trademarks or trademarks of their proprietors.

CONTENTS

Preface	2
Contents	3
Notes, cautions and warnings	5
Network configuration	6
Introduction	6
Specification	7
Configuration settings	7
Configuration utilities	8
Using Quick Setup	8
Using AdminManager	9
Installation	9
Interface	11
Device setup	12
IP address setup	24
Option menu	25
Help menu	25
Using a web browser	26
Microsoft internet explorer	26
Default user name and password	26
Adjusting printer settings	26
Using TELNET	27
Example TELNET configuration	27
Using SNMP	29
Management utility — PrintSuperVision	29
Printing utility — Oki LPR	29
System requirements	29
Installing the Oki LPR utility	30
Uninstallation	30
Microsoft windows	31
Overview	31
Installing a network printer	31
Using the Oki Driver Installer	31
Using the Add Printer Wizard	32
Network printer IP address configuration	33
NetBEUI protocol	34
Network printer settings	34
Windows XP	35
Windows Vista	35
Printer driver configuration	35
Mac OS X	36
Overview	36
Setting up a network printer	36
Printer setup utility	36
Installing the printer setup utility	36
The printer setup utility interface	37
menu options	38
Connecting to your printer	43
Snow Leopard (10.6) and Leopard (10.5)	43
Tiger (10.4)	44
Panther (10.3)	45
IP connection	46
Configuring printer hardware options	47
Printing the configuration page	47

Troubleshooting	48
TCP/IP	48
Computer cannot find the network interface card	48
Cannot print with lpr and ftp.	48
Incorrect user name on the banner page	48
NetBEUI	49
The network interface card is not identified	49
Error writing to Prn1	49
Web browser	50
Microsoft internet explorer	50
Mozilla firefox	50

NOTES, CAUTIONS AND WARNINGS

NOTE
A note provides additional information to supplement the main text.

CAUTION!

A caution provides additional information which, if ignored, may result in equipment malfunction or damage.

WARNING!

A warning provides additional information which, if ignored, may result in a risk of personal injury.

NETWORK CONFIGURATION

INTRODUCTION

Your machine incorporates a fast 100BASE-TX/10BASE-T network interface. This guide explains the functionality of the built in network interface. Access for interconnection is provided via an interface panel at the rear of the machine.

This network interface supports IEEE802.2, IEEE802.3, Ethernet-II and SNAP, and can detect those frame types automatically.

Also, the interface supports major protocols such as TCP/IP, IPX/SPX (NetWare) and NetBEUI.

This guide details the network interface specification and several software utilities.

You should set the emulation in the printer menu settings to Auto or PS before printing the configuration map.

NOTE

Not all utilities, features or protocols are supported by every operating system. Please check with your support website for latest information.

SPECIFICATION

Frame Types	IEEE 802.2 IEEE 802.3 Ethernet-II, SNAP, AUTO
Network Interface	100BASE-TX 10BASE-T
Network Protocols	TCP/IP V4, V6 IEEE 802.1x Network layer: ARP, IP, ICMP Session layer: TCP, UDP Application layer: LPR, FTP, TELNET, HTTP, IPP, BOOTP, DHCP, SNMP, DNS, SMTP, POP3, SLP, Bonjour IPX/SPX (NetWare) Remote printer mode (up to eight file servers and 32 queues) Print server mode over IPX/SPX (up to eight print servers) Encrypted password supported in print server mode EtherTalk NetBEUI NetBIOS, WINS SSL/TLS IPSec
Functions	Self-diagnostic test printing Banner supported Monitoring and configuration by Web browser Printer status notification by E-Mail

NOTE

Not all utilities, features or protocols are supported by every operating system. Please check with your support website for latest information.

CONFIGURATION SETTINGS

With the machine power switched on, print out the configuration map:

1. Press the **Enter** button.
2. Press the **Menu down** button then the **Enter** button to select the Print Information menu.
3. Select Configuration with the **Enter** button.
4. Press the **Enter** button once more to execute the Configuration menu.
5. When the Configuration map is printed, press **On Line** to exit the menu system.

On the first page of the Network Information that is printed out, under the heading "General Information" the MAC Address is given. For example:

MAC ADDRESS 00808784E3F1

The Ethernet address is therefore: 00:80:87:84:E3:F1

CONFIGURATION UTILITIES

You can configure the network interface (NIC) by using one of the following methods:

UTILITY	FEATURES	SYSTEM REQUIREMENTS
Quick Setup	<p>Configure the NIC easily and simply without installing any software packages into your system. You can set the following:</p> <ul style="list-style-type: none"> > Enable/disable TCP/IP, NetWare, EtherTalk, NetBEUI protocols. > Set IP address, Subnet Mask and Gateway for TCP/IP manually or by using DHCP. > Set NetWare Mode and create Queue/Print Server/Printer objects. > Zone name and Port name for EtherTalk. 	<p>Windows:</p> <p>Windows 2000 Windows XP Home/Professional Windows XP Professional x64 Edition Windows Server 2003 Windows Server 2003 x64 Edition Windows Server 2008 Windows Server 2008 x64 Edition Windows Vista 32-bit Windows Vista 64-bit</p> <p>(TCP/IP protocol or IPX/SPX protocol should be installed)</p> <p>Mac:</p> <p>Mac OS X 10.3.9 or greater</p>
Admin Manager	Configure the NIC in detail.	
Web Browser	Configure the NIC and printer by using a Web browser such as Microsoft Internet Explorer or Mozilla Firefox.	Microsoft Internet Explorer or similar. Operating system that supports Web browser.
Telnet	Configure the NIC using TELNET.	Third-party vendor developed TELNET client package.
SNMP	The machine and network card can be controlled using third-party vendor developed SNMP application.	Third-party vendor developed SNMP application.

USING QUICK SETUP

Quick Setup utility allows you to configure the network interface easily and simply without installing any software packages.

You can configure the following:

- > Enable/disable TCP/IP, NetWare, EtherTalk, NetBEUI protocols.
- > Set IP address, Subnet Mask and Gateway for TCP/IP manually or by using DHCP.
- > Set NetWare mode and create Queue/Print Server/Printer objects.
- > Zone name and Port name for EtherTalk.

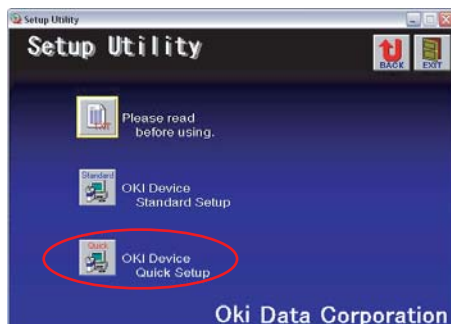
Configuration requires a PC with a supported Windows operating system (see above), running TCP/IP or IPX/SPX (NetWare).

This utility can only be used on a PC that can be connected to the network with TCP/IP or IPX/SPX.

This utility must be used on a PC that is located on the same segment as the printer.

1. Insert the DVD-ROM into the DVD-ROM drive. The Setup Utility starts automatically. If it does not start, double-click **\setup.exe** (in the root directory) on the DVD-ROM.
2. If you agree to the User Licence Agreement, click **Next**.
3. Select the appropriate language.
4. Navigate to and select **Network Card Setup**.

5. Select **Install Network Card Setup** link.
6. Select your language.
7. Select **Oki Device Quick Setup** and follow the on-screen instructions.



8. When the settings are correct, click **Execute**. The new settings are transmitted to the network card but it still operates with pre-transmission settings.
9. Click **Finish** to validate the new settings.
10. Switch the printer off for 15 seconds and on again.

USING ADMINMANAGER

NOTE

Not all utilities, features or protocols are supported by every operating system. Please check with your support website for latest information.

AdminManager is a powerful Microsoft Windows-based utility to configure all network interface functions easily and intuitively via a graphical user interface.

Configuration requires a PC with a supported Windows operating system (see [page 8](#)), running TCP/IP or IPX/SPX (NetWare).

This utility can only be used on a PC that can be connected to the network with TCP/IP or IPX/SPX and must be used on a PC that is located on the same segment as the printer.

INSTALLATION

1. Insert the DVD-ROM into the DVD-ROM drive. The Setup Utility starts automatically. If it does not start, double-click **\setup.exe** (in the root directory) on the DVD-ROM.
2. Select the appropriate language.
3. Navigate to and select **Network Card Setup**.
4. Select **Install Network Card Setup** link.
5. Select your language.

6. Select **Oki Device Standard Setup**.



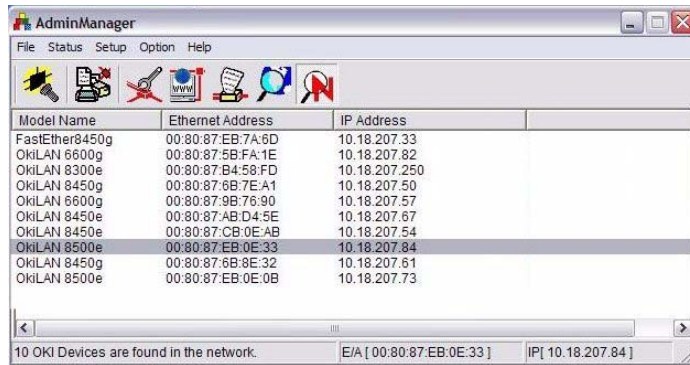
7. If you want to install AdminManager on to your local drive, select **Install and Execute**. Otherwise, select **Execute from CD-ROM**. Follow the on-screen instructions.





8. To run AdminManager, check **Yes** for **Do you wish to execute AdminManager?** and click **Finish**. Otherwise check **No** and click **Finish**.

INTERFACE

Select **Start > Programs>Oki Setup Utility > Admin Manager.**



MENU	ITEM	FUNCTION
File	Search	Search printers in your network and list all printers.
Status	System Status	Displays current NIC configuration. Configuration data can be saved as log file. 
	List of Configuration Items	Displays current NIC configuration. Configuration data can be saved as log file. 
Setup	Oki Device Setup	Configure the network interface (NIC).
	Setup by HTTP	Launch the default browser in your environment to access the selected printer's web page.
	Setup by TELNET	Launch TELNET application in your environment to access the selected printer's TELNET port.
	Create NetWare Queue	Create a NetWare queue. <i>Note: Only visible when using Netware.</i>
	Delete NetWare Object	Delete NetWare object. <i>Note: Only visible when using Netware.</i>
	Reset	Reset the selected network interface card.
	Test Print	Print self-diagnostic test pages.
	IP Address Setup	Set static IP address of network interface card manually.

DEVICE SETUP

NOTE

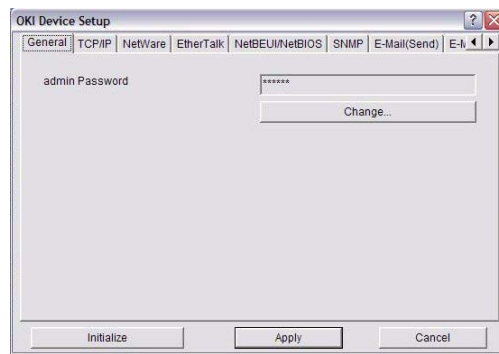
Not all utilities, features or protocols are supported by every product. Please check with your support website for latest information.

Device Setup allows you to configure the network interface. Type the admin password (default value is **aaaaaa**) to configure. Remember that the password is case sensitive. Device Setup contains details for the following tabs:

- > General
- > TCP/IP
- > NetWare
- > EtherTalk
- > NetBEUI/NetBIOS
- > SNMP
- > E-Mail(Send)
- > E-Mail(Receive)
- > SNTP
- > Maintenance
- > SSL/TLS
- > IEEE 802.1x

The following section explains each tab's functionality.

General Tab

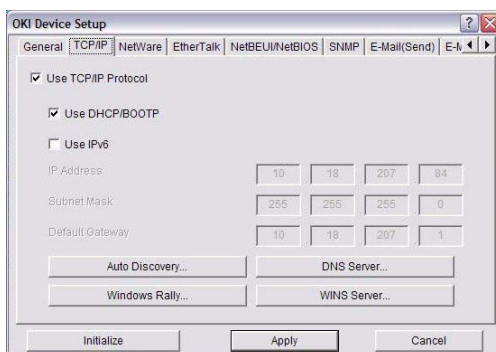


This allows you to set or change the root password used for Admin Manager, TELNET and FTP.

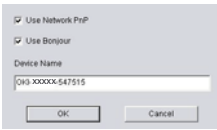





ITEM	EXPLANATION
Change root password	You can set/change the root password for AdminManager, TELNET and FTP.

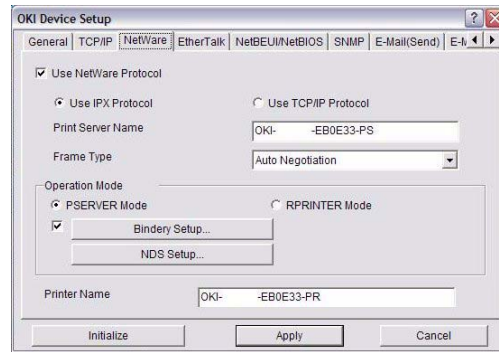
TCP/IP Tab



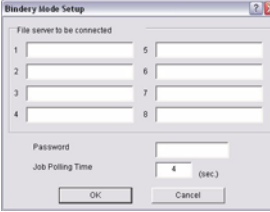
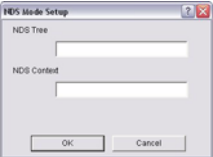
This allows you to configure TCP/IP related items.

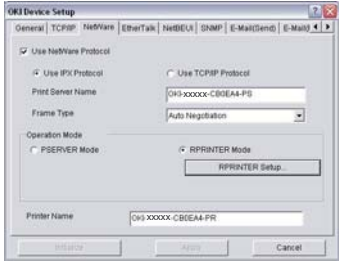
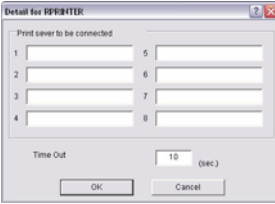
ITEM	EXPLANATION										
Use TCP/IP Protocol	Set TCP/IP protocol as enabled/disabled.										
	<table border="1"> <tr> <td>Use DHCP/BOOTP</td> <td>Check this item if IP address, subnet mask, default gateway and IP addresses for DNS primary server and secondary servers are retrieved from the DHCP or BOOTP server. Otherwise, leave unchecked.</td> </tr> <tr> <td>Use IPv6</td> <td>Enables IPv6.</td> </tr> <tr> <td>IP Address</td> <td>Set the IP address of the selected network interface card.</td> </tr> <tr> <td>Subnet Mask</td> <td>Set the subnet mask of the selected network interface card.</td> </tr> <tr> <td>Default Gateway</td> <td>Set the default gateway of the selected network interface card.</td> </tr> </table>	Use DHCP/BOOTP	Check this item if IP address, subnet mask, default gateway and IP addresses for DNS primary server and secondary servers are retrieved from the DHCP or BOOTP server. Otherwise, leave unchecked.	Use IPv6	Enables IPv6.	IP Address	Set the IP address of the selected network interface card.	Subnet Mask	Set the subnet mask of the selected network interface card.	Default Gateway	Set the default gateway of the selected network interface card.
	Use DHCP/BOOTP	Check this item if IP address, subnet mask, default gateway and IP addresses for DNS primary server and secondary servers are retrieved from the DHCP or BOOTP server. Otherwise, leave unchecked.									
	Use IPv6	Enables IPv6.									
	IP Address	Set the IP address of the selected network interface card.									
	Subnet Mask	Set the subnet mask of the selected network interface card.									
Default Gateway	Set the default gateway of the selected network interface card.										
Auto Discovery	Configure items related to Network PnP Use to select Network PnP and Bonjour, and to set device name. 										
DNS Server...	Set IP addresses for DNS primary and secondary servers. 										
Windows Rally...	Use WSD Print Use LLTD check to enable/disable. 										
WINS Server...	Set IP addresses for WINS primary and secondary servers and to enter scope ID. 										

NetWare Tab

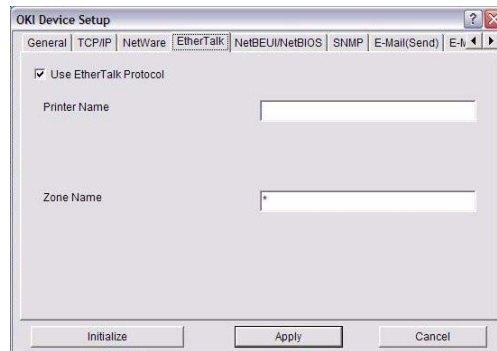


This is where you can configure NetWare related items.

ITEM	EXPLANATION	
Use NetWare Protocol	Set NetWare protocol as enabled/disabled.	
Use IPX Protocol / Use TCP/IP Protocol	Set protocol to use.	
Print Server Name	Set Print Server name.	
Frame Type	Set primary NetWare frame type.	
Operation Mode	Set NetWare mode.	
Check box beside Bindery Setup	Check if you want to use the Bindery mode and Bindery Setup button becomes available. If it is unchecked, the button is greyed out.	
Bindery Setup	Configure items related to Bindery mode. In this dialogue box, the following items can be configured: 	
	Password	Set password for Print Server.
	Job Polling Time	Set print job polling interval in seconds.
NDS Setup	Set NDS tree and context where Print Server was created. 	

ITEM	EXPLANATION		
RPRINTER Setup	<p>Available if you select RPRINTER mode in Operation Mode.</p> 		
	<p>By selecting the RPRINTER button, this is displayed: Here you can specify print servers to which the printer can be connected.</p> 		
	<table border="1"> <tr> <td>Time Out</td> <td>Set duration from the last data's arrival to freeing of the port in seconds.</td> </tr> </table>	Time Out	Set duration from the last data's arrival to freeing of the port in seconds.
Time Out	Set duration from the last data's arrival to freeing of the port in seconds.		
Printer Name	Set the NetWare printer object name.		

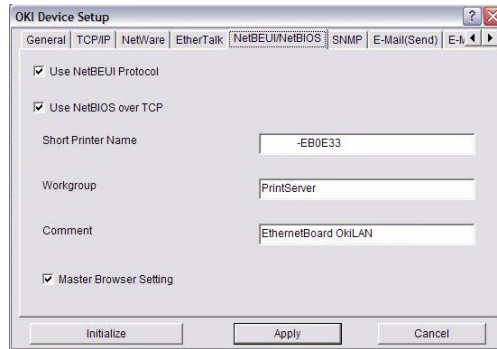
EtherTalk Tab



This allows you to configure EtherTalk related items.

ITEM	EXPLANATION
Use EtherTalk Protocol	Set EtherTalk protocol to enabled/disabled.
Printer Name	Set EtherTalk Printer object name.
Zone Name	Set the zone name to which the printer belongs.

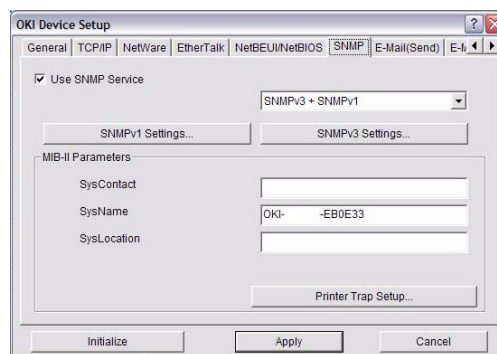
NetBEUI/NetBIOS Tab



This allows you to configure NetBEUI/NetBIOS related items.


ITEM	EXPLANATION
Use NetBEUI Protocol	Set NetBEUI protocol to enabled/disabled.
Use NetBIOS over TCP	Set NetBIOS over TCP to enabled/disabled.
Short Printer Name	Set a name for the printer.
Workgroup	Set a work group name to which the printer belongs.
Comment	Set the comments for the printer (optional).

SNMP Tab

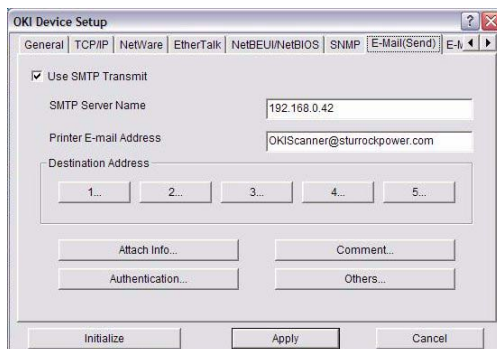


This allows you to configure SNMP related items.

ITEM	EXPLANATION
Use SNMP Service	ENABLE or DISABLE the SNMP protocol.
SNMPV1 + V3	Select from the drop-down box which (or both) of these to use.
SNMPV1 Settings	SNMP Read & Write Community. Enables these passwords to be changed.
SNMPV3 Settings	Enables Authorisation and Privacy (Encryption) setup to be done.
SysContact	Set SysContact (printer manager) name.
SysName	Set SysName (printer model name).
SysLocation	Set SysLocation (the location where the printer is installed).

ITEM	EXPLANATION	
Printer Trap Setup...	<p>By selecting the button, the following dialogue box is displayed:</p> <p>In the dialogue box, the following items can be configured:</p> 	
	Printer Trap Community Name	This community name is assigned to outgoing printer status traps such as off-line, paper out, etc.
	TCP#1–5	Set the IP addresses to which a Trap packet will be sent. You can set up to five IP addresses, with the following details: Printer Reboot Receive Illegal Online Offline Paper Out Paper Jam Cover Open Printer Error
	IPX	Set node address and network address to which a Trap packet will be sent. In the dialogue box, the following items can be configured: Online Offline Paper Out Paper Jam Cover Open Printer Error

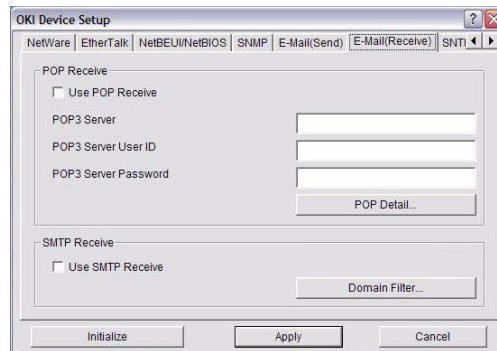
E-Mail (Send) Tab



ITEM	EXPLANATION	
Use SMTP Transmit	Check to enable SMTP.	
SMTP Server Name	Enter name of the SMTP server.	
Printer E-Mail Address	Enter the printers e-mail address.	
Destination Address 1 - 5	Set the following parameters:	
	Destination Address	Set E-Mail address to which email should be sent.
	Notify Mode	Select PERIOD or EVENT.
When PERIOD is selected:		
Check time	Used to set the interval at which the selected events are checked. An e-mail will be sent at the specified interval for each event selected.	
Period mode	Set ENABLE (ON)/DISABLE (OFF) for the events listed.	
When EVENT is selected:		
	Event Mode	Select: ENABLE (ON), DISABLE (OFF) or IMMEDIATE (NOWAIT) for the listed events. If ENABLE (ON) is selected, the check interval can be set (in hours and intervals of 15 mins).
Attach Info...	Select whichever information is to be included in the e-mail.	
Comment...	Set up to four lines of text to be included with the e-mail as comments.	
Authentication...	Used to set the following security information:	
	SMTP Authentication Method	Check to Enable SMTP authentication.
	User ID	Set the User ID for Authentication.
	User Password	Set the User Password for Authentication.

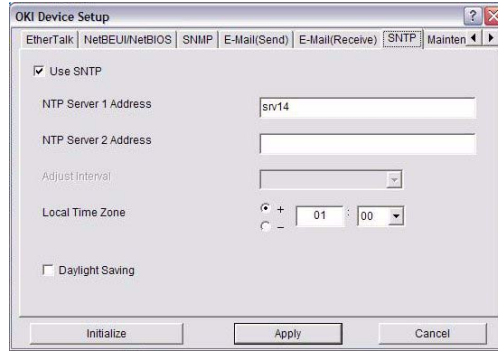
ITEM	EXPLANATION	
Others...	Set the following:	
	SMTP Port Number	Set the SMTP port number (default is 25).
	Reply to address	Set the E-mail address used for the [Reply to] field in the mail header.

E-mail (Receive) Tab



ITEM	COMMENTS	
Use POP Receive	Enable/disable receiving E-Mail via POP3.	
POP3 Server	Set the IP address or host name of the POP3 server.	
POP3 Server UserID	Set User ID for POP3 server.	
POP3 Server Password	Set a password for the POP3 server.	
POP Detail...	Set the following:	
	Use APOP	Select if you want to use APOP.
	POP3 Port Number	Set the port number for APOP (default is 110).
	Mail Polling Time	Set interval to retrieve E-Mail(s) from the POP3 server. Selectable values, OFF, 1min, 5min (default), 10min, 30 min, 60 min.
Use SMTP Receive	Enable/disable SMTP receive.	
Domain Filter...	Set the following:	
	Use Domain Filter	Enable/disable domain filtering.
	Filter Policy	Select ACCEPT (the default) or DENY.
	Domain Filter	Define up to five domain filters.

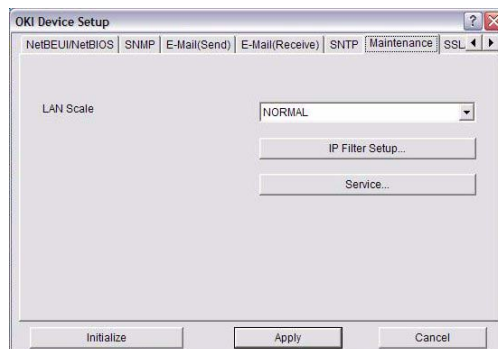
SNTP Tab



In this Tab, you can configure SNTP related items.

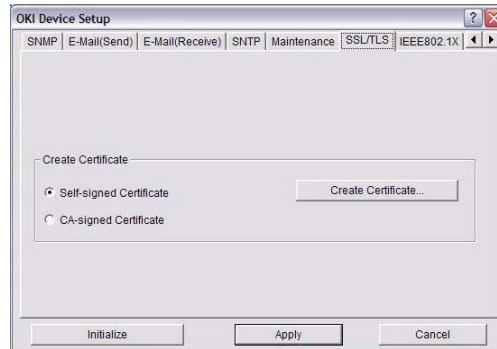
ITEM	COMMENTS
Use SNTP	Enable/disable SNTP (Simple Network Time Protocol).
NTP Server 1 Address	Set the IP address or host name for NTP Server 1.
NTP Server 2 Address	Set the IP address or host name for NTP Server 2.
Adjust Interval	Set the interval for sending time update requests to the server. Select 1 hour (the default), 12 hours or 24 hours.
Local Time Zone	Set the local time zone from -12:00 to +13:00. Minute interval is selectable from 00 (the default), 15, 30 or 45.
Daylight Saving	When this is selected, one hour is added to the local time.

Maintenance Tab



ITEM	COMMENTS	
LAN Scale	Select NORMAL (the default) or SMALL. Note: For small scale networks (with no routing), choose the SMALL setting. For more complex networks choose NORMAL .	
IP Filter Setup...	The following items can be configured:	
	Use IP Filter	Enable/disable IP Filtering. Default is disabled.
	Admin IP Address	Set the administrator IP address.
	IP Address Range	Set up to 10 IP Filter address ranges: IP Filter Range 1 through IP Filter Range 10 .
	Printing	Enable/disable printing of the specified IP address range. Default is disabled.
	Configuration	Enable/disable changing IP address ranges. Default is disabled.
Service...	The following features can be selected by clicking their check box. Use TCP/IP Protocol Use NetBEUI Protocol Use NetBIOS over TCP Use NetWare Protocol Use EtherTalk Protocol Use FTP Service Use Telnet Service Use Web Service Use IPP Service Use SNMP Service Use SMTP Transmit Use POP3 Protocol Use SNTP Use encrypted communication for configuration data	

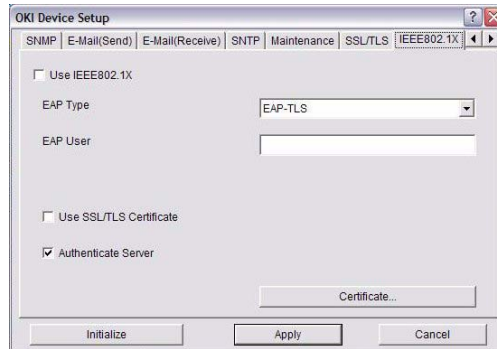
SSL/TLS Tab



ITEM	COMMENTS	
Encryption Strength	Set the strength of encryption: Strong = highest security, slowest speed Standard = medium security, medium speed Weak = least security, fastest speed	
Self-signed Certificate	For IPP encryption within an organisation's internal network (intranet).	
Create Certificate...	When Self-signed Certificate is selected, the following items are configured:	
	Common Name	The printer's IP Address appears here.
	Organisation	Enter the name of your organization.
	Organisation Unit	Optional. Allows you to enter a subdivision or department name.
	Locality	Enter the name of the city where the organization is located.
	State/Province	Enter the state or province where the organisation is located.
	Country/Region	Enter the country or region where the organisation is located.
	Key Exchange Method	Select RSA (the default) or Diffie-Hellman(DSS).
	Key size	Select 512, 1024 (the default), or 2048 bits.
Term of Validity	Enter a starting and ending date (month/date/year) for which the certificate is valid.	

ITEM	COMMENTS	
CA-signed Certificate...	Used for web encryption to provide security when printing over the internet. Requires an outside certification service which must be purchased separately.	
Create Certificate...	When CA-signed Certificate is selected, the following items are configured:	
	Common Name	The printer's IP Address appears here.
	Organisation	Enter the name of your organisation.
	Organisation Unit	Optional. Allows you to enter a subdivision or department name.
	Locality	Enter the name of the city where the organization is located.
	State/Province	Enter the state or province where the organisation is located.
	Country/Region	Enter the country or region where the organisation is located.
	Key Exchange Method	Select RSA (the default) or Diffie-Hellman(DSS).
	Key size	Select 1024 (the default) or 2048 bits.

IEEE802.1X Tab

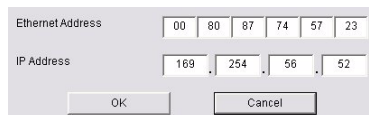


ITEM	COMMENTS	
Use IEEE802.1X	Enable/disable.	
EAP Type	The following Extensible Authentication Protocols can be configured:	
	EAP-TLS	Selects Extensible Authentication Protocol - TLS.
	PEAP	Selects Protected Extensible Authentication Protocol.
EAP User	Enter EAP User name.	
Use SSL/TLS Certificate	Enable SSL/TLS certification.	
Authenticate server	Enable Server Authentication.	
Certificate	Client certificate	File: (User can specify). Password: (User can specify). Options to Import, Delete, View.
	CA certificate	File: (User can specify). Password: (User can specify). Options to Import, Delete, View.

IP ADDRESS SETUP

If you only use TCP/IP and the printer has not yet been configured, occasionally it may not be displayed on AdminManager. You can configure the IP address of the printer by this function.


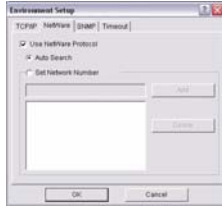


1. Select **IP Address Setup** from the **Setup** menu.
2. Set **Ethernet Address** and **IP Address** then select **OK**.



The Ethernet Address (MAC address) is displayed on the configuration map, refer to ["Configuration settings" on page 7](#).

OPTION MENU

In the **Option** menu, the following item can be selected:

ITEM	EXPLANATION
Use TCP/IP Protocol	If this item is selected, AdminManager uses TCP/IP protocol to search/configure network interface cards.
Use IPX/SPX Protocol	If this item is selected, AdminManager uses IPX/SPX protocol to search/configure network interface cards.
Environment Setup	<p>TCP/IP Tab</p> <p>Set broadcast addresses that are used to search printers using the TCP/IP protocol. If Use TCP/IP protocol is unchecked, the search will not be carried out using TCP/IP.</p> 
	<p>NetWare Tab</p> <p>Set network addresses that are used to search printers via NetWare protocol. If there any many NetWare file servers on your network, specify the network address to which the network card belongs. If Use NetWare protocol is unchecked, the search will not be carried out using NetWare, but if Auto Search is selected, AdminManager will search all networks that AdminManager can detect.</p> 
	<p>SNMP Tab</p> <p>Obtain the printer name via SNMP - Select.</p> <p>Enter Community name.</p> <p>Add and Delete.</p> 
	<p>TimeOut Tab</p> <p>Search Every: Set response waiting time from a network card in seconds.</p> <p>Time Out: Set time out between AdminManager and the network interface card in seconds.</p> <p>Retry: Set how many times the retry will be carried out between AdminManager and the network interface card.</p> 

HELP MENU

In the Help menu, **About** is available as well as revision information for **AdminManager**.

USING A WEB BROWSER

If the printer is connected to the network using TCP/IP, its settings and the printer menu settings can be configured using a Web browser. Refer to the relevant manuals for details of how to launch and use the browser.

MICROSOFT INTERNET EXPLORER

1. Select **Internet Options** in the **Tools** menu.
2. Click on the **General** tab and click **Settings** in **Temporary Internet files**.
3. Select **Every visit to the page** in **Check for newer versions of stored pages**.

DEFAULT USER NAME AND PASSWORD

To apply configuration changes using a Web browser, you will be prompted for a username and password. The username is **admin** and the default password is **aaaaaa**.

The admin password can be changed to allow you to configure the printer by using a Web browser/TELNET/AdminManager. To change the password, select **Password Configuration** in the Maintenance tab and follow the on-screen instructions.

ADJUSTING PRINTER SETTINGS

The network addresses used in this manual are shown as examples only. Network addresses used in your installation must be generated from your own network.

1. Configure the IP Address, Subnet Mask and Gateway for the network card. Launch the Web browser, enter the IP Address of the network interface card in **Address (Location/Position)** and press the **Enter** key.
2. Select a tab and items to be changed in the left frame. You need to log in as **admin** to be able to configure all items. Non-admin users cannot configure all items.

USING TELNET

CAUTION!

Please ensure a valid IP address for your network environment is used. Use of an incorrect IP address can cause serious problems on your network.

EXAMPLE TELNET CONFIGURATION

TELNET requires the print server to have a valid IP address configured. If the NIC already has an IP address configured, skip steps 1 to 3 below.

NOTE

The method of configuring commands may differ between workstations. Refer to the workstation's manual.

1. Use the PING command to confirm the connection with the network card.

Example

For IP address 172.168.20.127:

```
ping 172.168.20.127
```

If there is no reply, there is a problem with the configuration of the IP address (the IP address has been already set manually or by the DHCP/RARP server), or with the network. Reset the network interface card settings to the default and try to set a temporary IP address. If you still have the problem after resetting the network interface card, consult the network manager.

2. Login to the network card using TELNET.

Example

For IP address 172.168.20.127

```
telnet 172.168.20.127
```

You should see a sequence similar to the following example:

```
Trying 172.168.20.127
Connected to 172.168.20.127
Escape character is '^]'.
EthernetBoard 8450e TELNET server (Ver 01.01).
login: admin
'admin' user needs password to login.
password:
User 'admin' logged in.
No. MENU (level.1)
-----
1:Status / Information
2:Device Config
3:Network Config
4:Security Config
5:Maintenance
99:Exit setup
Please select (1-99)?
```

3. Enter the number of the item to be changed.

The details window for that item displays.

4. When the configuration is complete, select **Exit Setup** to save your change. To exit without saving your modification, select **Quit**.
5. Turn the machine off and on again.

NOTE

The network card continues to use pre-transmission settings until the machine is turned off and back on again.

USING SNMP

NOTE

Not all utilities, features or protocols are supported by every product. Please check with your support website for latest information.

The machine and network card can be managed via a standard SNMP management station. The network card supports SNMPv1, MIB-II, Oki Data Private MIB and SNMP V3. In order for the machine to be managed correctly from an SNMP management station, the Oki Data Private MIB needs to be added to that management station. Please refer to the SNMP manager documentation for information on how to do this.

NOTE

The Oki Data Private MIB file can be found in the Misc\ASN folder on the DVD-ROM or support website. Please refer to the readme file for further information.

The printer's trap address can be set in five places using TCP/IP and in one place with IPX. Printer trap settings can be made with TELNET and a Web browser.

MANAGEMENT UTILITY — PRINTSUPERVISION

NOTE

Not all utilities, features or protocols are supported by every product. Please check with your support website for latest information.

PrintSuperVision is a Windows server application designed for managing and monitoring printing devices connected to a network. The core application is server-based and is accessible from any browser enabled device connected to the network.

For full details of how to install and use PrintSuperVision, please refer to the PrintSuperVision Configuration Guide which is available on the support website.

PRINTING UTILITY — OKI LPR

NOTE

Not all utilities, features or protocols are supported by every product. Please check with your support website for latest information.

The Oki LPR Utility is a utility that allows printing data to printers connected to the network via TCP/IP.

The utility is for those Oki printers which support TCP/IP and redirects printing data to the lpr port of the specified IP address.

It is an alternative method of connecting printers instead of using the Microsoft TCP/IP port.

SYSTEM REQUIREMENTS

Operating Systems with TCP/IP support and Oki printers that support TCP/IP.

INSTALLING THE OKI LPR UTILITY

NOTE

Some Operating Systems require administrator privileges in order to make changes.

1. Set up the printer driver by designating the output destination to Local Printer (LPT1:). For information on setting up your printer driver, see the Printing Guide.
2. Insert the DVD-ROM into the DVD-ROM drive. The Setup Utility starts automatically. If it does not start, double-click **setup.exe** on the DVD-ROM.
3. Select **Software Utilities**.
4. Select **Install OkiLPR**.
5. Follow the on-screen instructions.
6. Click **Next** when the **Welcome** screen is displayed.
7. Verify **Destination Folder** and **Spool Folder** and click **Next**.
8. Check **Register in Startup** if you want automatic startup as Windows boots up. Check **Launch as minimized** if you want to startup in the Icon state and click **Next**.
9. Verify the program folder name and click **Next**. The installation starts.
10. When the installation ends, the **Setup complete** screen is displayed. Check **Yes, I want to launch Oki LPR Utility now** and click **Finish**. Check **Yes, I want to view the ReadMe File** if you want to read **Readme**. The OkiLPR utility will start.
11. You may be asked whether it is OK to change write permissions for the spool directory. Click **Yes** to allow the utility to be correctly installed.
12. Select **Add Printer** on the **Remote Print** menu.
13. Click **Discover...** to search for the IP address of a suitable printer on your network.
14. Highlight the printer you will use and click **OK**.
15. If your printer is not discovered, click **Cancel** and you can type the IP address directly at **IP Address:**.
16. Enter an IP address at **IP Address** and click **OK**. A printer is added to the main window.

Refer to the On-line Help for information on how to use the utility.

UNINSTALLATION

1. Stop the OkiLPR Utility.
2. Select **Start > Programs>Okidata>OkiLPR Utility > Uninstall OkiLPR Utility**.
You may find this under **Start > All Programs** in Windows XP.
3. Click **Yes** when the Confirm File Deletion dialogue is displayed. Deletion of the OkiLPR utility starts.
4. When the deletion has finished, the Uninstall Complete screen is displayed. Click **OK**.

If a file that has been added after installation exists in the folder to install the OkiLPR utility or the folder to spool, you cannot delete the folder. Delete any unwanted files before running Uninstall OkiLPR Utility.

MICROSOFT WINDOWS

OVERVIEW

This chapter provides guidelines on how to print over the network from various Microsoft Windows platforms. There are numerous ways of printing from Windows and the exact set-up will vary depending upon your environment. There are also numerous versions of Windows, which can be configured as either a client, server or both.

Although there are many variants of Windows, the principles of network printing are the same. Microsoft provides on-line help with all of their operating systems and this is a good reference point for the exact details of each configuration option within Windows.

NOTE

Not all utilities, features or protocols are supported by every operating system. Please check with your support website for latest information.

INSTALLING A NETWORK PRINTER

There are two ways to set up a Network Printer:

- > Install automatically, using the *Oki Driver Installer*
- > Install it yourself using the *Add Printer Wizard*

USING THE OKI DRIVER INSTALLER

The Oki Driver Installer program searches for compatible printers on the Network, then installs and configures the printer drivers with the correct port settings automatically.

Using the Oki Driver Installer program, you can install to the following connected printer types:

1. Locally connected printers
 - > USB port
 - > Parallel port (if available)
2. Networked printers
 - > Directly connected (peer-to-peer) printers via TCP/IP

The Microsoft standard TCP/IP is installed and configured to use Port 9100 with the printer's IP address.

- > Printers not directly connected, but shared via a PC (Client Server)

Why use the Oki Driver Installer?

- > Automatically discovers printers on the Network (TCP/IP)
- > Installs driver and correctly assigns the appropriate port and IP address
- > Allows easy configuration and sharing of the printer with other Network users
- > Automatically configures the printer driver with the appropriate hardware device options such as a storage device, additional paper trays, etc. (via the Oki Network Extension software)

USING THE ADD PRINTER WIZARD

Method summary:

The following table shows the different ways to connect to the printer (port types).

	WINDOWS 2000	WINDOWS XP	WINDOWS VISTA	WINDOWS SERVER 2008
Windows standard TCP/IP	YES	YES	YES	YES
Oki LPR	YES	YES	NO	NO
IPP	YES	YES	YES	YES
NetBEUI	YES	YES	NO	NO

About the different methods

Windows standard TCP/IP port

The standard TCP/IP port simplifies connecting to remote printers using the TCP/IP protocol. A computer that acts as a print server must run the TCP/IP protocol in order to print.

Can be configured to use either LPR or RAW (e.g. Port9100).

OkiLPR

Used to connect your printer over TCP/IP using an LPR port.

OkiLPR also includes useful tools enabling you to download PS and PRN files directly to your printer and automatically redirect jobs to other printers on the network.

IPP

The IPP (Internet Printing Protocol) defines a standard protocol for printing as well as managing print jobs, media, resolution, etc.

NetBEUI

NetBEUI (NetBios Extended User Interface) is a protocol that was designed for use in small workgroups or LANs. Within Windows NetBEUI is used for file and printer sharing between computers. It provides a simple method of printing, but it does have limitations, and is not as robust as TCP/IP or IPX. Typically it is employed in small business or home networks.

NETWORK PRINTER IP ADDRESS CONFIGURATION

Use the Standard Set-up Utility to configure the IP Address, Subnet Mask and Gateway.

NOTE

It will not be necessary for printers connected to a network using DHCP to use this setup method.

Some steps may not display depending on the network protocols installed.

1. Connect the machine to the network and turn on.
2. Insert the DVD-ROM into the DVD-ROM drive. The Setup Utility starts automatically. If it does not start, double-click **\setup.exe** (in the root directory) on the DVD-ROM.
3. If you agree to the User Licence Agreement, click **Next**.
4. Select the appropriate language.
5. Navigate to and select **Network Card Setup**.
6. Select the **Install Network Card Setup** link.
7. Select your language.
8. Select **Oki Device Quick Setup** and follow the on-screen instructions.



9. Select the appropriate network card, using the Ethernet address to identify it, and click **Next**.

The Ethernet Address (MAC address) is displayed on the configuration map, refer to ["Configuration settings" on page 7](#).

Using TCP/IP protocol

When using lpr in UNIX and other TCP/IP environments, please select **Yes**. To use in a TCP/IP environment, an IP address should be assigned to the Ethernet card.

If **Yes** has been selected and TCP/IP is the only working protocol and the IP address has not already been assigned, you can either obtain an IP address automatically or assign an IP address.

When **Obtain an IP address automatically** is selected, the device IP address will be automatically assigned by the DHCP server. In an environment without a DHCP server, please assign the IP address manually.

If you are *manually* assigning an IP address, you need to enter:

- > An IP address
- > Subnet mask
- > Gateway address

10. Click **Next**.

Using Bonjour protocol

Bonjour is the preferred protocol for printing data from the Macintosh environment.

Using NetBEUI protocol

Using NetBEUI makes it easy to manage your Oki product and print within the network environment of Windows.

11. When the settings are correct, click **Execute**. The new settings are transmitted to the network card but it still operates with pre-transmission settings.
12. Click **Finish** to validate the new settings.
13. Switch the printer off for 15 seconds and on again.

Now that both Windows and the printer have been configured to use TCP/IP, the next step is to configure Windows to print to the network printer.

NETBEUI PROTOCOL

NETWORK PRINTER SETTINGS

There are two configurable items under NetBEUI within the printer. These can be configured using the standard set-up utility described in ["Device setup" on page 12](#).

COMPUTER NAME	NAME ASSIGNED TO THE PRINTER
Workgroup	PrintServer ^a
Comment	User definable description

- a. Although the workgroup name can be changed, it is recommended that it remains as PrintServer.

Although there are some differences in configuration options between the various Windows platforms, the procedure for printing using NetBEUI is the same.

Please ensure the NetBEUI protocol has been installed in Windows. This can be confirmed by checking the network settings. If NetBEUI has not been installed please refer to the section below.

The relevant Windows installation CD-ROM may be required and you should follow the on-screen dialogue box prompts.

WINDOWS XP

Although you can install the NetBEUI protocol into Windows XP, it may not be supported. You should be able to use NetBEUI on LAN connections although you will not be able to use this on a Remote Access Service Connections.

1. In the **Start** menu, select **Settings > Control Panel**.
2. Double-click on **Network Connections**.
3. Right-click the adapter you wish to add NetBEUI to and then click **Properties**.
4. On the **General** tab, select **Install**.
5. Select **Protocol** and then **Add**.
6. Select **Have Disk** and insert your Windows XP CD-ROM, open the *Valueadd\msft\net\netbeui* folder, select the *Netbf.inf* file and then click **Open**.

Now the printer has been configured and NetBEUI has been installed, you can configure Windows to print over the network.

WINDOWS VISTA

NetBEUI is not supported by Windows Vista.

PRINTER DRIVER CONFIGURATION

In the following example, the printer has been configured as follows:

Computer Name:	OL07DB85
Workgroup:	PrintServer
Comment:	Ethernet Board 8450e

1. Set up the printer driver as the default local printer.
2. In the **Start** menu, select **Settings > Printers**.
3. Select the relevant printer driver, then **Properties**.
4. Click on the **Details** tab in the printer driver.
5. Select **Add Port**.
6. Select **Network** and click **Browse**.
7. Double-click **Entire Network**, **PrintServer** and **OL07DB85**.
8. Select **Prn1** and click **OK**.
9. Check that **Network** is selected and click **OK**.
10. Select **Apply** and **OK** to close Properties.

Printing can be carried out using your application software.

- > The Master Browser function manages machine information from the same Workgroup, and replies to summary requests from other workgroups.
- > The Master Browser function operates only if the Workgroup name is PrintServer.
- > The Master Browser function can only manage this network card. If the PrintServer name is put into another Workgroup, the network card will not be able to find it on the network.
- > A maximum of eight Networks can be managed by the Master Browser function.
- > Printing cannot be carried out and an error message appears when jobs from other users (including other protocols) are being printed.

MAC OS X

OVERVIEW

This section of the guide is for administrators and it should be read in conjunction with the relevant Mac OS X manual. Please ensure your Mac has the latest OS X updates installed.

To get the best results from your printer, install the Postscript Printer Description (PPD) file supplied with your printer and use this to customise the Apple PostScript driver that is built in to the OS X. Features provided by the PPD file include:

- > Supported paper types
- > Paper trays
- > Printer resolution
- > Printer colour matching

NOTE

The PPD file must be installed using the Oki Driver Installer to ensure that all essential files are copied.

SETTING UP A NETWORK PRINTER

1. If the printer does not already have an IP address, use the Printer Setup Utility to assign an IP address. See [“The printer setup utility interface” on page 37](#).

To do this, you will need to know the printer's MAC address. This can be found on the print server's network summary printout. See [“Configuration settings” on page 7](#).

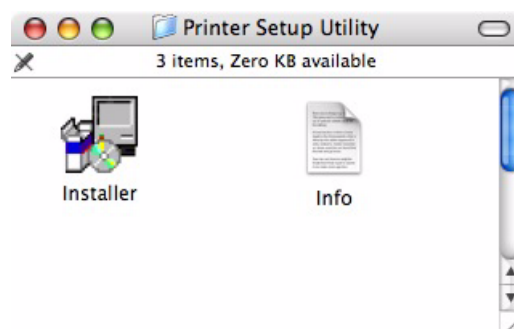
2. Install the printer driver software. This copies the printer driver files to the correct location on your Mac OS X system.
3. Make a connection to the printer by USB, TCP/IP, Rendezvous or AppleTalk. See [“Connecting to your printer” on page 43](#).
4. If required, enable hardware device options such as additional paper trays or a storage device. See [“Configuring printer hardware options” on page 47](#).

PRINTER SETUP UTILITY

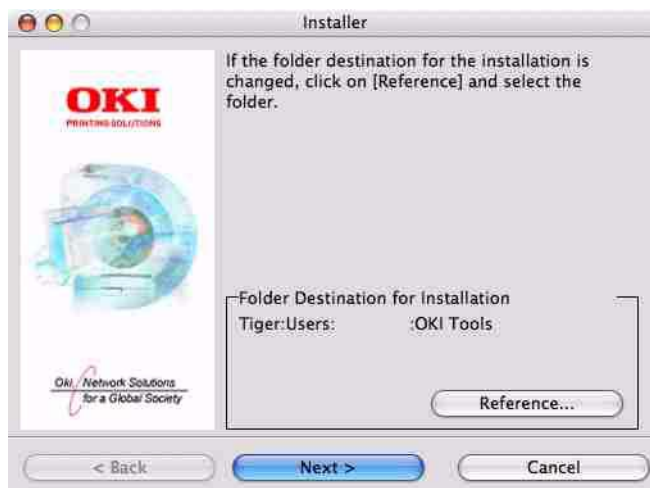
The Printer Setup Utility is a powerful MacOS-based utility for configuring all print server functions using a graphical user interface.

INSTALLING THE PRINTER SETUP UTILITY

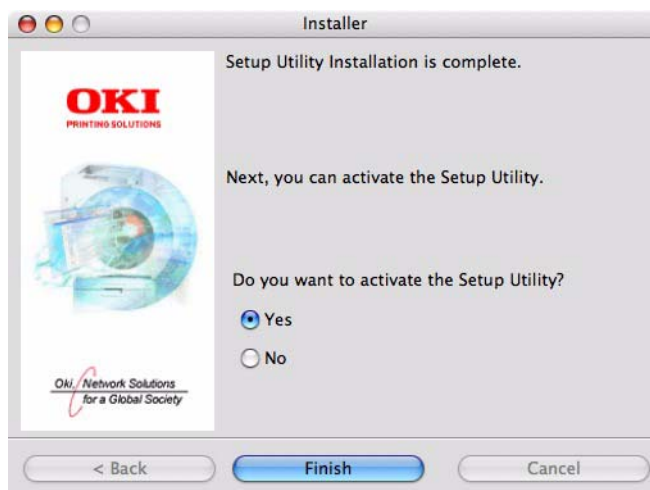
1. Insert the DVD into the DVD-ROM drive.
2. Open the Printer Setup Utility folder and double-click **Installer**.



3. Select the destination directory, then click **Next**.



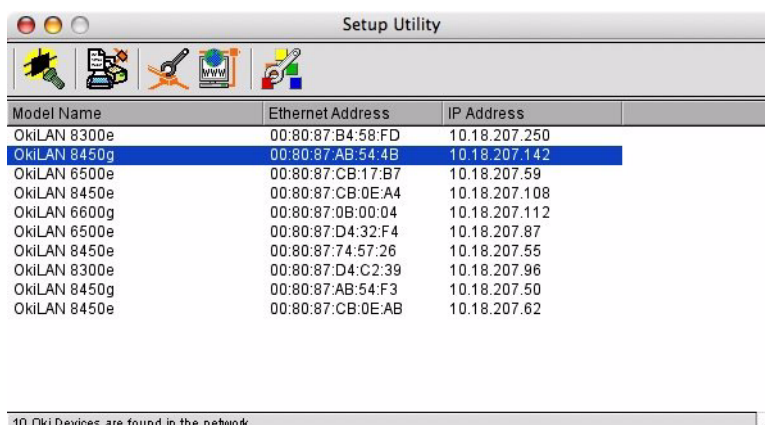
4. Ensure the **Yes** option is selected to activate the utility, then click **Finish**.



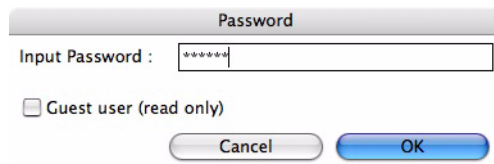
THE PRINTER SETUP UTILITY INTERFACE

The Printer Setup Utility auto-discovers Oki compatible network cards.

1. Select the correct printer NIC to configure and choose **Setup menu > Oki Device Setup**.



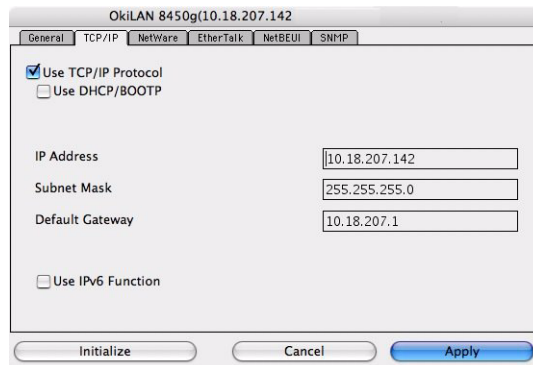
- At the prompt, enter the Admin password.



A dialog box titled "Password" with a text input field containing "*****". Below the input field is a checkbox labeled "Guest user (read only)". At the bottom are "Cancel" and "OK" buttons.

NOTE
The default admin password is **aaaaaa**.

- Select the TCP/IP tab and assign your machine's IP address.
- Click **Apply**.



A configuration window titled "OkiLAN 8450g(10.18.207.142)" with tabs for "General", "TCP/IP", "NetWare", "EtherTalk", "NetBEUI", and "SNMP". The "TCP/IP" tab is selected. It contains checkboxes for "Use TCP/IP Protocol" (checked) and "Use DHCP/BOOTP" (unchecked). Below are input fields for "IP Address" (10.18.207.142), "Subnet Mask" (255.255.255.0), and "Default Gateway" (10.18.207.1). There is also a checkbox for "Use IPv6 Function" (unchecked). At the bottom are "Initialize", "Cancel", and "Apply" buttons.

MENU OPTIONS

Discover Printers

Locates and lists all printers in your network which have an Oki compatible network card installed.

System status

Displays the network card summary details.

Oki device setup

Use this to configure the network card settings (requires Admin password).

General Tab



The General tab allows you to change the admin password.

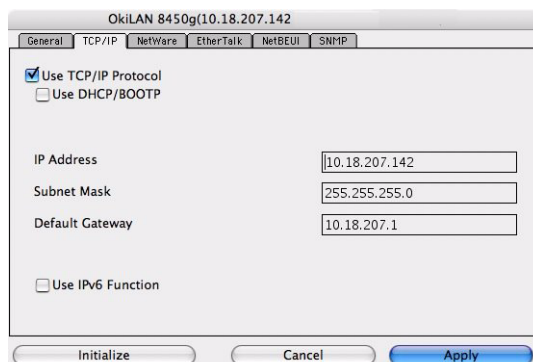
1. Click **Change**.
2. Enter the current value, then enter the new value and re-enter it under **Confirm ...**

NOTE

The default admin password is **aaaaaa**.

3. Click **OK**.
4. Click **Apply**.

TCP/IP Tab



ITEM	COMMENTS
Use TCP/IP Protocol	Enable/disable TCP/IP protocol.
Use DHCP/BOOTP	Click to select this item if the IP address, subnet mask, default gateway and IP addresses for DNS primary server and secondary servers are retrieved from the DHCP or BOOTP server.
IP Address	Set the IP address of the selected network interface card.
Subnet Mask	Set the subnet mask of the selected network interface card.
Default Gateway	Set the default gateway of the selected network interface card.
Use IPv6 Function	Use to enable/disable IPv6.

Netware Tab

ITEM	COMMENTS	
Use NetWare Protocol	Enable/disable NetWare protocol.	
Print Server Name	Set a Print Server name.	
Frame Type	Set the primary NetWare frame type.	
Operation Mode	Select the NetWare mode: PSEVER Mode (the default) RPRINTER Mode	
Bindery Setup	Configure Bindery mode items, including:	
	File Server to be connected.	Specify up to 8 file servers to connect.
	Password.	Set a password for the Print Server.
	Job Polling Time	Set the print job polling interval in seconds.
NDS Setup	Set the NDS Tree and Context where the Print Server was created.	
Printer Name	Set the NetWare printer object name.	

EtherTalk Tab

ITEM	COMMENTS
Use EtherTalk Protocol	Enable/disable EtherTalk protocol.
Printer Name	Set the EtherTalk Printer object name.
Zone Name	Set the name of the zone to which the print server belongs.

NetBEUI Tab

ITEM	COMMENTS
Use NetBEUI Protocol	Enable/disable NetBEUI protocol.
Short Printer Name	Set a name for the print server.
Workgroup	Set a name for the work group to which the print server belongs.
Comment	Set the comments for the print server.

SNMP Tab

ITEM	COMMENTS
SysContact	Set the printer manager name.
SysName	Set the printer model name.
SysLocation	Set the location where the printer is installed.

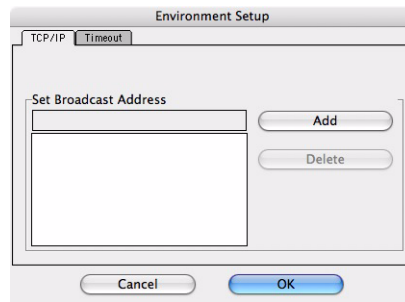
Configuration via HTTP

Displays the printer web page.

Environment setup

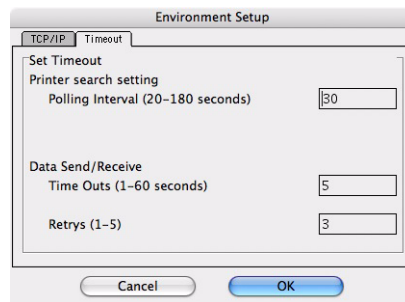
Use this to configure the utility preferences for broadcast addresses for TCP/IP protocol and Time Out.

TCP/IP Tab



ITEM	COMMENTS
Set Broadcast Address	Set broadcast addresses that are used to search Oki network interface cards using the TCP/IP protocol.
Add	Click Add to add the address to the list in the box.
Delete	Select an address in the box, then click Delete to remove it.

Timeout Tab



ITEM	COMMENTS
Set Timeout: Printer Search	Search Every (20-180sec) Set the response waiting time from the network card in seconds. Default is 30 seconds.
Set Timeout: Data Send/ Receive	Time Outs (1-60sec) Set time out between AdminManager and the network interface card in seconds. Default is 5 seconds. Retry (1-5) Sets how many times AdminManager will retry to transmit/receive data to/from the network interface card. Default is 3 retries.

CONNECTING TO YOUR PRINTER

If you have not already done so, run the Oki software installer before following the steps below.

SNOW LEOPARD (10.6) AND LEOPARD (10.5)

USB

1. Choose **Apple Menu > System Preferences > Print & Fax**.
2. If the printer is already in the list of printers, click "-" to remove it.

NOTE

This is necessary as Leopard may not be using the correct printer driver files.

3. Click "+" to add a new printer.
4. Ensure the Default tab is selected and select your printer from the list.
 - > Your printer is displayed as type **USB** in the list of available printers.
 - > Ensure that the **Print Using:** selection matches your printer. If **Generic PostScript Printer** is displayed, select a driver that matches.
5. Click **Add**.
6. Click **Configure...** and ensure the hardware options displayed match your printer.

NOTE

Hardware options are not configured automatically.

The printer is added to the list of printers.

7. Restart your computer.

Bonjour

1. Choose **Apple Menu > System Preferences > Print & Fax**.
2. Click "+".
3. Select your printer model from the Default Browser.
4. Click **Add...**
5. Depending on the connection type, you may be prompted to configure any additional printer hardware options. If your printer has options such as a storage device or second tray, switch on the relevant options.

AppleTalk (Leopard only)

NOTE

AppleTalk is not supported in Snow Leopard.

1. Choose **Apple Menu > System Preferences > Print & Fax**.
2. Click "+".
3. Select your printer model from the Default Browser.
4. Click **Add...**
5. Depending on the connection type, you may be prompted to configure any additional printer hardware options. If your printer has options such as a storage device or second tray, switch on the relevant options.

TCP/IP Connection

1. Choose **Apple Menu > System Preferences > Print & Fax**.
2. Click "+".
3. Click the **IP Printer** button.
4. From the Protocol menu, choose **Line Printer Daemon – LPD**.
5. Enter the printer's IP address in **Address**.

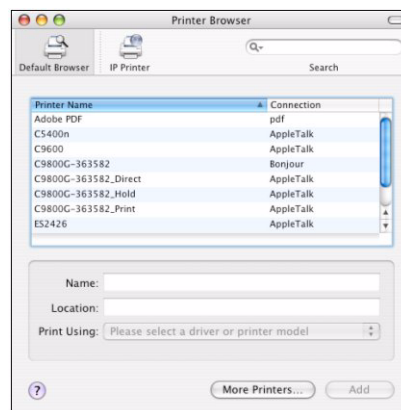
To find the printer's IP address, you can print a configuration page from the printer's operator panel. Refer to "[Configuration settings](#)" on page 7.

6. Check the correct PPD file for your printer is selected in the Print Using menu.
7. Click **Add**.
8. You will be prompted to configure any additional printer hardware options. If your printer has options such as a storage device or second tray, switch on the relevant options.

TIGER (10.4)

Bonjour, AppleTalk or USB

1. Launch Printer Setup Utility
This is located in the **Applications > Utilities** folder.
2. Click **Add...**
3. Select your printer model from the Default Browser.

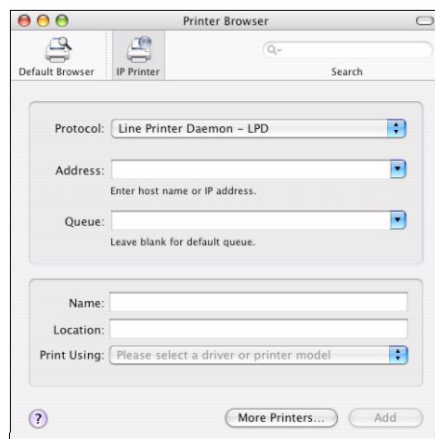


4. Click **Add**.
5. Depending on the connection type, you may be prompted to configure any additional printer hardware options. If your printer has options such as a storage device or second tray, switch on the relevant options.
6. Quit Printer Setup Utility.

TCP/IP Connection

1. Launch Printer Setup Utility
This is located in the **Applications > Utilities** folder.
2. Click **Add...**
3. Click the **IP Printer** button.
4. From the Protocol menu, choose **Line Printer Daemon – LPD**.

5. Enter the printer's IP address in **Address**.



To find the printer's IP address, you can print a configuration page from the printer's operator panel. Refer to ["Configuration settings" on page 7](#).

6. Check the correct PPD file for your printer is selected in the Print Using menu.
7. Click **Add...**
8. You will be prompted to configure any additional printer hardware options. If your printer has options such as a storage device or second tray, switch on the relevant options.
9. Click **Continue**.
10. Quit **Printer Setup Utility**.

PANTHER (10.3)

Rendezvous

NOTE

If your printer is already listed, your Mac may already have discovered the printer before you installed the Oki software. In this case, the printer may be using the incorrect PPD file or may not have the correct hardware options configured. You should delete the printer, quit Printer Setup Utility, and re-launch the utility before continuing.

If you have not already done so, run the Oki software installer before following the steps below.

1. Start the Printer Setup Utility.
This is located in the **Applications > Utilities** folder.
2. Click **Add...**
3. From the pop-up menu, choose **Rendezvous**.
4. Select the printer you wish to connect to.
5. Click **Add**.
6. Click the Printer Setup Utility menu, and choose **Quit Printer Setup Utility**.

After adding the printer, you should configure printer hardware options. Refer to ["Configuring printer hardware options" on page 47](#).

IP CONNECTION

If you have not already done so, run the Oki software installer before following the steps below.

1. Start the Printer Setup Utility.

This is located in the **Applications > Utilities** folder.

NOTE

If your printer is already listed, your Mac may already have discovered the printer before you installed the Oki software. In this case, the printer may be using the incorrect PPD file or may not have the correct hardware options configured. You should delete the printer, quit Printer Setup Utility, and re-launch the utility before continuing.

2. Click **Add...**
3. Click the pop-up menu and choose **IP Printing**.
4. Click the **Printer Type** menu and choose **LPD/LPR**.
5. Enter the printer's IP address.
To find the printer's IP address, you can print a configuration page from the printer's operator panel. Refer to the User's Guide for details.
The Configuration pages are printed. The printer's IP address is shown under the Network section on the first sheet.
6. Enter the queue name. If you do not know the queue name, leave it as **Use Default Queue on Server**.
7. Click the pop-up menu and choose your printer model.
8. Click **Add**.
9. Click the Printer Setup Utility menu, and choose **Quit Printer Setup Utility**.

After adding the printer, you should configure printer hardware options. Refer to ["Configuring printer hardware options" on page 47](#).

AppleTalk connection

If you have not already done so, run the Oki software installer before following the steps below.

1. Start the Printer Setup Utility.
This is located in the **Applications > Utilities** folder.
2. Click **Add...**
3. From the pop-up menu, choose **AppleTalk**.
4. Select the printer you wish to connect to.
5. Click **Add**.
6. Click the Printer Setup Utility menu, and choose **Quit Printer Setup Utility**.

USB connection

If you have not already done so, run the Oki software installer before following the steps below.

1. Start the Printer Setup Utility.

This is located in the **Applications > Utilities** folder.

NOTE

If your printer is already listed, your Mac may already have discovered the printer before you installed the Oki software. In this case, the printer may be using the incorrect PPD file or may not have the correct hardware options configured. You should delete the printer, quit Printer Setup Utility, and re-launch the utility before continuing.

2. Click **Add Printer...**
3. From the pop-up menu, choose **USB**.
4. Choose a printer to connect to.
5. Click **Add**.
6. Click the Printer Setup Utility menu, and choose **Quit Printer Setup Utility**.

CONFIGURING PRINTER HARDWARE OPTIONS

NOTE

Applies to IP and Rendezvous network connections only.

If you have added additional hardware, for example additional paper trays, to your printer these must be enabled in the printer driver.

1. Start the Printer Setup Utility.
This is located in the **Applications > Utilities** folder.
2. Ensure that your printer model is selected.
3. Click the **Printers** menu, and choose **Show Info**.
4. From the pop-up menu, select **Installable Options**.
5. Select any options appropriate to your hardware, and click **Apply Changes**.

PRINTING THE CONFIGURATION PAGE

The printer's configuration page reports information that is required for Mac OS X configuration. Refer to "[Configuration settings](#)" on page 7 for details on how to print a configuration page.

The first six characters of the Ethernet address are the same for all network cards. The last six characters of the Ethernet address are unique to each card.

NOTE

Not all utilities are supported by every operating system. Please check with your support website for latest information.

TROUBLESHOOTING

The network addresses used in this manual are shown for example only. Network addresses used in your installation must be generated from your own network.

TCP/IP

COMPUTER CANNOT FIND THE NETWORK INTERFACE CARD

Turn the printer off for 15 seconds and then on again.

Confirm the network interface is enabled on the printer.

Check there is a response to the PING command.

Check that the network cable is correctly connected and that the green LED close to the printer's network interface is lit. If not, change the cable and try again.

Run the self-diagnostic test.

Check the IP Address, Subnet Mask and Gateway are correct.

Check that the TCP/IP protocol is set to Enable.

Reset the network interface card to factory default settings.

If DHCP, BOOTP and RARP are not used, ensure they have been set to Disable.

CANNOT PRINT WITH LPR AND FTP

Turn the printer off for 15 seconds and then on again.

Check there is a response to the *ping* command.

Check the network cable is correctly connected.

Change the cable and try again.

Check the host name and IP address are configured in the workstation.

Check the printer port name is configured in the workstation.

There are three port names: *lp*, *euc* and *sjis*. Use *lp* by default as *euc* and *sjis* are specific to PostScript printers.

INCORRECT USER NAME ON THE BANNER PAGE

If printing with *lpr*, the user name printed is unknown and the filename printed is the Spool file name.

If printing with FTP, the user name printed is the user name entered during FTP login and the file name printed is the transmitted file name. If the print directory name is indicated in the put command, the file name is not printed. The printer name printed is the logical directory name.

NETBEUI

THE NETWORK INTERFACE CARD IS NOT IDENTIFIED

Turn the printer off for 15 seconds and then on again.

Check the network cable is correctly connected.

Change the cable and try again.

Check Microsoft Network Client and NetBEUI have been added to the network section of the Windows Control Panel.

Check the NetBEUI protocol is set to **Enable**.

Check the factory setting of the workgroup name is **PrintServer** and the computer name is ML+ the last six characters of the MAC address.

Check the computer name of the NIC is different from the computer name on the network.

ERROR WRITING TO PRN1

Check the printer is online.

If there is an error message indicating the paper has run out, add more paper and cancel the error.

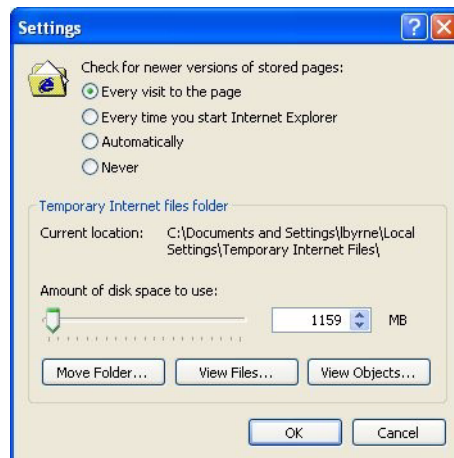
Check whether another user is printing. Print after the other user has finished.

WEB BROWSER

To prevent your web browser caching the printer web pages, carry out the following steps as appropriate for your web browser.

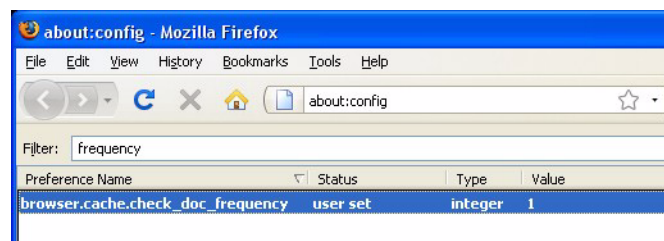
MICROSOFT INTERNET EXPLORER

1. Select **Tools > Internet Options**.
2. Select the General tab and, in **Temporary Internet files**, click **Settings**.
3. Under **Check for newer versions of stored pages**, select **Every visit to the page**.
4. Click **OK**.



MOZILLA FIREFOX

1. In the Firefox address bar, type **about:config**.
2. In the Filter field, type **frequency**.
3. Double click on the entry **browser.cache.check_doc_frequency**.
4. Change the Value to **1**.
 - > 0: Check once per browser session
 - > 1: Check every time I view the page
 - > 2: Never check (always use cached page)
 - > 3 (default): Check when the page is out of date (automatically determined)
5. Click **OK**.



OKI EUROPE LIMITED

Blays House

Wick Road

Egham

Surrey, TW20 0HJ

United Kingdom

Tel: +44 (0) 208 219 2190

Fax: +44 (0) 208 219 2199

WWW.OKIEXECUTIVESERIES.COM

