



Print your medical imaging in HD colour with integrated DICOM A4 printers

OKI is a leader in printing innovation, providing organisations with High Definition colour printing devices based on digital LED technology, and now our sophisticated range of printers integrate seamlessly with your clinical systems using DICOM.

A first in medical imaging and printing

This is a first in digital printer technology, combining the cost effectiveness and high quality output of an LED printer with embedded DICOM software, allowing you to print directly from medical equipment without the use of conversion software or external print servers. You no longer need to settle for expensive printing on specialist media and devices.

With the ES6410 DMe you can now print your medical imaging cost effectively on standard media formats in vibrant, HD colour and in sizes up to A4. From nuclear medicine (2D Scintigraphy and 3D SPECT tomography) to ultrasounds, these images can now be easily printed for your own non-diagnostic use or to provide a copy for your patients and clients to take away with them.

Reduce your costs and improve your printing

The ES6410 DMe is not only perfect for your medical imaging printing, it can also be used for your standard office printing, from patient letters and forms to medical reports, allowing you to choose one machine that answers all the needs of your organisation, cutting down on the number of devices and consumables used.

The ES6410 DMe is based on our existing, award winning printers, offering the same reliability, ease of use, low total cost of ownership, media flexibility and high quality output, with the additional benefit of embedded DICOM technology. Through system integration and the use of energy efficient equipment, the ES6410 DMe offers considerable savings for your day-to-day printing needs.

See it clearer with OKI

Talking directly with your medical imaging equipment, the ES6410 DMe presents many opportunities for printing high quality, non-diagnostic images in HD mono and colour on a wide range of media. The significantly reduced costs of printing using the ES6410 DMe, compared with traditional DICOM printing technologies, allows medical establishments to change their approach to printing.

Imagine the possibilities; offer mothers-to-be A4 ultrasound scans or keep sharp and clear non-diagnostic images in patients' records, and all at a very low cost. In fact, the same cost of printing as standard office documents.

Benefits at a Glance

- Fully integrated DICOM print server
- Up to 2 simultaneous imaging equipment connections
- Recommended usage - Nuclear medicine, ultrasound
- High quality non-diagnostic mono and colour printing of medical images
- No additional external hardware or software required
- Handles media from A6 to A4 wide 1200mm banners, from 64 to 250gsm

ES6410 DME - Colour and Mono DICOM Embedded Printer

OVERVIEW

Description	The ES6410 DME is our most compact DICOM imager. Primarily designed for Ultrasonography, it can of course be connected to other DICOM print SCU compliant modalities
Imaging Technology	CMYK toner based engine with tandem technology. Light sources are LED arrays @ 600 ppi with multi level capability
Network	10/100 Base TX (RJ45) interface
Product Order Number	46198705

GENERAL FEATURES

Print Format - Paper Weight	A4 - 64 to 250 gsm
Dimensions (HxWxD)	340 x 435 x 546mm
Weight	26kg

DICOM SERVER FEATURES

Capability	DICOM 3.0 Print SCP, Store to Print (US, Ophthalmic, Endoscopy)
Maximum Number of AET	25
Modalities Connection	No restriction (see DCS)
Dicom Server Interface	Integrated web server
Log	Extended log capability in case of troubleshooting
Dicom Optional Features	LUT: identity, reverse, lin-od; True size printing; Colour
Image Generation	Specific colour rendering optimized for medical images
Graphical Header	Capability to add a custom graphical header on each printout

AET DEPENDENT FEATURES

AET Name	Print SCP Application Entity Title (AET)
Print Destination	Allows to print DICOM Images on other non DICOM OKI printers
Printer Tray	Use preferred paper for your medical prints
Copy	Send one, print what you need
Page Format	Force output format to desired size
Replace Header by Logo	Enhance your communication on the printouts
Header	Enter text that will print on top of page or select Logo
Footer	Edit the text on page bottom
Booklet Print Mode	Tells the Server to make a booklet with your Images
Border Density	Value from Black, White or Client
Empty image Density	Value from Black, White or Client
Image Background	Fill or not the unused reserved space with black
Polarity	Force image polarity inversion if needed
Smoothing Filter	Activate and adjust the level of sharpen
Layout Format	Select your desired layout when using Store to Print Protocol
Black & White Mode	Select your preferred rendering of color images
Colour Mode	Select your preferred rendering of color images
Contrast	Add or remove contrast on the printouts
Brightness	Add or remove brightness on the printouts
XY Scale	Rescale your images
XY Offset	Change the position of your images
Black & CMY Gamma	For fine tuning of your image rendering

ACCESSORIES (ORDER NUMBERS)

2nd Paper Tray	44274502
3rd Paper Tray	44274502
Cabinet	01219302

CONSUMABLES (ORDER NUMBERS)

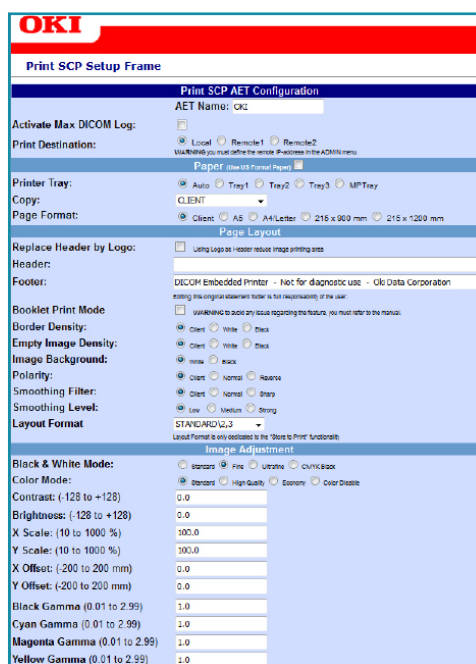
Toner Cartridges* (6,000 pages)	Cyan: 44315319; Magenta: 44315318; Yellow: 44315317
Toner Cartridges* (8,000 pages)	Black: 44315320
Image Drum** (20,000 pages)	Cyan: 01272903; Magenta: 01272902; Yellow: 01272901; Black: 01272904
Transfer Belt (60,000 pages)	44341902
Fuser Unit (60,000 pages)	44289103

MISCELLANEOUS

Maximum Duty Cycle	60 000 pages/month
Maximum Print Speed	36 pages/minute

DICOM INTERFACE

On Embedded Web Server	Full configuration of the server features, log viewing
-------------------------------	--



Consumables Information: For the protection of your printer, and in order to ensure that you benefit from its full functionality, this model has been designed to operate only with genuine OKI toner cartridges. These can be identified by the OKI trademark. Any other toner cartridge may not operate at all, even if it is described as "compatible", and if it does work, your printer's performance and print quality may be degraded.

*Toner: Number of A4 pages @ 5% coverage.
 Medical printing strongly alter these values.
 **Drum: Average number of A4 pages printed.

OKI EUROPE LTD.

Blays House, Wick Road
 Egham, TW20 0HJ
 United Kingdom
 T +44(0) 20 8219 2190
 F +44(0) 20 8219 2199

WWW.OKIEXECUTIVESERIES.COM

OKI

Open up your dreams