



Delivering OK! to your life.

Support for today's society to foster a better tomorrow

For more than 140 years now, OKI has accumulated reliable technologies and earned the trust of people everywhere as a social infrastructure manufacturer and service provider. In fields ranging from telecommunications to road-related services, finance, manufacturing, disaster prevention and healthcare, we provide support for society in many ways both apparent and invisible as we lay the foundations for better future lifestyles to be enjoyed by all.

In recent years, we have faced a variety of new problems and rapid changes which create new challenges, and these can only be overcome by a capacity to innovate with an eye to future generations. By calling upon resilient technologies cultivated over the years at OKI, which function reliably in any operating environment, and combining these with new technologies in fields such as AI and data utilization, we are able to respond flexibly to changes throughout society, while continuing to cultivate new value.

These dependable manufacturing capabilities, along with our willingness to boldly take on new challenges, enable us to keep evolving into the future.



Harnessing results of past efforts in new breakthroughs

For more than 140 years now, OKI has achieved many industry-firsts all around the world based on our enterprising spirit. Using these successes as a foundation, we continue to help solve the problems faced by society today and contribute toward advancements in and optimization of infrastructure. Always looking forward, we plan to step up our efforts as the Company's 150th anniversary approaches.

Coverage area, main products and solutions

Public Solutions

OKI offers solutions utilizing wireless communication, sensors and predictive analyses to realize social infrastructure services that operate continuously without interruption. Our efforts in the fields of road-related services, disaster prevention, government and defense help to forge safe and reliable social foundations.



Road-Related Services
 · Road systems such as electronic toll collection (ETC) systems for expressways



Aerospace
 · Aviation-related systems
 · Cockpit displays for commercial aviation, etc.



Government
 · Radio firefighting dispatch and command systems
 · Municipal wireless disaster warning systems, etc.



Ocean
 · Measurement Barge for defense and marine measurement applications (SEATEC NEO), etc.

Enterprise Solutions

Coordinated endeavors in this field encompass everything from design through to manufacturing, operations and maintenance for ATM and mechatronic products. We offer advantages such as cashless transactions and labor savings while contributing to efficiency and convenience improvements in the fields of logistics, medical care, public services and road-related services.



Finance
 · Branch office/Centralized administration systems (ATMs, SmartCashStations), etc.



Retail
 · Cash handling systems (cash dispensers, coin dispensers), etc.



Transportation and Passenger Services
 · Automated baggage check-in machines
 · Reservation and ticketing terminals, etc.



Manufacturing
 · Projection Assembly System, etc.

Component Products

These operations include sensing and telecommunication technologies, edge devices utilizing AI technologies, printers, and more. Through innovations in infrastructure, working styles and other areas aimed at solving society's problems, we are active in a wide range of fields—both in Japan and on a global scale.



Business Communications
 · Contact centers
 · PBXs
 · Business phones, etc.



Printers
 · Various monochrome and color printers
 · Label printers, etc.



Edge Devices
 · 920 MHz band multi-hop wireless systems
 · Zero Energy IoT Series, etc.

Electronics Manufacturing Services (EMS)

OKI leverages technologies in telecommunications, mechatronics and other fields for integrated EMS, from design and manufacturing through to testing. We deploy our flexible manufacturing support services in a diverse array of fields including industrial equipment, medical care, aerospace and more.



ICT devices



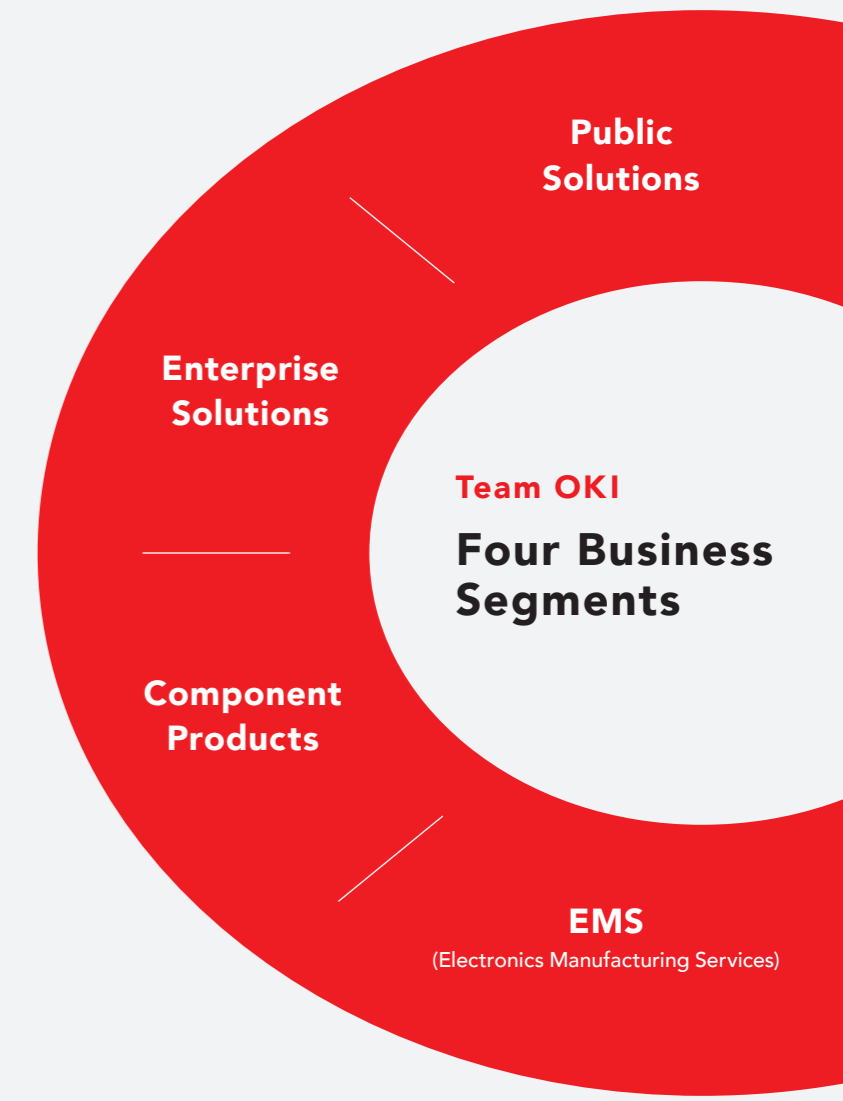
Industrial



Medical devices



Aerospace and on-board automotive electronics



OKI's Corporate History

1881
 Kibaturo Oku establishes Meikosha, Ltd. (predecessor to OKI)



1934
 Type-3 Telephones



1949
 Oki Electric Industry Co., Ltd. (OKI) established



1953
 Page printing telegram "Teletypewriter"



1961
 Computer equipped with first Japan-made core memory



1969
 Minicomputer "OKITAC-4300"



1981
 World's first LED printer



1982
 World's first cash-recycling ATMs



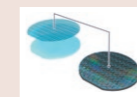
1996
 "The Kawaraban Electronic Whiteboard"
 Computer-Telephony Integration System "CTstage"



2002
 Consigned designing and manufacturing services EMS Business began.



2006
 First in the world to successfully mass production to integrate LEDs and ICs using crystal film bonding (CFB) technology.



2022
 "Zero Energy High-Sensitivity Camera"



1881

The roots of OKI, and our first-in-Japan telecommunications technologies

We developed Japan's first telephone equipment and pioneered a number of other innovative telecommunications devices. As a manufacturer of such products, we earned people's trust and established a reliable track record.

1940s & 1950s

Helping with post-World War II recovery and spreading our technologies around the world

In addition to supporting domestic recovery efforts related to telephones and underwater communications, we utilized our high-frequency technologies in overseas applications and expanded into the field of electronics.

1960s & 1970s

From a peripherals company to a general electronics manufacturer

OKI made use of printing and telegraph technologies to pursue growth in the printer field. We also contributed to the development of computers in Japan and evolved into a general electronics manufacturer.

1980s & 1990s

Innovations for an emerging digital society and global corporate expansion

OKI expanded business operations in the field of call centers, with a central focus on financial systems. We dove into new fields combining IT and telecommunications, and established overseas production centers to expand on a global scale.

2000 to Present

Helping to build a sustainable society through continuing technological advances

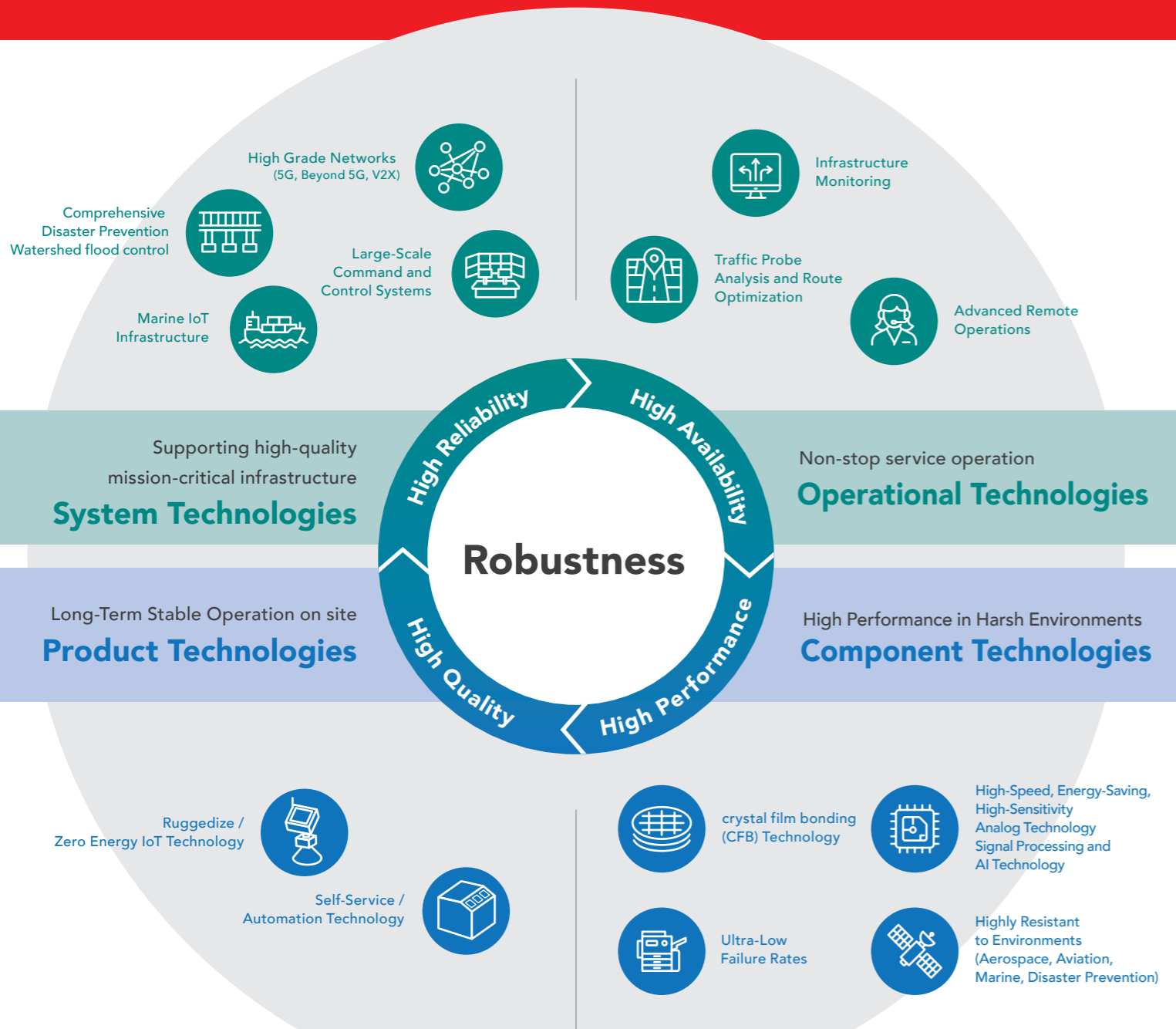
Based on more than 140 years of history, OKI has stepped up its technological capabilities through incorporation of AI and other cutting-edge technologies. Moving forward, we will continue to tackle societal problems and work to bring about a sustainable society for all.

2031 OKI's
150th
 Anniversary

More information here ▶

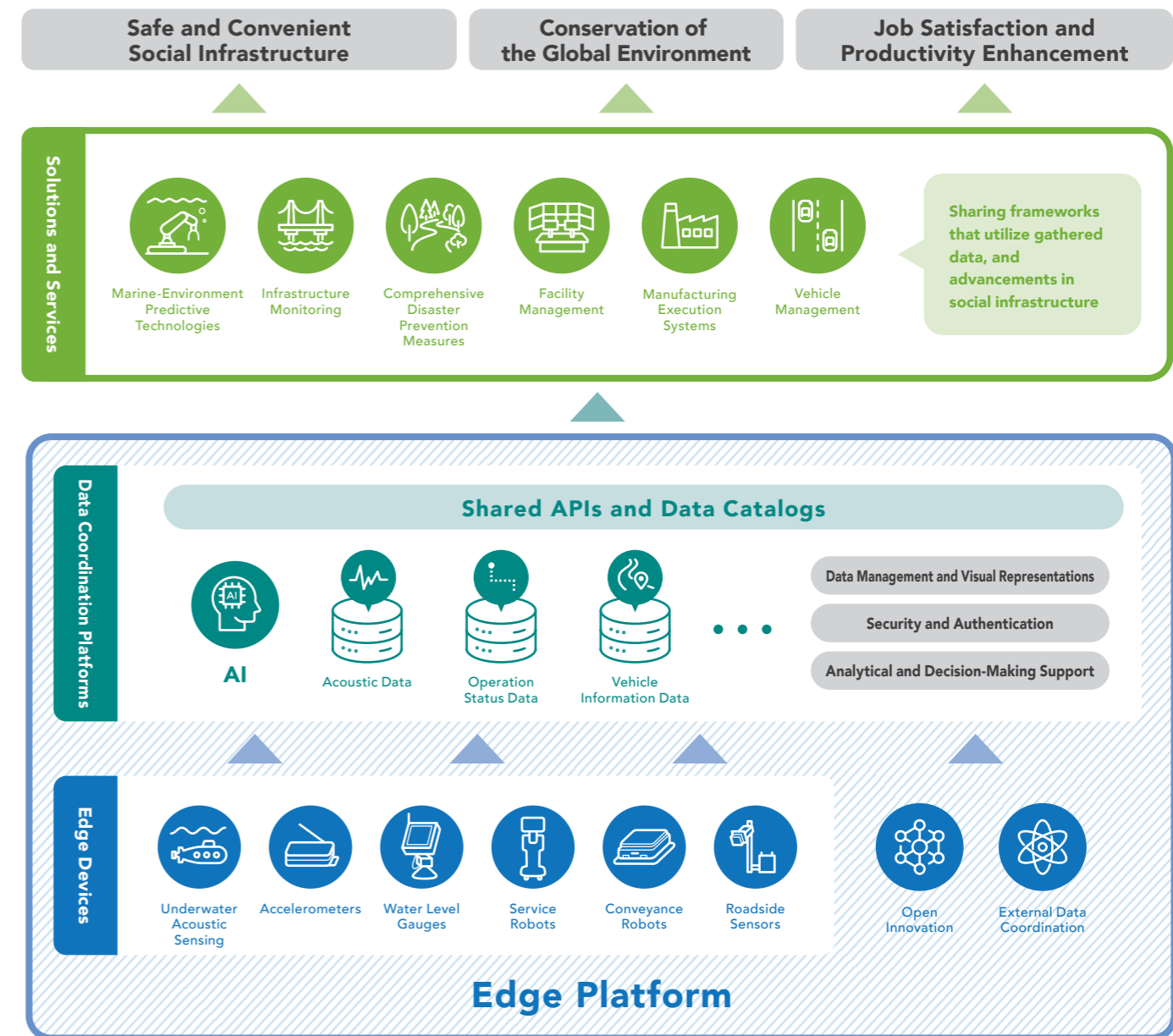


Sustainable social infrastructure rooted in proven technologies and future strategies



At OKI, "robustness" refers to more than just high reliability and availability for physical products and services. It also includes a wide range of technological strengths, component technologies, and operational technologies in support of social infrastructure enabling reliable operations 24 hours a day, 365 days a year with no stoppages or interruptions on a system-wide basis. This type of robustness is the DNA of OKI manufacturing, and it is an essential kind of value for the future of our society.

Robustness underpins the value which enables social infrastructure to operate without any stoppage or interruption over the long term. Our edge platform foster new value by bringing data analysis and utilization closer to the actual worksite. This bolsters overall-system stability and reliability, while also offering the advantage of maximized flexibility in response to diverse worksites and future changes. OKI utilizes such technological strengths to provide support for social infrastructure while also leveraging AI, IoT (Internet of things) technologies and more in edge-data usage to pioneer new possibilities on industry front lines.



OKI edge platform bring together and coordinate data from various edge devices, open innovation projects, and external data sources to accelerate value creation. AI utilization enables instantaneous analysis and decision-making, supporting human activities and maximizing the benefits provided by edge devices. By deploying such frameworks in infrastructure, manufacturing, and disaster prevention, we can build resilient social systems with uninterrupted operations.

Creating new and unprecedented value in support of people's lifestyles around the world

Pursuing further advances in existing technologies, devising solutions that offer never-before-seen value, and contributing in wide-ranging ways to societies around the world—OKI considers these to be its mission. By laying the foundations for global-scale innovations, we can realize new types of value.

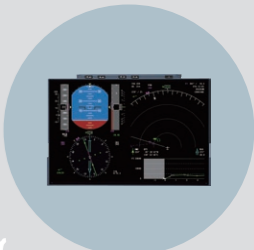
Current main products for global market



Printers



ATMs



Cockpit displays for commercial aviation

New business Creation

A Behavioral Change Platform **Wellbit**

Wellbit gathers and analyzes time-series data from user smartphones to enable optimized message sending at appropriate times and promote shifts in user health awareness and activities.



Location and Inventory Management System **SHO-XYZ**

SHO-XYZ offers centralized management of product storage locations using your smartphone, inventory information and more for products, equipment and any other type of physical thing, whether it's stored indoors or outdoors. This contributes to significant labor reductions in physical inventory management.



DX Platform Technology **REMOWAY**

Enjoy centralized management of personnel, sensors, terminals and robots in real time using REMOWAY. This system provides remote and sophisticated monitoring and control operations to solve problems such as labor shortages and person-dependent tasks.



CFB Solutions

crystal film bonding (CFB) technology

crystal film bonding (CFB) is the first-ever technology to successfully bond heterogeneous materials in semiconductor mass-production operations. OKI uses the advantage provided through CFB in collaboration with other companies to provide added value through the creation of composite semiconductor devices.



Healthcare / Medical care

Logistics

Advanced Remote Operations

Semiconductors

Global expansion of new-business creation activities

Technology Exploration Base (Silicon Valley, USA)

Dedicated, permanent staff at this facility serve as a contact point for new technology search inquiries from around the world, and in this way strengthen OKI's international competitive strength.

OKI Berlin Lab R&D Center (Berlin, Germany)

OKI established this facility for purposes of strengthening our photonics technologies—one of our core technology areas—to achieve world-leading capabilities and actualize practical deployments on a global scale.

Global Innovation Hub (GIH)

OKI establishes GIHs as frontline innovation bases for existing Overseas Group locations in a full-participation format for purposes of creating frameworks for communication and dissemination of activities and results from said overseas locations.



Yume Pro

Full-Participation Innovation Management System

After attaining ISO 56002 certification prior, we firmly established the Yume Pro system and its culture of innovation throughout the entire Group, thus enabling all employees to take part in new-business creation, existing-business improvements and operational improvements as part of their day-to-day work.

More information here ▶



A driving force at OKI for future-oriented creation

We solve social issues based on the key message, "Delivering OK! to your life," through critical Mono-zukuri and Koto-zukuri.

Since our founding more than 140 years ago, OKI has always identified issues faced by our customers on the front lines of operations and helped address them by providing products and services that support critical social infrastructure. We believe that delivering safety and peace of mind to customers, and gaining the trust of stakeholders through these activities, form the foundations for enhancing corporate value.

As a company "Delivering OK! to your life" for many years, OKI's vision is to provide value that solves social issues in three specific fields of contribution—namely, safe and convenient social infrastructure, job satisfaction and productivity enhancement, and conservation of global environment, by 2031, our 150th anniversary.

To achieve this, we launched our Medium-Term Business Plan 2025 in April 2023 to realize sustainable growth and enhance corporate value by redirecting our focus toward new areas of growth while strengthening our ability to adapt to changing environments. Along with sustainable management based on material issues (Materiality), we will utilize OKI strengths in edge technologies and know-how to grow our existing business footprint while actively tapping into new areas where growth is anticipated for purposes of creating business for the future.

OKI stands committed to creating and providing new value that underpins a society where everyone can live safely, in order to solve social issues in the fields where the OKI Group contributes based on our key message, "Delivering OK! to your life."

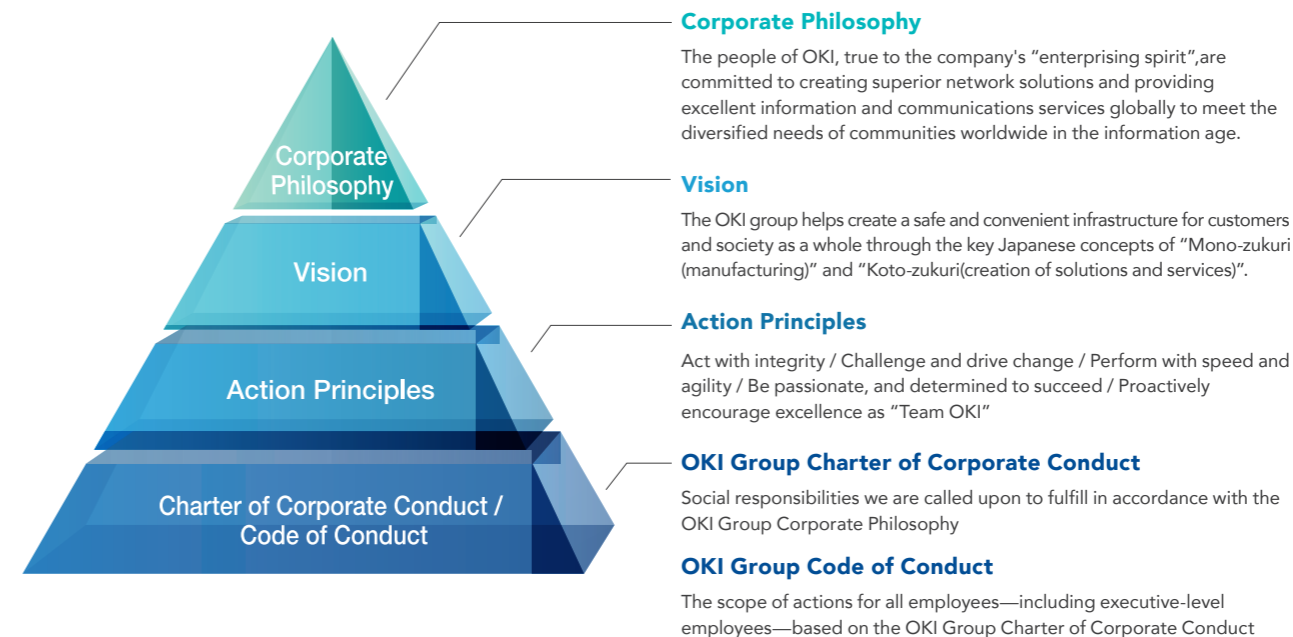
We look forward to your continued support and guidance as we move forward.



Representative Director and CEO
Takahiro Mori

OKI Group Values

Amid large changes in the business environment, we seek to embed these principles as extensively as we can into our practices with the commitments expressed in the OKI Group Charter of Corporate Conduct and the OKI Group Code of Conduct as the cornerstones of our corporate activities. We seek to realize our corporate philosophy by striving to embody our vision.



Sustainability Measures

Based on ESG (environmental, social and governance) perspectives, we undertake various measures aimed at solving problems faced by society.

More information here ▶



Participation in initiatives/organizations

- United Nations Global Compact (UNGC)
- Science Based Targets initiative (SBTi)
- TCFD Consortium / Japan Climate Initiative (JCI)
- Responsible Minerals Initiative (RMI)

Evaluations by Major External Organizations



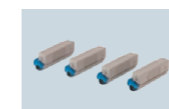
Environmental Conservation

- Promoting harmony between the environment and management with specific targets for FY2030 and FY2050

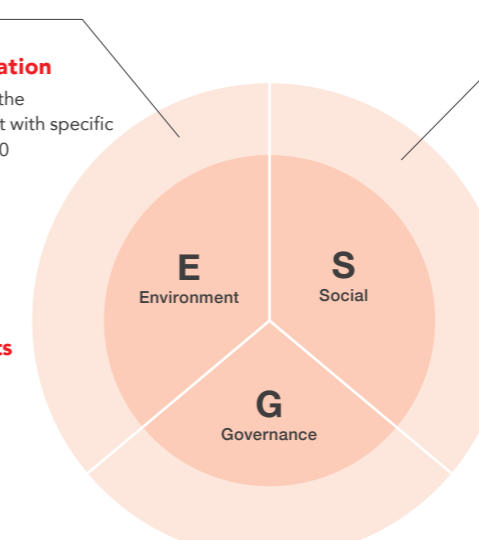
Obtaining ISO 14001 certification

- Coverage rate of production sites: 100.0% (FY2024 actual performance)

Recycling of used products



Reduction of CO₂ emissions from the products themselves



Giving back to society

- Contributing to forestation activities around the world
- Donation of a blood transport vehicle to a blood center of the Japanese Red Cross Society



Respect for Human Rights

- "OKI Group Human Rights Policy"
- "OKI Group AI Principles"



Respect for Employees

- Policies that help employees with disabilities work from home and thrive



Information Security

- Thorough Protection of Personal Data
- General Data Protection Regulation Compliance

Fair Corporate Activities

- Ensuring Groupwide understanding of the OKI Code of Conduct

Official Links

■ OKI Website

<https://www.oki.com/global/>

Global website for information on the OKI Group as well as our activities, products and services



■ OKI official YouTube Channel

<https://www.youtube.com/c/OKIchannel>

Videos conveying a wide variety of information on the OKI Group (only available in Japanese)



■ OKI official Facebook Page

<https://www.facebook.com/oki.japan/>

Information on the OKI Group today and our activities so that you can get to know us better !



■ OKI Report

<https://www.oki.com/jp/sustainability/report/>

Integrated report covering OKI Group's strategies, policies and more for stockholders, investors and other stakeholders



■ OKI Technical Review

<https://www.oki.com/global/otr/>

Technical journal published by the OKI Group to convey information in an easy-to-understand manner on technological developments



(*OkI Electric Industry Co., Ltd. is referred to as OKI.)

*All company names and product names included in this corporate brochure are trademarks or registered trademarks of each of the companies they present)

COMPANY PROFILE

PROFILE (As of April 1, 2026)

Company Name: Oki Electric Industry Co., Ltd.
Founded: 1881
Company Established: November 1, 1949
Common Stock: 44,000 million yen
Employees*: 11,956 (Consolidated)
 4,389 (Non-consolidated)

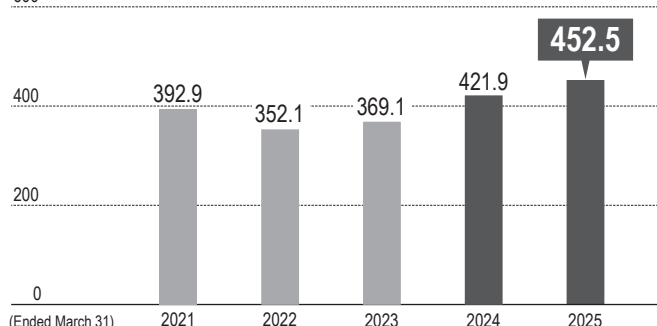
Representative Director and CEO: Takahiro Mori
Head Office: 1-7-12 Toranomom, Minato-ku
 Tokyo 105-8460, Japan
 Tel +81-3-3501-3111
 URL <https://www.oki.com>

*As of December 31, 2025

NET SALES/OPERATING INCOME/OPERATING PROFIT MARGIN

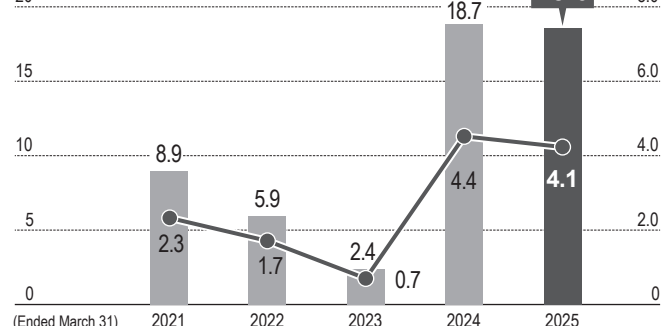
Net Sales (Consolidated)

(Billions of yen)
600



Operating Income/Operating Profit Margin (Consolidated)

(Billions of yen) ■ Operating Income ● Operating Profit Margin (%)



MANAGEMENT (As of April 1, 2026)

DIRECTORS

Representative Director Takahiro Mori
 Representative Director Teiji Teramoto
 Director Yuichiro Katagiri
 Director Yoichi Kato
 Director Tamotsu Saito*¹
 Director Izumi Kawashima*¹
 Director Makoto Kigawa*¹
 Director Ryoko Toyama*¹

EXECUTIVE OFFICERS

CEO (Chief Executive Officer) Takahiro Mori
 Senior Executive Vice President Teiji Teramoto
 Executive Vice President Yuichiro Katagiri
 Senior Vice President Yoichi Kato
 Senior Vice President Hiroshi Nishimura
 Senior Vice President Shotaro Nakatsu
 Senior Vice President Nobuya Suzuki
 Senior Vice President Kazutoshi Isogai
 Executive Officer Masaya Motosugi
 Executive Officer Kurato Maeno
 Executive Officer Kei Kato
 Executive Officer Hiroe Nakanishi
 Executive Officer Naohiro Amamoto
 Executive Officer Hiroshi Tanabe
 Executive Officer Takashi Mukai
 Executive Officer Yuichi Suzuki
 Executive Officer Koji Okada
 Executive Officer Takahito Suzuki

AUDIT & SUPERVISORY BOARD MEMBERS

Standing Audit & Supervisory Board Member Masashi Fuse
 Standing Audit & Supervisory Board Member Hajime Inoue
 Audit & Supervisory Board Member Yoshihiro Tsuda*²
 Audit & Supervisory Board Member Yasuyuki Oda*²
 Audit & Supervisory Board Member Hiroshi Niinomi*²

*¹ Outside Directors

*² Outside Audit & Supervisory Board Members

OKI FACILITIES IN JAPAN (As of April 1, 2026)

MAJOR FACILITIES

OKI Toranomon Office (Minato-ku, Tokyo)
OKI Shibaura Office (Minato-ku, Tokyo)
OKI Warabi System Center (Warabi city)
Takasaki Facility (Takasaki city)
Honjo Plant (Honjo city)
Tomioka Plant (Tomioka city)
Numazu Plant (Numazu city)
Nishiyokote Plant (Takasaki city)
Komine Plant (Akiruno city)
OKI Kansai Techno Research Center (Osaka city)

MAJOR OFFICES

■ HOKKAIDO REGION

Hokkaido Office (*Sapporo city*)

■ TOHOKU REGION

Tohoku Office (*Sendai city*)
Aomori Office (*Aomori city*)
Akita Office (*Akita city*)

■ KANTO/KOSHINETSU/HOKURIKU REGION

Kitakanto, Hokushinetsu Office (*Takasaki city*)
Gunma Office (*Takasaki city*)
Nagano Office (*Nagano city*)
Niigata Office (*Nagaoka city*)
Hokuriku Office (*Kanazawa city*)

■ CHUBU REGION

Chubu Office (*Nagoya city*)
Shizuoka Office (*Shizuoka city*)
Gifu Office (*Gifu city*)

■ KANSAI REGION

Kansai Office (*Osaka city*)
Kyoto Office (*Kyoto city*)

■ CHUGOKU REGION

Chugoku Office (*Hiroshima city*)
Okayama Office (*Okayama city*)
Sanin Office (*Matsue city*)
Yamaguchi Office (*Hofu city*)

■ SHIKOKU REGION

Shikoku Office (*Takamatsu city*)
Kochi Office (*Kochi city*)
Tokushima Office (*Tokushima city*)
Matsuyama office (*Matsuyama city*)

■ KYUSHU REGION

Kyushu Office (*Fukuoka city*)
Kumamoto Office (*Kumamoto city*)
Kagoshima Office (*Kagoshima city*)
Oita Office (*Oita city*)
Miyazaki Office (*Miyazaki city*)
Okinawa Office (*Urasoe city*)

MAJOR AFFILIATES (As of October 1, 2026)

JAPAN

OKI IDS
OKI ADTECH SUPPORT
OKI Alestech
OKI Engineering
OKI Crosstech
OKI Com-Echoes
OKI Comtec
OKI Consulting Solutions
OKI Circuit Technology
OKI JIP
OKI Sympho-Tech
OKI Software
OKI Software Expert Service
OKI Data Manufacturing and Engineering Service
OKI Electric Cable
OKI TOHO DENSHI
OKI TOMIOKA Manufacturing
Japan Business Operations
OKI Nextech
OKI High-Technologies
BANKING CHANNEL SOLUTIONS
OKI Proserve
Mogami Wire & Cable
OKI WorkWel

AMERICAS

OKI Data Americas

EUROPE

OKI Europe

ASIA/OCEANIA

OKI Banking Systems (Shenzhen)
OKI Electric Industry (Shenzhen)
OKI Hong Kong
OKI Data (Australia)
OKI Data (Singapore)
OKI India
OKI Systems Korea
OKI Systems (Thailand)
OKI VIET NAM
OKI AVIONICS ASIA