

Shareholder Information

Number of Shares (As of March 31, 2024)

Authorized: 240,000,000
 Issued: 87,217,602
 (Including 542,144 treasury stock)

Administrative Agent for the Company's Shareholder Register

Mizuho Trust & Banking Co., Ltd.

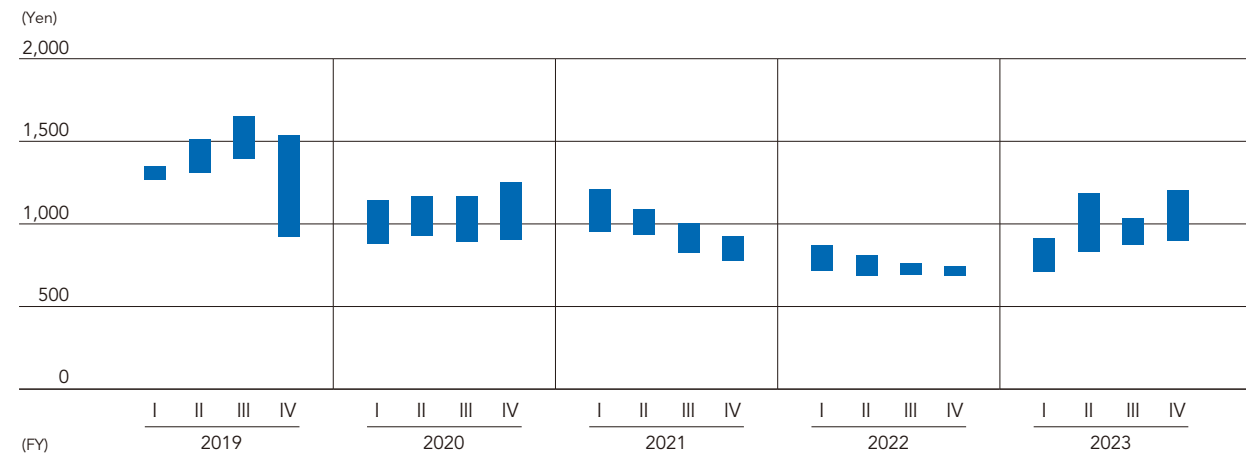
Number of Shareholders (As of March 31, 2024)

66,517

Stock Exchange Listing

Prime Market of the Tokyo Stock Exchange
 Securities Code: 6703

Common Stock Price Range on the Tokyo Stock Exchange



Major Shareholders (As of March 31, 2024)

Major Shareholders (Top 10)	Number of Shares Held	Percentage of Shares Held
The Master Trust Bank of Japan, Ltd. (trust account)	11,944,800	13.78
Custody Bank of Japan, Ltd. (trust account)	4,024,200	4.64
Oki Denki Group Employees' Shareholdings Committee	2,171,861	2.51
BNYM AS AGT/CLTS 10 PERCENT	1,968,900	2.27
Mizuho Bank, Ltd.	1,419,648	1.64
Meiji Yasuda Life Insurance Company	1,400,097	1.62
Custody Bank of Japan, Ltd. (trust account 4)	1,318,200	1.52
DFA INTL SMALL CAP VALUE PORTFOLIO	1,204,986	1.39
JUNIPER	1,188,700	1.37
JP MORGAN CHASE BANK 385781	1,163,683	1.34

Note: The percentage of shares held is calculated after excluding 542,144 shares of treasury stock.

Distribution of Shareholders (As of March 31, 2024)

