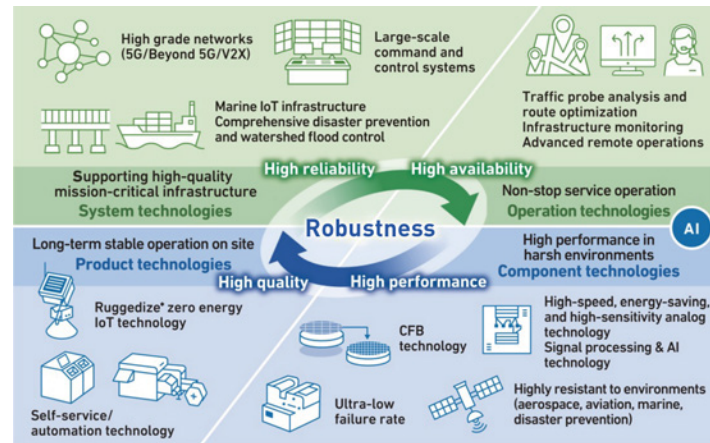


# Technology Strategy

## OKI's Core Competence: "Robustness"

OKI possesses advanced technologies that ensure the "continuous & resilient" operation of social infrastructures. This core competence, which spans the entire value chain of technology development, we refer to as "robustness."

Not only do we create highly reliable and available products and services, but we also achieve high performance that can withstand various environments through technologies such as AI and signal processing, enabling the sophisticated utilization of the vast amounts of data generated daily. Our technology strategy defines the goal of further enhancing the strengths of the technologies that comprise "robustness."

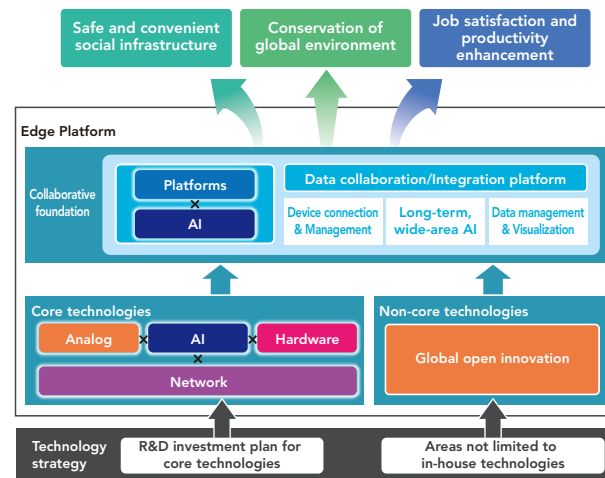


\* Ruggedize: Technology that enhances the durability of products or systems, equipping them with qualities such as heat and cold resistance, waterproofing, dustproofing, and shock resistance, making them suitable for challenging environments

## Technological Innovation through the Edge Platform

Building on the foundation of "robustness," the Edge platform is a technological concept designed to rapidly contribute to society by advancing core technologies and utilizing data. The "edge" refers to the intersection between the digital space, where various information is exchanged and processed, and the real world in which we live. OKI has developed significant strengths at this edge across various industries. For example, we excel in analog technologies that capture the real world in detail through optics, acoustic waves, and radio waves; hardware technologies that create advanced devices using mechanical and electrical engineering; AI technologies that enable sophisticated utilization of the data collected; and network technologies that connect the real and digital spaces. Additionally, we are developing platform technologies that serve as a collaborative foundation linking all these technologies.

Through the "Edge platform," we aim to improve the reusability of these technologies and enhance development efficiency, while promoting cross-functional data utilization to increase the value of our solutions. By integrating cutting-edge technologies through open innovation, the Edge platform will accelerate the resolution of societal challenges.

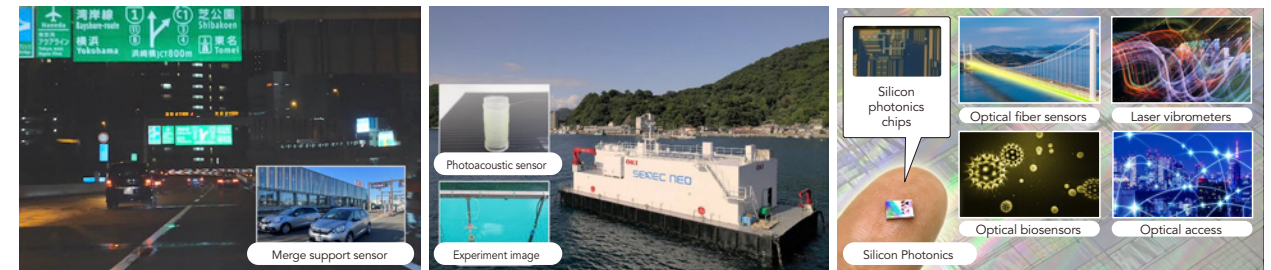


## Analog × AI Technologies for Enhancing Social Infrastructure through Optics, Acoustic Waves, and Radio Waves

OKI combines its core "analog" and "AI" technologies to achieve highly accurate and environmentally resilient edge sensing and control systems. For example, radio-ware technology used in ETC systems captures fast-moving vehicles, providing reliable communication regardless of weather conditions. As roadside technology, it will also offer safety and convenience from the infrastructure side for future autonomous driving.

Additionally, the optical technologies developed through fiber-optic communication are being applied to sensors utilizing optical fibers and lasers. In tandem with this, we are working on silicon photonics technology, which transforms complex, large optical circuits into ultra-compact chips at the scale of 1/100,000, promoting broader use in social infrastructure.

Moving forward, we will continue to enhance the value we offer by combining these analog technologies, which generate advanced data on-site, with AI, contributing to the advancement of social infrastructure.



## Building a Secure Foundation for AI Utilization

OKI has been involved in AI development for over 30 years, long before the current AI boom. During this time, we have not only advanced AI technology but also placed great importance on how to approach AI, including the risks, as a company responsible for supporting infrastructure. Even with the rapidly growing field of generative AI, we are actively promoting its use for streamlining internal operations and in our business, while taking thorough security measures. We are simultaneously working on establishing a secure platform for AI utilization and providing employee training, ensuring we deliver AI that can be safely integrated into social infrastructure.

### OAiCO (OKI AI COmmunity)

#### Promoting AI and Data Utilization through Community Activities within the OKI Group

- OAiCO Academy**  
Literacy education for all employees, role-specific training, and practical education
- OAiCO Seminar**  
Company-wide AI seminars featuring external experts
- OAiCO Workshop**  
Ideation sessions on generative AI utilization, and hands-on workshops on machine learning and data usage
- OAiCO Platform**  
Deployment of internal generative AI services, such as ChatGPT