

## Print Job Accounting



### Manage and track printer usage company-wide

Print Job Accounting from OKI increases the value of your printer fleet by providing an accurate picture of print activity and costs throughout the organisation.

This software not only enables your administrators to track print costs from individual users and groups, it can also prohibit non-authorized printing. This easy-to-use, server-based software, captures details such as colour vs. mono (black & white), pages printed, page size, paper types, paper trays used, document name and total time spent printing, by person or department. Having full visibility of your print and copy usage can assist in making informed decisions to manage costs, increase revenue and save resources.

#### Key Features

- Enables tracking of print costs and assists in the monitoring and control of print usage.
- A totally secure system – Job control authentication is stored on the printer, not on the network, therefore the system cannot be bypassed.
- Facilitates the tracking of print output by individual users or workgroups, and assigns monetary values to the documents they print. Useful for internal usage reports and bill-back purposes.

# Print Job Accounting

## Entering and managing print costs

Assign monthly cost limits to control and manage business costs. Fig 1, highlights the easy to use interface where cost is entered by an Administrator.



Fig 1. Entering Costs

## Easy analysis of captured data

Essential to Print Job Accounting software is how the data captured can be analysed. Fig 2 demonstrates the type of data logs captured by Print Job Accounting. The administrator would simply need to select the required data and hide unwanted data parameters ready for export into MS Excel for further analysis.

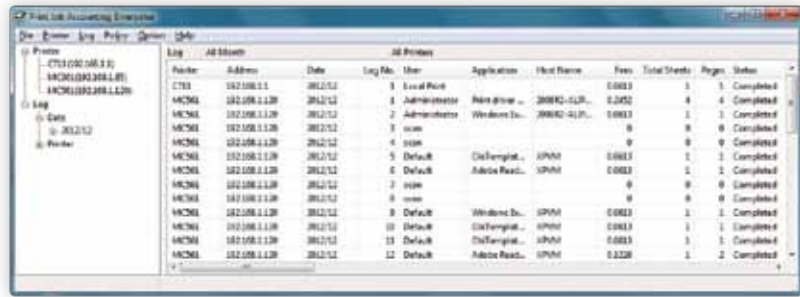


Fig 2. Example data logs

## Print Job Accounting Enterprise v Standard Print Job Accounting

	Standard	Enterprise
Number of OKI devices supported	Up to 50	Up to 1000
Number of users supported	Up to 5000	Up to 5000
Restrict colour printing by user, host computer name, software used, and URL	✓	✓
Flexibility to bill back user-defined fees or system automatically calculates fees based on actual supplies used	✓	✓
Ability to track and bill-back by individual or group	✓	✓
Ability to enforce individual print quotas	✓	✓
Automatic export of CSV files delivered by email	✓	✓
Ability to use external webpage to view individual print use		✓
Synchronise users with Active Directory, eliminating the need for manual data input		✓
Support for SQL databases		✓
Detailed accurate reporting by client for all print usage	✓	✓
Secure storage of user data for complete peace of mind		✓
Supports CAPM – Colour Access Policy Manager providing the administrator with even more control over colour printing		✓

## Specifications

### Print Job Accounting Server

Exclusively for OKI Digital Colour and Mono Printers/MFPs

### Operating Environments (Server)

Windows® 2008/2008 R2  
Windows® 2003 / 7 / Vista® / XP

### Print Job Accounting Client

Windows 7 (Popup for Client billing not supported)  
Windows Vista / XP  
Macintosh OS 9.0, 9.0.4, 9.1.X, 9.2.X  
(LaserWriter 8.7 required)  
Macintosh OS 8.1, 8.5X, 8.6X, 9.0, 9.0.4, 9.1.X, 9.2.X  
or greater [Adobe® PS™ 8.6 or greater required]  
Macintosh® OS 10.2 or greater

### Accounting/Reporting Features

Colour/Mono Page Tracking/Costing – 5 levels of colour coverage  
Paper Tracking/Costing (exports to CSV format; local I/F printer support)  
Client/Department Charge-back (exports to CSV format; local I/F printer support)



For further information on Print Job Accounting visit [www.okieurope.com/smartsolutions](http://www.okieurope.com/smartsolutions)

**OKI EUROPE LTD**  
Blays House, Wick Road,  
Egham Surrey, TW20 0HJ,  
UK  
T +44 (0)20 8219 2190  
F +44 (0)20 8219 2199  
[WWW.OKI.COM/EU](http://WWW.OKI.COM/EU)

**OKI**

Open up your dreams