

OKI

LD670

Utility User's Guide

1	INTRODUCTION	3
1.1	HISTORY	3
1.2	TRADEMARKS.....	3
1.3	OVERVIEW	3
1.4	OPERATING ENVIRONMENT	3
2	LBL32 INSTALLATION	5
3	LBL32 FUNCTIONS.....	5
3.1	STARTING UP LBL32	5
3.2	PRINTER FUNCTION SETTINGS	7
3.2.1	<i>Menus</i>	8
3.2.2	<i>Buttons</i>	9
3.2.3	<i>Paper Layout settings</i>	10
3.2.4	<i>Memory Switch settings</i>	12
3.2.5	<i>Customize Values</i>	14
3.2.6	<i>Others</i>	16
3.2.7	<i>Logo Registration screen</i>	18
4	OPERATING INSTRUCTIONS	19
4.1	PAPER LAYOUT SETTINGS	19
4.1.1	<i>Setting Paper Layout automatically</i>	19
4.1.2	<i>Setting Paper Layout manually</i>	20
4.2	RELEASING PAPER LAYOUT ERROR	22
4.3	ADJUSTING CUT POSITION/ADJUSTING TEAROFF POSITION	23
4.4	CHANGING PRINTER SETTINGS (MEMORY SWITCH, CUSTOMIZE VALUES, OTHERS)	24
4.5	REGISTERING LOGO	25

1 Introduction

1.1 History

June 2011 First Issued

1.2 Trademarks

The company and product names in this document may be trademarks or registered trademarks of their respective companies.

1.3 Overview

This document describes how to use LD670 Utility LBL32 (hereinafter called LBL32).

1.4 Operating environment

This the LD670 Utility LBL32 works with the environment as follows:

◆ Hardware

Personal computers equipped with the following interface ports, and supported to the Operating Systems (OS) below.

- Serial interface
- Centronics-compliant parallel interface
- USB interface
- LAN interface

◆ Operating Systems (OS)

- Microsoft® Windows® 2000 (*1)
- Microsoft® Windows® XP Professional (*2)
- Microsoft® Windows® XP Home Edition (*2)
- Microsoft® Windows Vista® Enterprise (*3)
- Microsoft® Windows Vista® Business (*3)
- Microsoft® Windows Vista® Ultimate (*3)
- Microsoft® Windows Vista® Home Premium (*3)
- Microsoft® Windows Vista® Home Basic (*3)
- Microsoft® Windows® 7 Ultimate (*4)
- Microsoft® Windows® 7 Enterprise (*4)
- Microsoft® Windows® 7 Professional (*4)
- Microsoft® Windows® 7 Home Premium (*4)
- Microsoft® Windows® 7 Starter (*4)
- Microsoft® Windows Server® 2003, Enterprise Edition (*5)
- Microsoft® Windows Server® 2003, Standard Edition (*5)
- Microsoft® Windows Server® 2008, Enterprise Edition (*6)
- Microsoft® Windows Server® 2008, Standard Edition (*6)
- Microsoft® Windows Server® 2008 R2, Enterprise Edition (*7)
- Microsoft® Windows Server® 2008 R2, Standard Edition (*7)

The 64bit Windows Operating System is also supported.

In this guide, the following abbreviations are used for the products.

- *1 : Windows 2000
- *2 : Windows XP
- *3 : Windows Vista
- *4 : Windows 7
- *5 : Windows Server 2003
- *6 : Windows Server 2008
- *7 : Windows Server 2008 R2

2 LBL32 Installation

Read 「4 Utility」 described in the LD670 Installation Guide.

3 LBL32 Functions

This chapter describes functions of the LD670 Utility LBL32.

The LD670 Utility LBL32 is a utility program to perform printer function settings and paper layout settings.

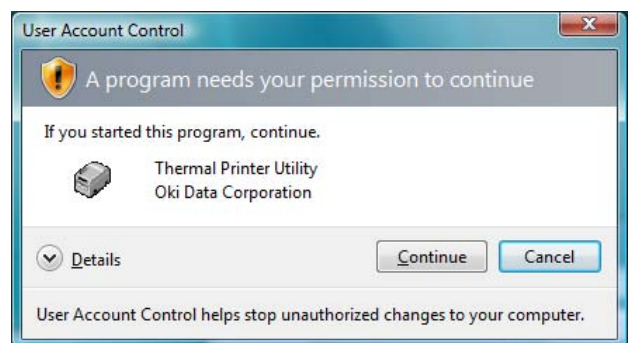
3.1 Starting up LBL32

1 Go to [Start]→[Programs](or[All Programs])→[Okidata]→[Utility]→[LD670 Utility].

2 Select the printer and click [OK].



* In a Windows 7, Windows 2008 R2, Windows Vista or Windows 2008 environment, the User Account Control dialog box may appear at Installation. If so, click [Yes] or [Continue].

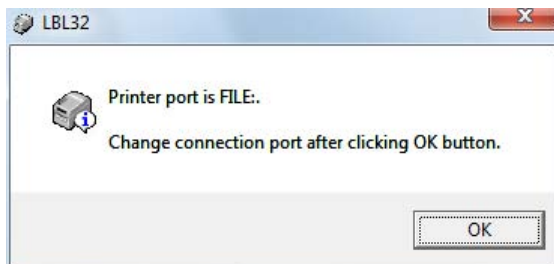


Notes

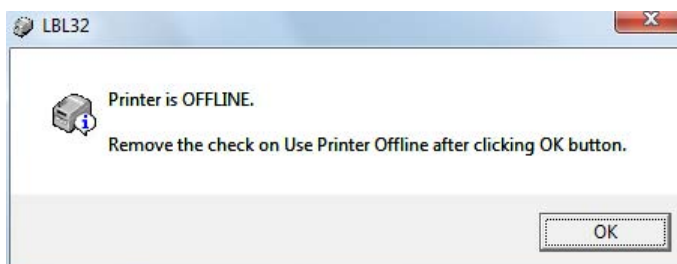
- Use LBL32 on the Serial, Parallel, USB or LAN interface connection.

Guide

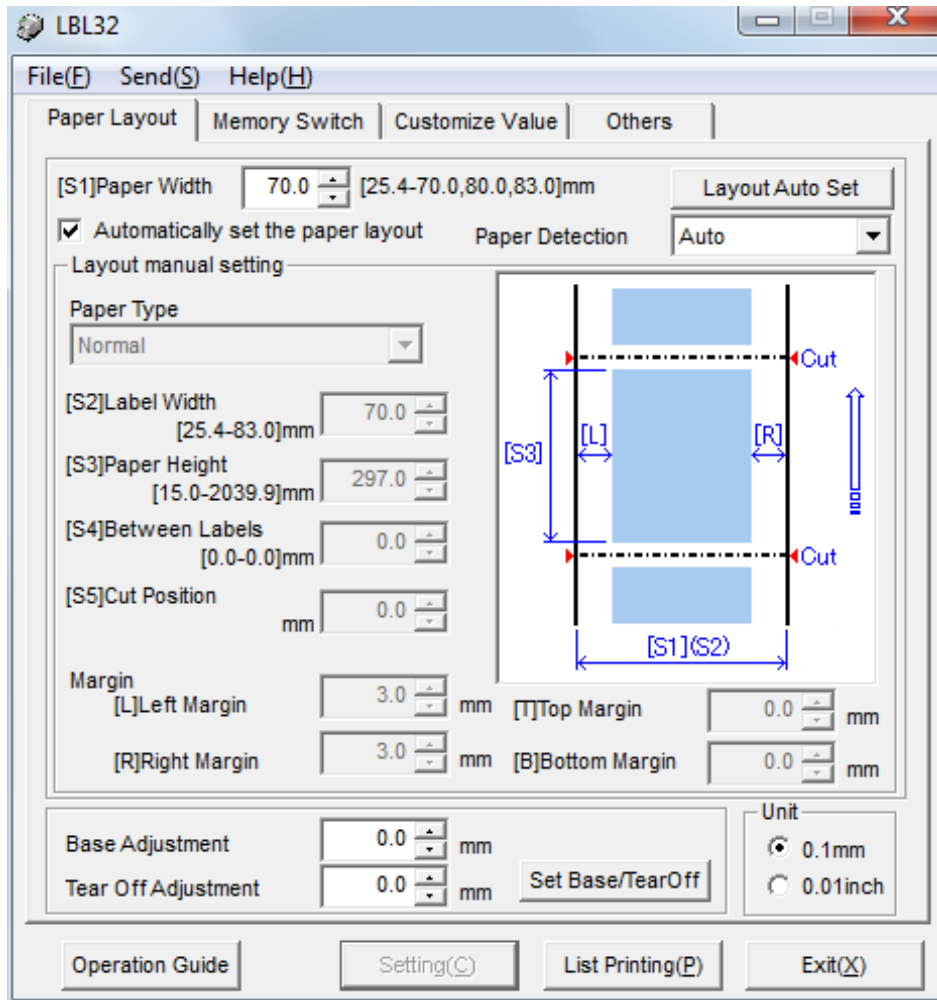
- When LBL32 is unavailable, warning marks are displayed on the name of printers. Select other printers.
- For LAN interface connection, use LPR port with the default port name (xxx.xxx.xxx.xxx:lp(*1)) created by the PR-PortManager. When you use LPR port with the non-default port name, IPP port, Windows Standard TCP/IP port, and Windows LPR port, LBL32 may not be operated correctly.
 - *1: xxx.xxx.xxx.xxx is IP address.
- If the connection port is “FILE:”, the following message is displayed. Click [OK] and check the connection.



- For USB interface connection, if the power of the printer is turned off, or if the printer driver in the Printer Folder is in the offline status, the following message may be displayed. Click [OK] and check the connection.



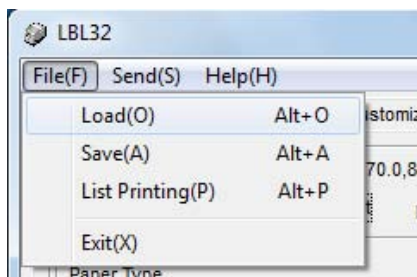
3.2 Printer function settings



[LBL32 Start screen]

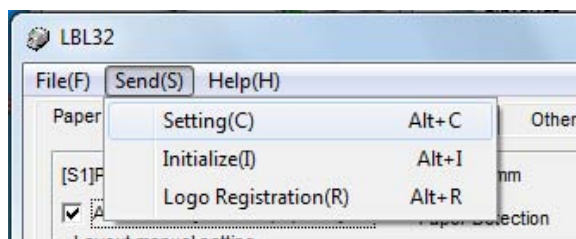
3.2.1 Menus

【File】 Menu

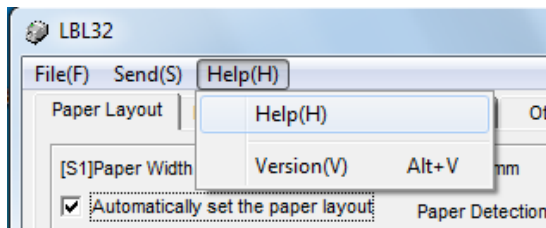


- Load(O) Alt+O
Reads the setting values file stored on the disk, and then updates the setting values file on LBL32.
- Save(A) Alt+A
Saves the setting values displayed on LBL32 to the disk as the setting values files.
- List Printing(P) Alt+P
Prints the list of the current setting values.
- Exit(X)
Exits LBL32.

【Send】 Menu



- Setting(C) Alt+C
Transfers the setting information specified in the [Memory Switch] dialog box, the [Customize Values] dialog box, and the [Others] dialog box to the printer.
- Initialize(I) Alt+I
Initializes the setting values on LBL32.
In this time, the Printer Setting information is also initialized.
However, the information in the [Paper layout] dialog box and the printer paper layout are not initialized.
- Logo Registration(R) Alt+R
Registers logos to the printer. Logos are registered even after the power of the printer is turned off.
Logos can be registered are up to 5 pieces.
Only BMP file can be registered here.
* Please refer to "3.2.7 Logo Registration screen" for the operation of the logo registration.

【Help】 Menus

- Help(H)
Starts up the Help for the LBL32.
- Version(V) Alt+V
Displays the version of the LBL32.

3.2.2 Buttons**【Setting(C)】**

The feature is the equivalent to the 「Setting(C)」 in the "Send" menu.

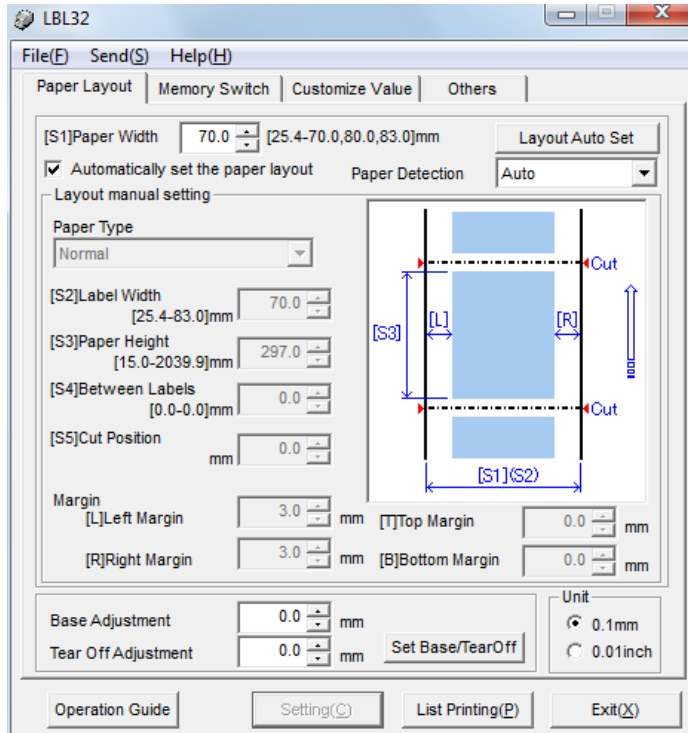
【List Printing(P)】

The feature is the equivalent to the 「List Printing(P)」 in the "File" menu.

【Exit(X)】

Exits LBL32.

3.2.3 Paper Layout settings



In the [Paper Layout] dialog box, perform Paper Layout settings and Automatic Paper Layout settings.

【Items to enter】

Items	Explanation
Paper Type	Select the paper type you intend to use. - Normal: Select Normal to use. - Label: Select Label to use. - Black Mark: Select Black Mark to use.
[S1] Paper Width	Specify the width of the paper.
[S2] Label Width	Specify the width of the label.
[S3] Paper Height	Specify the height of the paper.
[S4] Between Labels	Specify the length between labels when the Label is selected.
[S4] BM Length	Specify the length of Black Mark when the Black Mark is selected.
[S5] Cut Position	Specify the cut position.
[L] Left Margin	Specify the left margin.
[R] Right Margin	Specify the right margin.
[T] Top Margin	Specify the top margin.
[B] Bottom Margin	Specify the bottom margin.

【Operating instructions】

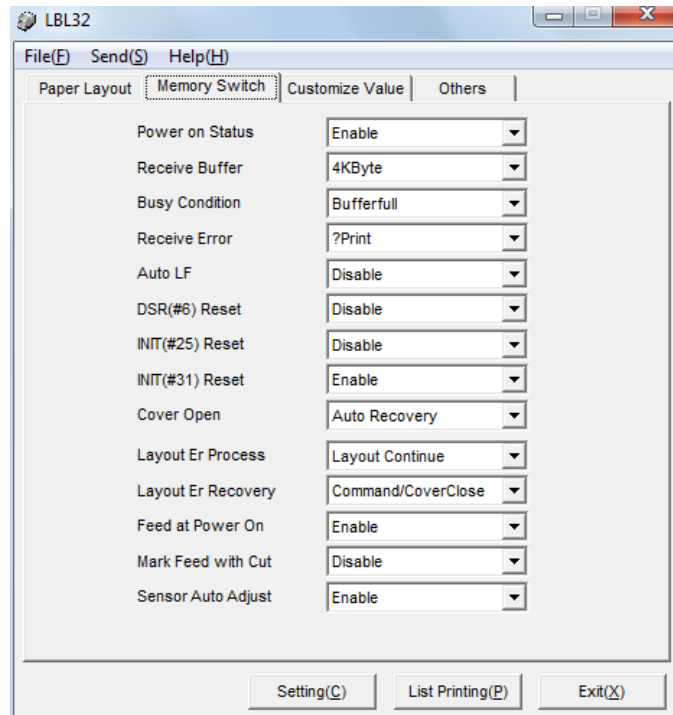
Items	Explanation
[Set Layout] button	Transfers the layout information entered ([S2],[S3],[S4],[S5],[L],[R],[T],[B]) to the printer. Uncheck the [Automatically set the paper layout] check box to use this feature. Setting of [S1]Paper Width is also transferred to the printer.
[Layout Auto set] button	Performs Automatic Paper Layout setting for the paper set in the printer. [S1] Setting information of the paper width is also transferred to the printer.
[Paper Detection]	Specifies whether the paper type is detected by the automatic operation or it uses it by specific paper type fixation. When it sets to "Auto" and the layout is set automatically, paper type (*1) is detected by the automatic operation. Next, layout (*2) is detected by the automatic operation. When it sets besides "Auto" and the layout is set automatically, only layout (*2) is detected by the automatic operation for paper type (*1) selected by this item. When [Automatically set the paper layout] is checked, this item becomes possible to select. *When a set value is changed, the message to confirm the content of the change is displayed. When setting it besides "Auto" If different paper type (*1) is set, "Form layout error" is generated. *1: "paper type" shows the paper type such as Label, Black Mark, and Normal. *2: "layout" shows the size of the form like the height of the label and the length between labels, etc.
[Automatically set the paper layout] check box	Checked: The 「Set Layout」 button is unavailable. The [Layout Auto set] button is available. [S2],[S3],[S4],[S5],[L],[R],[T],[B] settings are unavailable. Unchecked: The 「Set Layout」 button is available. The [Layout Auto set] button is unavailable. [S2],[S3],[S4],[S5],[L],[R],[T],[B] settings are available.
[Set Base/TearOff] button	Transfers the values entered into the Cut Position Adjustment, TearOff Position Adjustment to the printer.
[Operation Guide] button	Displays operating instructions for paper layout setting.
Unit	Switches the unit of values between mm and inch.

*Depending on the specified Paper width (the Label width) , Paper Height and Margin , the settings information may not be reflected to the printer correctly even after executing [Set Layout] to set the paper layout.

Specify 12.0mm or more for the width and specify 3.8mm or more for the height.

*When the value of "[S5]Cut Position + [T]Top" exceeds the value of "[S3]Paper Height", the setting change of paper layout may not influence the printer setting.

3.2.4 Memory Switch settings



In the [Memory Switch] dialog box, set the details of the Memory Switch and the paper.

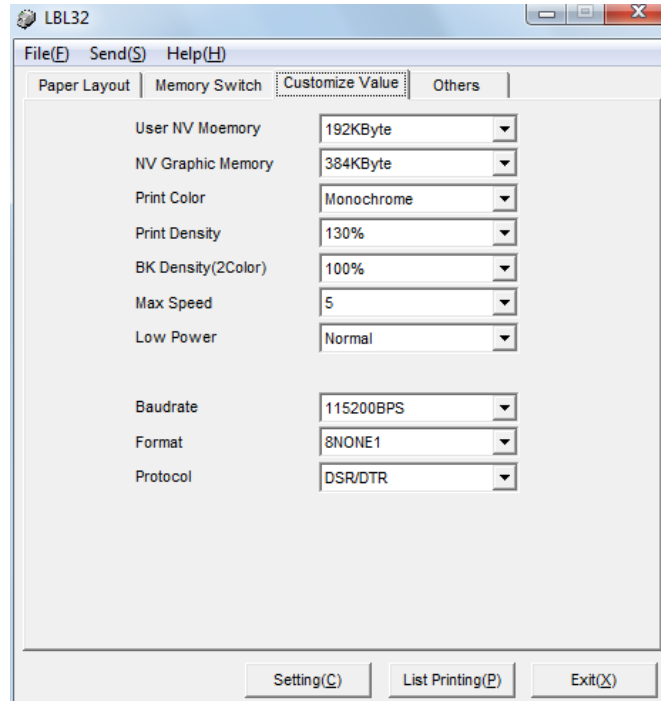
【Items to setup for Memory Switch】

Items	Setup values	Initial value	Explanation
Power ON Status	-Disable -Enable	Enable	Set the message about the power supply for host.
Receive Buffer	-4Kbyte -45byte	4Kbyte	Set the size of the receive buffer.
Busy Condition	-Offline/Bufferfull -Bufferfull	Bufferfull	Set the condition of Printer BUSY.
Receive Error	- ? printing -Ignore	? printing	Set the handling for the Receive error (Parity check error, Flaming error, Overrun error).
Auto LF	-Disable -Enable	Disable	Set the Auto linefeed by the CR Cord Receive.
DSR (#6) Reset	-Disable -Enable	Disable	Set the reset signal for this signal.
INIT(#25) Reset	-Disable -Enable	Disable	Set the reset signal for this signal.
INIT(#31) Reset	-Disable -Enable	Enable	Set the reset signal for this signal.
Cover Open	-Auto Recovery -Recovery by Command	Auto Recovery	Set the recovery steps for the Cover Open during printing. Notes) If you continue printing after cover close, select the [Auto Recovery].

【Items to setup for Papers】

Items	Setup values	Initial values	Explanation
Layout Er Process	-Layout Continue -Layout Clear	Layout Continue	Set the handlings for Paper Layout error. When [Layout Clear] is selected, Automatic Paper Layout Setting is executed after releasing the error.
Layout Er Recovery	-Command / CoverClose -Command	Command / Cover close	Set the condition to release Paper Layout Error.
Feed at Power On	-Enable -Disable	Enable	Set to detect the top of form at power-on. When the Normal paper is selected to print, [Enable] is invalid.
Mark Feed with Cut	-Disable -Enable	Disable	Set to cut the top of form. When the Normal paper is selected to print, [Enable] is invalid. Pressing FEED key does not run this feature. Notes) When [Enable] is selected, feeds the paper and cuts the top of form even if there are Black Mark and Label on the sensor.
Sensor Auto Adjust	-Disable -Enable	Enable	Set to perform Automatic Sensor Adjustment during the Automatic Paper Layout Setting.

3.2.5 Customize Values



In the [Customize values] dialog box, setup the details of Customize Values and the Serial interface communication.

【Items to setup for Custom Values】

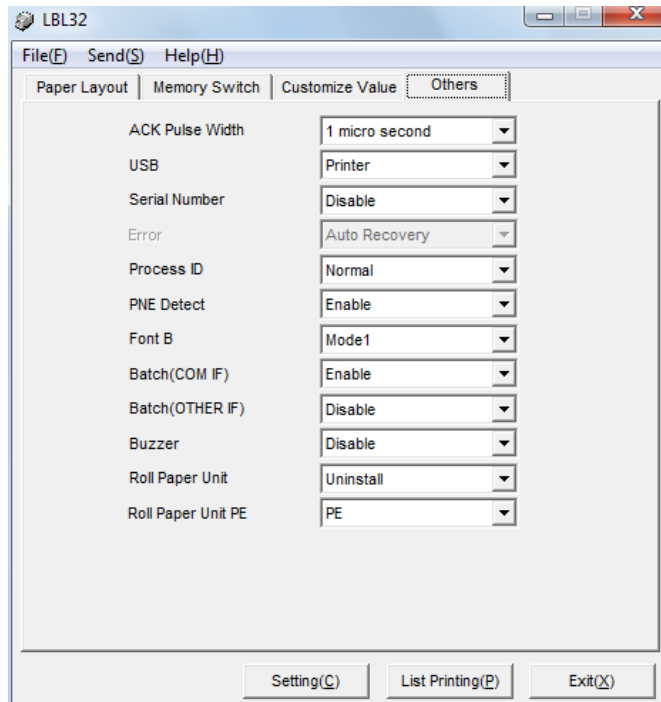
Items	Setup values	Initial values	Explanation
User NV Memory	-1KB -64KB -128KB -192KB	192KB	Set the size of available NV memory.
NV Graphic Memory	-None -64K bytes -128K bytes -192K bytes -256K bytes -320K bytes -384K bytes	384K bytes	Set the size of graphic memory.
Print Color	-Monochrome -Two	Monochrome	Set the Print Color. Notes) Select [Two] for 2 Color printing.
Print Density	70% - 130% (Unit: 5%)	130%	Set the Print Density. Notes) Adjust the Print Density depends on the paper you intend to use.
BK Density (2Color)	70% - 130% (Unit: 5%)	100%	Set the Black Density for 2 Color printing. Notes) Adjust the BK Density depends on the paper you intend to use.

Items	Setup values	Initial values	Explanation
Max Speed	1 - 9	5	Set the highest print speed.
Low Power	-Normal -Mode1 -Mode2	Normal	Set the power consumption. Notes) If you select Mode 1 or Mode 2, the print quality and the print speed may be degraded.

【Items to setup for Serial interface communication】

Items	Setup values	Initial values	Explanation
Baudrate	-2400BPS -4800BPS -9600BPS -19200BPS -38400BPS -57600BPS -115200BPS	115200BPS	Set the Baud Rate (Communication speed).
Format	-7NONE1 -7ODD1 -8NONE1 -8EVEN1 -8ODD1	8NONE1	Set the data format (Data bit, Parity, Stop bit). Stop bit is fixed as 1bit.
Protocol	-DSR/DTR -XON/XOFF	DSR/DTR	Set buffer control protocol. Notes) When printing from Windows on the LD670 printer connected with the serial interface, [DSR/DTR] is recommended to set.

3.2.6 Others



In the [Others] dialog box, setup others.

【Items to setup for Others】

Items	Setup values	Initial values	Explanation
ACK Pulse Width	-1 micro second -8 micro second	1 micro second	Set the Pulse Width for ACK signals.
USB	-V-COM -printer	Printer	Set the operating class for USB port connection. Notes) In general, select [Printer] without change.
Serial Numbers	• Enable • Disable	Disable	Set the Serial Numbers Notice on the USB port connection.
Error	-Auto Recovery -Recovery by Command	Auto Recovery	Select [Auto Recovery] for the Windows Driver.
Process ID	-Normal -High-Speed	Normal	Select [Normal] for the Windows Driver.
PNE Detect	-Disable -Enable	Enable	Set to detect Paper Near End.
FontB	-Mode1 -Mode2	Mode1	Select the mode of font B.
Batch (COM IF)	-Disable -Enable	Enable	Set the print mode for Serial interface connection. When [Disable] is selected, the print speed may be improved.
Batch (OTHER IF)	-Disable -Enable	Disable	Set the print mode for USB, Parallel and LAN interface connection. When [Enable] is selected, the print speed may be improved.

Items	Setting values	Initial values	Explanation
Buzzer	-Disable -Enable	Disable	Set the buzzer beep for error.
Roll Paper Unit	-Uninstall -Install	Uninstall	Set whether Roll Paper Unit is equipped. *When the setup is not appropriate, the Paper Near End can not be detected correctly. *When [Install] is selected, do not connect the Drawer to LD670. LD670 may not work correctly.
Roll Paper Unit PE	-PE -PNE	PE	Specifies the PE detection condition when the roll paper unit is installed. If PNE is detected, it becomes PE when setting it to [PNE]. The installing setting of the roll paper unit is done, installed, and when the Paper type is Normal, this setting becomes effective.

3.2.7 Logo Registration screen

In the [Logo registration] screen, register logos to the printer.

Go to [Send(S)]→[Logo Registration(R)] to display the screen.

【Items in Logo Registration screen】

Items	Explanation
Logo1 – Logo5	Registers Logos up to 5pieces.
[2Color]button	On registering the 2 Color logo, check the button. The color except white or black is registered as second color.
[Refer]button	Displays the File menus to choose the BMP file.
[Delete]button	Deletes the logo stored here.
[Regist]button	Registers logos here.
[Print]button	Prints the registered logos.
[Confirmation Print]button	Prints the registered logo1-5.
[Exit]button	Exits the [Logo registration] dialog box.

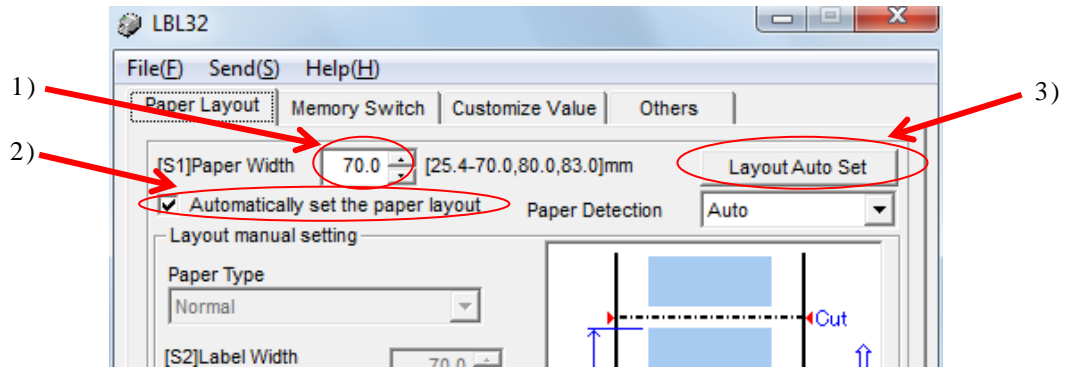
- * Only BMP file can be registered.
- * Create 2 Color logo by 16 color or 256 color.
- * Recommended file size is 640×400 pixel at the maximum.

4 Operating instructions

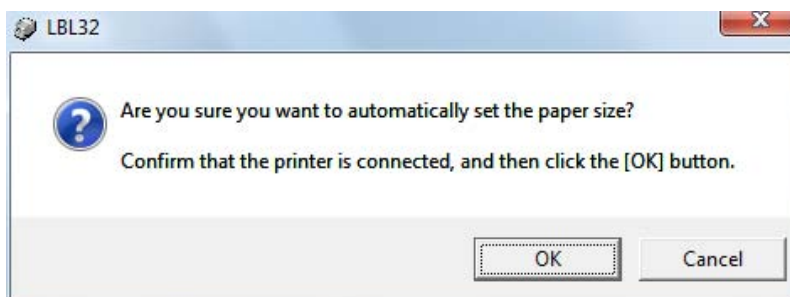
4.1 Paper Layout settings

Set Paper Layout on the “Paper Layout” dialog box.

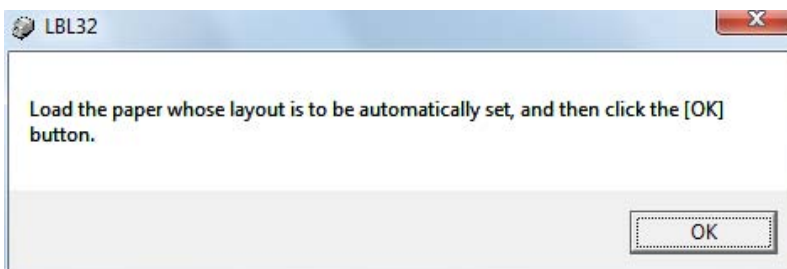
4.1.1 Setting Paper Layout automatically



- 1) Enter paper width into the [[S1]Paper Width].
- 2) Check the [Automatically set the paper layout] check box.
- 3) Click the [Layout Auto Set] button.
- 4) The following message is displayed. Click [OK] to continue, or click [Cancel] to discontinue.



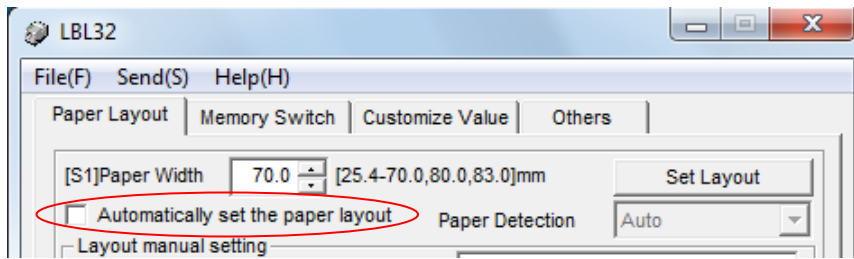
- 5) The message for changing the paper you intend to perform the Automatic Paper settings is displayed. Change the paper and click [OK].



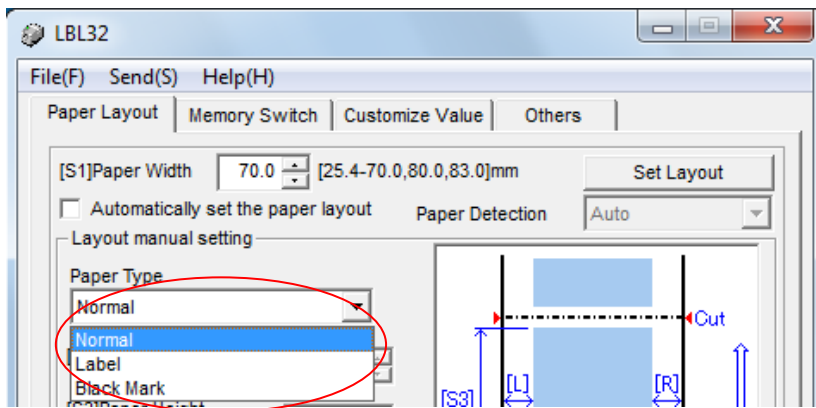
- 6) The Automatic Paper Layout setting is executed.
When the sensor checks Paper Layout, dozens of centimeters of paper comes out from the printer.

4.1.2 Setting Paper Layout manually

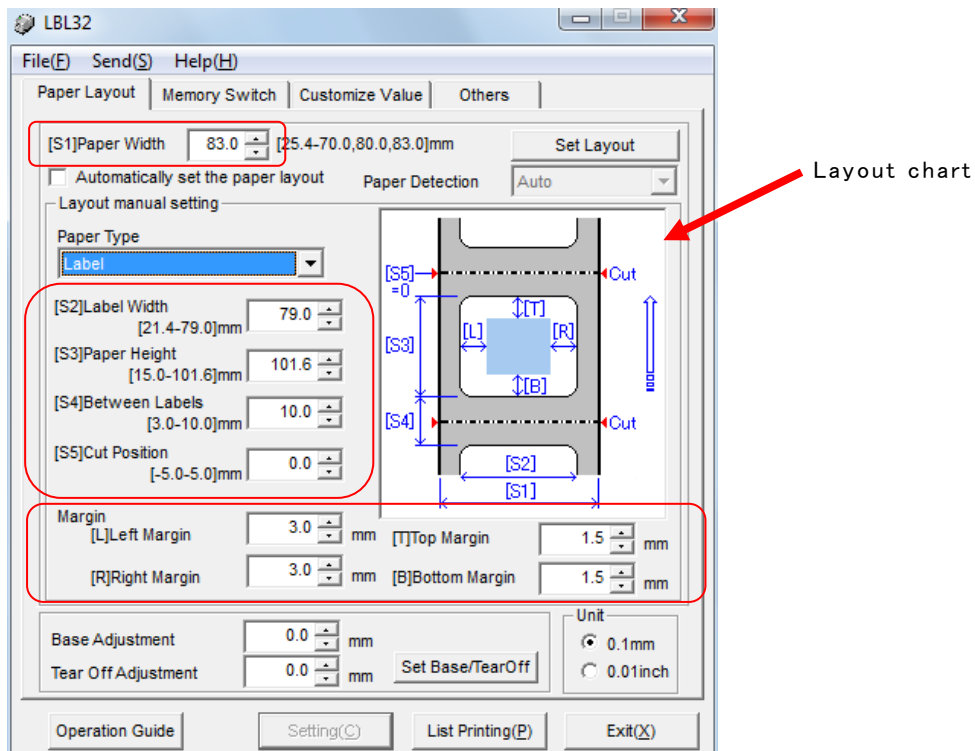
- 1) Uncheck the [Automatically set the paper layout] check box.



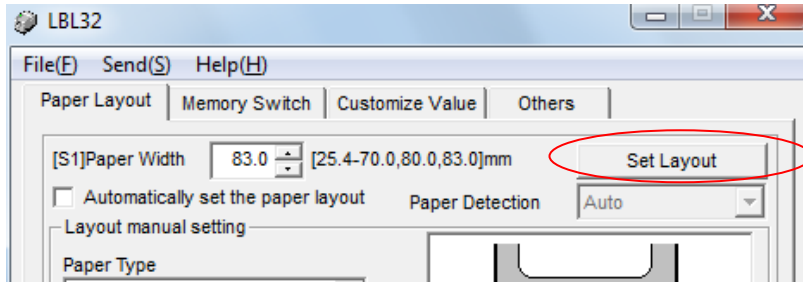
- 2) Select the paper you intend to set layout under [Paper Type].



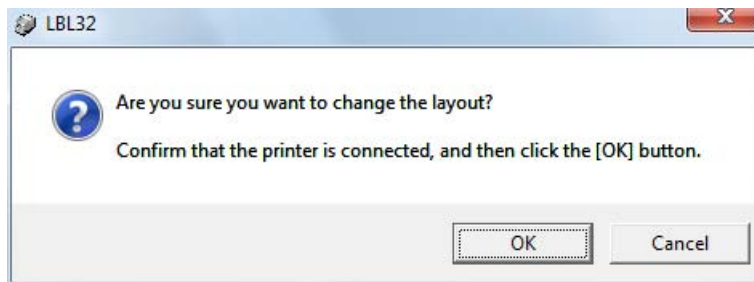
- 3) Refer to the displayed layout chart to measure the size of paper, and then enter the details.
(The picture shows when the Label is selected.)



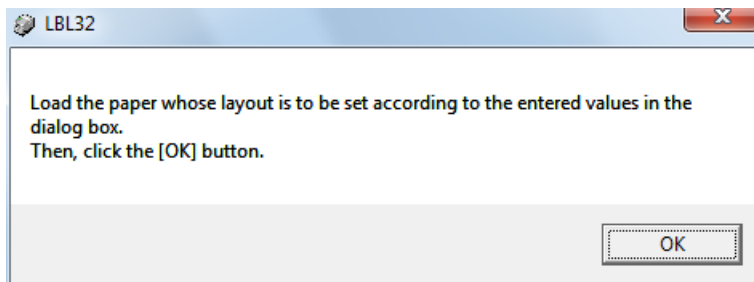
4) Click [Set Layout] button.



5) The following message is displayed. Click [OK] to continue, or click [Cancel] to discontinue.



6) The message for exchanging the paper you intend to set the layout is displayed.



7) Change the paper and click [OK].

8) The printer executes the initial action. When the paper other than the Normal is selected, it detects the top of form.

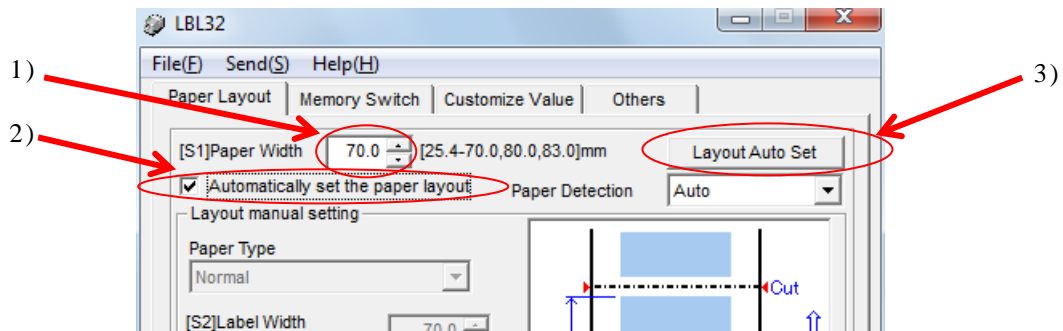
4.2 Releasing Paper Layout error

When you change the paper before pressing the [Layout Auto Set] button or the [Set Layout] button, Paper Layout Error may occur. Follow the steps below to handle this problem.

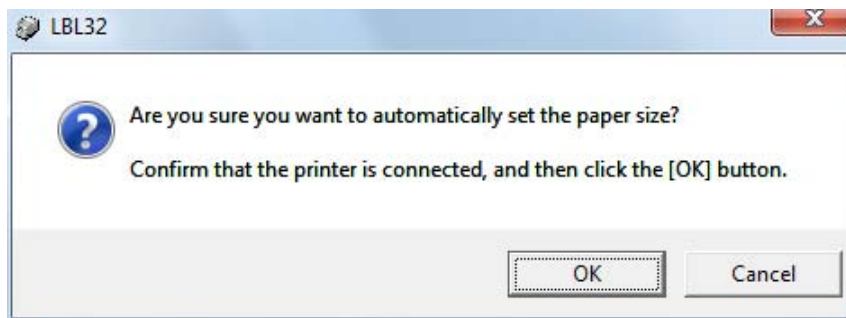
Operation 1

- 1) Hold down the FEED switch of the printer for 2 seconds.
- 2) The printer performs Automatic Paper Layout Settings and releases the Paper Layout Error.

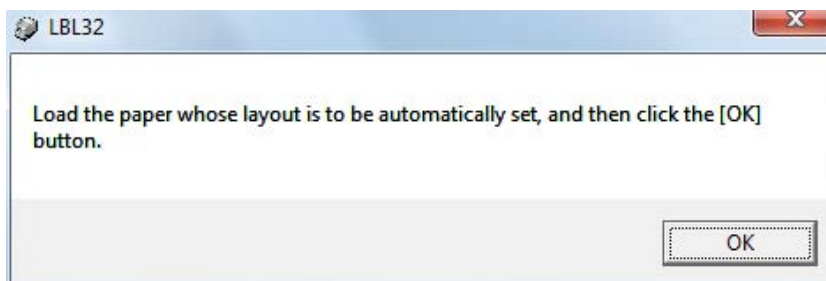
Operation 2



- 1) Enter paper width into the [[S1]Paper Width].
- 2) Check the [Automatically set the paper layout] check box.
- 3) Click the [Layout Auto Set] button.
- 4) The confirmation message for Automatic settings is displayed. Click [OK].



- 5) The message for changing paper is displayed. Click [OK].



- 6) The printer performs Automatic Paper Layout and releases Paper Layout Error.

* When Paper Layout Error is released by these operations, you do not need to execute Paper Layout Settings again. However, do the manual setting when fine-tuning is necessary for the layout set automatically.

4.3 Adjusting Cut Position/Adjusting TearOff Position

It adjusts the Print Position finely with reference to the Cut Position in a vertical direction. The cut position, peeling-off position, and print position moves in a vertical direction by this setting.
[Cut Position Adjustment]

To move the cut position, peeling-off position, and print position upward or downward with the set value.

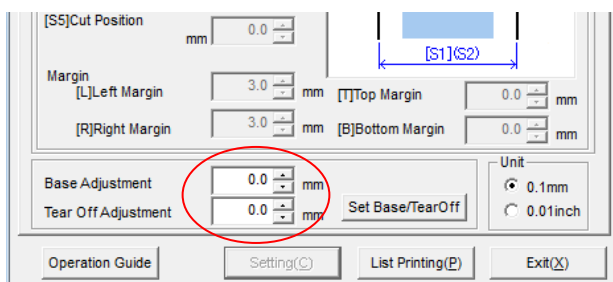
[Tear Off Adjustment]

To move the Tear Off position upward or downward with the set value.

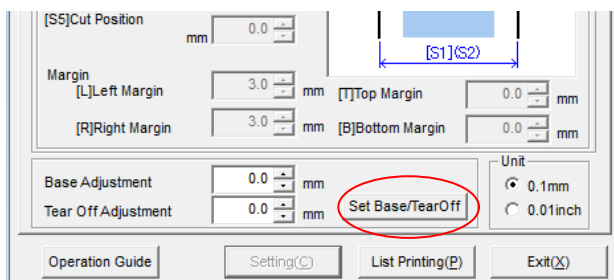
1) Enter the adjustment values.

When the plus(+) value is set, the Cut Position or the Tear Off position moves opposite(downward) direction against the paper feeding direction.

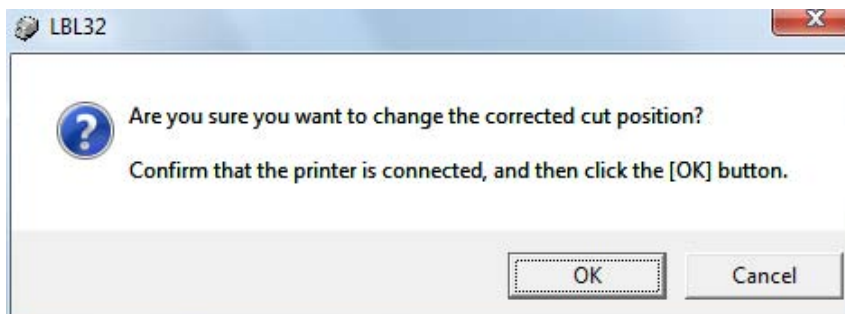
When the minus(-) value is set, the Cut Position or the Tear Off position moves the same(upward) direction as the paper feeding direction.



2) Click [Set Base/TearOff].



3) The following message is displayed. Click [OK] to continue, or click [Cancel] to discontinue.

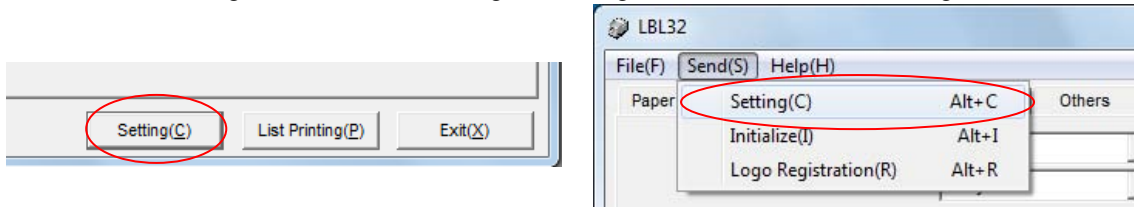


4) When Settings are completed, the printer executes the initial action.

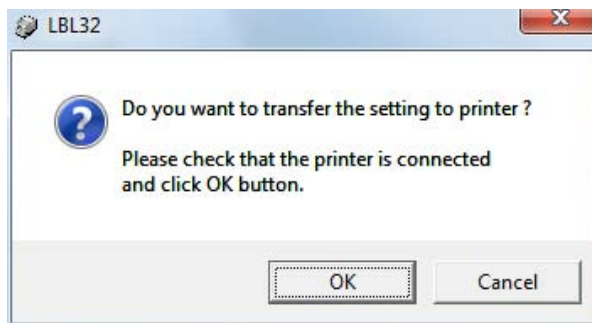
4.4 Changing printer settings (Memory Switch, Customize Values, Others)

It transfers and stores the setting information specified in the [Memory Switch] dialog box, the [Customize Values] dialog box and the [Others] dialog box.

- 1) Change the settings in the [Memory Switch] dialog box, [Customize Values] dialog box and the [Others] dialog box. Click [Setting(C)], or go to [Send(S)]→[Setting(C)].

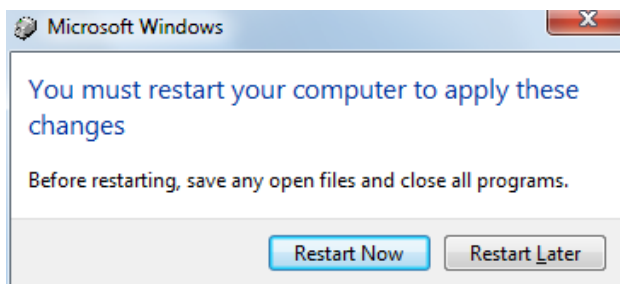
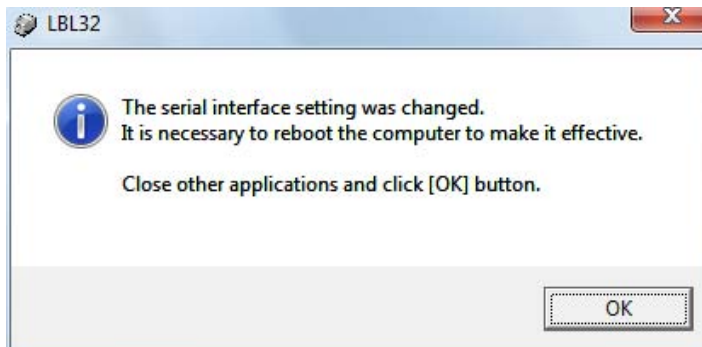


- 2) The confirmation message for changing setting values is displayed. Click [OK] .



- 3) When Settings are completed, the printer executes the initial action.
- 4) When the Serial Interface Settings are changed, the following message is displayed. Restart the system to valid the change.

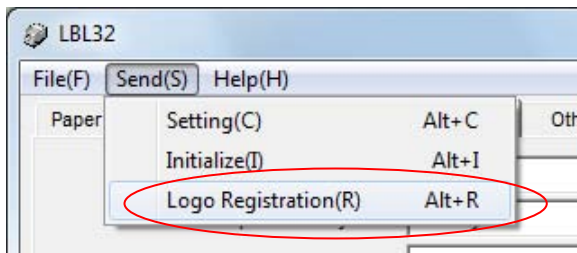
Exit the other software applications (Save live files.) and then click [OK].



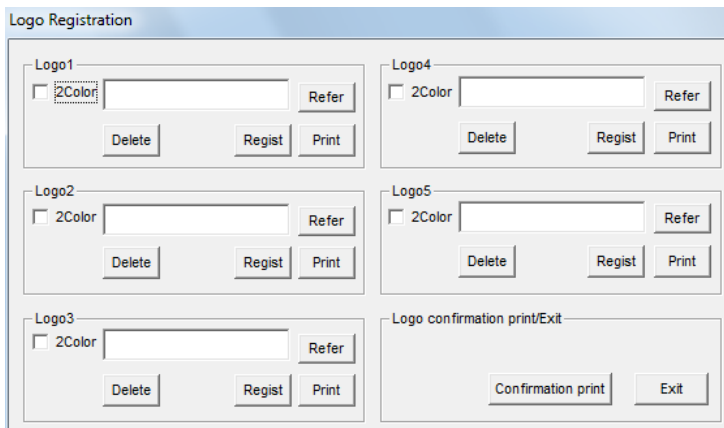
4.5 Registering Logo

It registers logos to the printers. Logos are registered even after the power of the printer is turned off.

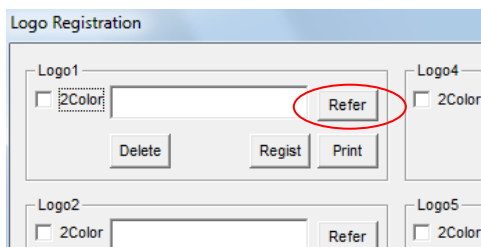
- 1) Go to [Send(S)] → [Logo Registration(R)].



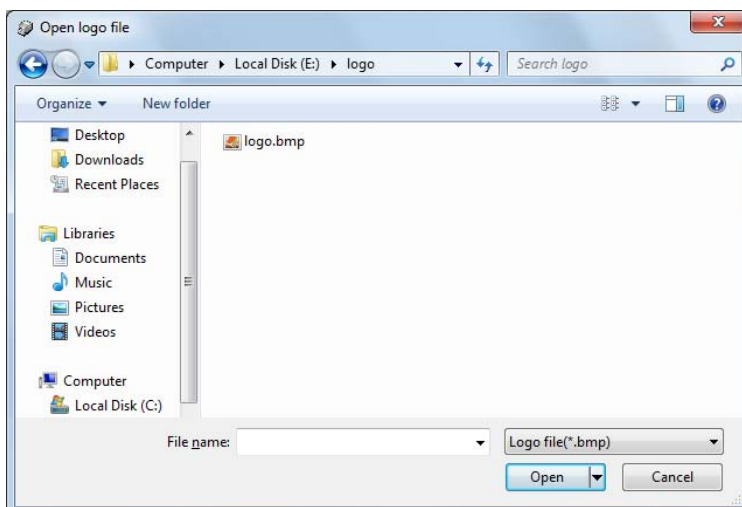
- 2) The [Logo Registration] dialog box is displayed.



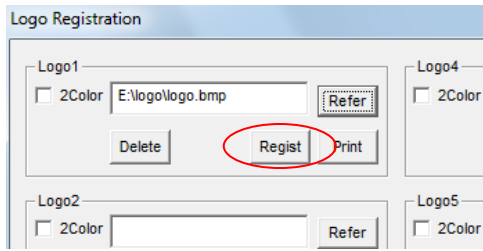
- 3) Select the logo number from 1 - 5 to register and click its [Refer].



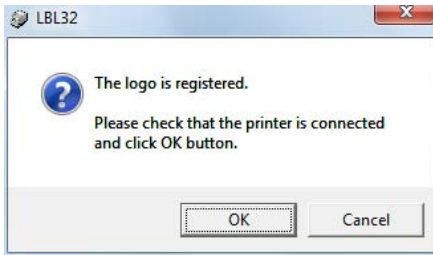
- 4) Select the BMP file to register the logo.



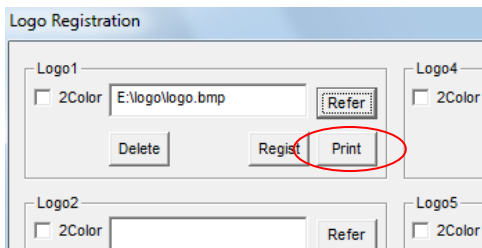
5) Click [Regist].



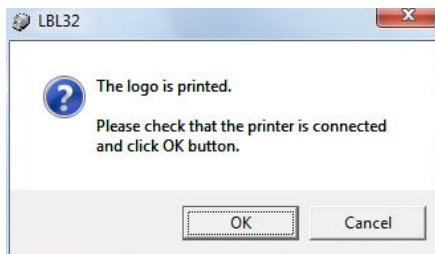
6) The confirmation message for registering logo is displayed. Click [OK] to continue, or click [Cancel] to discontinue.



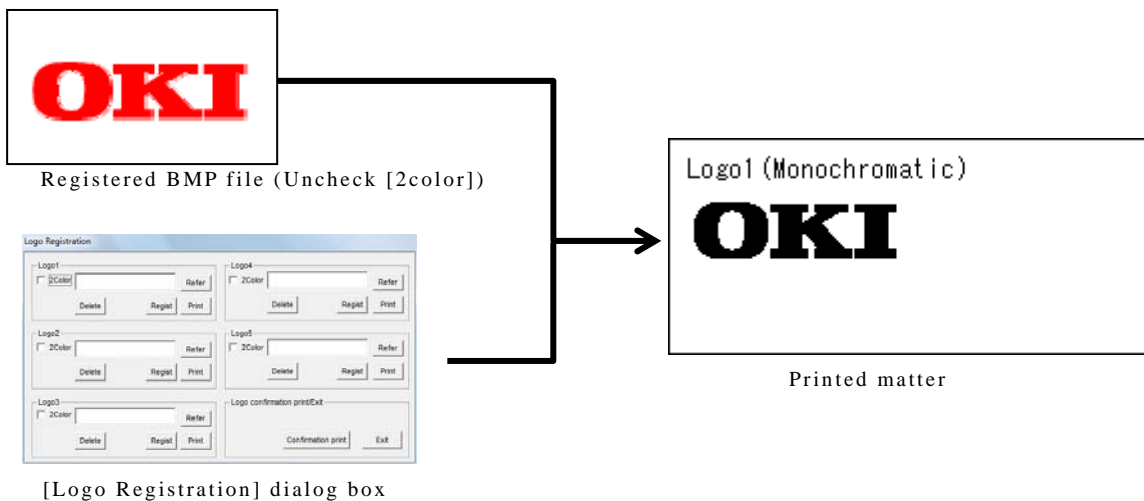
7) Click [Print] to print the logo. Check that the logo is registered correctly.



8) The confirmation message for printing is displayed. Click [OK] to continue, or click [Cancel] to discontinue.

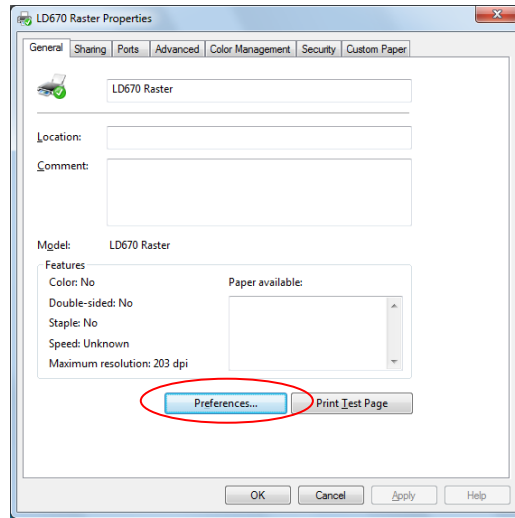


When the following BMP file is registered, printed matter is shown in a right picture.

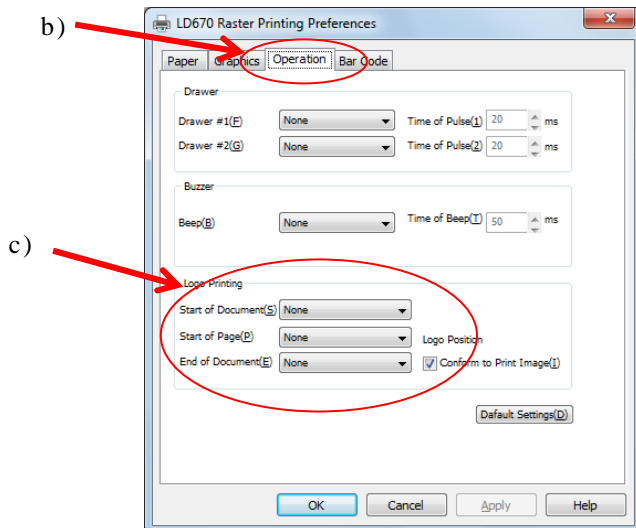


9) The logo registered here can be printed on the print beginning position, each top of the page, and the print end position at any time by setting the printer driver.

a) The property of the printer driver of LD670 Raster is displayed, and the print setting is clicked.

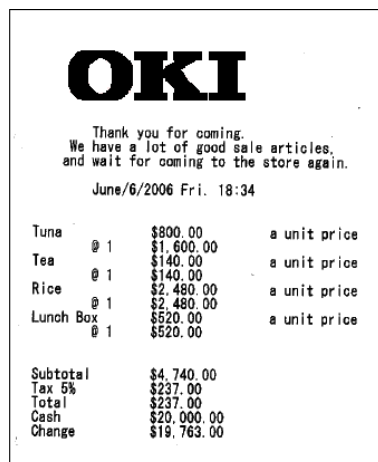


b) Select the [Operation] tab.



c) The printing position of the registered logo is set by [Logo Printing].

d) It is possible to print as follows printed matter by using the Windows driver.



* Refer to "LD670 Windows printer driver user's guide" for details about the printer driver operation.

Oki contact details

OkicontactName. Oki Systems (UK) Limited

OkicontactAddress.550 Dundee Road
Slough Trading Estate
Slough
Berkshire
SL1 4LE

Tel:+44 (0) 1753 819819
Fax:+44 (0) 1753 819899
<http://www.oki.co.uk>

Oki Systems Ireland Limited

The Square Industrial Complex
Tallaght
Dublin 24

Tel:+353 (0) 1 4049590
Fax:+353 (0)1 4049591
<http://www.oki.ie>

Oki Systems Ireland Limited - Northern Ireland

19 Ferndale Avenue
Glengormley
BT36 5AL
Northern Ireland

Tel:+44 (0) 7767 271447
Fax:+44 (0) 1 404 9520
<http://www.oki.ie>

Technical Support for all Ireland:

Tel:+353 1 4049570
Fax:+353 1 4049555
E-mail: tech.support@oki.ie

Oki Systems (Czech and Slovak), s.r.o.

IBC – Pobřežní 3
186 00 Praha 8
Czech Republic

Tel: +420 224 890158
Fax:+420 22 232 6621
Website: www.oki.cz, www.oki.sk

Oki Systems (Deutschland) GmbH

Hansaallee 187
40549 Düsseldorf

Tel: 01805/6544357**
01805/OKIHELP**
Fax: +49 (0) 211 59 33 45
Website:
www.okiprintingsolutions.de
info@oki.de

**0,14€/Minute aus dem dt. Festnetz
der T-Com (Stand 11.2008)

Διανομέας των συστημάτων OKI

CPI S.A1 Rafailidou str.
177 78 Tavros
Athens
Greece

Tel: +30 210 48 05 800
Fax:+30 210 48 05 801
EMail:sales@cpi.gr

Oki Systems (Iberica), S.A.U

C/Teide, 3
San Sebastian de los Reyes
28703, Madrid

Tel:+34 91 3431620
Fax: +34 91-3431624
Atención al cliente: 902 36 00 36
Website: www.oki.es

Oki Systèmes (France) S.A.

44-50 Av. du Général de Gaulle
94246 L'Hay les Roses
Paris

Tel:+33 01 46 15 80 00
Télécopie:+33 01 46 15 80 60
Website: www.oki.fr

OKI Systems (Magyarország) Kft.

Capital Square
Tower 2
7th Floor
H-1133 Budapest,
Váci út 76
Hungary

Telefon: +36 1 814 8000
Telefax: +36 1 814 8009
Website: www.oki.hu

OKI Systems (Italia) S.p.A.

via Milano, 11,
20084 Lacchiarella (MI)

Tel:+39 (0) 2 900261
Fax:+39 (0) 2 90026344
Website: www.oki.it

OKI Printing Solutions

Platinum Business Park II, 3rd Floor
ul. Domaniewska 42
02-672 Warsaw
Poland

Tel:+48 22 448 65 00
Fax:+48 22 448 65 01
Website: www.oki.com.pl
E-mail: oki@oki.com.pl
Hotline: 0800 120066
E-mail: tech@oki.com.pl

Oki Systems (Ibérica) S.A.

Sucursal Portugal
Edifício Prime -
Av. Quinta Grande 53
7º C Alfragide
2614-521 Amadora
Portugal

Tel:+351 21 470 4200
Fax:+351 21 470 4201
Website:www.oki.pt
E-mail : oki@oki.pt

Oki Service

Serviço de apoio técnico ao Cliente

Tel: 808 200 197
E-mail : okiserv@oki.pt

OKI Europe Ltd. (Russia)

Office 702, Bldg 1
Zagorodnoye shosse
117152, Moscow

Tel: +74 095 258 6065
Fax: +74 095 258 6070
e-mail: info@oki.ru
Website: www.oki.ru

Technical support:

Tel: +7 495 564 8421
e-mail: tech@oki.ru

Oki Systems (Österreich)

Campus 21
Businesszentrum Wien Sued
Liebermannstrasse A02 603
22345 Brun am Gebirge

Tel: +43 223 6677 110
Drucker Support:
+43 (0) 2236 677110-501
Fax Support:
+43 (0) 2236 677110-502
Website: www.oki.at

OKI Europe Ltd. (Ukraine)

Raisy Opkinoy Street,8
Building B, 2nd Floor,
Kiev 02002
Ukraine

Tel: +380 44 537 5288
e-mail: info@oki.ua
Website: www.oki.ua

OKI Sistem ve Yazıcı Çözümleri Tic. Ltd. Şti.

Harman sok Duran Is Merkezi,
No:4, Kat:6,
34394, Levent
İstanbul

Tel: +90 212 279 2393
Faks: +90 212 279 2366
Web: www.oki.com.tr
www.okiprintingsolutions.com.tr

Oki Systems (Belgium)

Medialaan 24
1800 Vilvoorde

Helpdesk: 02-2574620
Fax: 02 2531848
Website: www.oki.be

AlphaLink Bulgaria Ltd.

2 Kukush Str.
Building "Antim Tower", fl. 6
1463 Sofia, Bulgaria

tel: +359 2 821 1160
fax: +359 2 821 1193
Website: <http://bulgaria.oki.com>

OKI Printing Solutions

Herstedøstervej 27
2620 Albertslund
Danmark

Adm.: +45 43 66 65 00
Hotline: +45 43 66 65 40
Salg: +45 43 66 65 30
Fax: +45 43 66 65 90
Website: www.oki.dk

OKI Systems (Finland) Oy

Polaris Capella
Vänrikinkuja 3
02600 Espoo

Tel: +358 (0) 207 900 800
Fax: +358 (0) 207 900 809
Website: www.oki.fi

OKI Systems (Holland) b.v.

Neptunstraat 27-29
2132 JA Hoofddorp

Helpdesk: 0800 5667654
Tel: +31 (0) 23 55 63 740
Fax: +31 (0) 23 55 63 750
Website: www.oki.nl

OKI Systems (Norway) AS

Tevlingveien 23
N-1081 Oslo

Tel: +47 (0) 63 89 36 00
Telefax: +47 (0) 63 89 36 01
Ordrefax: +47 (0) 63 89 36 02
Website: www.oki.no

**General Systems S.R.L.
(Romania)**

Sos. Bucuresti-Ploiesti Nr. 135.
Bucharest 1
Romania

Tel: +40 21 303 3138
Fax: +40 21303 3150
Website: http://romania.oki.com

Var vänlig kontakta din Återförsäljare
i första hand, för konsultation. I
andra hand kontakta

OKI Systems (Sweden) AB

Borgafjordsgatan 7
Box 1191
164 26 Kista

Tel. +46 (0) 8 634 37 00
e-mail:
info@oki.se för allmänna frågor om
OKI produkter

support@oki.se för teknisk support
gällandes OKI produkter

Vardagar: 08.30 - 12.00,
13.00 - 16.00
Website: www.oki.se

OKI Systems (Schweiz)

Baslerstrasse 15
CH-4310 Rheinfelden

Support deutsch +41 61 827 94 81
Support français +41 61 827 94 82
Support italiano +41 061 827 9473
Tel: +41 61 827 9494
Website: www.oki.ch

**OKI Data Americas Inc.(United
States)**

2000 Bishops Gate Blvd.
Mt. Laurel, NJ 08054
USA

Tel: 1-800-654-3282
Fax: 1-856-222-5247
http://WWW.OKIPRINTINGSOLUTIONS.COM
http://my.okidata.com

**OKI Data Americas Inc.(Canada •
Canada)**

4140 B Sladeview Crescent Units 7&8
Mississauga, Ontario
Canada L5L 6A1

Tél: 1-905-608-5000
Télé: 1-905-608-5040
http://WWW.OKIPRINTINGSOLUTIONS.COM

**OKI Data Americas Inc.(América
Latina (OTRO))**

2000 Bishops Gate Blvd.
Mt. Laurel, NJ 08054
USA

Tel (Español): 1-856-222-7496
1-856-222-5276
Fax: 1-856-222-5260
Email: LASatisfaction@okidata.com

OKI Data de Mexico, S.A. de C.V.

Mariano Escobedo #748, Piso 8
Col. Nueva Anzures
C.P. 11590, México, D.F.

Tel: 52-555-263-8780
Fax: 52-555-250-3501
http://WWW.OKIPRINTINGSOLUTIONS.COM

OKI Data do Brasil, Ltda.

Rua Avenida Alfredo Egidio de souza Aranha
100-4º andar-Bloco C Chacara Santo Antonio
Sao Paulo, Brazil 04726-170

Tel: 55-11-3444-6747 (Grande São
Paulo)
0800-11-5577 (Demais
localidades)
Fax: 5511-3444-3501
e-mail: okiserv@okidata.com.br
http://WWW.OKIPRINTINGSOLUTIONS.COM

OKI Data (Singapore) Pte. Ltd.

438A Alexandra Road #02-11/12,
Lobby 3, Alexandra Technopark
Singapore(119967)

Tel:(65) 6221 3722
Fax:(65) 6594 0609
http://www.okidata.com.sg

OKI Systems (Thailand) Ltd.

1168/81-82 Lumpini Tower,
27th Floor Rama IV Road
Tungmahamek, Sathorn
Bangkok 10120

Tel:(662) 679 9235
Fax:(662) 679 9243/245
http://www.okisysthai.com

OKI Systems (Hong Kong) Ltd.

Suite 1908, 19/F, Tower 3,
China Hong Kong City
33 Canton Road, TsimShaTsui,
Kowloon, Hong Kong

Tel: (852) 3543 9288
Fax: (852) 3549 6040
http://www.okiprintingsolutions.com.hk

OKI Data(Australia) Pty Ltd.

Levw1 67 Epping Road, Macquarie Park
NSW 2113, Australia

Tel: +61 2 8071 0000
(Support Tel: 1800 807 472)
Fax: +61 2 8071 0010
http://www.oki.com.au

Comworth Systems Ltd.

8 Antares Place Mairangi Bay,
Auckland, New Zealand

Tel:(64) 9 477 0500
Fax:(64) 9 477 0549
http://www.comworth.co.nz

**OKI Data(S) P Ltd. Malaysia Rep
Office**

Suite 21.03, 21st Floor Menara IGB,
Mid Valley City,
Lingkaran Syed Pura 59200,
Kuala Lumpur, Malaysia

Tel: (60) 3 2287 1177
Fax: (60) 3 2287 1166

Oki Data Corporation
4-11-22 Shibaura, Minato-ku, Tokyo
108-8551, Japan

www.okiprintingsolutions.com

