

Technology Strategy

OKI has cultivated its strengths over 144 years and possesses advanced technological capabilities that realize uninterrupted and resilient social infrastructure. We define this core competence as “robustness,” which serves as the foundation of all our activities.

Through our overseas sites, we actively collaborate with startups and research institutions to incorporate a wide range of advanced technologies, leading to the creation of new customer value and new businesses. By pursuing such technological collaboration, OKI is driving further value creation.

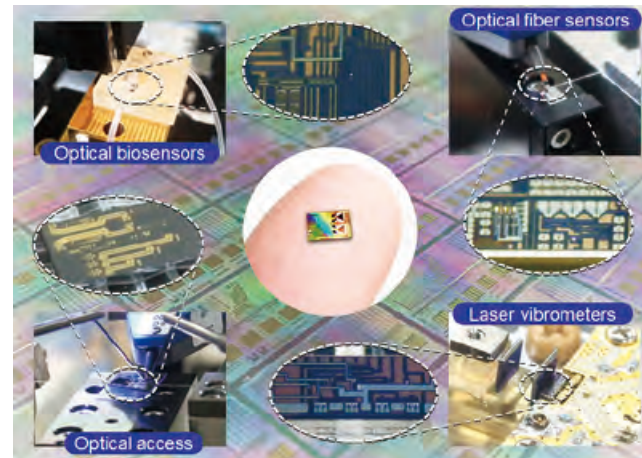
Strengthening Technological Capabilities through Global Open Innovation and Local Co-Creation

OKI is promoting global open innovation along two axes: incorporating cutting-edge startup technologies and strengthening its core technologies.

In Silicon Valley in the United States, we are identifying innovative technologies from startups to fill the gaps in OKI’s own technological capabilities. By integrating with OKI’s products, services, and existing technologies, we are enhancing customer value and creating new business opportunities.

In Berlin, Germany, we are reinforcing photonics technologies and advancing the practical implementation of advanced Edge devices through joint research with leading EU research institutions and collaborations with photonics clusters and optomechatronics-related companies. These efforts are accelerating the strengthening and advancement of OKI’s core technologies.

In the field of photonics, we are developing ultra-compact, low-cost optical functional modules by using semiconductor microfabrication technologies to integrate and miniaturize optical circuits, previously realized by wiring individual optical components with optical fibers, onto silicon substrates. As a result, we are enabling the development of ultra-compact optical sensor chips that can be applied not only to communications but also to diverse fields ranging from infrastructure monitoring to healthcare.



Example of ultra-compact optical integrated circuit chip application

Creating Next-Generation Value through the Use of Generative AI

OKI is proactively introducing AI technologies into its operations to improve internal efficiency and create new value. By analyzing and applying its long-cultivated expertise and extensive operational data through the use of generative AI (OKI AI Chat System), the Company enables faster and more accurate decision-making and addresses complex challenges.

Going forward, OKI will continue to apply generative AI and other advanced technologies to areas such as mobility analysis and operational data from Edge devices, thereby strengthening the Edge platform and meeting the expectations of customers and society through its technological capabilities and creativity.

Advancing the Realization of the Edge Platform

OKI is working to enhance the use of data in social infrastructure by building an Edge platform that centrally manages and integrates data from diverse IoT and Edge devices.

Up to now, we have deployed individually optimized solutions in each field, such as the disaster information system, DPS Core, the next-generation traffic system, LocoMobi 2.0, and infrastructure monitoring services, Monifi. With the Edge platform, we aim to link the data from these services to create new value across a wide range of fields, including disaster preparedness, transportation, and infrastructure monitoring.

By leveraging this platform as a shared foundation, we are promoting frontline DX by providing the remote DX platform technology, REMOWAY, which enables efficient remote monitoring and control of sites by collecting and analyzing diverse sensor data in real time and automatically generating action plans.

In the future, by sharing the functions developed through existing services, we will accelerate data collaboration across different industries, driving innovation in frontline operations and contributing to the resolution of social issues.

Example of Solution and Services Application

