

# Investor Information

## FOUNDED

January 1881

## COMPANY ESTABLISHED

November 1, 1949

## NUMBER OF SHARES OF COMMON STOCK

Authorized: 2,400,000,000

Issued: 612,221,797

## STOCK EXCHANGE LISTINGS

Tokyo, Osaka

## TRANSFER AGENT

The Mizuho Trust & Banking Co., Ltd.

2-1, Yaesu 1-chome, Chuo-ku, Tokyo 103-8670, Japan

## CONTACT FOR FURTHER INFORMATION

Public Relations Division

Oki Electric Industry Co., Ltd.

7-12, Toranomon 1-chome, Minato-ku, Tokyo 105-8460, Japan

Tel: +81 3 3501 3111

Fax: +81 3 3581 5522

E-mail: [ir-info@oki.com](mailto:ir-info@oki.com)

URL: <http://www.oki.com>

## HEAD OFFICE

**Oki Electric Industry Co., Ltd.**

7-12, Toranomon 1-chome,  
Minato-ku, Tokyo 105-8460, Japan

Tel: +81 3 3501 3111

Fax: +81 3 3581 5522

URL: <http://www.oki.com>

## HEAD OFFICE ANNEX

10-3, Shibaura 4-chome,

Minato-ku, Tokyo 108-8551, Japan

Tel: +81 3 3454 2111

Fax: +81 3 5445 6380

## BUSINESS FACILITIES

Numazu Engineering and Manufacturing Division

*Information systems*

Tel: +81 559 25 8111

Honjo Manufacturing Division

*Information and telecommunications systems*

Tel: +81 495 22 5111

Takasaki Engineering Division

*Information systems*

Tel: +81 27 325 1111

System Development Center

*Information systems*

Tel: +81 48 431 7211

Hachioji Engineering and Manufacturing Division

*Electronic devices*

Tel: +81 426 63 1111

Miyazaki Plant

*Electronic devices*

Tel: +81 985 85 5111

Miyagi Plant

*Electronic devices*

Tel: +81 22 345 1211

## RESEARCH AND DEVELOPMENT

Hachioji R&D Center

Tel: +81 426 63 1111

## OVERSEAS OFFICES

Beijing Office

Tel: +86 10 8518 3550/5528

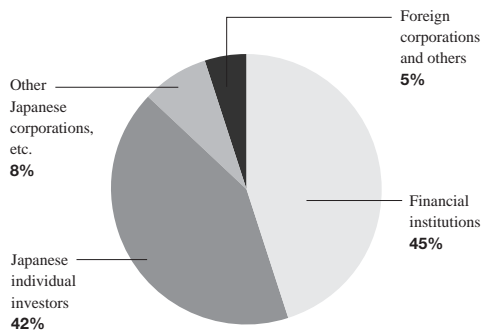
London Office

Tel: +44 208 219 2110

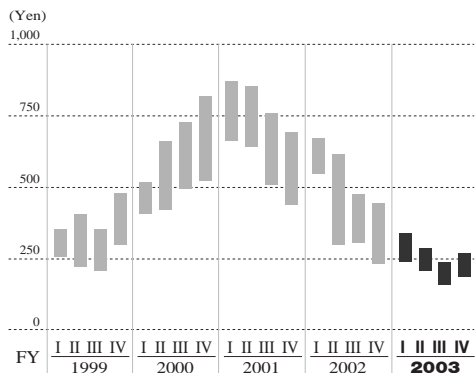
Shanghai Office

Tel: +86 21 6270 1053/1054

**BREAKDOWN OF SHARES HELD  
BY SHAREHOLDER TYPE**  
(As of March 31, 2003)



**COMMON STOCK PRICE RANGE ON  
THE TOKYO STOCK EXCHANGE**



This annual report is printed on recycled paper.