



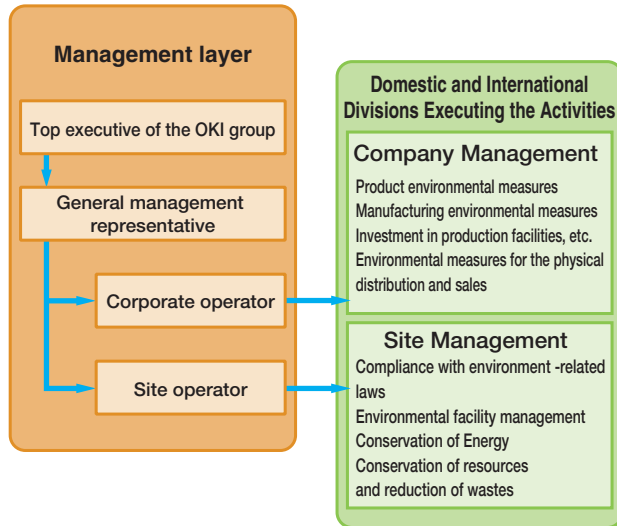
Environmental Management

Company-wide Network-type Environmental Management

The OKI group, by vertically and horizontally combining the activities of our sites and in-house companies, has been promoting “Company-wide network-type environmental management” to achieve an efficient management in the entire group. On each theme of our environmental activities, this “Company-wide network-type environmental

management” provides the selection and concentration of resources to resolve issues and technologies and information sharing to create eco-friendly products and practice the business with low impact on the environment, and finally we are aiming to take efficient environmental measures and maximize the effect.

Management by Sites and Companies



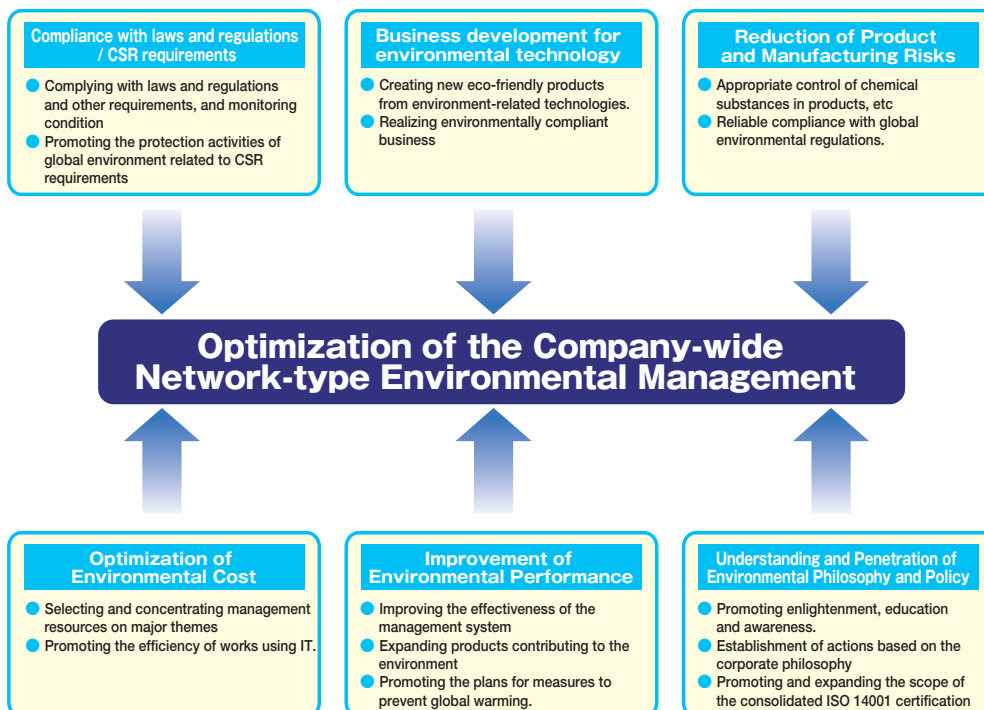
Outline of Company-wide Network-type Environmental Management

Theme	Reducing the environmental impact of products				Reducing the environmental impact from business		
	Lower power consumption	Reduction of chemical substances	Lead-free	Green procurement	Energy conservation	Waste reduction	Environmental communication
Head office	↓	↓	↓	↓	↓	↓	↓
Electronic devices	↑	↑	↑	↑	↑	↑	↑
Information processing equipment	↑	↑	↑	↑	↑	↑	↑
Telecommunications equipment					↑	↑	
Printers					↑	↑	
Production services					↑	↑	
Sites and branches					↑	↑	↑

↑ : Individual theme ↑ : Central theme ↑ : Theme covering multiple in-house companies

Optimization of Environmental Management

Aiming to optimize our “Company-wide network-type environmental management” that is an approach exclusive to the OKI group, we have six aspects to promote the improvement of our management system and operation.



CSR: Corporate Social Responsibility