



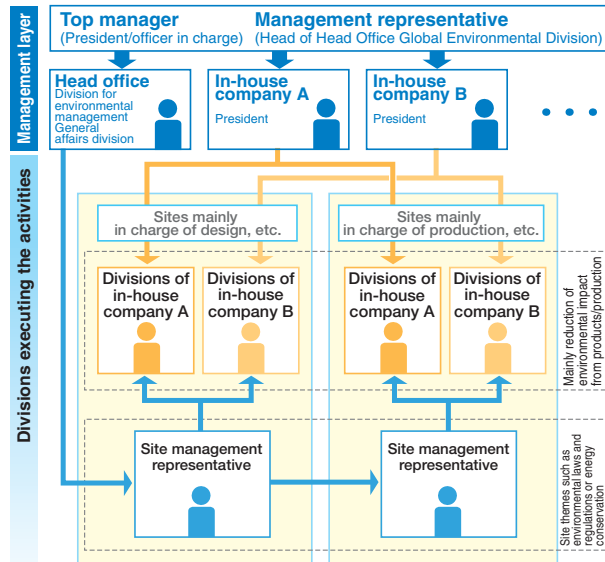
# Environmental Management

## Company-wide Network-Type Environmentally-Conscious Management

The OKI Group is promoting “company-wide network-type environmentally-conscious management”, which means that the activities of our sites and in-house companies are vertically and horizontally combined to achieve an efficient management on a group-wide basis. For each theme of our environmental activities,

we select and concentrate resources to resolve issues, share technologies and information, create eco-friendly products and practice business with low impact on the environment, aiming for efficient environmental measures and a maximization of their effect.

### ● Management by Sites and Companies



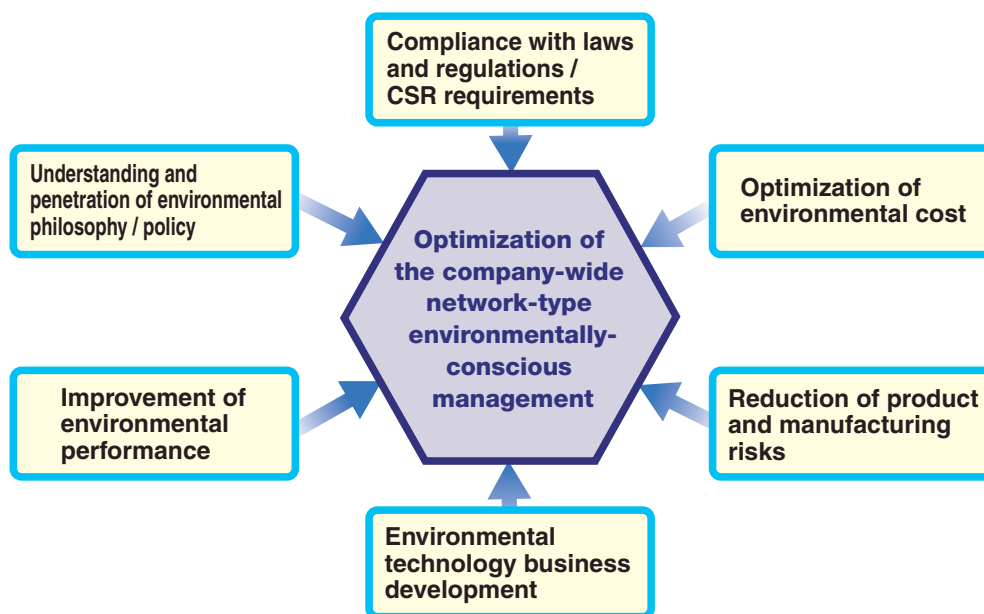
### ● Outline of Network-type Environmentally-conscious Management

Theme	Reducing the environmental impact of products				Reducing the environmental impact from business		
	Low power consumption	Reduction of chemical substances	Lead-free	Green procurement	Energy conservation	Waste reduction	Environmental communication
Division							
Head office	↓	↓	↓	↓	↓	↓	↓
In-house company	Electronic devices	↑	↑	↑	↑	↑	↑
	Information processing equipment	↑	↑	↑	↑	↑	↑
	Telecommunications equipment	↑	↑	↑	↑	↑	↑
	Printers	↑	↑	↑	↑	↑	↑
	Production services	↑	↑	↑	↑	↑	↑
Sites and regional offices					↑	↑	↑

↑ : Individual theme    ↑ : Central theme    ↑ : Theme covering multiple in-house companies

## Optimization of Environmentally-conscious Management

Aiming to optimize our “company-wide network-type environmentally-conscious management” - an approach that is unique to the OKI group - we are promoting operational improvements of our management system from six approaches.



CSR: Corporate Social Responsibility