

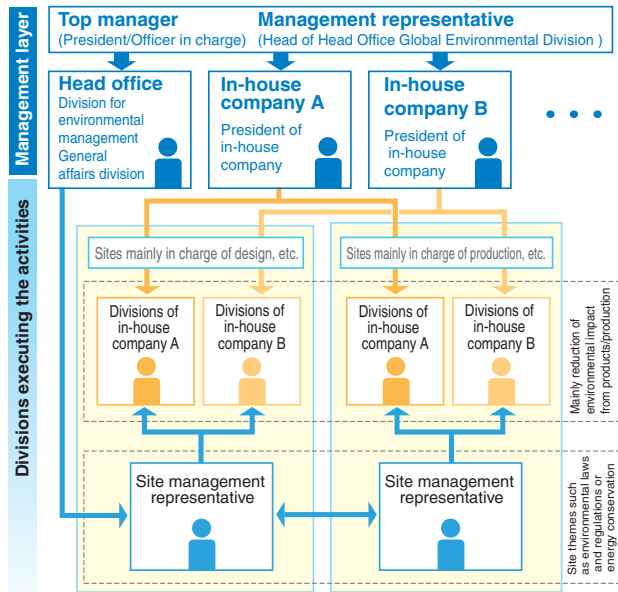


# Environmental Management

## Company-wide Network-Type Environmentally-Conscious Management

The Oki Group is promoting “company-wide network-type environmentally-conscious management”, which means that the activities of our sites and in-house companies are vertically and horizontally combined to achieve an efficient management on a group-wide basis. Through this management, we select and concentrate resources and share information and know-how to solve problems for each theme of environmental activities in an effort to realize eco-friendly products and environmentally compliant business with a low environmental impact. We strive to achieve efficient environmental measures and to maximize the effect.

### Management by Sites and Companies



### Outline of Network-type Environmentally-conscious Management

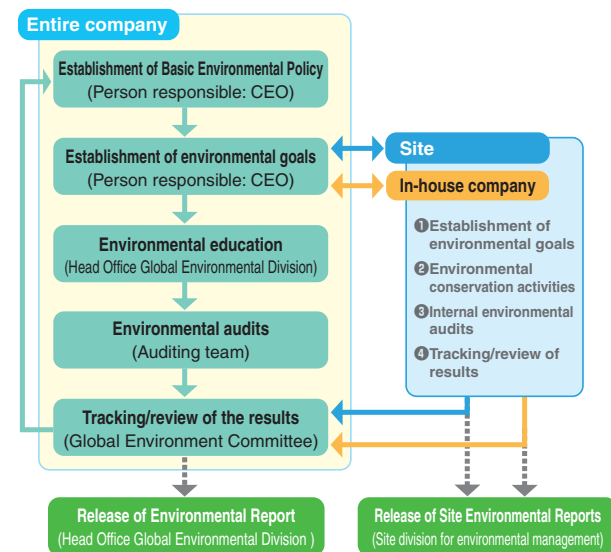
Theme	Reducing the Environmental Impact of Products				Reducing the Environmental Impact from Business		
	Low Power Consumption	Reduction of Chemical Substances	Lead-free	Green Procurement	Energy Conservation	Waste Reduction	Environmental Communication
Head Office	↓	↓	↓	↓	↓	↓	↓
Electronic Devices	↑	↑			↑	↑	↑
			↑	↑	↑	↑	↑
Information processing equipment	↑	↑	↑	↑	↑	↑	↑
Telecommunications Equipment							
Printers Oki Data Corporation					↑	↑	
Production Services					↑	↑	
Site/Regional Office					↑	↑	↑

↑: Individual theme    ↑: Central theme    ↑: Theme covering multiple in-house companies

## Environmental Management System

We have built an environmental management system that conforms to the ISO14001:2004 standard and covers the entire Oki group.

### Outline of Corporate Environmental Management System



### Corporate Promotion Organization

