



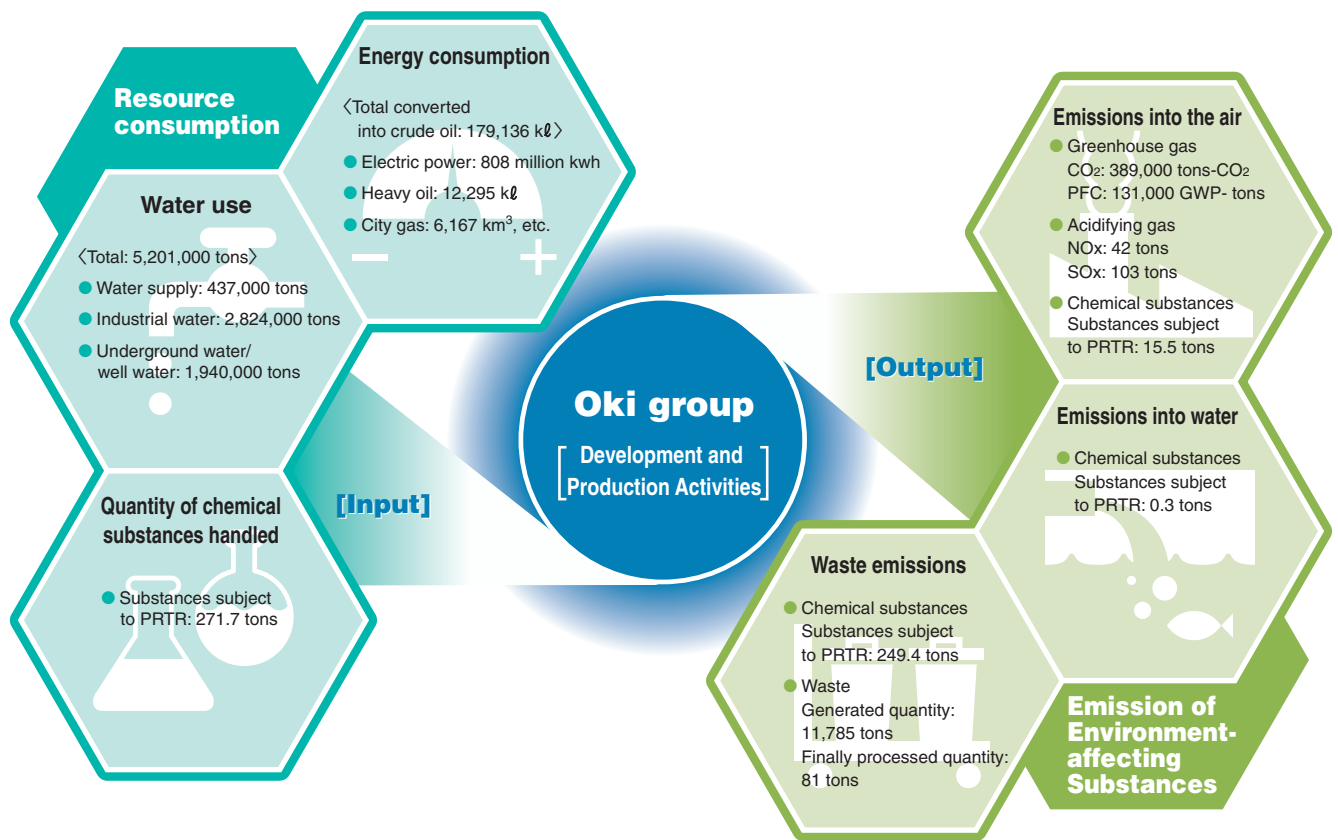
# Environmental Conservation Activities

## Reducing the Environmental Impact of Business Activities

In the course of our daily business activities, we consume resources and emit substances from production plants and offices. The Oki group is actively engaging in efforts to reduce the impact that this has on the environment. Through our zero emissions efforts, in which we work to bring waste processed in landfills to zero, we strive to cut the input of resources and the emissions of waste, as this leads to increased environmental impact. In addition, we keep CO<sub>2</sub> emissions from the consumption of energy, the quantities of chemical substances we use and other factors to the minimum, striving to ease environmental impact on a companywide basis and promoting “Green Factories” to realize a recycling-based society.

## Environmental Impact of Development and Production Activities

As “input,” we consume resources such as energy, chemical substances, and water to conduct the business activities “development” and “production.” Then, as “output,” we emit environment-affecting substances into the air, water and waste.



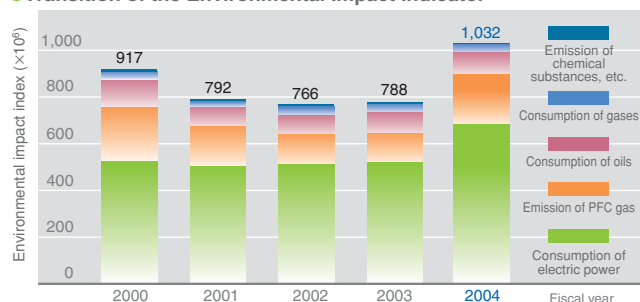
## Assessing the Impact on the Environment from Development and Production Activities

For a total assessment of multiple environmental impacts, we need to treat the degree at which each impact affects the environment on the basis of the same standards. Because of this, we utilize integration methods<sup>\*1)</sup> to assess the total affect from CO<sub>2</sub> or waste emissions that the Oki group has on the environment using one index (Environmental Impact Indicator). Using one standard also enables us to judge where we should put the focus in our

environmental measures. The graphs show the results of the integrated assessment of the environmental impact from the Oki group's business activities. The affect on the environment from the consumption of electric power continued to represent 66% of the total, so that we will go on to focus our measures on this issue.

\*1) Method for the integration of environmental impacts: from the “LCA Public Test Database (as of February 2004),” Japan Environmental Management Association for Industry (2003).

### ● Transition of the Environmental Impact Indicator



### ● Environmental Impact from Business Activities in Fiscal 2004

